



# Stockport JSNA

joint strategic needs assessment



## 2015-19 JSNA

Demographics and Population

April 2016

# CONTENTS

3	<a href="#"><u>Population size</u></a>
5	<a href="#"><u>Population structure</u></a>
6	<a href="#"><u>Trends in population</u></a>
11	<a href="#"><u>Population of wards</u></a>
13	<a href="#"><u>Population and trends by deprivation</u></a>
19	<a href="#"><u>Planned Developments</u></a>
21	<a href="#"><u>Family Composition</u></a>
24	<a href="#"><u>Ethnicity</u></a>
27	<a href="#"><u>Other trends</u></a>
28	<a href="#"><u>Summary of key trends and impact on health</u></a>

The resident population of Stockport is **288,733**  
(2015)

There are:

- 55,183 (19.1%) young people aged 0-15
- 27,342 (9.5%) young adults aged 16-24
- 149,734 (51.9%) adults aged 25-64
- 56,474 (19.6%) older people aged 65+, of whom
  - 26,516 (9.2%) are aged 75+
  - 7,578 (2.6%) are aged 85+
  - 2,673 (0.9%) are aged 90+



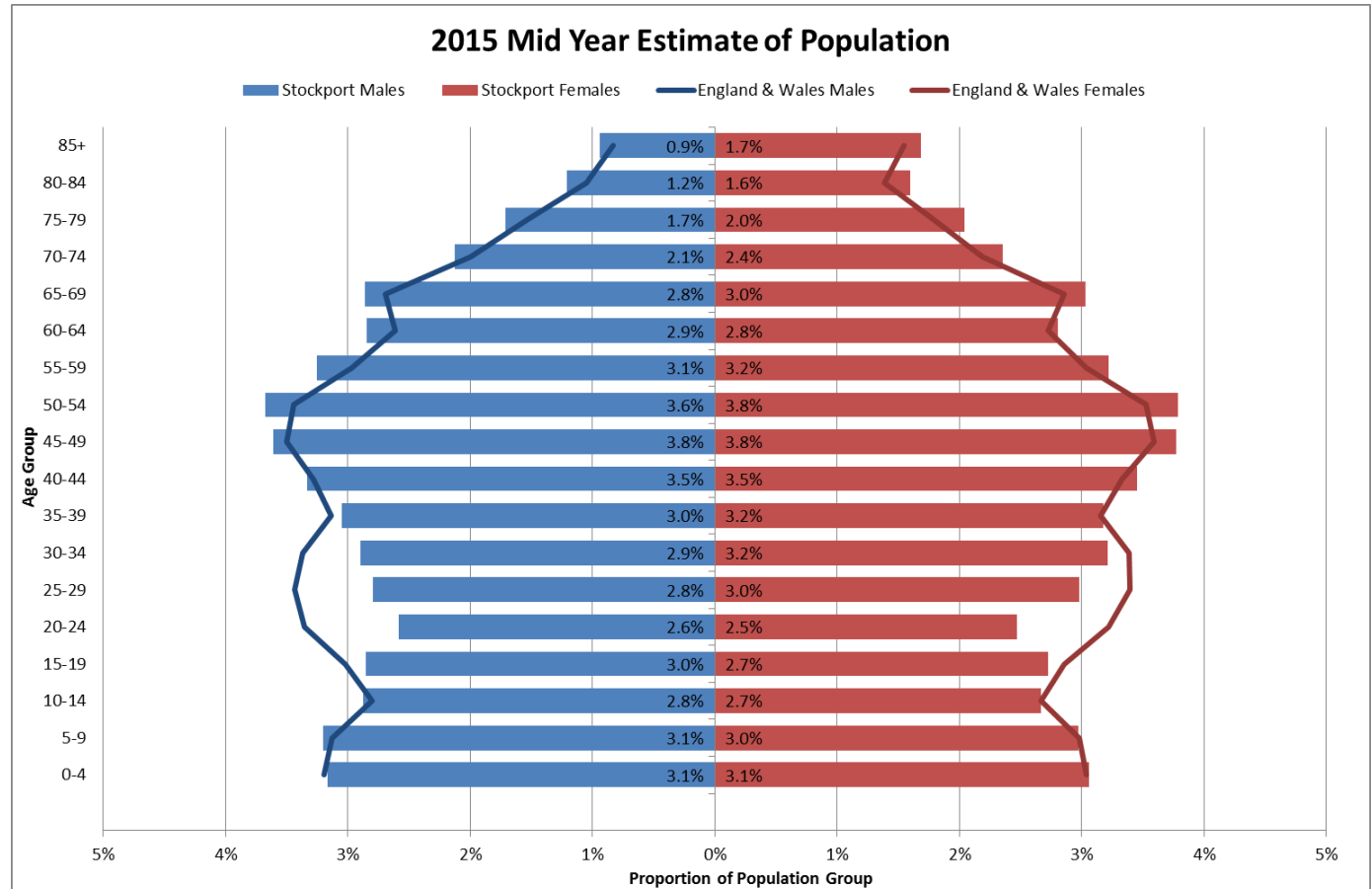
The JSNA focuses on people who live in Stockport, but different organisations in Stockport have different catchment areas

- There are 308,700 people registered at Stockport GP practices
  - 293,200 of these people live in Stockport
  - 15,500 of these people live outside Stockport (5.0%)
    - 10,900 people who live in Stockport use GP services in other areas (3.6%)
    - Note that these populations are larger than the official estimates due to list inflation
- Stockport NHS Foundation Trust serves the population of Stockport and the High Peak
  - Approximately 66% of hospital admissions for Stockport residents are at Stockport NHS Foundation Trust
  - Around 13% are at University Hospital South Manchester NHS Foundation Trust
  - Around 10% are at Central Manchester NHS Foundation Trust

Data will focus on residents, but these differences are important

The population of Stockport has more older people and fewer younger adults than the national average.

Particularly driven by young adults (18-29) leaving Stockport, either for further or higher education or to find work or affordable housing.



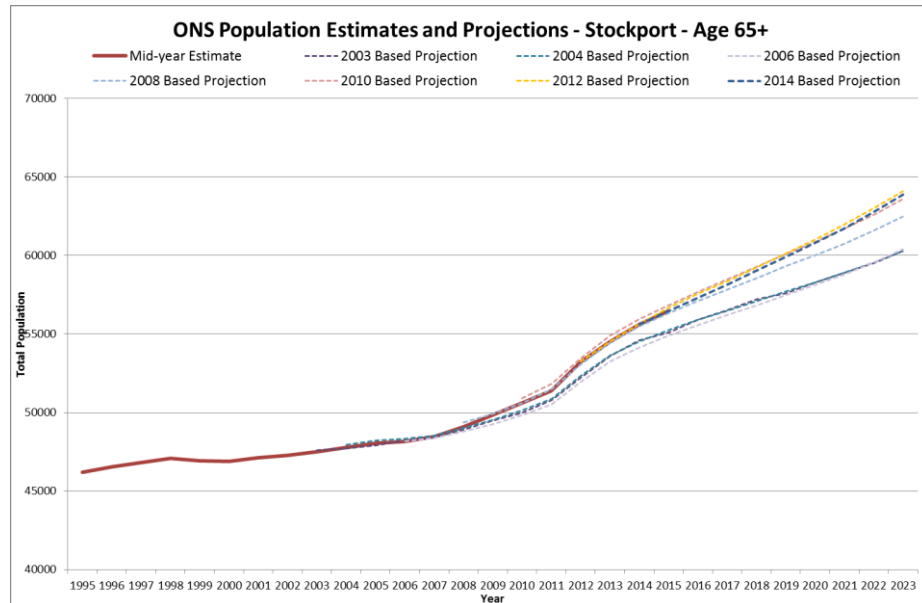
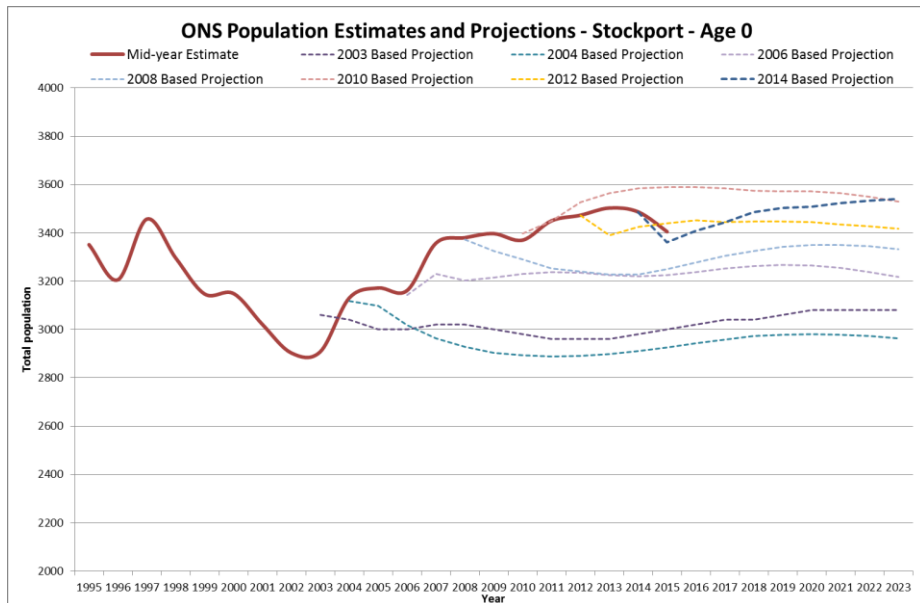
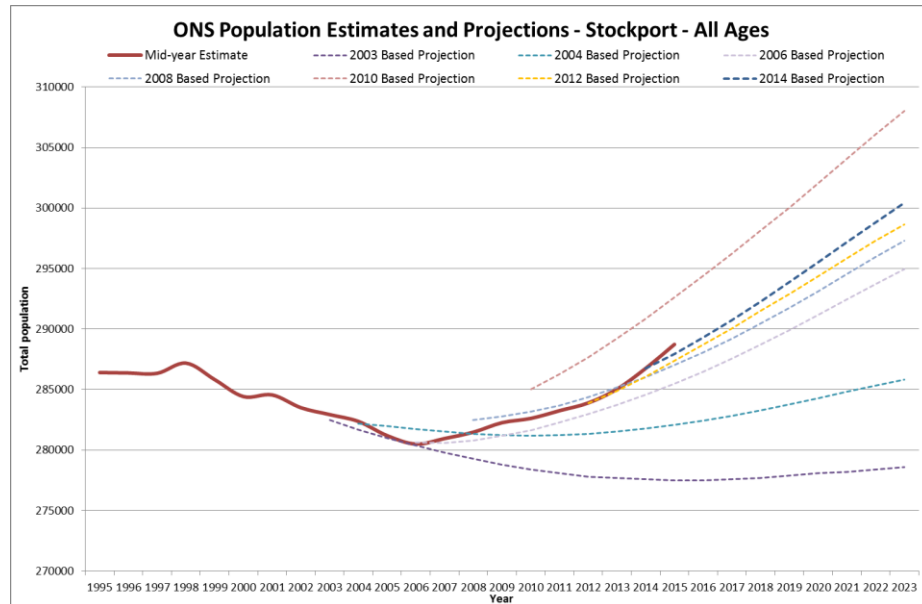
Stockport's total population has been relatively stable over last two decades, fluctuating between 280,500 and 287,000. It is now predicted to rise over the next ten years.

Due to the:

- **unpredicted rise in birth rates** that occurred from 2002 onwards.
- In 2001 births reached a low of 2,900 births, levels then rose by 22% to 3,500 each year by 2010, back to the levels seen in the mid 90s.
- Driven by a number of factors including:
  - during the later 90s some mothers delaying birth of first child
  - impact of third generation following 60s baby boom
- Birth levels are expected to stop increasing but remain at the higher level for the next ten years.
- **predicted rise in the older population** that has been a trend for the last two decades.
- This increase has occurred as expected, so that the 65+ population has grown by 16% since 2002.
- Driven by a number of factors including:
  - Increasing life expectancy
  - Fewer people are dying young
  - The average age of death for older people is increasing
  - Post war baby boom cohort effect
- The increase in older population is anticipated to continue.

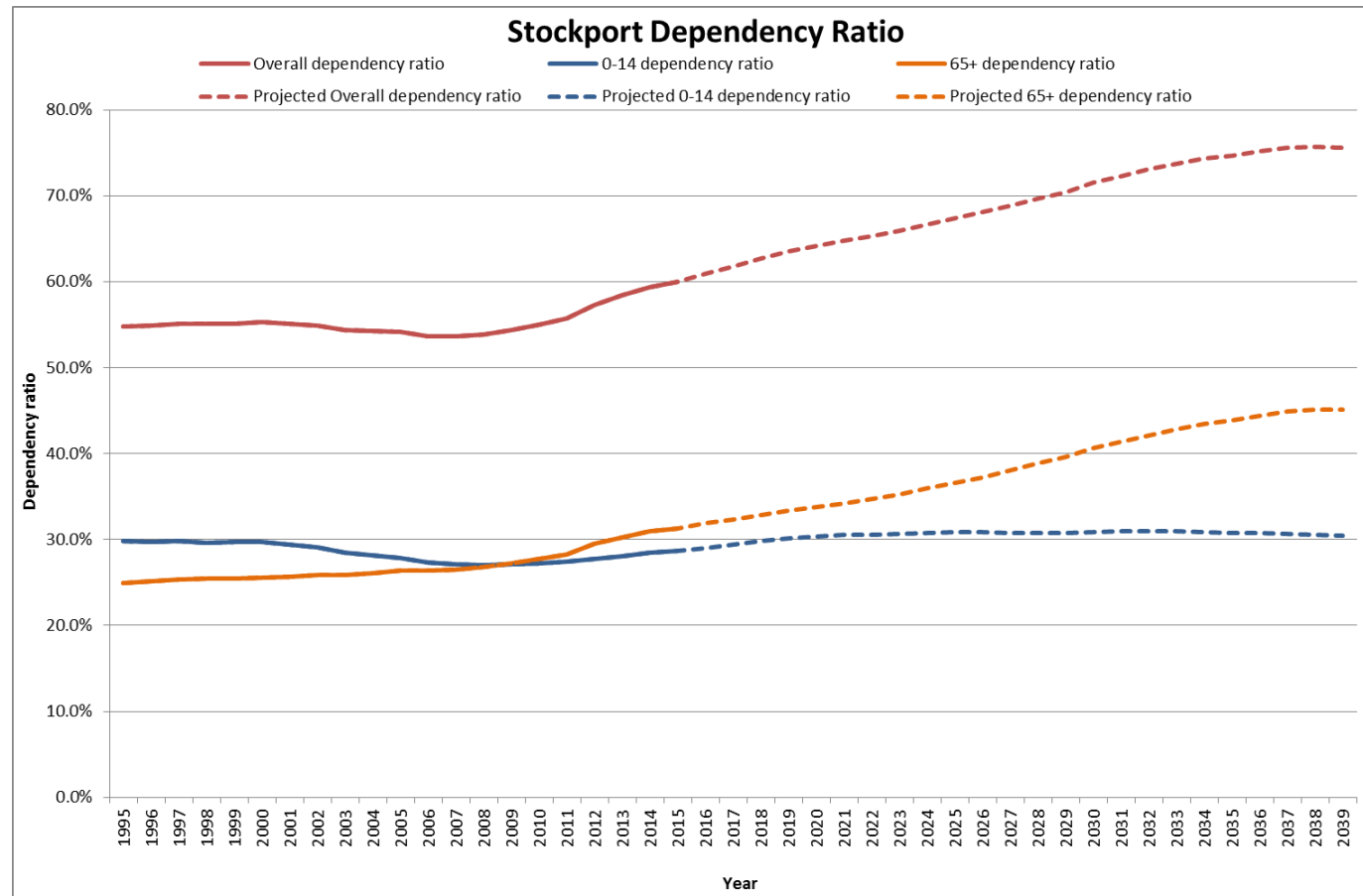


STOCKPORT healthwatch Stockport Clinical Commissioning Group



Stockport's dependency ratio is increasing and is expected to continue to increase, mainly due to the increase in the older population.

The dependency ratio is the total population aged 0-14 and 65+ divided by the total population aged 15-64, which roughly shows the ratio of dependent to producing people in the population. As the ratio increases, there may be an increased burden on services and expenditure.

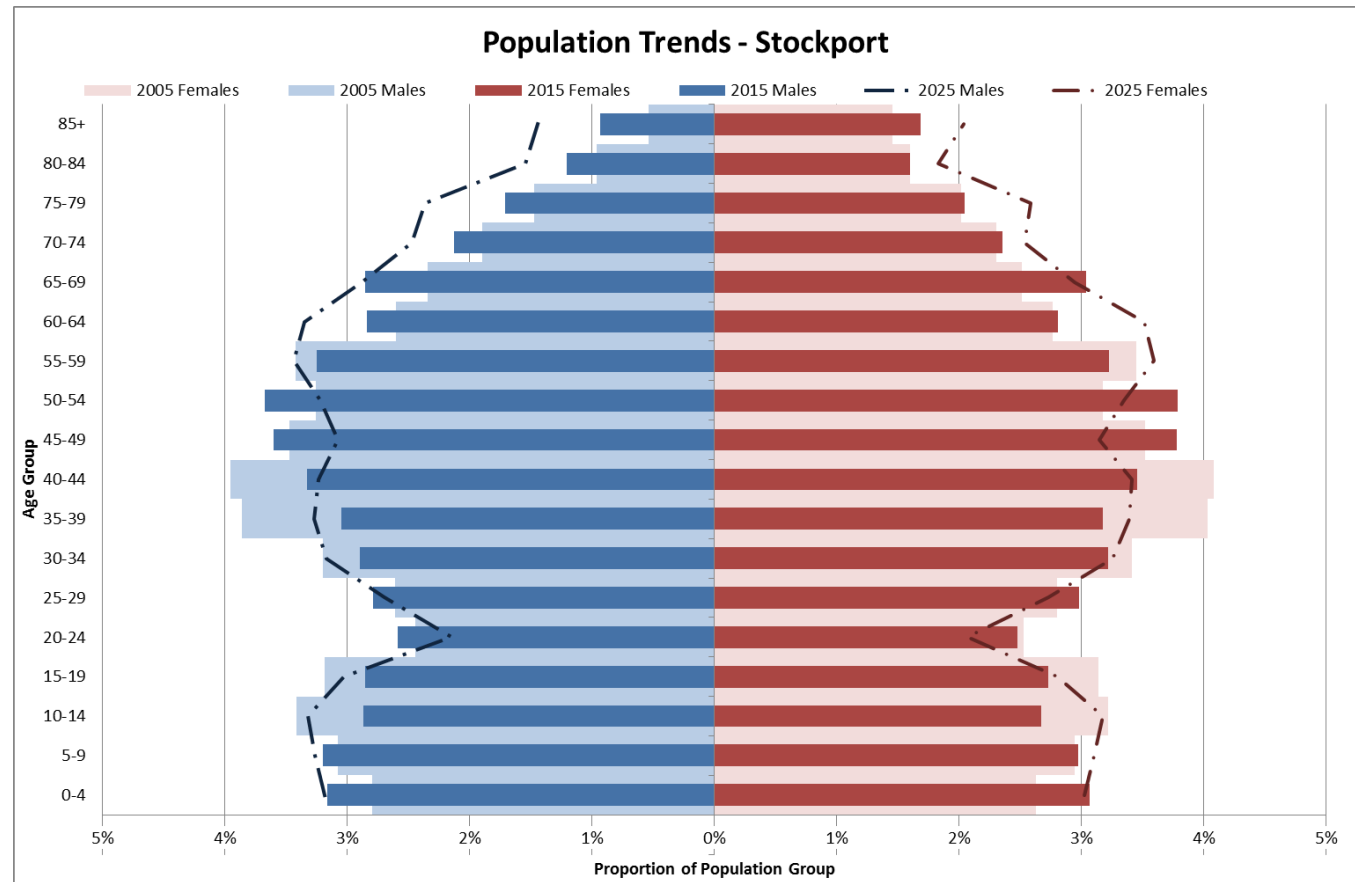


The increasing older population may also contribute more, in providing care, volunteering and spending power. There is also a trend of increasing paid employment in the older age group.

The older population (aged 55+) and younger population (<15) are expected to grow.

The pattern of young adults leaving Stockport is expected to continue, and as the low birth cohorts of the early 2000s reach this age in 2023; this population is expected to particularly contract.

The large cohort of those born in the 1960s baby boom will reach their 60s in the next decade, as those born in the post war boom reach their mid 70s.



The relative impact of the ageing population on health and care services depends on trends in healthy life expectancy, in other words whether people are living longer in good health or living longer in poor health.



By 2025 the population of Stockport is projected to be **303,430**, up 14,697 (4.8%)

There will be:

- 59,572 (19.6%) young people aged 0-15, up 4,389 (7.4%)
- 25,715 (8.5%) young adults aged 16-24, down 1,627 (-6.3%)
- 151,834 (50.0%) adults aged 25-64, up 2,100 (1.4%)
- 66,310 (21.9%) older people aged 65+, up 9,836 (14.8%)

of whom:

- 34,591 (11.4%) are aged 75+, up 8,075 (23.3%)
- 10,215 (3.4%) are aged 85+, up 2,637 (25.8%)
- 3,864 (1.3%) are aged 90+, up 1,191 (30.8%)

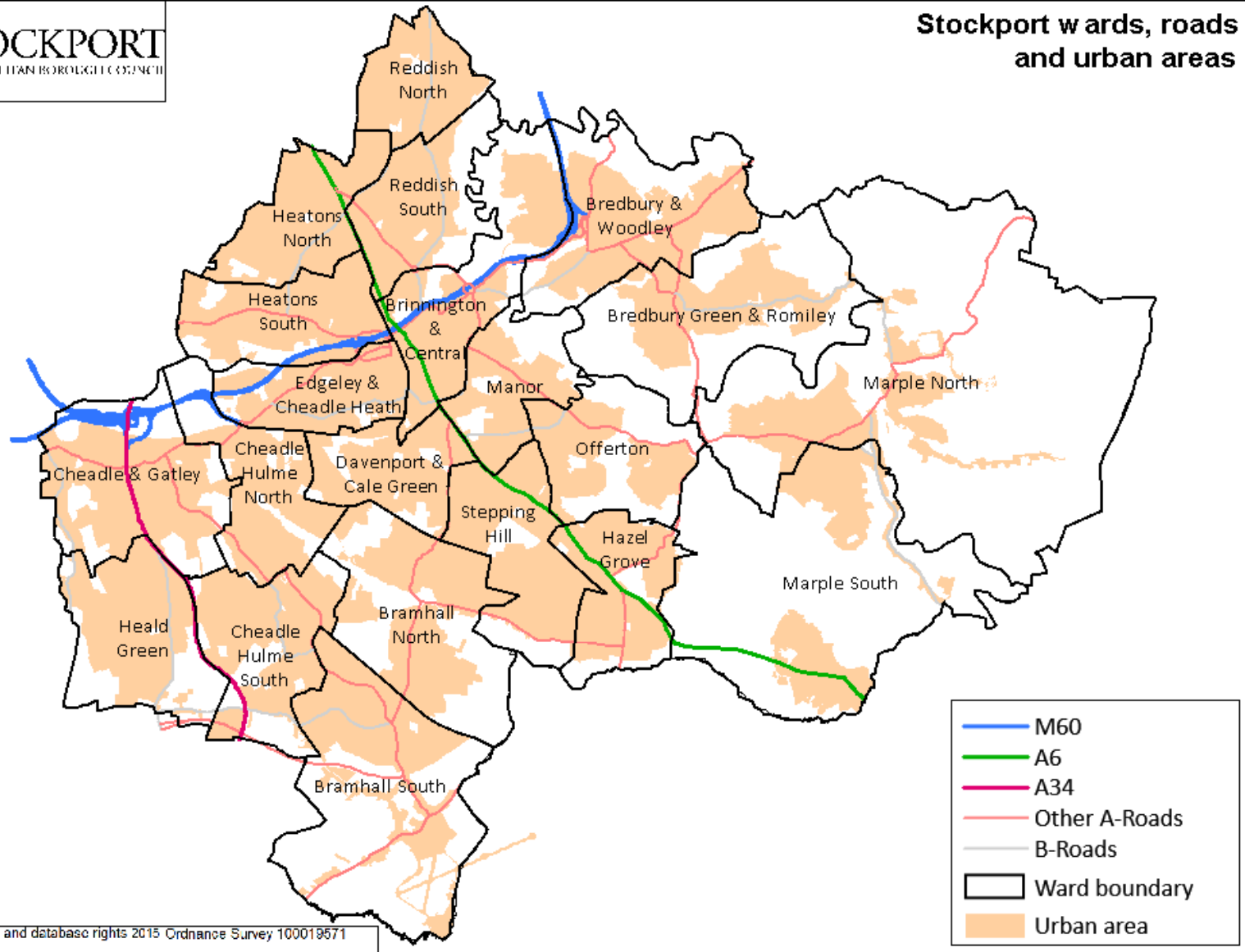
These demographic patterns are not the same across Stockport, different areas have different trends.

The key geographies used in the JSNA are:

- Electoral wards
- CCG / Adult Social Care localities
- Deprivation quintiles
- Priority areas
- Lower Super Output Areas



## Stockport wards, roads and urban areas



© Crown copyright and database rights 2015 Ordnance Survey 100019571

Wards are all reasonably similar in total population.

The age structure varies however, with more deprived wards of Brinnington & Central, Davenport & Cale Green, Edgeley & Cheadle Heath and Reddish North having younger populations. More affluent areas tend to have older populations.

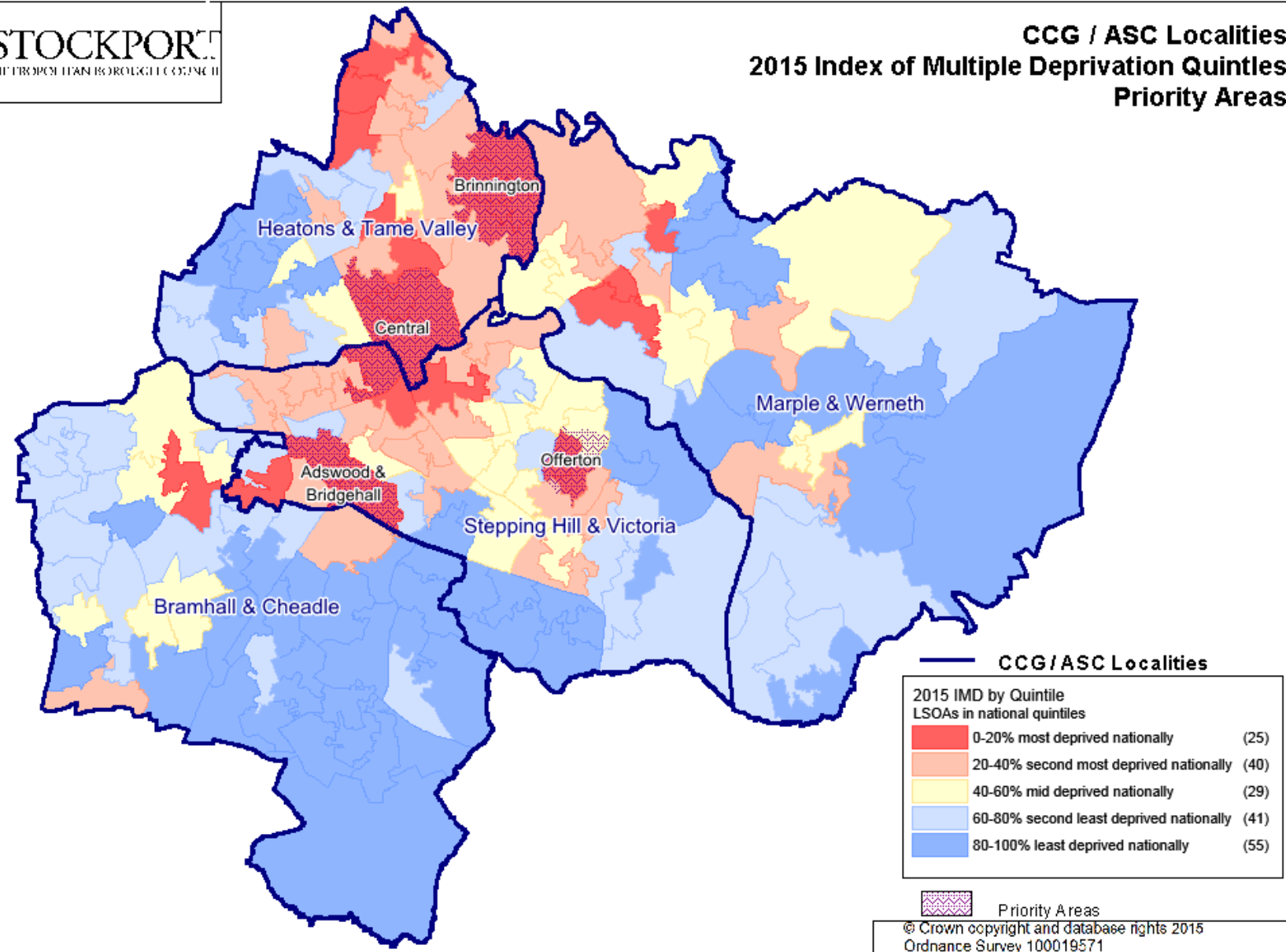
Stockport's nursing and residential care home population is relatively small, around 2,300 people – however the distribution is not even. The absence of any care homes explains why Cheadle Hulme South, while relatively affluent, has fewer people age 85+.

Wards with higher number of care home beds include Davenport & Cale Green, Brinnington & Central, Marple North, Heatons North and Bredbury Green & Romiley, each with more than 200.

Ward Name	Population (2015)	% aged 0-15	% aged 65+	% aged 85+
Bramhall North	13,102	17.8%	23.0%	3.2%
Bramhall South & Woodford	11,951	17.6%	27.5%	4.4%
Bredbury & Woodley	13,656	17.7%	21.1%	2.3%
Bredbury Green & Romiley	14,171	18.2%	24.1%	3.5%
Brinnington & Central	15,843	21.9%	12.8%	1.9%
Cheadle & Gatley	14,991	19.1%	21.7%	3.6%
Cheadle Hulme North	13,286	19.1%	19.8%	2.4%
Cheadle Hulme South	13,909	19.7%	20.2%	2.2%
Davenport & Cale Green	15,480	23.3%	13.1%	2.0%
Edgeley & Cheadle Heath	14,619	20.4%	12.3%	1.6%
Hazel Grove	14,259	18.5%	22.4%	3.3%
Heald Green	12,762	18.7%	22.1%	2.9%
Heatons North	13,842	18.4%	18.1%	3.3%
Heatons South	14,328	19.0%	16.4%	1.9%
Manor	13,685	19.7%	15.0%	1.7%
Marple North	12,621	17.4%	26.4%	3.1%
Marple South	11,422	15.2%	29.5%	3.8%
Offerton	13,961	19.0%	19.4%	2.2%
Reddish North	14,519	21.3%	14.4%	1.6%
Reddish South	13,648	18.0%	16.4%	1.9%
Stepping Hill	12,678	17.6%	21.2%	2.9%
<b>Stockport total</b>	<b>288,733</b>	<b>19.1%</b>	<b>19.6%</b>	<b>2.6%</b>
	<b>KEY</b>	<b>Significantly lower than Stockport</b>	<b>Significantly higher than Stockport</b>	



## CCG / ASC Localities 2015 Index of Multiple Deprivation Quintiles Priority Areas



CCG localities vary in size, Stepping Hill & Victoria is larger and Marple & Werneth smaller.

Fewer people in Stockport live in the most deprived quintile (around 14% of the population), and more live in the least deprived areas. In total around 35% of the population live in areas of higher than average deprivation.

Age structures show that older populations are more common in the more affluent areas, and younger populations more common in deprived areas.

Priority areas have been identified as those most in need, and cover around 7.9% of Stockport's population. Most priority areas have a younger population profile, however the population of Central is more middle aged.

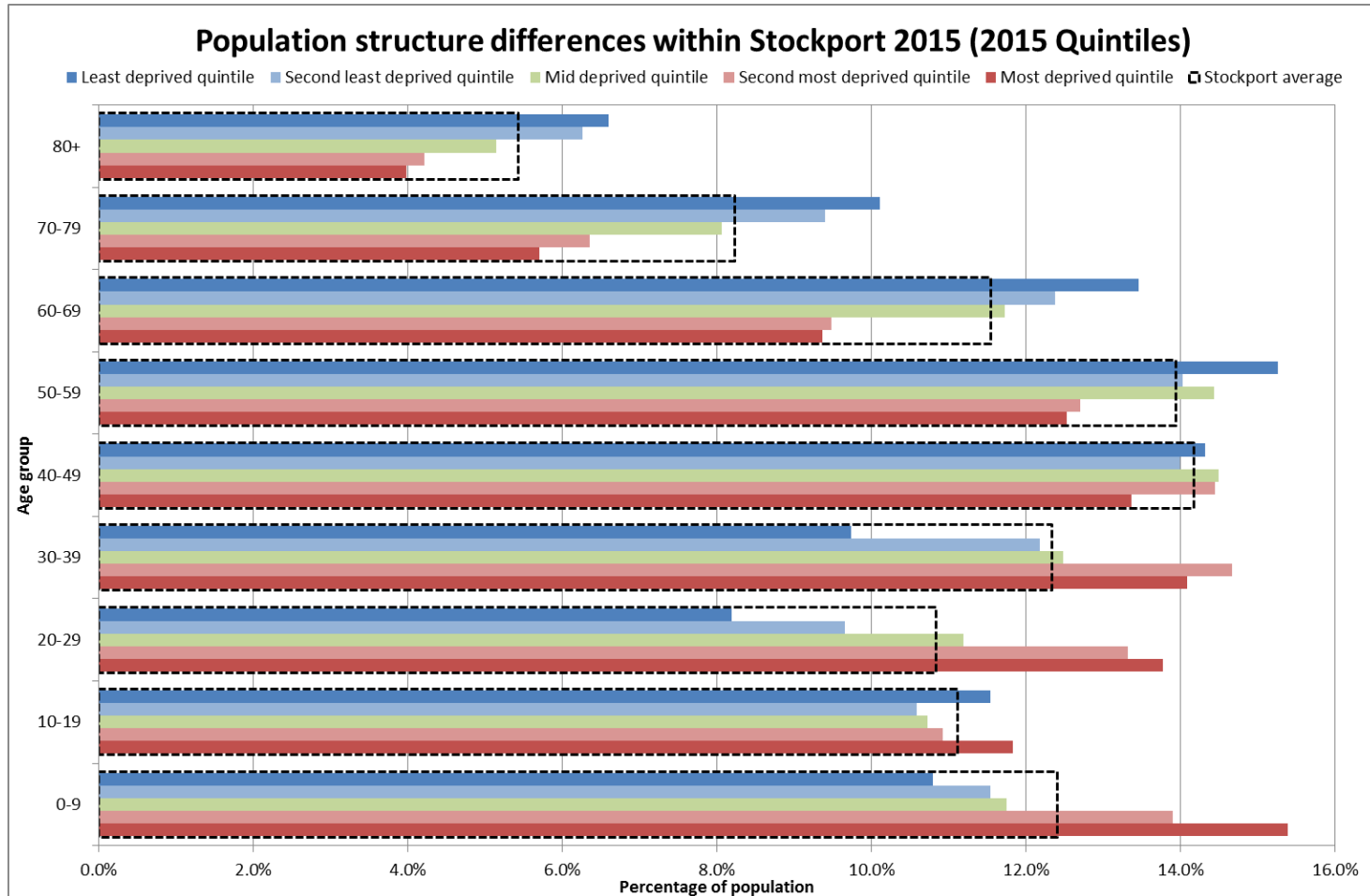
Geography	Population (2015)	% aged 0-15	% aged 65+	% aged 85+
<b>CCG / ASC localities</b>				
Bramhall & Cheadle	75,683 (26.2%)	18.6%	22.6%	3.2%
Heatons & Tame Valley	69,280 (24.0%)	20.1%	15.6%	2.2%
Marple & Werneth	51,619 (17.9%)	17.2%	25.1%	3.2%
Stepping Hill & Victoria	92,151 (31.9%)	19.8%	17.0%	2.2%
<b>Deprivation quintiles</b>				
Most deprived quintile	40,733 (14.1%)	22.6%	14.3%	2.1%
Second most deprived quintile	60,986 (21.1%)	20.5%	15.3%	2.1%
Mid deprived quintile	43,679 (15.1%)	18.1%	19.2%	2.4%
Second least deprived quintile	62,798 (21.7%)	17.9%	22.1%	3.0%
Least deprived quintile	80,537 (27.9%)	17.8%	23.6%	3.1%
<b>Priority Areas</b>				
Adswood & Bridgehall	5,365 (1.9%)	29.0%	10.5%	1.3%
Brinnington	7,107 (2.5%)	26.1%	11.8%	2.2%
Central	6,932 (2.4%)	16.5%	14.4%	2.0%
Offerton (excl. pockets)	3,332 (1.2%)	26.0%	17.5%	2.2%
<b>All priority areas</b>	<b>22,736 (7.9%)</b>	<b>23.8%</b>	<b>13.1%</b>	<b>1.9%</b>
<b>Stockport total</b>	<b>288,733</b>	<b>19.1%</b>	<b>19.6%</b>	<b>2.6%</b>
	<b>KEY</b>	<b>Significantly lower than Stockport</b>	<b>Significantly higher than Stockport</b>	

The population of the more deprived areas is much younger than that of the least deprived areas.

The loss of population in the early 20s affects the less deprived areas most, this trend doesn't appear in more deprived areas.

Deprived areas have more people aged under 40 than the Stockport average.

Less deprived areas have more people aged 50+.

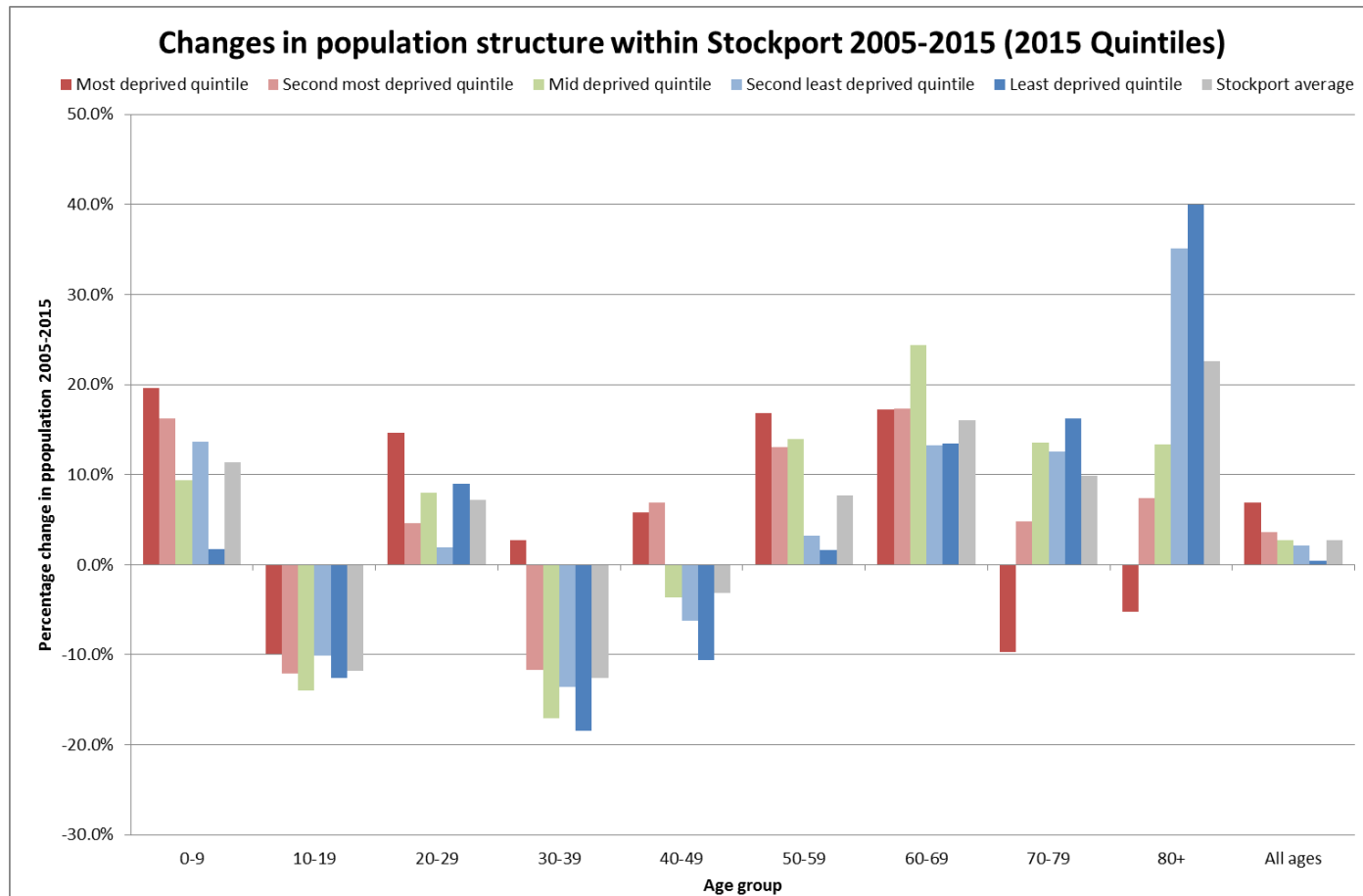


Different areas within Stockport have seen different trends in population over the last decade.

In the more deprived areas the older population has fallen, both in total numbers and as a percentage. Trends in these areas often happen later than in other areas, and it is only since 2011 that an increase in the older population has begun to emerge here.

Instead these areas have seen an increase in the population in their 20s and 40s.

The least deprived areas have seen a fall in the population aged under 50, and a particular rise in the over 80s population. This is the only area to experience an actual fall in population.



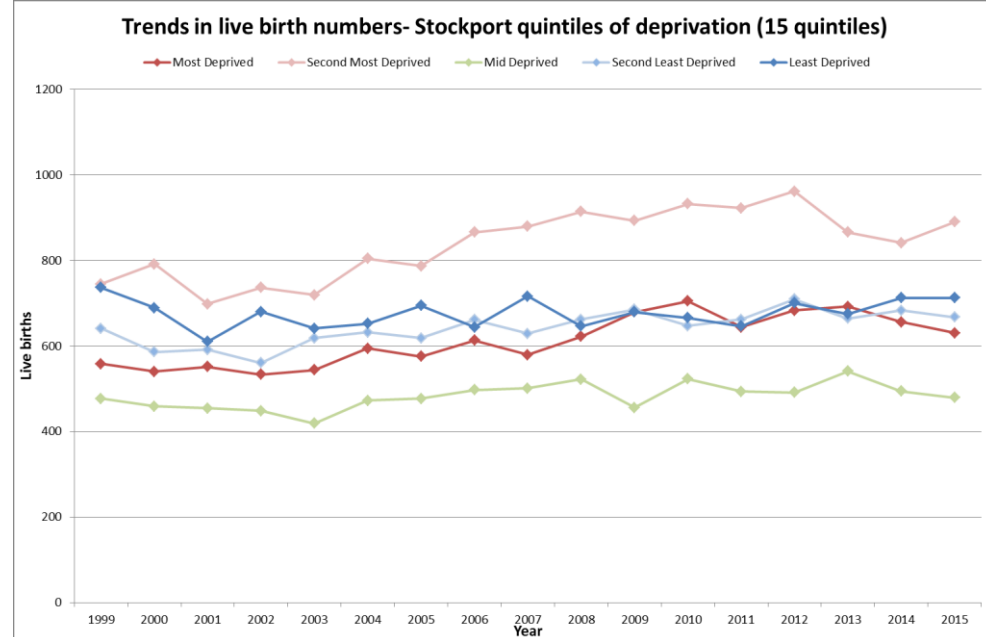
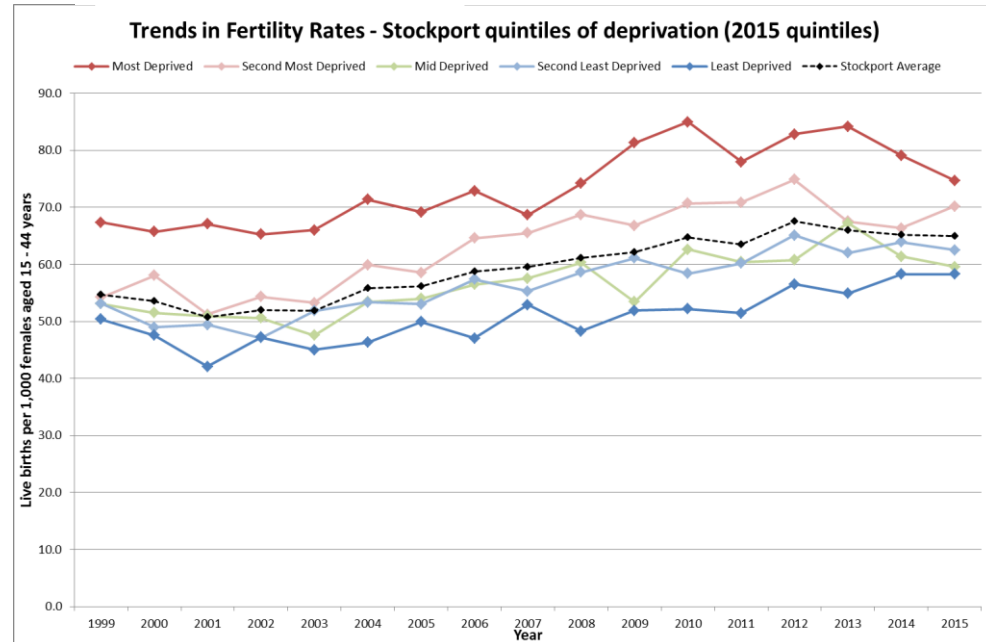


Birth rates have risen since 2000 in all areas.

However, due to the fall in the number of females aged 15-44 in the less deprived areas, the number of births in these areas have remained stable.

Numbers of births in the more deprived areas have risen, and despite the overall population share (35%), the two more deprived areas account for 45% of all births. 15 years ago this figure was 43%. More babies are therefore being born in areas of higher risk.

Birth rates and numbers are predicted to remain stable, at the higher level over the next 10 years.



The described trends have worked together to mean that by 2014 more people live in areas of deprivation within Stockport than did 10 years ago:

Deprivation quintiles	Population (2015)	Population (2004)	Change
Most deprived quintile	40,733 (14.1%)	38,111 (13.6%)	+2,622
Second most deprived quintile	60,986 (21.1%)	58,879 (20.9%)	+2,107
Mid deprived quintile	43,679 (15.1%)	42,539 (15.1%)	+1,140
Second least deprived quintile	62,798 (21.7%)	61,475 (21.9%)	+1,323
Least deprived quintile	80,537 (27.9%)	80,191 (28.5%)	-346

The populations of the following wards have grown by more than 5% over the last 10 years:

- Brinnington & Central
- Davenport & Cale Green
- Edgeley & Cheadle Heath
- Cheadle Hulme South
- Hazel Grove
- Cheadle & Gatley

In part these changes are driven by the demographic trends but also by changes in housing; these areas have seen large scale housing development over the last 10 years.

The populations of the following wards have fallen by more than 1% over the last 10 years:

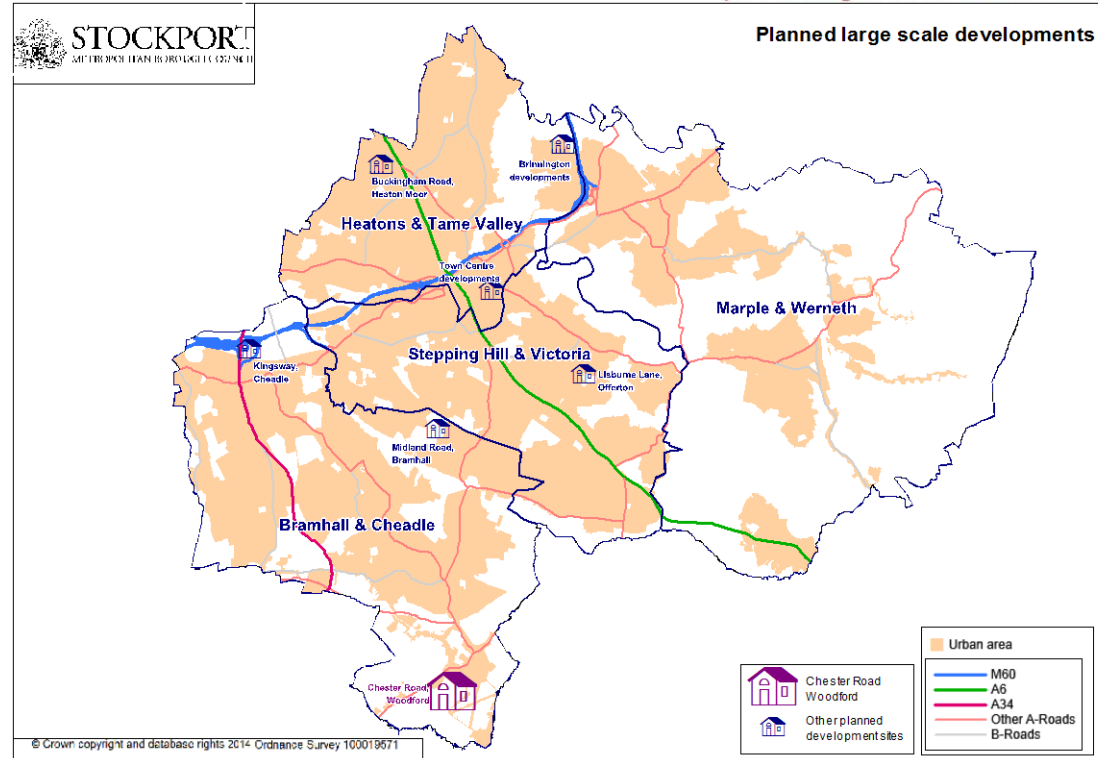
- Bramhall South & Woodford
- Marple South

Official population projections are based on current trends in births, deaths and migration and do not take into account any significant changes in the availability of housing or employment in the area.

To stay on course with its housing target, Stockport will need to deliver over 3,200 homes by 2031; in context between 2011 and 2016 1,658 net new dwellings were created in Stockport.

Although as things stand the majority of this target is likely to be met by a range of small scale developments spread throughout Stockport, there are also currently a number of larger scale proposals for the development of new housing; alongside plans for the regeneration of Stockport's town centre economy and transport infrastructure.

They are however likely to lead to significant population changes, particularly in Bramhall, and more rapid population growth than the official projections may suggest.



Additionally a Greater Manchester Spatial Framework is in development which is tasked with assessing economic and housing needs. This work has assessed the need for new housing across the conurbation and has identified the requirement for Stockport to deliver 19,300 dwellings in the period up to 2035.

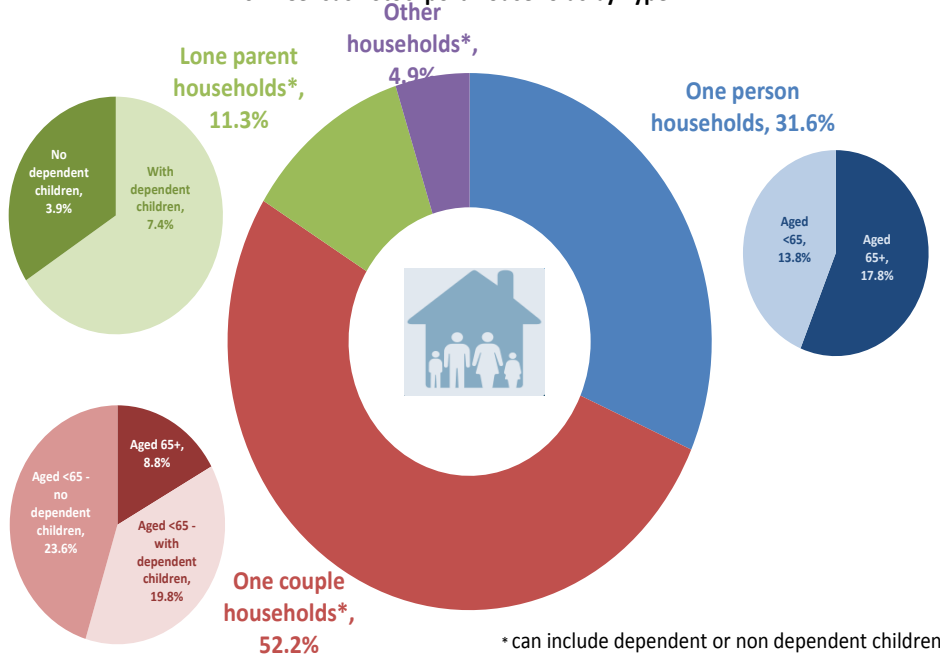
- Chester Road, Woodford** Redevelopment of the former Woodford Aerodrome site to provide up to 920 new dwellings with associated commercial and community space. This application was approved in 2015 and will be developed in a phased approach.
- Lisburne Lane, Offerton** Redevelopment of the former Dialstone Centre and Blackstone Field sites to provide 121 new dwellings, a new nursing and care home (140 beds), a new community hub, a new medical centre and commercial space. This application received permission in 2013 and construction is well under way.
- Midland Road, Bramhall** Proposed residential development comprising up to maximum of 163 dwelling units. This outline application received permission in 2013.
- Buckingham Road, Heaton Moor** Residential development over two sites comprising 198 dwellings in total with associated open space. Construction is now under way.
- Kingsway, Cheadle** Redevelopment of the former Barnes Hospital site to provide up to 300 new dwellings (apartments and housing). This application received permission in 2013 and work is now underway.
- Churchgate / Covent Garden / Hopes Carr / Wellington Street** A range of developments within the centre of Stockport to provide additional dwellings. These applications are at different stages of the planning and construction cycles .
- Brinnington** Development for up to 281 units across a number of sites in Brinnington was approved in 2015.
- MAN Diesel, Hazel Grove** Residential development of a total of 226 Units which is underway on previously industrial land.
- Former Bridgehall Sidings** Construction now started on 153 residential units.

As well as trends in overall numbers of people and the geographic variance there are other key demographic trends to consider:

- Changes in family and household structures
- Changes in ethnicity



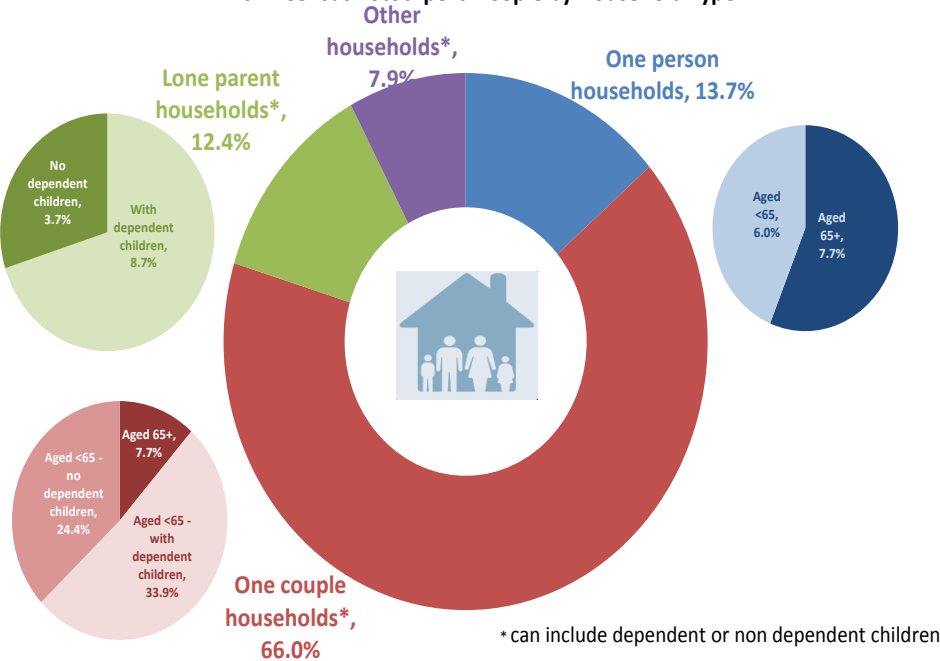
2011 Census - Stockport Households by Type



The 2011 census showed that there are 121,979 households in Stockport, with 280,900 residents.

38,535 people live in one person households, 21,657 of whom are aged 65+. One person households account for 30% of all households, but only 14% of residents. People who live on their own are at higher risk of social isolation.

2011 Census - Stockport People by Household Type



In total there are 32,702 households with people aged 65+ and 40,375 households with dependent children.

There are 15,400 dependent children living with one parent, a risk for vulnerability.

2,360 people live in communal establishments, 74% of whom are aged 65+.

The average household size is 2.3 people. Only 6% of households have 5 or more people



Brinnington & Central has the highest proportion of one person households, almost half of all households in this area. The majority of these single person households are for younger adults; although a quarter are aged 65+.

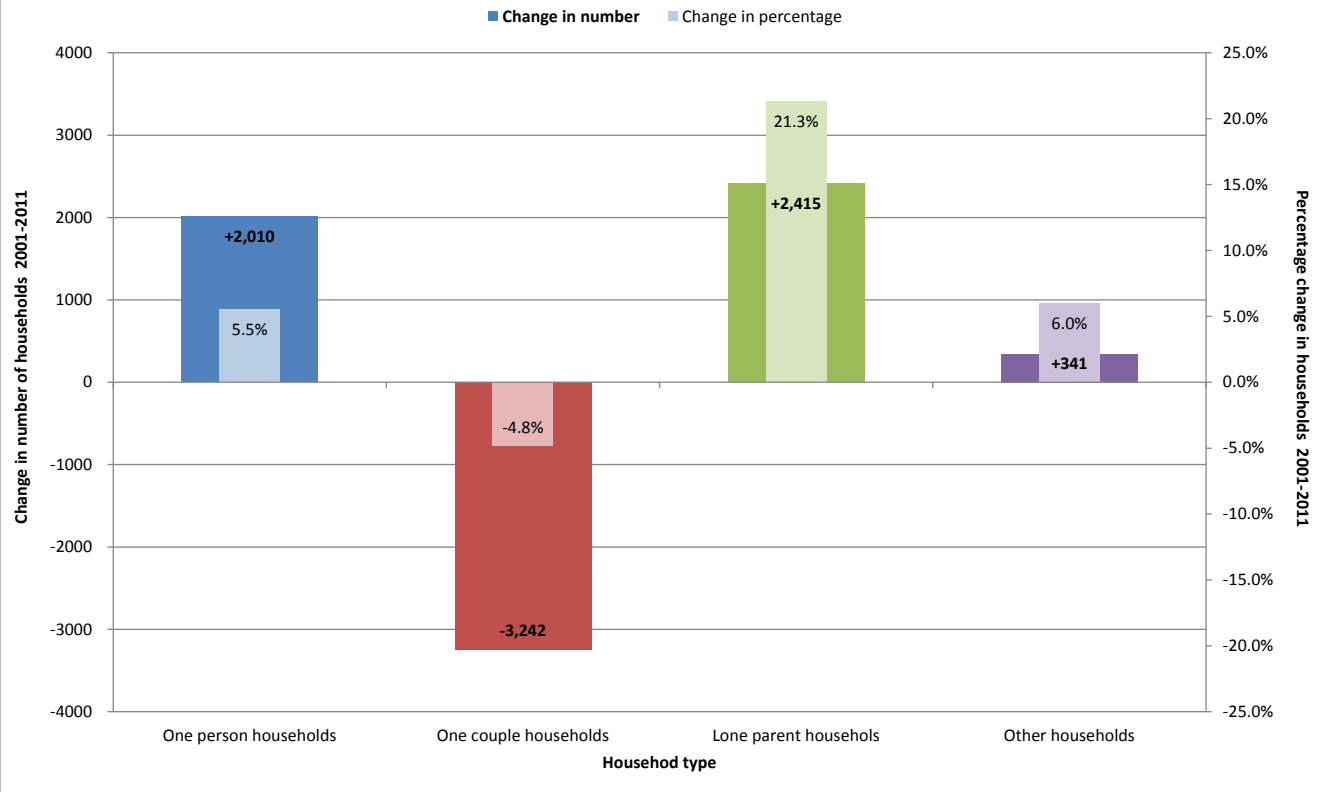
In more affluent areas the majority of one person households are for those aged 65+, up to 69% of all one person households in Bramhall South & Woodford.

Brinnington & Central, Davenport & Cale Green and Reddish North have the highest levels of lone parent households.

	One person households	One couple households	Lone parent households	Other households
Bramhall North	25.2%	61.3%	9.7%	3.8%
Bramhall South & Woodford	24.2%	65.7%	6.8%	3.3%
Bredbury & Woodley	31.2%	54.2%	10.5%	4.1%
Bredbury Green & Romiley	32.4%	50.7%	12.7%	4.3%
Brinnington & Central	47.5%	30.0%	16.7%	5.8%
Cheadle & Gatley	30.2%	55.9%	7.8%	6.1%
Cheadle Hulme North	31.8%	53.7%	9.8%	4.7%
Cheadle Hulme South	27.0%	59.1%	8.9%	4.9%
Davenport & Cale Green	32.6%	44.2%	16.6%	6.6%
Edgeley & Cheadle Heath	34.6%	45.7%	14.0%	5.7%
Hazel Grove	29.1%	56.3%	10.0%	4.6%
Heald Green	26.4%	57.1%	9.2%	7.3%
Heatons North	34.5%	51.3%	8.5%	5.7%
Heatons South	33.0%	52.3%	10.0%	4.8%
Manor	32.3%	49.7%	13.4%	4.6%
Marple North	24.3%	64.4%	7.6%	3.7%
Marple South	31.9%	56.6%	8.4%	3.1%
Offerton	29.3%	53.4%	12.4%	4.9%
Reddish North	32.3%	45.6%	16.3%	5.8%
Reddish South	34.7%	47.5%	12.6%	5.2%
Stepping Hill	30.3%	56.2%	9.5%	4.0%
<b>Stockport</b>	<b>31.6%</b>	<b>52.2%</b>	<b>11.3%</b>	<b>4.9%</b>

<b>KEY</b>	<b>Significantly lower than Stockport</b>	<b>Significantly higher than Stockport</b>
------------	---	--

### Changes in household composition in Stockport 2001-2011



The number of lone parent and one person households have increased over the last decade, perhaps leading to a more isolated population.

Hazel Grove and Brinnington & Central have experienced the largest increase in total households, and especially in one person and lone parent families.





Ethnic Group		Persons		Proportion	
		2001	2011	2001	2011
White	British	264,279	252,044	92.9%	89.0%
	Irish	4,155	3,938	1.5%	1.4%
	Other white	3,796	4,837	1.3%	1.7%
	<b>TOTAL WHITE</b>	<b>272,230</b>	<b>260,819</b>	<b>95.7%</b>	<b>92.1%</b>
Mixed	White & Black Caribbean	953	1,734	0.3%	0.6%
	White & Black African	413	775	0.1%	0.3%
	White & Asian	915	1,460	0.3%	0.5%
	Other mixed	745	1,135	0.3%	0.4%
	<b>TOTAL MIXED</b>	<b>3,026</b>	<b>5,104</b>	<b>1.1%</b>	<b>1.8%</b>
Asian or Asian British	Indian	1,867	2,786	0.7%	1.0%
	Pakistani	2,949	6,673	1.0%	2.4%
	Bangladeshi	353	705	0.1%	0.2%
	Chinese	1,315	1,722	0.5%	0.6%
	Other Asian	798	1,876	0.3%	0.7%
	<b>TOTAL ASIAN</b>	<b>7,282</b>	<b>13,762</b>	<b>2.6%</b>	<b>4.9%</b>
Black or Black British	Black Caribbean	660	745	0.2%	0.3%
	Black African	352	976	0.1%	0.3%
	Other Black	167	237	0.1%	0.1%
	<b>TOTAL BLACK</b>	<b>1,179</b>	<b>1,958</b>	<b>0.4%</b>	<b>0.7%</b>
Other Ethnic Groups	Arab	-	727	-	0.3%
	Any other ethnic group	-	905	-	0.3%
	<b>TOTAL OTHER</b>	<b>809</b>	<b>1,632</b>	<b>0.3%</b>	<b>0.6%</b>

Stockport is less ethnically diverse than the national average with 92% of the population identifying themselves as white in the 2011 Census compared to 86% nationally.

People who describe themselves as Asian Pakistani are the largest Black or Minority Ethnic (BME) group in Stockport, at more than 6,600.

Over time however the diversity of the population is increasing and the number of people identifying themselves as from a BME group almost doubled from 2001 to 2011, to 22,500.

Religious Group		Persons		Proportion	
		2001	2011	2001	2011
Religion	Christian	214,610	179,055	75.4%	63.2%
	Muslim	4,977	9,431	1.7%	3.3%
	Jewish	1,654	1,340	0.6%	0.5%
	Hindu	1,331	1,666	0.5%	0.6%
	Other religions	1,443	2,147	0.5%	0.8%
	No religion	40,346	71,126	14.2%	25.1%
	Religion not stated	20,167	18,510	7.1%	6.5%

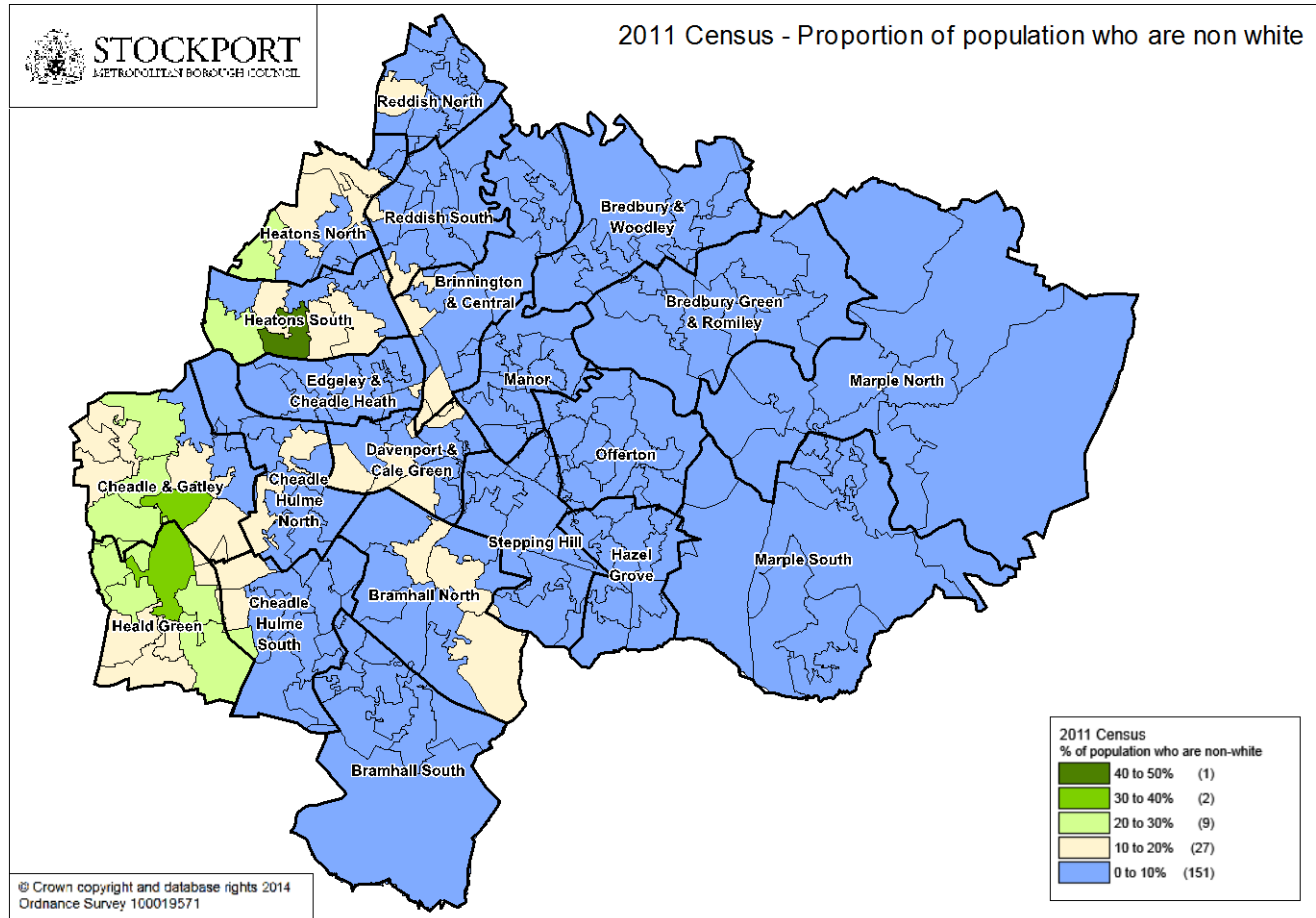
Stockport has seen an increase in both the Muslim population and people of no religion over the last decade. On the whole these populations are younger than average.



The distribution of the BME population across Stockport is not even; the areas of Heald Green, Cheadle & Gatley and Heaton South are particularly diverse. In each of these areas there are particularly high rates of the population who identify themselves as from an Asian Pakistani or Indian background, the total BME population in these wards approaches 20%.

These areas are also those with higher than average rates of people whose religion is Muslim; in fact 50% of Muslims in Stockport live in one of these three wards.

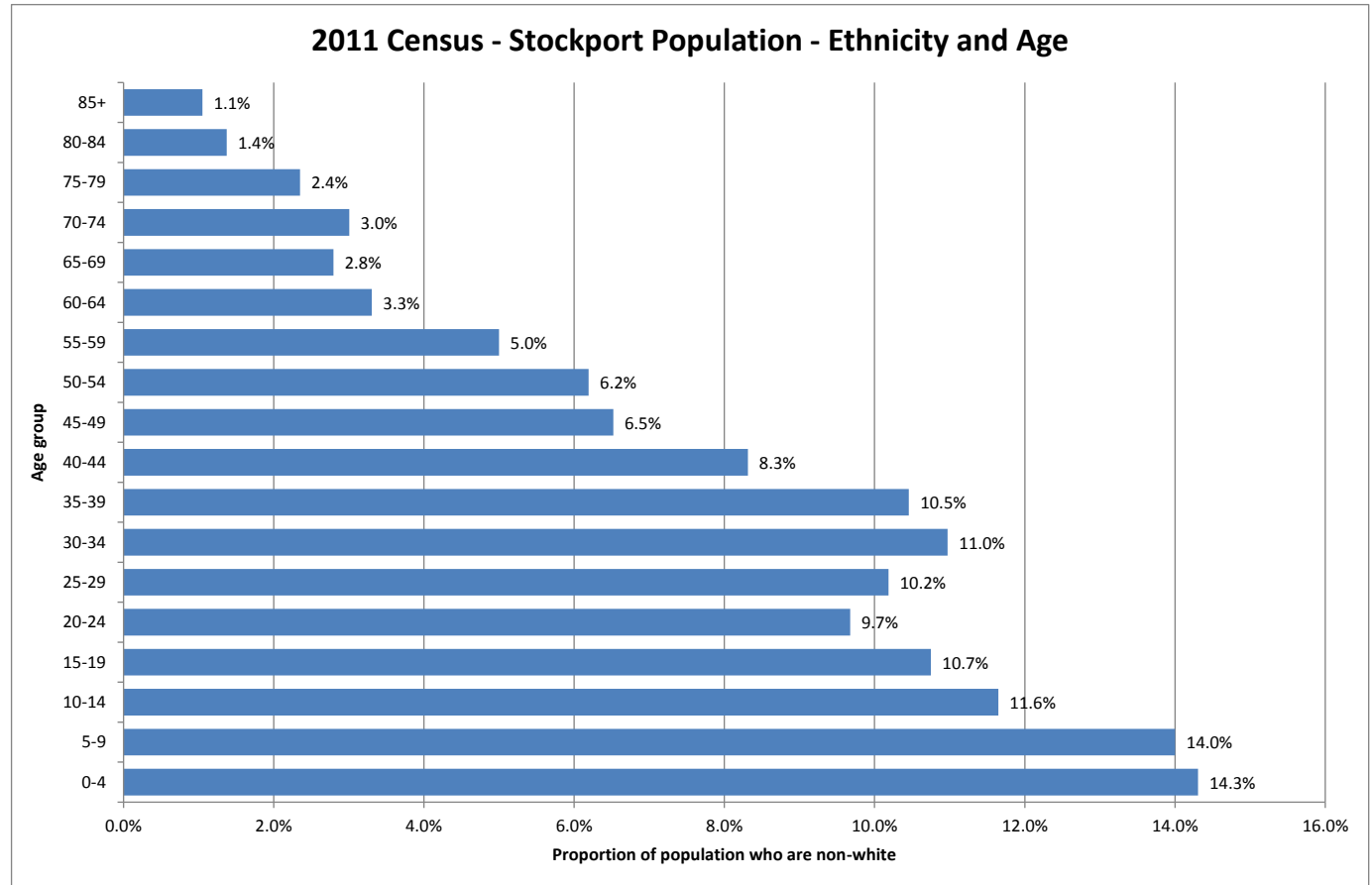
Gatley also has a community of residents whose religion is Jewish.



The age patterns of Stockport's BME populations are also different, with a far younger profile than average.

20% of babies born in Stockport in 13-14 were non-white, and rates are almost 50% in Heald Green and Cheadle & Gatley.

The population is therefore likely to continue to become more diverse.



93.2% of Stockport's population were born in the UK, and a further 4.6% have been living in the UK for at least 10 years.

At least 96% of people in Stockport have English as a main language.

## Other population trends from 2011 Census:

- Population density
  - Stockport is 3<sup>rd</sup> most densely populated borough in Greater Manchester at 22.5 residents per hectare.
  - Manchester is the most dense (43.5), Rochdale the least (13.4)
  - Within Stockport density varies from 5.2 residents per hectare in Marple North to 58.9 in Reddish North reflecting the different amounts of greenspace and household size in these areas.
- Daytime population
  - Stockport's daytime (weekday) population is 271,992
  - This represents a 4% reduction on the resident population as people commute for work or study.

## Key summary:

- Population of Stockport is now expected to grow:
  - There are currently more births than deaths
  - The population is living longer
  - There are significant planned housing and economic developments
- The population is likely to be needier:
  - Birth rates and numbers have grown most rapidly in deprived areas, where there are potentially more children at risk
  - Ageing population, with increasing and complex needs
  - More people are living in one person or lone parent households
- Stockport has seen a trend of population growth being more rapid in deprived areas over the last decade, this may change as there are some planned large scale housing developments in the less deprived areas
- The population of Stockport continues to become more ethnically diverse, especially in younger populations to the west of the borough. Immigrations rates in Stockport are however lower than the national average.

Further JSNA products will examine vulnerable and at risk populations, trends in healthy life expectancy and impacts on health and social care services and demands.