



Stockport JSNA

joint strategic needs assessment



2015 JSNA

Health service locations

April 2016

CONTENTS

3	<u>Introduction</u>
4	<u>GP Surgeries and Foundation Trusts</u>
5	<u>Stockport residents registered with non Stockport GP</u>
6	<u>Non Stockport residents registered with Stockport GP</u>
7	<u>Stockport and cross border pharmacies</u>
8	<u>Dental practices</u>
9	<u>Opticians</u>
10	<u>Care homes</u>
11	<u>Direct centres</u>
12	<u>Housing schemes</u>
13	<u>Hospital admissions to major local trusts</u>
14	<u>Average Distances</u>
15	<u>Summary</u>

Stockport health and care services need to be fit for the purpose of caring for 285,032 residents (2013).

These residents are spread across 4 localities and have varying degrees of need and deprivation. Resident numbers are estimated at:

- 74,064 (26.0%) in Bramhall and Cheadle;
- 69,946 (24.5%) in Heaton and Tame Valley;
- 51,228 (18.0%) in Marple and Werneth; and
- 89,794 (31.5%) in Stepping Hill and Victoria

There are Stockport residents who use the health services of other areas, and there are many users of Stockport health services who do not live within the local area.

This briefing displays the distribution of locations for health and care in Stockport at 2015 and some of these cross border flows of activity.

Service locations change however, for the most up to date information on locations visit:

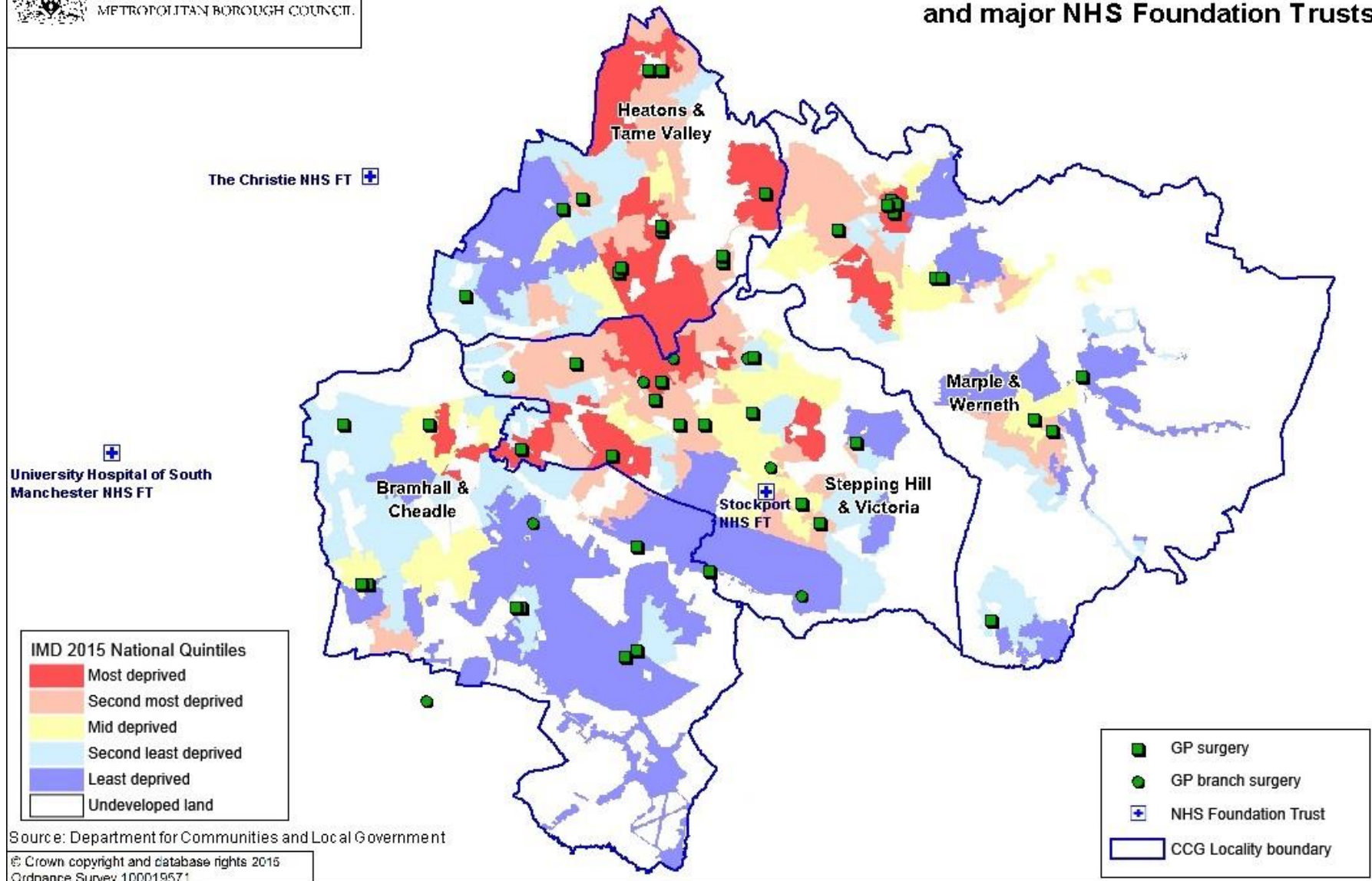
<http://www.stockport.gov.uk/services/socialcarehealth/healthandwellbeing/nhshoicesmap>

There are 45 GP Practices and 8 branch surgeries in Stockport spread evenly throughout the localities. The majority of Stockport resident hospital admissions are to the four hospital trusts shown.



Central Manchester University Hospitals NHS FT

Joint Strategic Needs Assessment 2015 Location of Stockport GP surgeries and major NHS Foundation Trusts



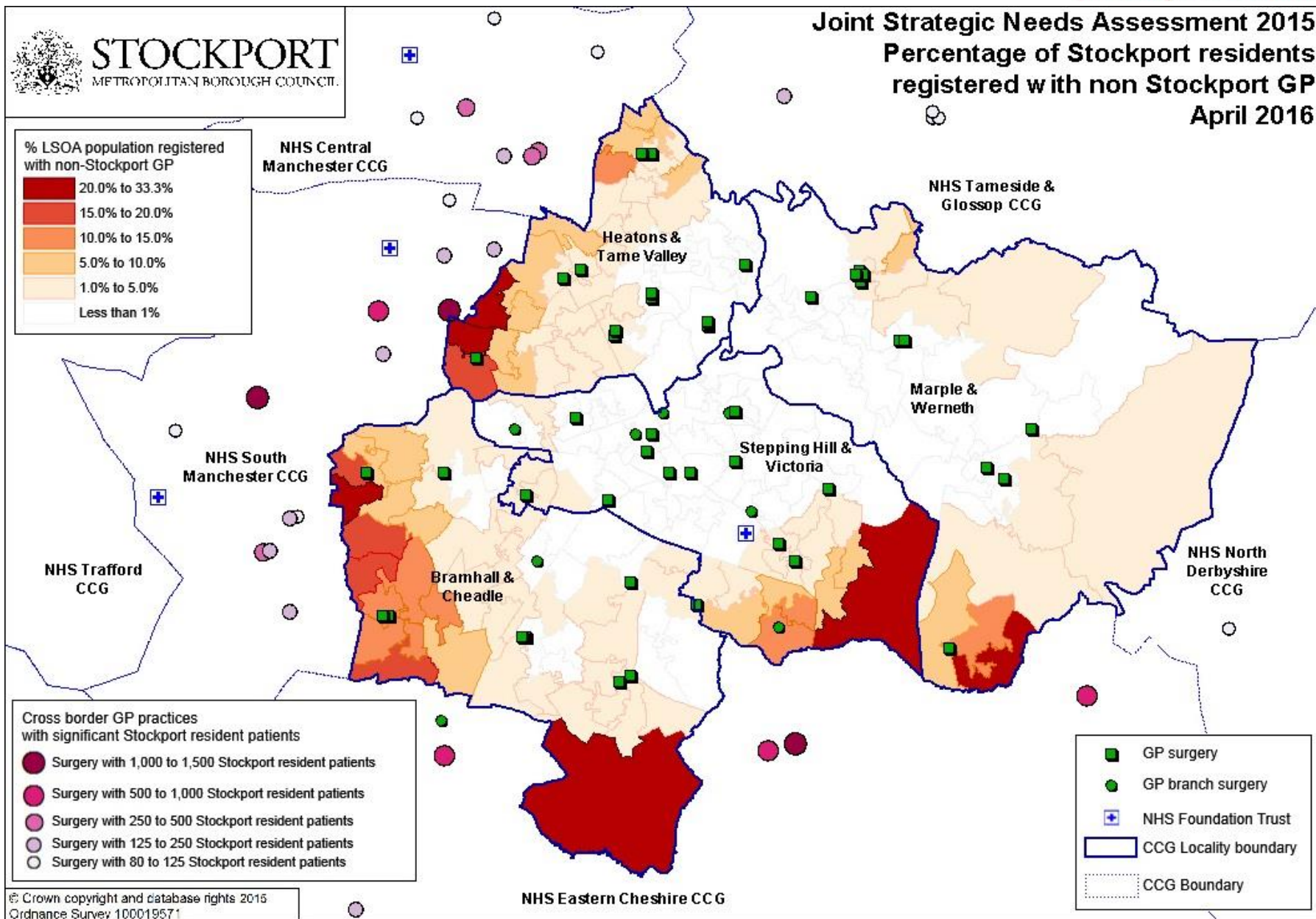
Around 11,000 of Stockport residents (3.6%) are registered with a non Stockport GP. In some areas, mostly along the western edge, up to a third of residents cross the border to see a GP.



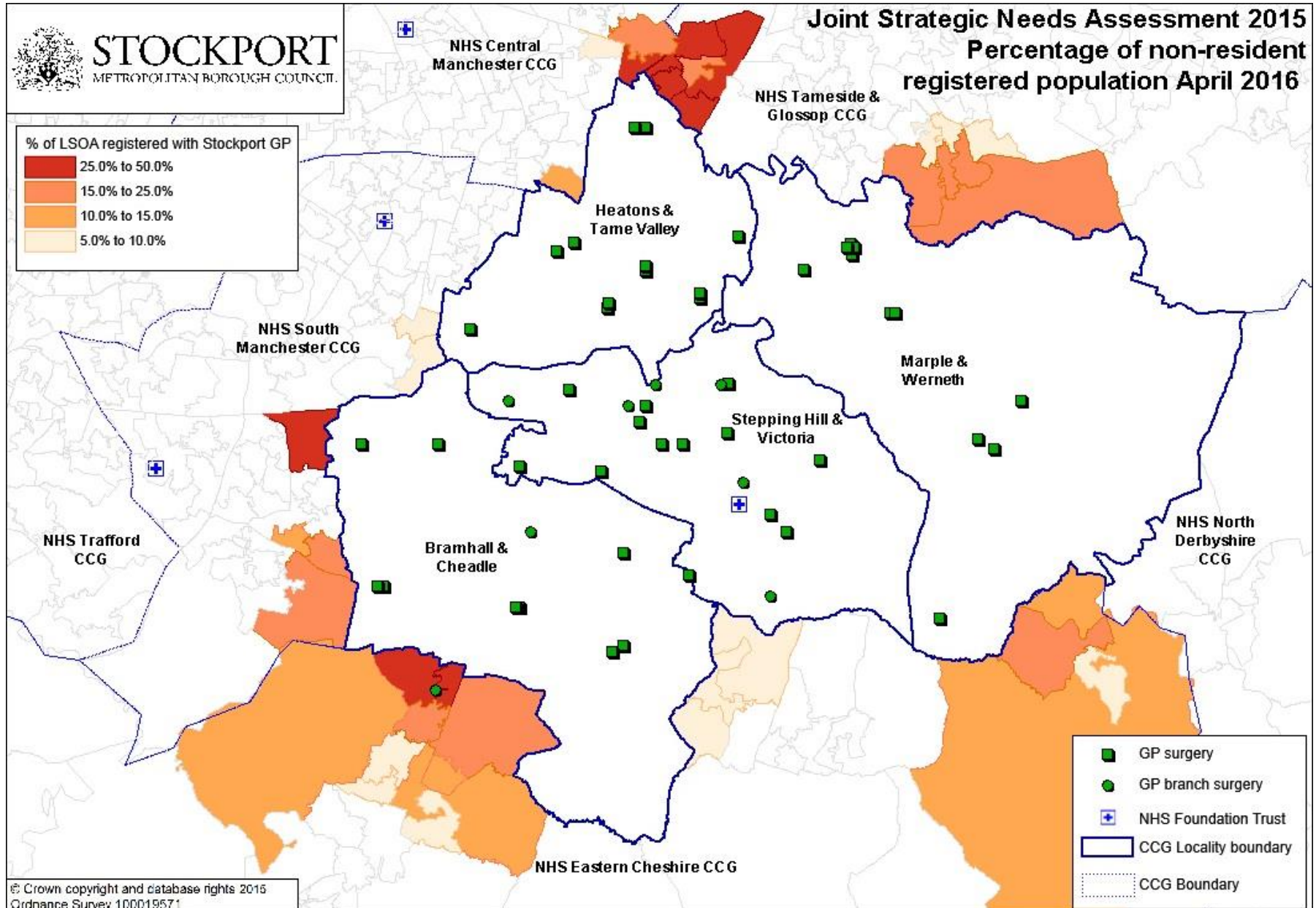
STOCKPORT healthwatch Stockport Clinical Commissioning Group

Stockport JSNA

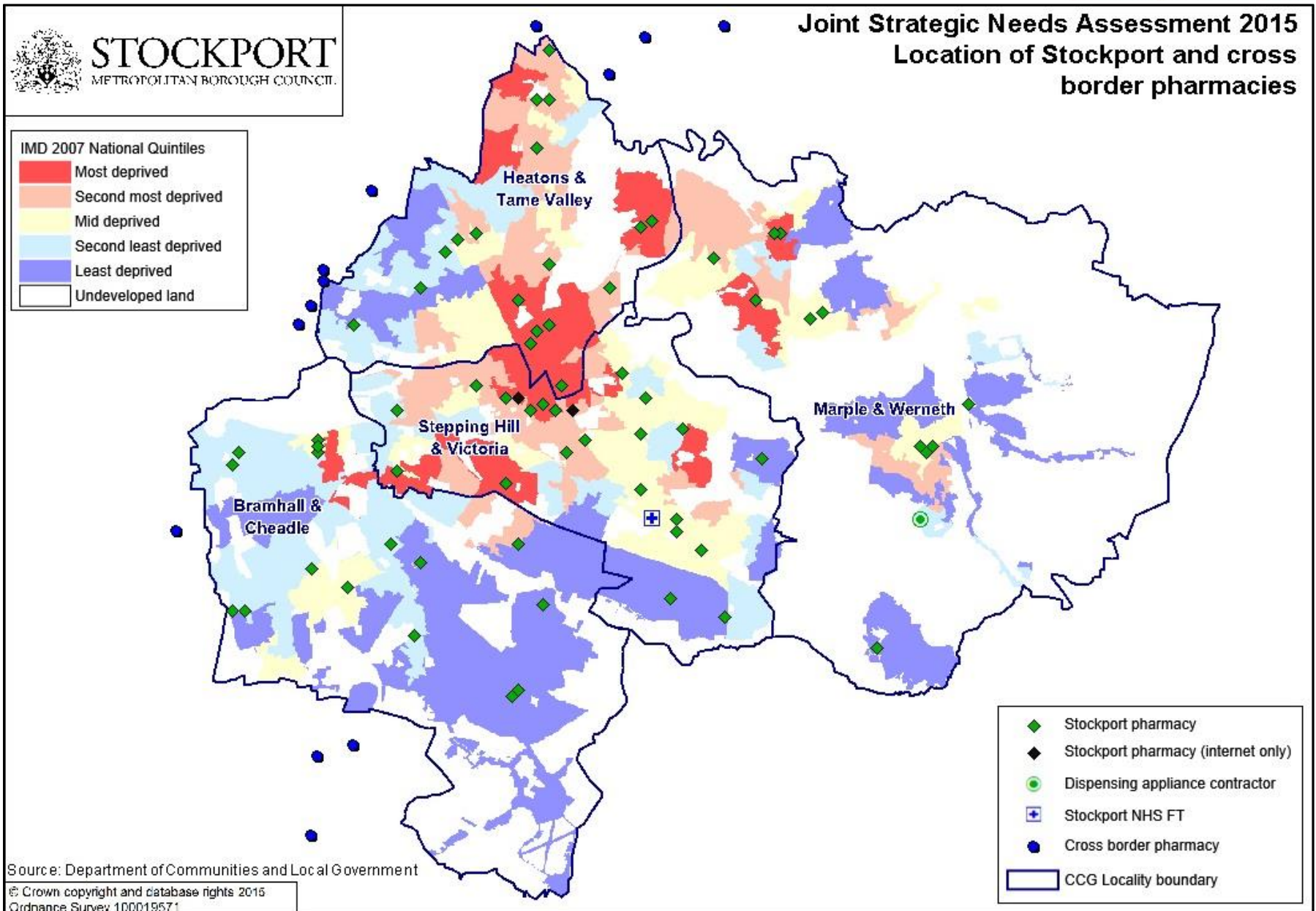
joint strategic needs assessment



There are over 15,000 people registered with a Stockport GP who live outside Stockport. The branch surgery located in Eastern Cheshire is a main contributor to this figure.



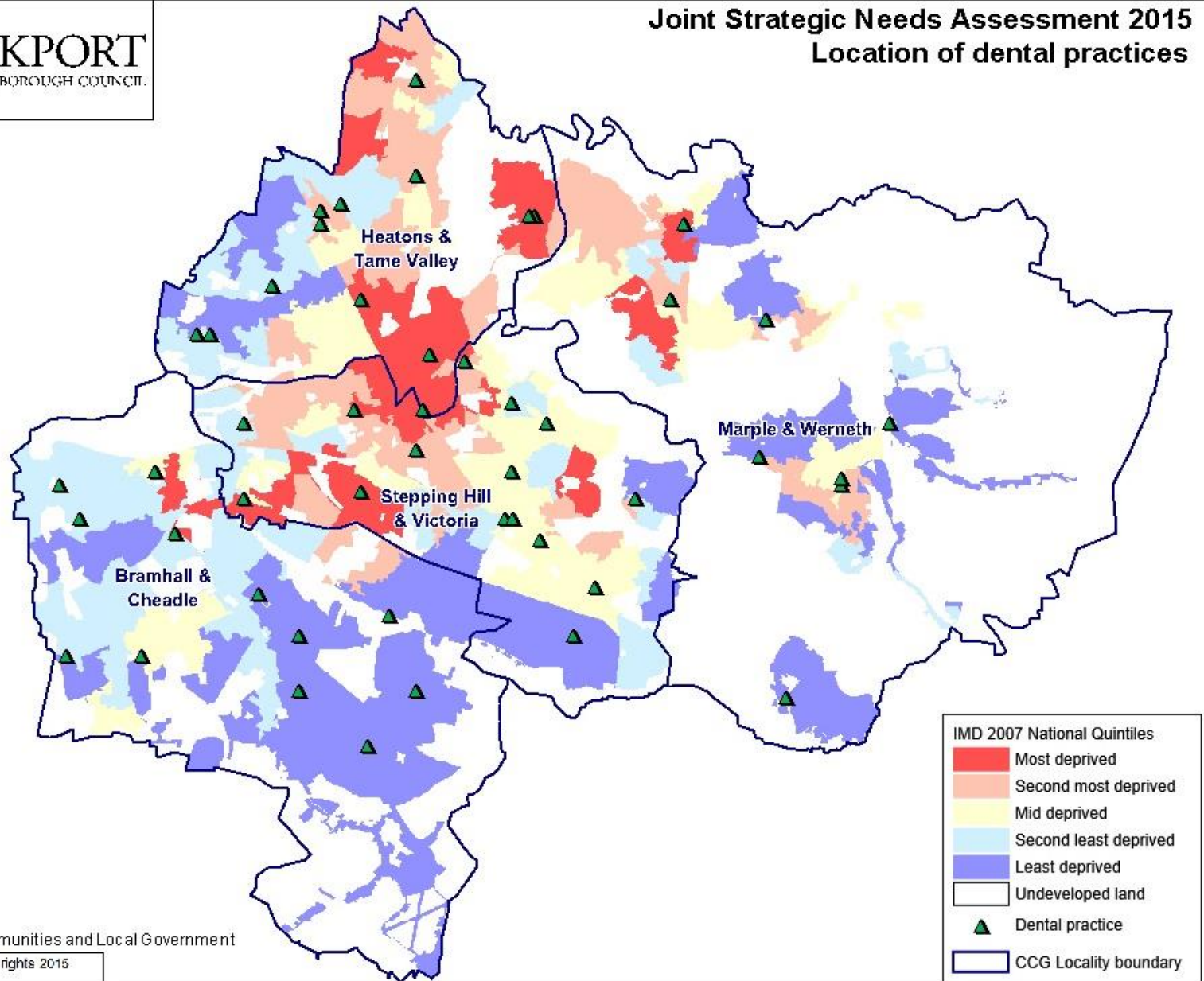
There are 69 pharmacies, 2 internet only pharmacies and 1 dispensing appliance contractor within Stockport. The main pharmacies used by residents across the border are also included.



There are 48 dental practices within Stockport. These practices are located evenly throughout the borough in the main district centres of Stockport.



Joint Strategic Needs Assessment 2015 Location of dental practices



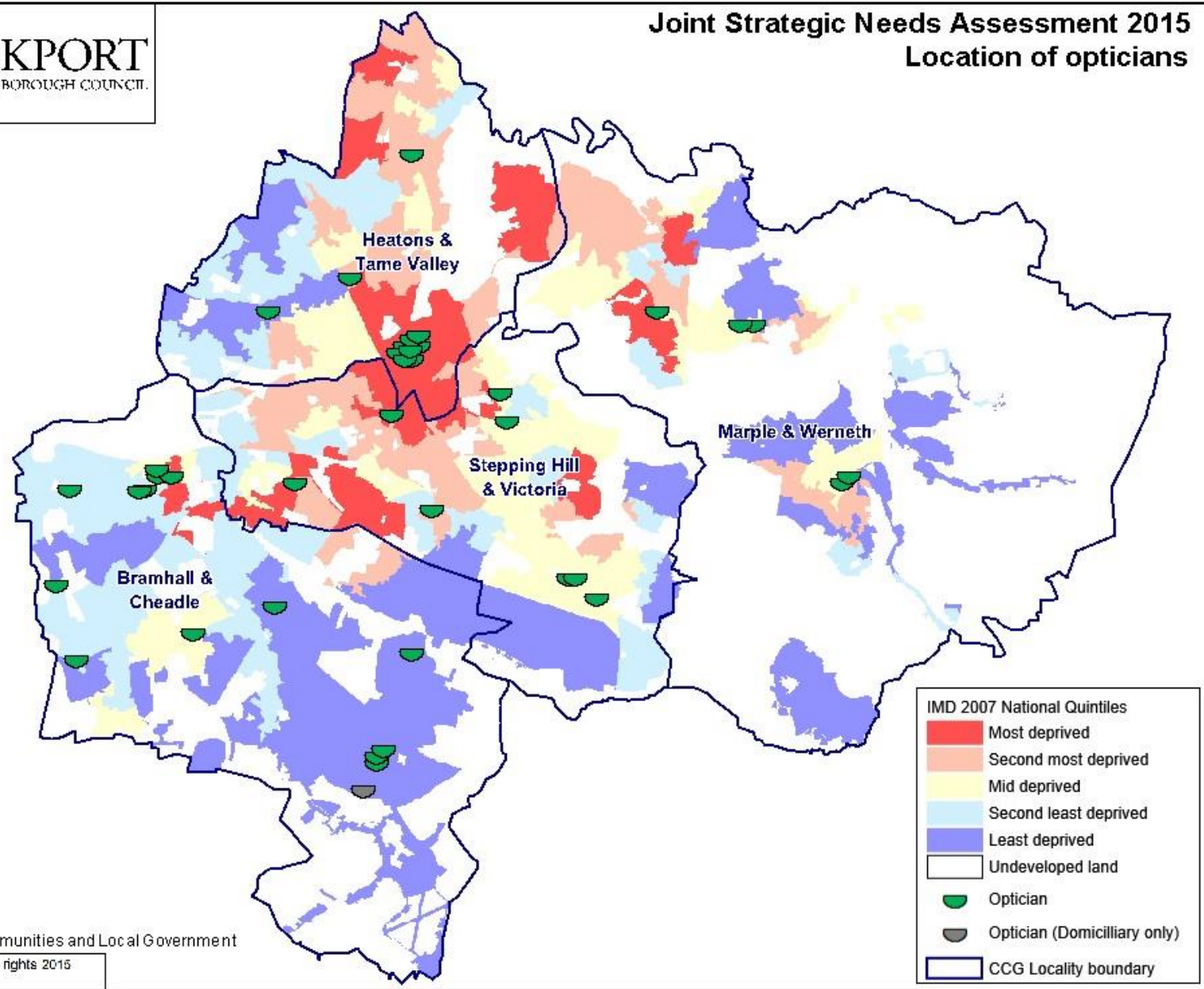
Source: Department of Communities and Local Government

© Crown copyright and database rights 2015
Ordnance Survey 100019571

There are 38 opticians within Stockport and one internet only provider. There is a large concentration of opticians in Stockport town centre as well as other district centres.



Joint Strategic Needs Assessment 2015 Location of opticians

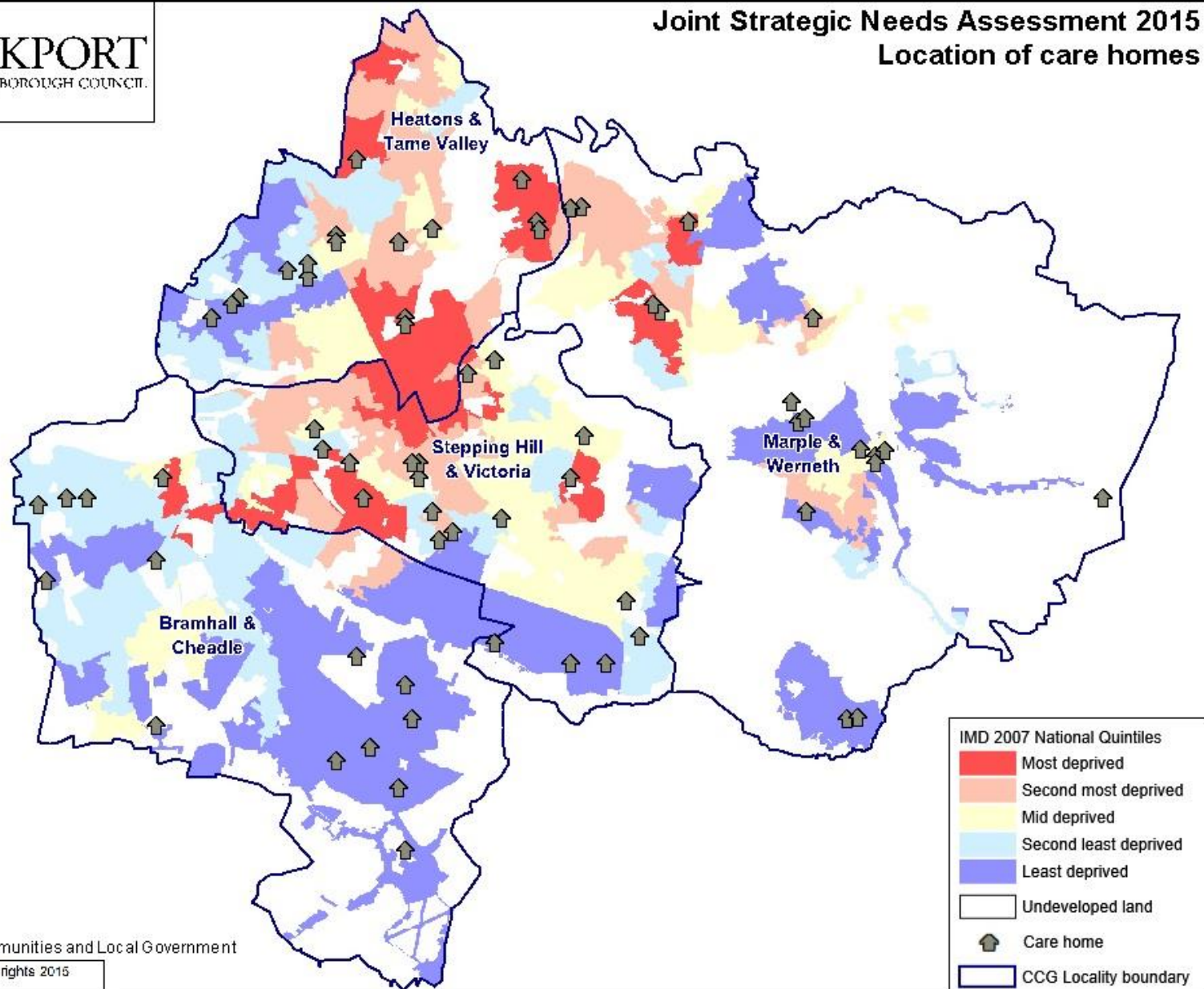


Source: Department of Communities and Local Government
© Crown copyright and database rights 2015
Ordnance Survey 100019571

There are a total of 67 care homes in Stockport. 48 offer residential care, 11 nursing care and 8 a combination of both. The homes are evenly spread throughout each locality.



Joint Strategic Needs Assessment 2015 Location of care homes

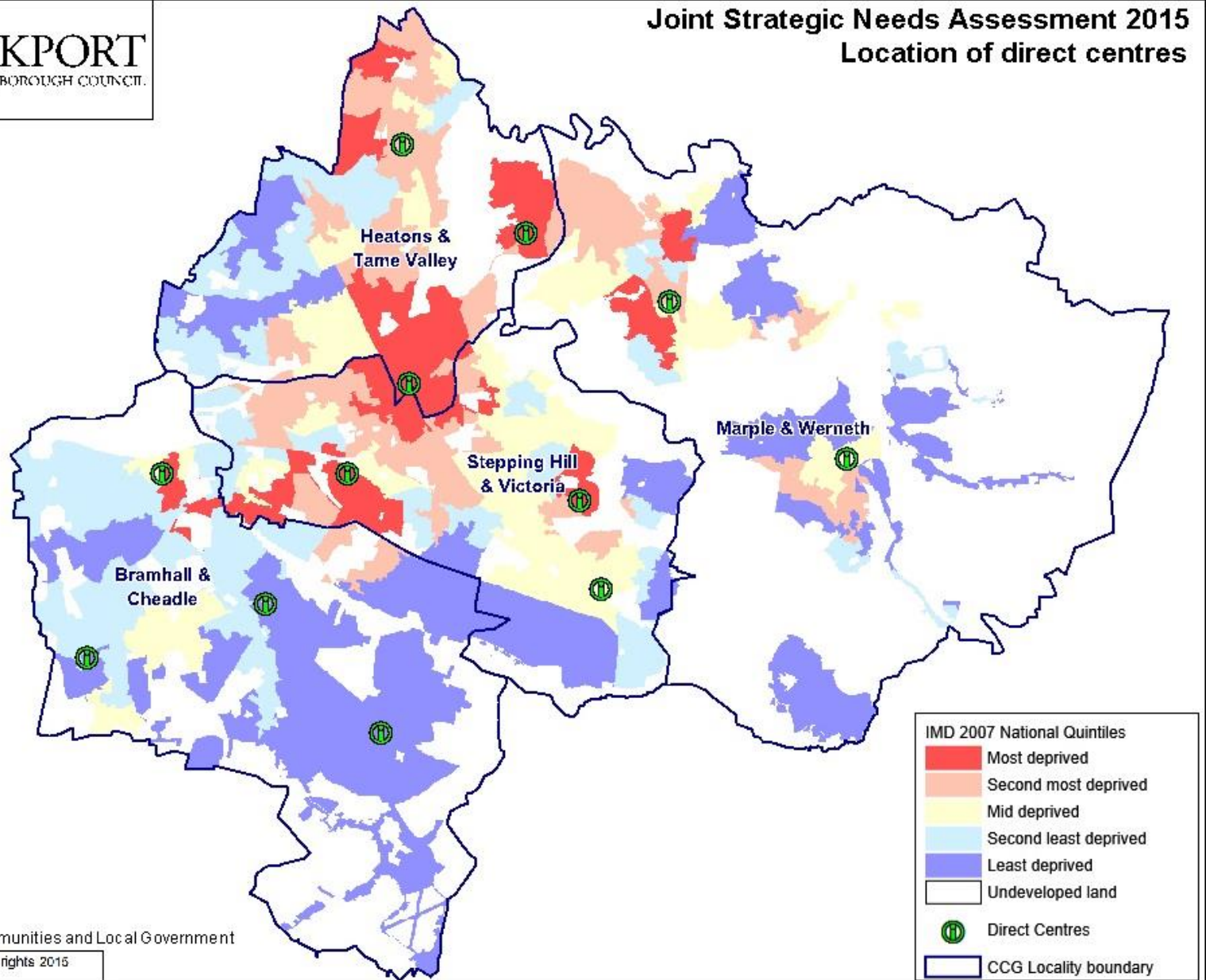


Source: Department of Communities and Local Government
© Crown copyright and database rights 2015
Ordnance Survey 100019571

There are 12 Direct Centres in Stockport where residents can access council services, advice and local information. The main Direct Centre can be found in Fred Perry House.



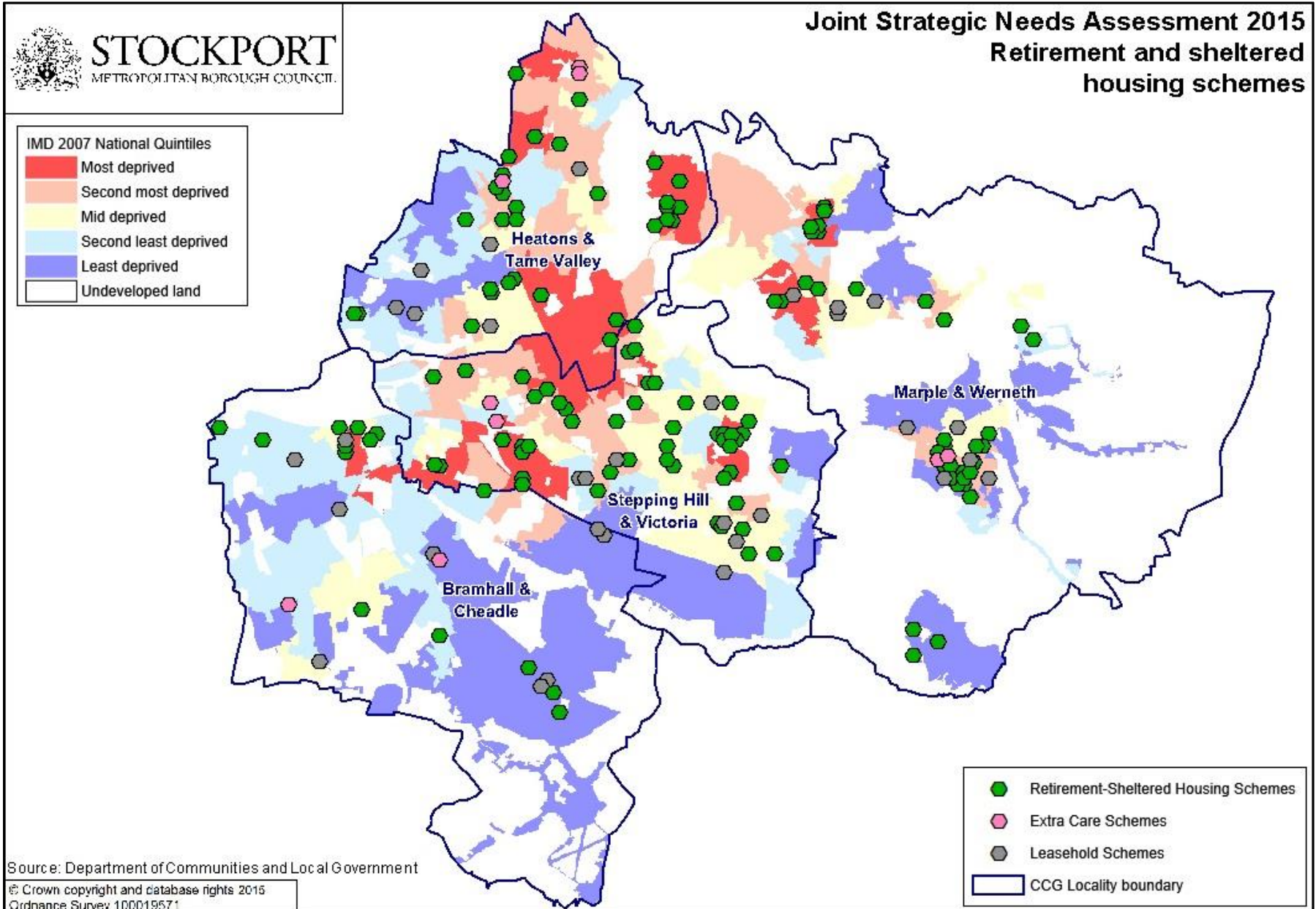
Joint Strategic Needs Assessment 2015 Location of direct centres



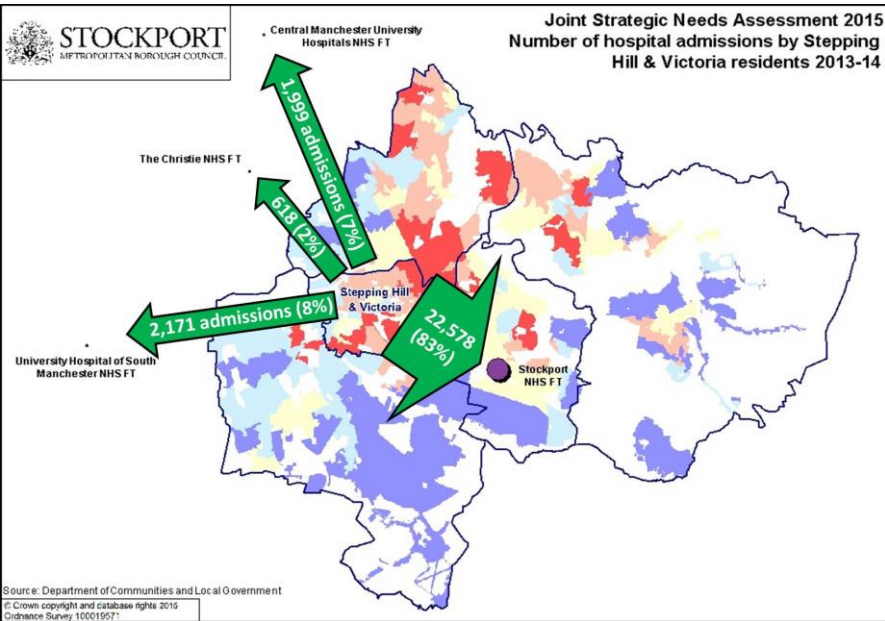
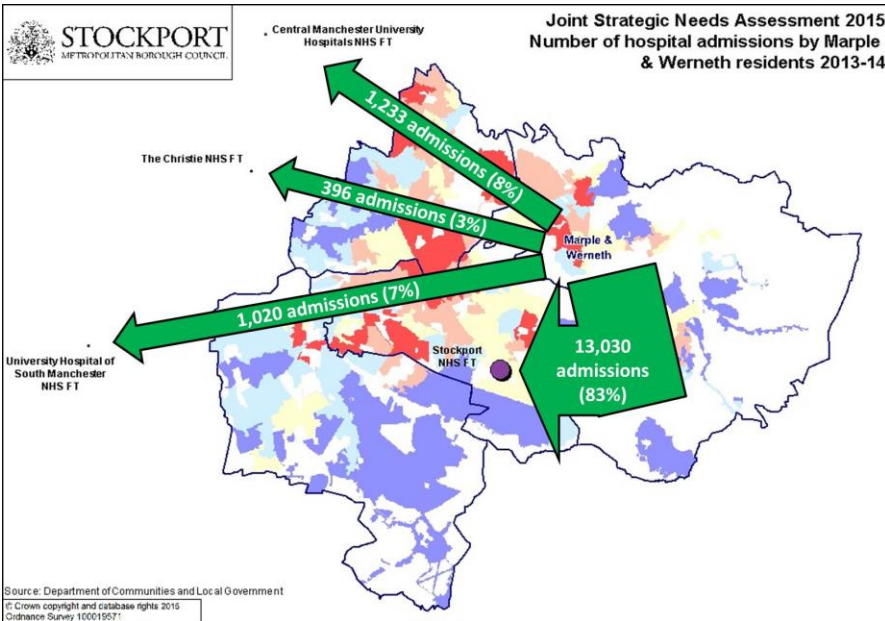
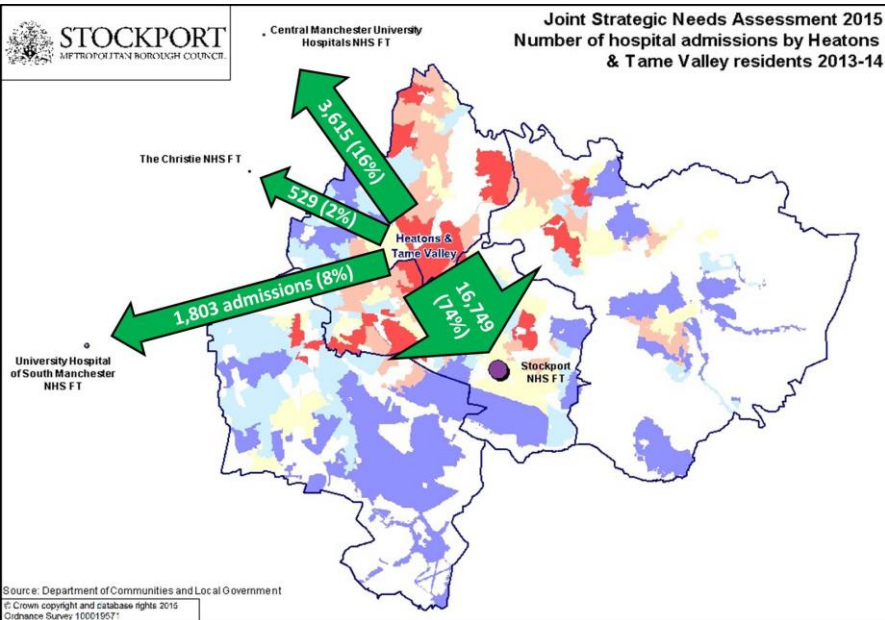
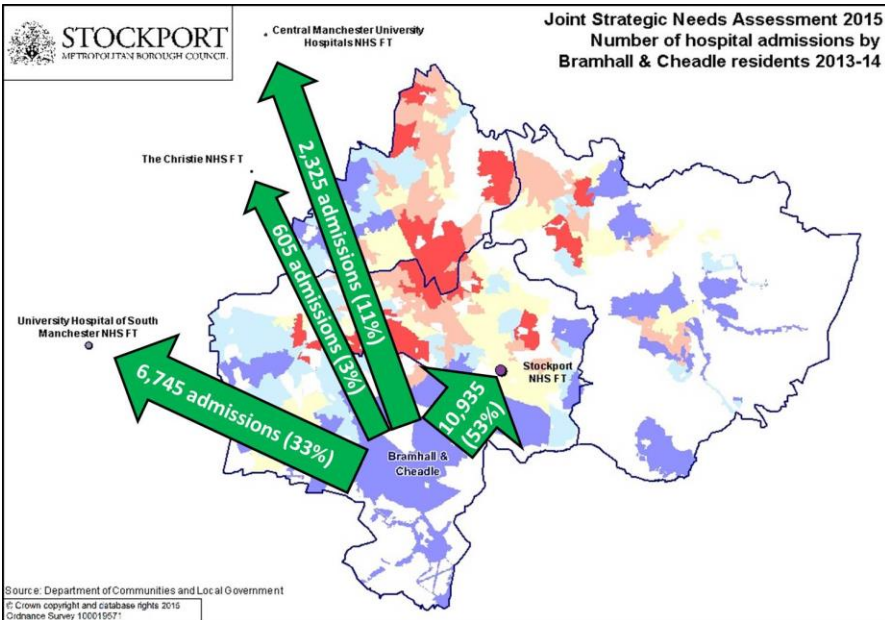
Source: Department of Communities and Local Government

© Crown copyright and database rights 2015
Ordnance Survey 100019571

There are 170 housing schemes for older people in Stockport run by 17 providers. 43% of schemes are provided by one company, Stockport Homes, which exists to manage the council's housing stock.



In 2013-14 there were over 86,000 admissions to hospital by Stockport residents. 73% of admissions were to Stockport NHS Foundation Trust whilst 23,000 were admitted elsewhere.



Average distances to services



Stockport Ward	GP Practice	Pharmacy	Optician	Dentist	Care Home	Direct Centre
Bramhall North	605	610	1,141	593	549	1,295
Bramhall South & Woodford	778	661	697	640	459	900
Bredbury & Woodley	575	532	1,258	684	602	1,028
Bredbury Green & Romiley	806	602	552	628	645	1,021
Brinnington & Central	492	296	723	446	526	540
Cheadle & Gatley	539	466	457	404	386	997
Cheadle Hulme North	527	449	843	498	1,089	844
Cheadle Hulme South	726	511	1,085	673	1,148	1,068
Davenport & Cale Green	413	441	825	503	345	829
Edgeley & Cheadle Heath	427	353	621	440	643	945
Hazel Grove	506	439	651	580	532	753
Heald Green	686	660	784	589	871	709
Heatons North	666	508	867	469	386	2,017
Heatons South	688	563	707	539	647	1,937
Manor	411	337	539	374	586	1,242
Marple North	1,033	1,023	1,412	915	876	1,382
Marple South	726	742	1,566	719	730	1,790
Offerton	549	402	1,160	499	677	799
Reddish North	563	334	942	540	1,306	865
Reddish South	593	493	578	522	448	1,180
Stepping Hill	576	484	742	544	425	1,268
Stockport average	610	511	853	557	644	1,093

The above table is a rough estimate of the average distance (in metres as the crow flies) a resident of each ward has to travel to their nearest health service location.

The calculation takes no account of population density and therefore distances will be skewed by remote areas where there is little habitation. The Stockport average is a straightforward average of all the distances. As Marple North and Marple South are amongst the least populated areas in Stockport the fact that they are furthest away from health services is not surprising and not particularly critical.

Key Summary:

- Health services within Stockport are reasonably well distributed throughout the borough with concentrations in the town centre and main district centres;
- The vast majority of Stockport residents are within easy reach of a GP surgery and a pharmacy;
- The net effect of people travelling outside their local authority to access GP services is that Stockport imports around 4,000 patients;
- There were over 86,000 admissions to hospitals in 2013-14, one admission for every three people in the borough;
- 73% of admissions were at Stepping Hill Hospital whilst there were 14% and 11% respectively at South Manchester and Central Manchester Hospital Trusts. There are a relatively small number of admissions to Pennine Care, the main mental health care provider.
- As the population is ageing and there are significant private housing developments planned in the area, health service provision may need to be reassessed in the near future.