



Stockport JSNA

joint strategic needs assessment



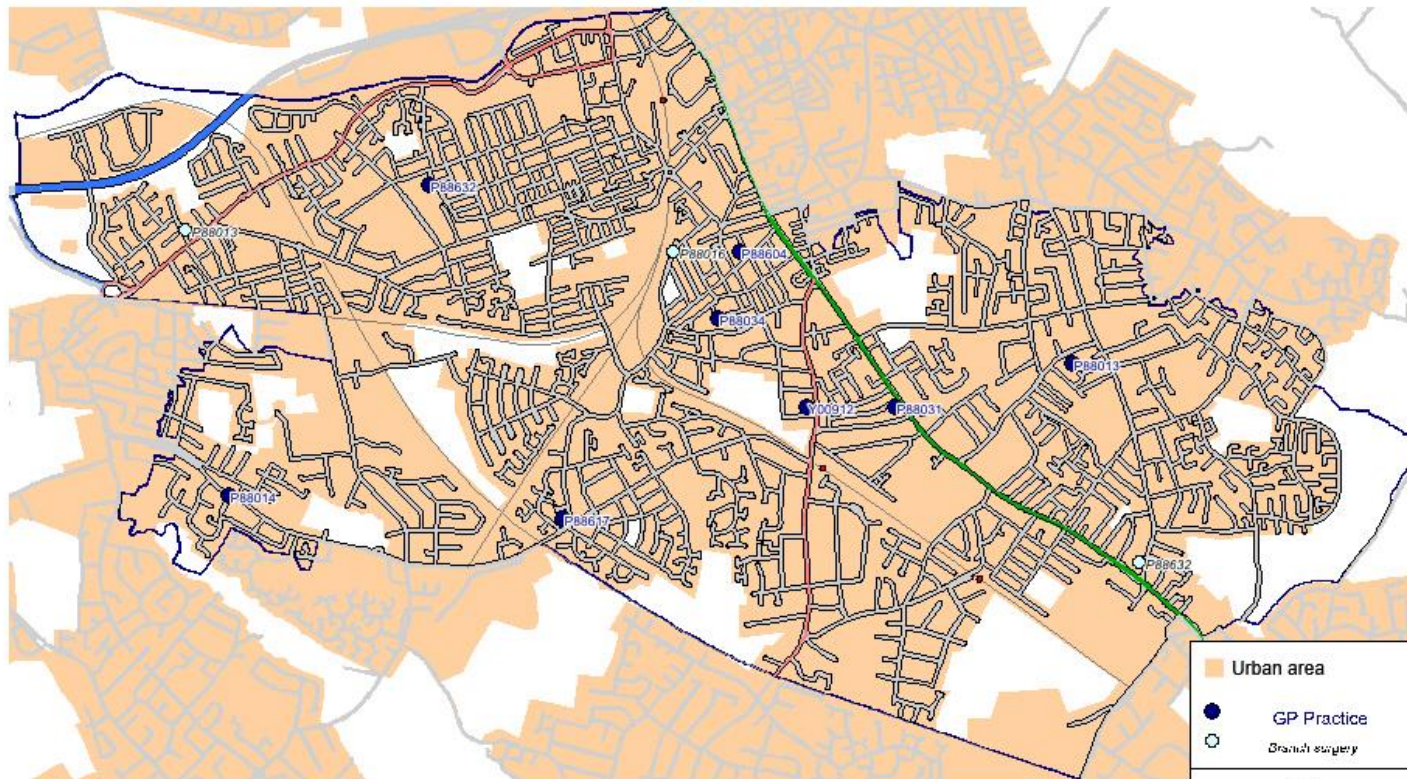
Victoria Neighbourhood

Headline Profile

October 2015



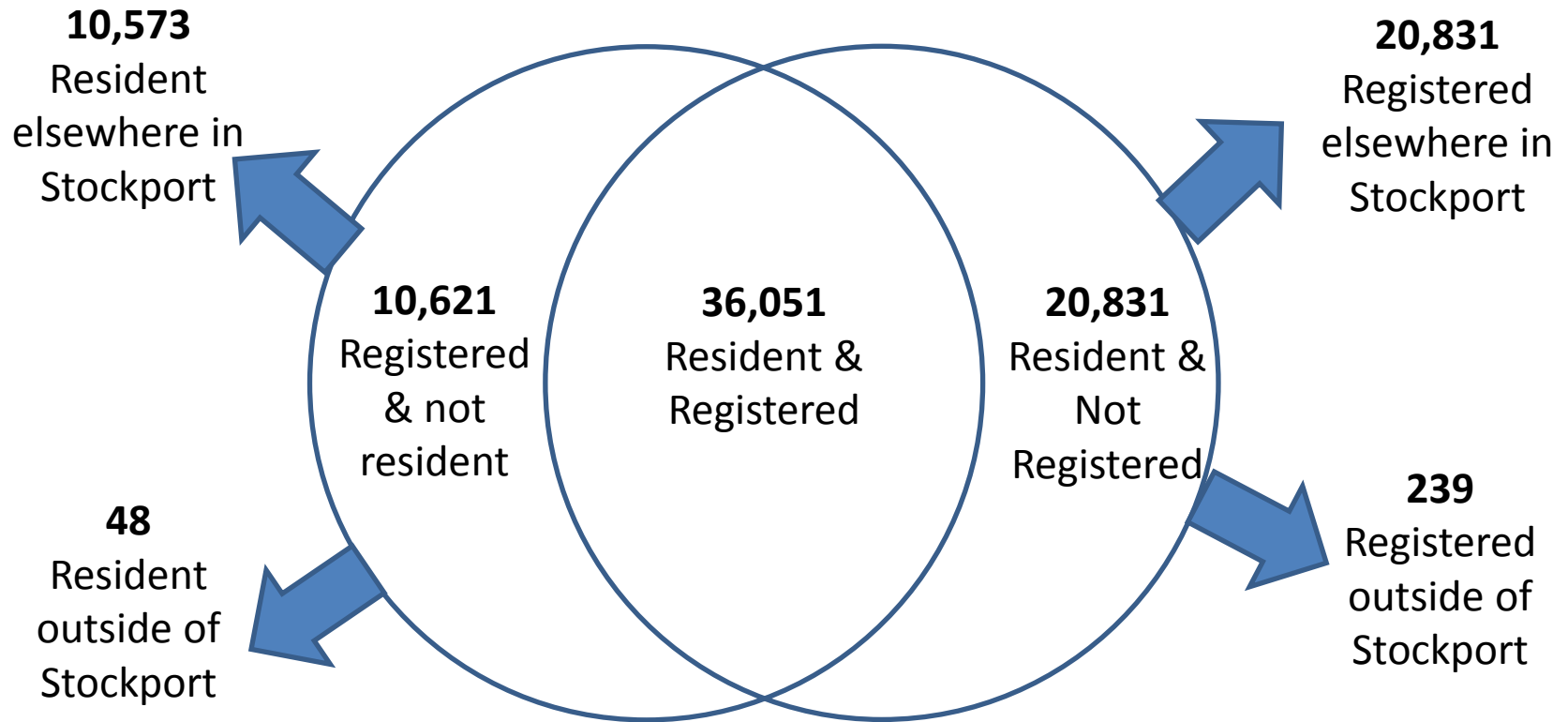
Victoria Neighbourhood



	Urban area
	GP Practice
	Branch surgery
	M60
	A6
	A34
	Other A-Roads
	B-Roads & other roads

1 cm = 0.1729km

- 57,121 residents (HSCIC)
- 46,672 registered with GPs in area (HSCIC)



- 54,851 residents (ONS)
- 46,700 registered (PCIS)

Resident age profile			
Age Group	Number of people	% of people	Stockport %
0 - 4	4,053	7.4%	6.2%
5 - 19	9,904	18.1%	17.4%
20 - 64	32,916	60.0%	57.3%
65 - 84	6,920	12.6%	16.6%
85+	1,058	1.9%	2.5%
TOTAL	54,851	-	-
65+	7,978	14.5%	19.1%

Registered age profile			
Age Group	Number of people	% of people	Stockport %
0 - 4	3,105	6.6%	5.9%
5 - 19	8,337	17.9%	16.7%
20 - 64	28,542	61.1%	58.7%
65 - 84	5,842	12.5%	16.2%
85+	874	1.9%	2.5%
TOTAL	46,700	-	-
65+	6,716	14.4%	18.6%

- LTC status for registered population:

	0-64	65+	Total
Not on long term condition register	26,636 - 66.6%	1,316 - 19.6%	27,952 - 59.8%
On at least 1 LTC register	13,380 - 33.4%	5,406 - 80.4%	18,786 - 40.2%

- Disease register counts for registered population:

	0-64	65+	Total	% aged 65+	DSR	Stockport DSR
Hypertension	2,592	3,478	6,070	57.3%	15,961.8	14,730.6
CHD	493	1,226	1,719	71.3%	4,715.2	4,180.2
Stroke / TIA	235	670	905	74.0%	2,500.9	2,114.7
Asthma	2,687	576	3,263	17.7%	7,181.1	6,589.2
COPD	486	831	1,317	63.1%	3,538.9	2,366.9
CKD	142	992	1,134	87.5%	3,248.0	2,602.7
Diabetes	1,128	1,179	2,307	51.1%	5,916.9	4,996.7
Epilepsy	321	69	390	17.7%	858.2	790.4
Mental Health (QoF)	359	89	448	19.9%	995.5	807.7
Depression	4,263	585	4,848	12.1%	10,443.2	8,643.0
Anxiety	6,198	1,249	7,447	16.8%	16,424.1	13,275.7
Dementia	9	346	355	97.5%	1,047.8	913.1
Glaucoma	70	203	273	74.4%	758.9	849.4
AMD	13	181	194	93.3%	569.5	481.0
History of fall	1,044	715	1,759	40.6%	4,235.3	3,801.4
Cancer diagnosed since 2003	451	629	1,080	58.2%	2,830.0	2,705.4

< 20% lower than Stockport average

> 10% higher than Stockport average

- **Cancer screening for registered population:**

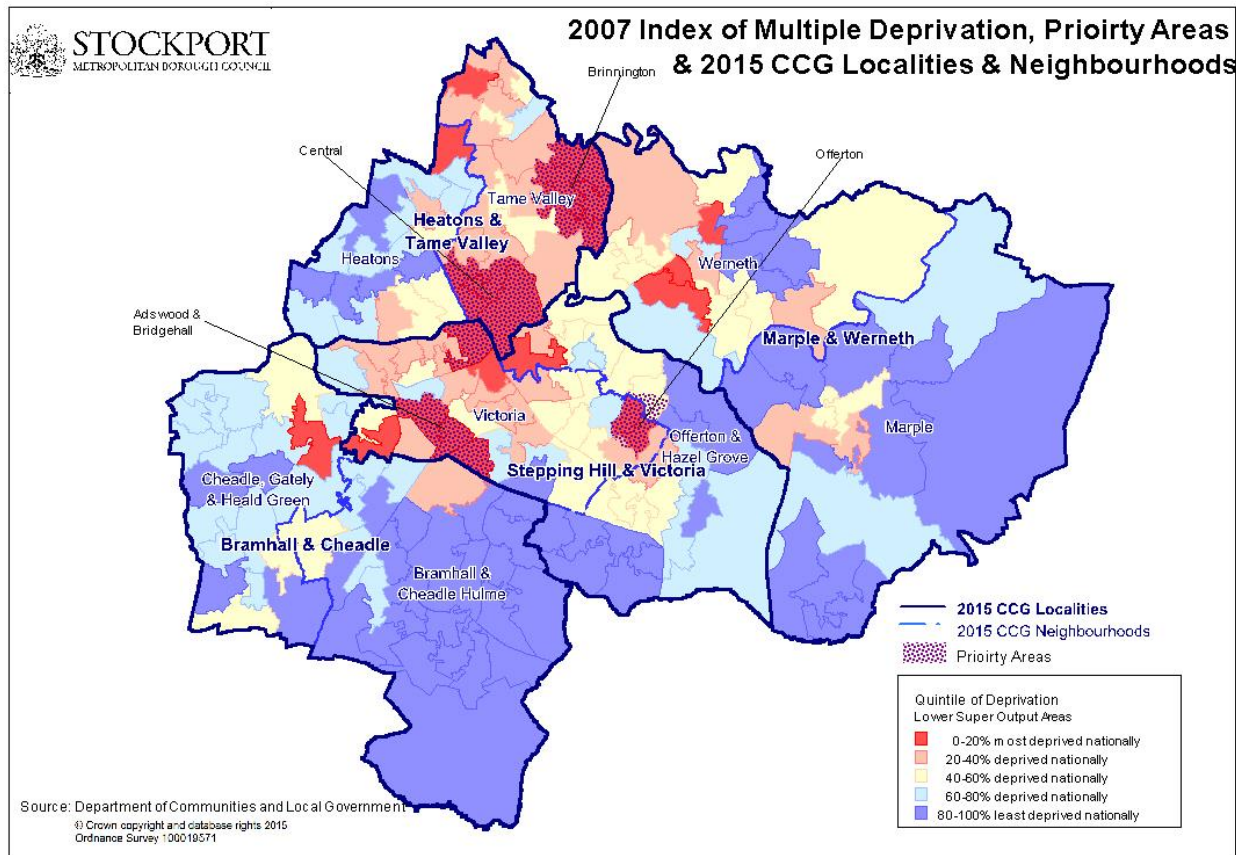
	Neighbourhood	Stockport
Breast cancer (50-70)	68.7%	70.5%
Cervical cancer	79.1%	79.9%
Bowel cancer	47.3%	54.3%

- **Immunisations for registered population:**

	Neighbourhood	Stockport
2 years - Dip	96.7%	96.0%
2 years - Hib	89.9%	91.7%
2 years - MMR1	90.1%	91.3%
2 years - PCV	90.5%	91.9%
5 years - DipB	89.3%	91.5%
5 years - MMR2	90.3%	91.4%
65+ - Influenza	80.0%	80.1%

- Deprivation profile of residents:

	Most deprived quintile	Second most deprived quintile	Mid deprived quintile	Second least deprived quintile	Least deprived quintile
Neighbourhood	23.1%	35.4%	24.9%	13.8%	2.7%
Stockport	12.3%	18.1%	20.0%	21.7%	27.8%



- Average life expectancy of residents:

	Neighbourhood		Stockport	
	At birth	At 65	At birth	At 65
Males	77.5 years	18.0 years	79.9 years	19.4 years
Females	80.4 years	19.0 years	83.0 years	21.1 years

- Lifestyles of adult residents:

	Neighbourhood	Stockport
Smokers	23.2%	16.9%
Unhealthy drinkers	24.3%	26.1%
Low mental wellbeing	16.2%	12.2%
Obesity <i>(underestimate as self reported)</i>	19.7%	16.2%
Not physically active enough	71.1%	73.6%
Eat 5 a day	16.3%	17.9%