



Stockport JSNA

joint strategic needs assessment



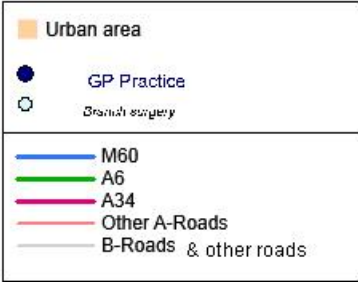
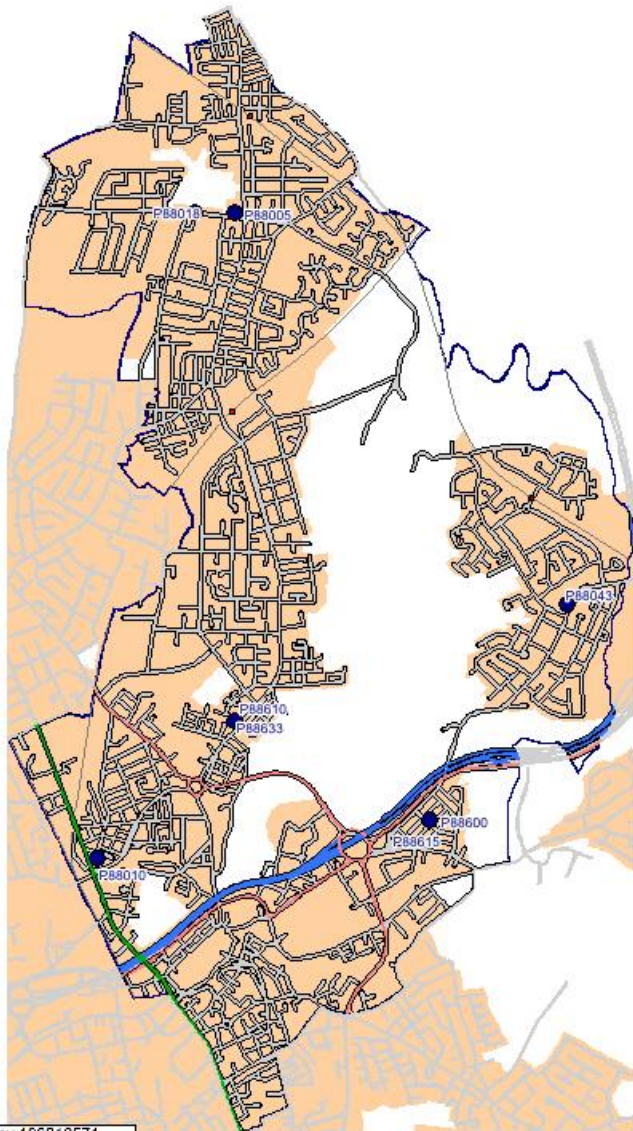
Tame Valley Neighbourhood

Headline Profile

October 2015

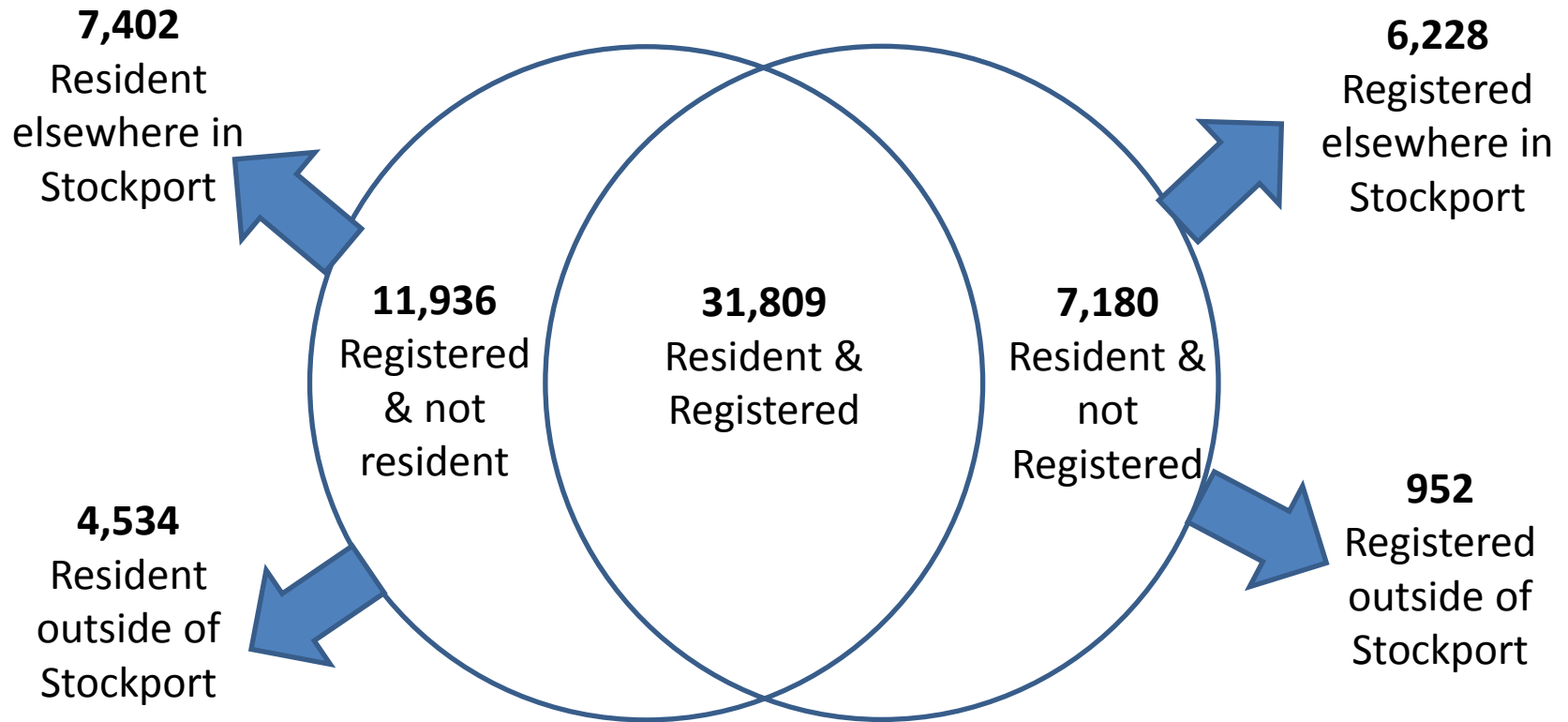


Tame Valley Neighbourhood



1 cm = 0.2018km

- 38,989 residents (HSCIC)
- 43,745 registered with GPs in area (HSCIC)



- 37,025 residents (ONS)
- 43,775 registered (PCIS)

Resident age profile			
Age Group	Number of people	% of people	Stockport %
0 - 4	2,802	7.6%	6.2%
5 - 19	6,489	17.5%	17.4%
20 - 64	22,470	60.7%	57.3%
65 - 84	4,614	12.5%	16.6%
85+	650	1.8%	2.5%
TOTAL	37,025	-	-
65+	5,264	14.2%	19.1%

Registered age profile			
Age Group	Number of people	% of people	Stockport %
0 - 4	2,983	6.8%	5.9%
5 - 19	7,748	17.7%	16.7%
20 - 64	26,317	60.1%	58.7%
65 - 84	5,867	13.4%	16.2%
85+	840	1.9%	2.5%
TOTAL	43,755	-	-
65+	6,707	15.3%	18.6%

- LTC status for registered population:

	0-64	65+	Total
Not on long term condition register	25,656 – 69.3%	1,317 – 19.6%	26,973 – 61.6%
On at least 1 LTC register	11,371 – 30.7%	5,408 – 80.4%	16,779 – 38.4%

- Disease register counts for registered population:

	0-64	65+	Total	% aged 65+	DSR	Stockport DSR
Hypertension	2,621	3,603	6,224	57.9%	16,857.3	14,730.6
CHD	513	1,249	1,762	70.9%	4,936.9	4,180.2
Stroke / TIA	225	591	816	72.4%	2,298.0	2,114.7
Asthma	2,434	560	2,994	18.7%	7,055.0	6,589.2
COPD	548	851	1,399	60.8%	3,837.3	2,366.9
CKD	126	874	1,000	87.4%	2,878.6	2,602.7
Diabetes	1,140	1,217	2,357	51.6%	6,278.7	4,996.7
Epilepsy	333	76	409	18.6%	973.1	790.4
Mental Health (QoF)	331	73	404	18.1%	964.7	807.7
Depression	3,577	475	4,052	11.7%	9,365.3	8,643.0
Anxiety	4,557	1,038	5,595	18.6%	13,275.4	13,275.7
Dementia	14	370	384	96.4%	1,127.9	913.1
Glaucoma	53	230	283	81.3%	801.8	849.4
AMD	4	129	133	97.0%	381.2	481.0
History of fall	1,070	653	1,723	37.9%	4,306.3	3,801.4
Cancer diagnosed since 2003	332	566	898	63.0%	2,450.7	2,705.4

< 20% lower than Stockport average

> 10% higher than Stockport average

- **Cancer screening for registered population:**

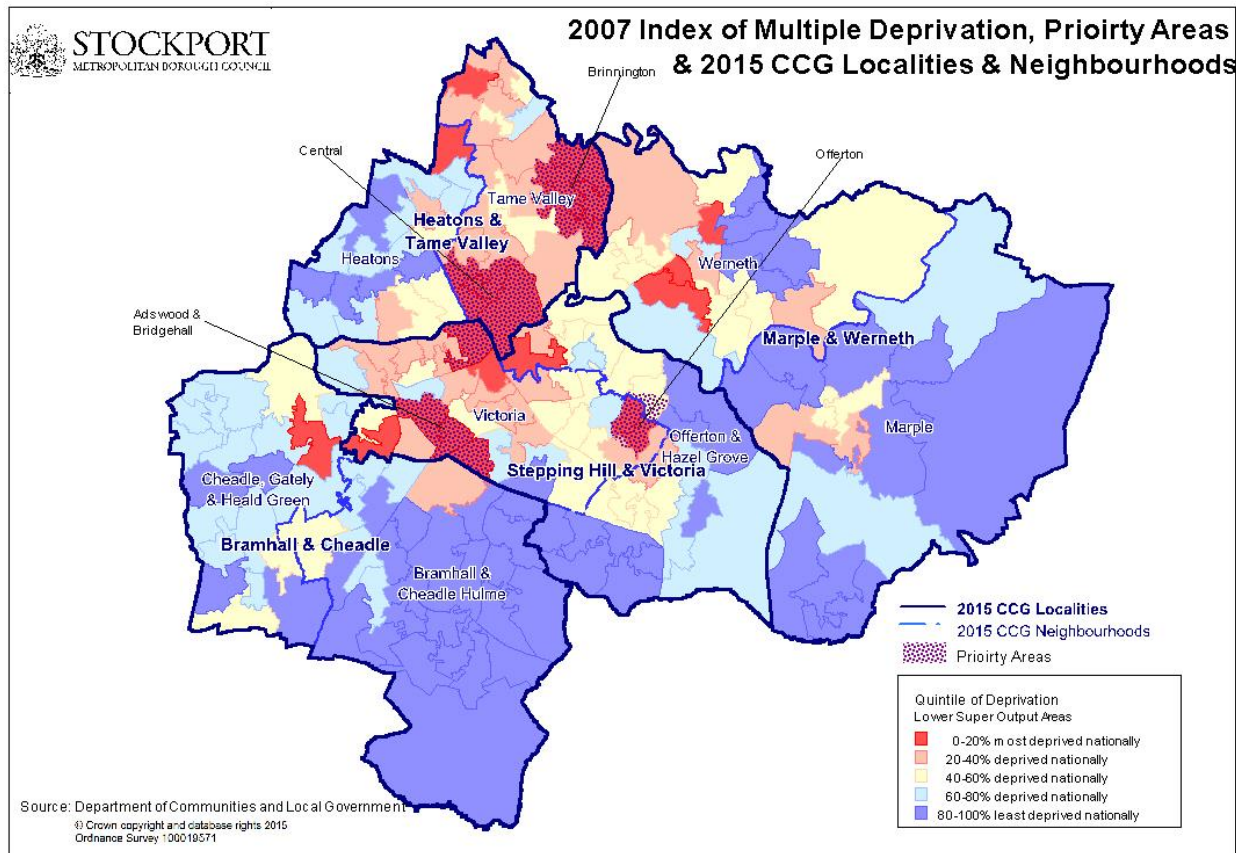
	Neighbourhood	Stockport
Breast cancer (50-70)	65.3%	70.5%
Cervical cancer	77.9%	79.9%
Bowel cancer	44.9%	54.3%

- **Immunisations for registered population:**

	Neighbourhood	Stockport
2 years - Dip	95.7%	96.0%
2 years - Hib	90.7%	91.7%
2 years - MMR1	91.1%	91.3%
2 years - PCV	90.7%	91.9%
5 years - DipB	91.6%	91.5%
5 years - MMR2	91.5%	91.4%
65+ - Influenza	79.8%	80.1%

- Deprivation profile of residents:

	Most deprived quintile	Second most deprived quintile	Mid deprived quintile	Second least deprived quintile	Least deprived quintile
Neighbourhood	36.2%	44.8%	15.5%	3.5%	0.0%
Stockport	12.3%	18.1%	20.0%	21.7%	27.8%



- Average life expectancy of residents:

	Neighbourhood		Stockport	
	At birth	At 65	At birth	At 65
Males	75.9 years	17.5 years	79.9 years	19.4 years
Females	79.9 years	19.6 years	83.0 years	21.1 years

- Lifestyles of adult residents:

	Neighbourhood	Stockport
Smokers	28.8%	16.9%
Unhealthy drinkers	24.2%	26.1%
Low mental wellbeing	15.5%	12.2%
Obesity <i>(underestimate as self reported)</i>	22.1%	16.2%
Not physically active enough	76.3%	73.6%
Eat 5 a day	11.2%	17.9%