



# Stockport

## Introduction

The Public Health Outcomes Framework [Healthy lives, healthy people: Improving outcomes and supporting transparency](#) sets out a vision for public health, desired outcomes and the indicators that will help us understand how well public health is being improved and protected. The framework concentrates on two high-level outcomes to be achieved across the public health system, and groups further indicators into four 'domains' that cover the full spectrum of public health. The outcomes reflect a focus not only on how long people live, but on how well they live at all stages of life.

This profile currently presents data for the first set of indicators at England and upper tier local authority levels, collated by Public Health England.

The profile allows you to:

- Compare your local authority against other authorities in the region
- Benchmark your local authority against the England value

Public Health Outcomes Framework baseline data will be revised and corrected in accordance with the [general DH statistical policy on revisions and corrections](#).

## Contents

### Spine charts

Overarching indicators	Page 2
Wider determinants of health	Page 3
Health improvement	Page 5
Health protection	Page 6
Healthcare and premature mortality	Page 7

### Tartan Rugs

Overarching indicators	Page 9
Wider determinants of health	Page 10
Health improvement	Page 13
Health protection	Page 16
Healthcare and premature mortality	Page 18

### Summary Charts

Overarching indicators	Page 22
Wider determinants of health	Page 23
Health improvement	Page 27
Health protection	Page 31
Healthcare and premature mortality	Page 34

### Inequalities

Inequalities	Page 39
--------------	---------

### Definitions

Definitions	Page 42
-------------	---------



Crown copyright and database rights 2013 Ordnance Survey 100016969  
OpenStreetMap contributors ODbL

[www.phoutcomes.info](http://www.phoutcomes.info)

Produced by Public Health England.

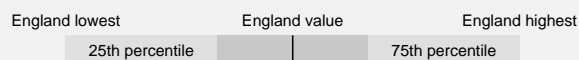
For enquiries please contact [phof.enquiries@phe.gov.uk](mailto:phof.enquiries@phe.gov.uk) or call us on 020 7654 8307.



# Spine Charts

Overarching indicators	Period	Local value	Eng. value	Eng. lowest	Range	Eng. highest
0.1i Healthy life expectancy at birth - Male	2009 - 11	65.5	63.2	55.0		70.3
0.1i Healthy life expectancy at birth - Female	2009 - 11	64.7	64.2	54.1		72.1
0.1ii Life Expectancy at birth - Male	2010 - 12	79.8	79.2	74.0		82.1
0.1ii Life Expectancy at birth - Female	2010 - 12	83.1	83.0	79.5		85.9
0.2i Slope index of inequality in life expectancy at birth based on national deprivation deciles within England (provisional) - Male	2009 - 11	-	9.65	-		-
0.2i Slope index of inequality in life expectancy at birth based on national deprivation deciles within England (provisional) - Female	2009 - 11	-	7.18	-		-
0.2iii Slope index of inequality in life expectancy at birth within English local authorities, based on local deprivation deciles within each area (provisional) - Male	2009 - 11	10.6	-	-		-
0.2iii Slope index of inequality in life expectancy at birth within English local authorities, based on local deprivation deciles within each area (provisional) - Female	2009 - 11	8.3	-	-		-
0.2iv Gap in life expectancy at birth between each local authority and England as a whole - Male	2010 - 12	0.59	0.00	-5.21		2.89
0.2iv Gap in life expectancy at birth between each local authority and England as a whole - Female	2010 - 12	0.09	0.00	-3.51		2.89

## How to interpret the spine charts



- Significantly lower
- Significantly worse
- Significantly higher
- Significantly better
- Not significant
- Significance Not Tested

Wider determinants of health	Period	Local value	Eng. value	Eng. lowest	Range	Eng. highest
1.01i Children in poverty (all dependent children under 20)	2011	15.9	20.1	46.1		6.6
1.01ii Children in poverty (under 16s)	2011	16.4	20.6	43.6		6.9
1.02i School Readiness: The percentage of children achieving a good level of development at the end of reception	2012/13	54.1	51.7	27.7		69.0
1.02i School Readiness: The percentage of children with free school meal status achieving a good level of development at the end of reception	2012/13	33.7	36.2	17.8		60.0
1.02ii School Readiness: The percentage of Year 1 pupils achieving the expected level in the phonics screening check	2012/13	71.1	69.1	58.8		79.0
1.02ii School Readiness: The percentage of Year 1 pupils with free school meal status achieving the expected level in the phonics screening check	2012/13	51.6	55.8	37.2		70.9
1.03 Pupil absence	2011/12	5.00	5.11	6.66		4.30
1.04 First time entrants to the youth justice system	2012	238	537	1,427		151
1.05 16-18 year olds not in education employment or training	2012	6.1	5.8	10.5		2.0
1.06i Adults with a learning disability who live in stable and appropriate accommodation	2011/12	84.8	70.0	30.9		93.8
1.06ii % of adults in contact with secondary mental health services who live in stable and appropriate accommodation	2012/13	64.6	58.5	5.5		94.1
1.08i Gap in the employment rate between those with a long-term health condition and the overall employment rate	2012	5.4	7.1	-5.3		21.7
1.08ii Gap in the employment rate between those with a learning disability and the overall employment rate	2011/12	60.7	63.2	40.2		73.1
1.08iii Gap in the employment rate for those in contact with secondary mental health services and the overall employment rate	2012/13	68.2	62.3	53.1		75.1
1.09i Sickness absence - The percentage of employees who had at least one day off in the previous week	2009 - 11	2.2	2.2	3.5		0.6
1.09ii Sickness absence - The percent of working days lost due to sickness absence	2009 - 11	1.4	1.5	2.7		0.3
1.10 Killed and seriously injured casualties on England's roads	2010 - 12	20.1	40.5	81.8		16.9
1.11 Domestic Abuse	2011/12	23.0	18.2	5.2		34.4
1.12i Violent crime (including sexual violence) - hospital admissions for violence	2010/11 - 12/13	76.7	57.6	167.8		9.3
1.12ii Violent crime (including sexual violence) - violence offences per 1,000 population	2012/13	8.8	10.6	4.1		27.1
1.12iii 1.12iii- Violent crime (including sexual violence) - Rate of sexual offences per 1,000 population	2012/13	0.68	0.83	0.34		2.01
1.13i Re-offending levels - percentage of offenders who re-offend	2011	24.2	26.9	14.4		36.3
1.13ii Re-offending levels - average number of re-offences per offender	2011	0.63	0.78	0.31		1.27
1.14i The percentage of the population affected by noise - Number of complaints about noise	2011/12	3.6	7.5	58.4		2.5
1.14ii The percentage of the population exposed to road, rail and air transport noise of 65dB(A) or more, during the daytime	2006/07	6.0	5.4	0.3		29.8
1.14iii The percentage of the population exposed to road, rail and air transport noise of 55 dB(A) or more during the night-time	2006/07	20.9	12.8	0.8		57.5
1.15i Statutory homelessness - homelessness acceptances	2011/12	0.8	2.3	0.2		9.7
1.15ii Statutory homelessness - households in temporary accommodation	2011/12	0.1	2.3	32.4		0.0
1.16 Utilisation of outdoor space for exercise/health reasons	Mar 2012 - Feb 2013	13.6	15.3	0.5		41.2

## Stockport

Wider determinants of health continued	Period	Local value	Eng. value	Eng. lowest	Range	Eng. highest
1.17 Fuel Poverty	2011	12.3	10.9	18.0		3.8
1.18i Social Isolation: % of adult social care users who have as much social contact as they would like	2012/13	40.2	43.2	31.9		53.5
1.18ii Loneliness and Isolation in adult carers	2012/13	46.7	41.3	23.9		58.5

## How to interpret the spine charts

England lowest      England value      England highest

25th percentile      75th percentile

- Significantly lower
- Significantly higher
- Not significant
- Significantly worse
- Significantly better
- Significance Not Tested

Health improvement	Period	Local value	Eng. value	Eng. lowest	Range	Eng. highest
2.01 Low birth weight of term babies	2011	2.5	2.8	5.3		1.6
2.02i Breastfeeding - Breastfeeding initiation	2012/13	71.5	73.9	40.8		94.7
2.02ii Breastfeeding - Breastfeeding prevalence at 6-8 weeks after birth	2012/13	47.2	47.2	17.5		83.3
2.03 Smoking status at time of delivery	2012/13	12.6	12.7	30.8		2.3
2.04 Under 18 conceptions	2011	28.4	30.7	58.1		9.4
2.04 Under 18 conceptions: conceptions in those aged under 16	2011	4.7	6.1	11.5		2.2
2.06i Excess weight in 4-5 and 10-11 year olds - 4-5 year olds	2012/13	21.7	22.2	32.2		16.1
2.06ii Excess weight in 4-5 and 10-11 year olds - 10-11 year olds	2012/13	31.2	33.3	44.2		24.1
2.07i Hospital admissions caused by unintentional and deliberate injuries in children (aged 0-14 years)	2012/13	127.9	103.8	191.3		61.7
2.07ii Hospital admissions caused by unintentional and deliberate injuries in young people (aged 15-24)	2012/13	157.2	130.7	277.3		63.8
2.08 Emotional well-being of looked after children	2011/12	14.2	13.8	9.5		20.1
2.12 Excess Weight in Adults	2012	65.9	63.8	74.4		45.9
2.13i Percentage of physically active and inactive adults - active adults	2012	57.8	56.0	43.8		68.5
2.13ii Percentage of active and inactive adults - inactive adults	2012	25.9	28.5	40.2		18.2
2.14 Smoking Prevalence	2012	19.5	19.5	29.8		12.1
2.14 Smoking prevalence - routine & manual	2012	37.1	29.7	44.3		14.2
2.15i Successful completion of drug treatment - opiate users	2012	8.7	8.2	3.8		17.6
2.15ii Successful completion of drug treatment - non-opiate users	2012	32.1	40.2	17.4		68.4
2.17 Recorded diabetes	2012/13	5.68 ^	6.01	3.69		8.42
2.20i Cancer screening coverage - breast cancer	2013	73.3	76.3	58.2		84.5
2.20ii Cancer screening coverage - cervical cancer	2013	76.5	73.9	58.6		79.9
2.21vii Access to non-cancer screening programmes - diabetic retinopathy	2011/12	83.1	80.9	66.7		95.0
2.22i Take up of NHS Health Check Programme by those eligible - health check offered	2012/13	18.1	16.5	0.7		42.5
2.22ii Take up of NHS Health Check programme by those eligible - health check take up	2012/13	72.7	49.1	7.7		100.0
2.23i Self-reported well-being - people with a low satisfaction score	2012/13	3.9	5.8	10.1		3.4
2.23ii Self-reported well-being - people with a low worthwhile score	2012/13	4.1	4.4	8.2		2.9
2.23iii Self-reported well-being - people with a low happiness score	2012/13	8.4	10.4	15.8		5.5
2.23iv Self-reported well-being - people with a high anxiety score	2012/13	17.6	21.0	29.0		10.9
2.24i Injuries due to falls in people aged 65 and over (Persons)	2011/12	2100	1665	2,985		1,070
2.24i Injuries due to falls in people aged 65 and over (males/females) - Male	2011/12	1738	1302	2,535		704
2.24i Injuries due to falls in people aged 65 and over (males/females) - Female	2011/12	2462	2028	3,713		1,298
2.24ii Injuries due to falls in people aged 65 and over - aged 65-79	2011/12	1200	941	1,726		545
2.24iii Injuries due to falls in people aged 65 and over - aged 80+	2011/12	6151	4924	8,965		2,892

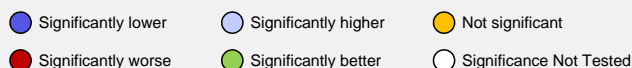
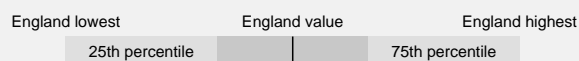
^: there is a note associated with this value - see end of document for details

## Stockport

Health protection	Period	Local value	Eng. value	Eng. lowest	Range	Eng. highest
3.01 Fraction of mortality attributable to particulate air pollution	2011	5.2	5.4	3.0		8.3
3.02i Chlamydia diagnoses (15-24 year olds) - Old NCSP data	2011	2132	2125	783		5,995
3.02ii Chlamydia diagnoses (15-24 year olds) - CTAD - Female	2012	2500	2568	987		7,314
3.02ii Chlamydia diagnoses (15-24 year olds) - CTAD	2012	1755	1979	703		6,132
3.02ii Chlamydia diagnoses (15-24 year olds) - CTAD - Male	2012	1017	1368	383		4,364
3.03i Population vaccination coverage - Hepatitis B (1 year old)	2012/13	66.7 ^	-	-		-
3.03i Population vaccination coverage - Hepatitis B (2 years old)	2012/13	75.0 ^	-	-		-
3.03iii Population vaccination coverage - Dtap / IPV / Hib (1 year old)	2012/13	96.8 ^	94.7	79.0		99.0
3.03iii Population vaccination coverage - Dtap / IPV / Hib (2 years old)	2012/13	97.3 ^	96.3	81.9		99.4
3.03iv Population vaccination coverage - MenC	2012/13	96.3 ^	93.9	75.9		98.8
3.03v Population vaccination coverage - PCV	2012/13	96.4 ^	94.4	78.7		99.0
3.03vi Population vaccination coverage - Hib / MenC booster (2 years old)	2012/13	94.6 ^	92.7	77.0		98.3
3.03vi Population vaccination coverage - Hib / Men C booster (5 years)	2012/13	89.5 ^	91.5	75.7		98.1
3.03vii Population vaccination coverage - PCV booster	2012/13	93.9 ^	92.5	75.1		97.5
3.03viii Population vaccination coverage - MMR for one dose (2 years old)	2012/13	94.1 ^	92.3	77.4		98.4
3.03ix Population vaccination coverage - MMR for one dose (5 years old)	2012/13	96.5 ^	93.9	82.1		98.3
3.03x Population vaccination coverage - MMR for two doses (5 years old)	2012/13	91.1 ^	87.7	68.9		97.0
3.03xii Population vaccination coverage - HPV	2012/13	93.3 ^	86.1	62.1		96.2
3.03xiii Population vaccination coverage - PPV	2012/13	73.4 ^	69.1	55.3		77.0
3.03xiv Population vaccination coverage - Flu (aged 65+)	2012/13	80.8 ^	73.4	65.5		80.8
3.03xv Population vaccination coverage - Flu (at risk individuals)	2012/13	68.8 ^	51.3	44.2		68.8
3.04 People presenting with HIV at a late stage of infection	2010 - 12	46.7	48.3	0.0		80.0
3.05i Treatment completion for TB	2012	- x	82.8	22.6		100.0
3.05ii Incidence of TB	2010 - 12	6.4	15.1	0.0		112.3
3.06 Public sector organisations with a board approved sustainable development management plan	2011/12	60.0	84.1	20		100

^, x: there is a note associated with this value - see end of document for details

## How to interpret the spine charts



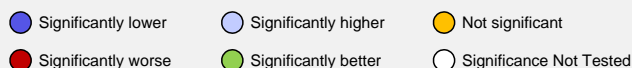
Healthcare and premature mortality	Period	Local value	Eng. value	Eng. lowest	Range	Eng. highest
4.01 Infant mortality	2009 - 11	4.01	4.29	8.02		2.28
4.02 Tooth decay in children aged 5	2011/12	0.63	0.94	2.10		0.35
4.03 Mortality rate from causes considered preventable	2010 - 12	193.0	187.8	340.5		136.2
4.03 Mortality rate from causes considered preventable - Male	2010 - 12	235.6	238.4	430.9		164.9
4.03 Mortality rate from causes considered preventable - Female	2010 - 12	152.7	140.6	253.9		94.7
4.04i Under 75 mortality rate from all cardiovascular diseases	2010 - 12	77.2	81.1	144.7		55.7
4.04i Under 75 mortality rate from all cardiovascular diseases - Male	2010 - 12	105.7	114.0	204.4		79.3
4.04i Under 75 mortality rate from all cardiovascular diseases - Female	2010 - 12	50.2	50.1	88.4		28.6
4.04ii Under 75 mortality rate from cardiovascular diseases considered preventable	2010 - 12	50.3	53.5	95.2		29.3
4.04ii Under 75 mortality rate from cardiovascular diseases considered preventable - Male	2010 - 12	74.0	80.8	142.5		44.5
4.04ii Under 75 mortality rate from cardiovascular diseases considered preventable - Female	2010 - 12	27.8	27.6	54.4		15.0
4.05i Under 75 mortality rate from cancer	2010 - 12	152.4	146.5	207.3		113.5
4.05i Under 75 mortality rate from cancer - Male	2010 - 12	168.0	163.6	238.9		122.8
4.05i Under 75 mortality rate from cancer - Female	2010 - 12	138.6	130.8	181.3		105.3
4.05ii Under 75 mortality rate from cancer considered preventable	2010 - 12	90.1	84.9	134.9		53.8
4.05ii Under 75 mortality rate from cancer considered preventable - Male	2010 - 12	96.9	92.7	154.4		53.1
4.05ii Under 75 mortality rate from cancer considered preventable - Female	2010 - 12	84.2	77.9	121.4		54.6
4.06i Under 75 mortality rate from liver disease	2010 - 12	24.2	18.0	41.6		10.3
4.06i Under 75 mortality rate from liver disease - Male	2010 - 12	34.2	23.7	58.4		13.0
4.06i Under 75 mortality rate from liver disease - Female	2010 - 12	14.6	12.6	25.0		6.9
4.06ii Under 75 mortality rate from liver disease considered preventable	2010 - 12	21.7	15.8	38.2		9.0
4.06ii Under 75 mortality rate from liver disease considered preventable - Male	2010 - 12	31.0	21.1	54.9		10.8
4.06ii Under 75 mortality rate from liver disease considered preventable - Female	2010 - 12	12.7	10.6	21.4		6.3
4.07i Under 75 mortality rate from respiratory disease	2010 - 12	27.6	33.5	81.6		20.5
4.07i Under 75 mortality rate from respiratory disease - Male	2010 - 12	27.2	39.6	92.1		24.6
4.07i Under 75 mortality rate from respiratory disease - Female	2010 - 12	27.9	27.9	71.5		12.6
4.07ii Under 75 mortality rate from respiratory disease considered preventable	2010 - 12	15.0	17.6	45.0		7.9
4.07ii Under 75 mortality rate from respiratory disease considered preventable - Male	2010 - 12	14.8	20.1	50.4		10.6
4.07ii Under 75 mortality rate from respiratory disease considered preventable - Female	2010 - 12	15.2	15.2	40.2		7.3
4.08 Mortality from communicable diseases	2010 - 12	54.4	64.8	97.9		47.0
4.08 Mortality from communicable diseases - Male	2010 - 12	62.4	75.1	118.9		55.2
4.08 Mortality from communicable diseases - Female	2010 - 12	50.1	58.7	89.8		37.3
4.10 Suicide rate	2010 - 12	7.6	8.5	14.5		4.8
4.10 Suicide rate - Male	2010 - 12	12.3	13.3	22.6		7.5
4.10 Suicide rate - Female	2010 - 12	- x	4.0	8		2
4.11 Emergency readmissions within 30 days of discharge from hospital	2010/11	12.8	11.8	13.8		8.1
4.11 Emergency readmissions within 30 days of discharge from hospital - Male	2010/11	13.9	12.1	14.8		8.6

## Stockport

Healthcare and premature mortality continued	Period	Local value	Eng. value	Eng. lowest	Range	Eng. highest
4.11 Emergency readmissions within 30 days of discharge from hospital - Female	2010/11	11.9	11.4	13.2		7.2
4.12i Preventable sight loss - age related macular degeneration (AMD)	2011/12	46.7	110.5	12.8		225.2
4.12ii Preventable sight loss - glaucoma	2011/12	6.7	12.8	3.0		34.5
4.12iii Preventable sight loss - diabetic eye disease	2011/12	-	3.8	0.9		15.8
4.12iv Preventable sight loss - sight loss certifications	2011/12	19.1	44.5	5.1		82.5
4.14i Hip fractures in people aged 65 and over	2011/12	441.8	457.2	599.5		337.9
4.14ii Hip fractures in people aged 65 and over - aged 65-79	2011/12	227.7	222.2	346.7		135.7
4.14iii Hip fractures in people aged 65 and over - aged 80+	2011/12	1405	1515	2,021		993
4.15i Excess Winter Deaths Index (Single year, all ages)	Aug 2011 - Jul 2012	15.1	16.1	30.7		2.1
4.15ii Excess Winter Deaths Index (single year, ages 85+)	Aug 2011 - Jul 2012	26.4	22.9	53.1		-7.6
4.15iii Excess Winter Deaths Index (3 years, all ages)	Aug 2009 - Jul 2012	13.5	16.5	27.4		6.4
4.15iv Excess Winter Deaths Index (3 years, ages 85+)	Aug 2009 - Jul 2012	18.0	22.6	38.5		11.3

x: there is a note associated with this value - see end of document for details

## How to interpret the spine charts





# Tartan Rugs

## Overarching indicators

Indicator	Period	England	Blackburn with Darwen	Blackpool	Bolton	Bury	Cheshire East	Cheshire West and Chester	Cumbria	Halton	Knowsley	Lancashire	Liverpool	Manchester	Oldham	Rochdale	Salford	Sefton	St. Helens	<b>Stockport</b>	Tameside	Trafford	Warrington	Wigan	Wirral
0.1i Healthy life expectancy at birth - Male	2009 - 11	63.2	56.7	55.1	61.7	61.2	65.6	63.8	61.8	59.2	55.5	62.8	58.2	55.0	60.3	59.7	56.7	62.8	61.0	65.5	57.5	64.8	60.7	59.6	61.5
0.1i Healthy life expectancy at birth - Female	2009 - 11	64.2	59.5	57.1	62.4	62.8	66.8	64.9	64.3	61.1	57.7	63.3	58.3	55.4	60.3	58.1	57.8	63.2	61.6	64.7	56.8	63.8	61.4	59.4	62.8
0.1ii Life Expectancy at birth - Male	2010 - 12	79.2	76.5	74.0	77.4	78.0	80.4	79.2	78.8	77.1	76.6	78.2	76.1	74.8	77.1	76.8	76.1	77.5	78.0	79.8	76.3	79.6	78.2	77.4	77.9
0.1ii Life Expectancy at birth - Female	2010 - 12	83.0	80.9	80.0	81.4	81.0	83.4	82.8	82.4	80.6	80.7	82.0	80.2	79.5	81.1	80.8	80.5	82.8	81.6	83.1	80.6	83.7	82.0	80.8	81.9
0.2i Slope index of inequality in life expectancy at birth based on national deprivation deciles within England (provisional) - Male	2009 - 11	9.65	-	-	-	-	-	-	-	-	-	-	-	-	-	-	-	-	-	-	-	-	-	-	-
0.2i Slope index of inequality in life expectancy at birth based on national deprivation deciles within England (provisional) - Female	2009 - 11	7.18	-	-	-	-	-	-	-	-	-	-	-	-	-	-	-	-	-	-	-	-	-	-	-
0.2iii Slope index of inequality in life expectancy at birth within English local authorities, based on local deprivation deciles within each area (provisional) - Male	2009 - 11	-	11.8	11.4	12.1	10.8	9.8	9.6	8.7	9.2	11.0	10.1	9.8	10.5	10.9	9.0	11.3	12.5	10.9	10.6	11.4	9.4	9.3	9.4	13.0
0.2iii Slope index of inequality in life expectancy at birth within English local authorities, based on local deprivation deciles within each area (provisional) - Female	2009 - 11	-	6.5	7.0	9.2	8.3	7.2	8.5	6.7	13.3	7.6	7.9	9.3	7.4	9.4	7.1	7.9	10.4	8.7	8.3	8.7	6.3	7.1	8.1	10.4
0.2iv Gap in life expectancy at birth between each local authority and England as a whole - Male	2010 - 12	0.00	-2.71	-5.21	-1.81	-1.21	1.19	-0.01	-0.41	-2.11	-2.61	-1.01	-3.11	-4.41	-2.11	-2.41	-3.11	-1.71	-1.21	0.59	-2.91	0.39	-1.01	-1.81	-1.31
0.2iv Gap in life expectancy at birth between each local authority and England as a whole - Female	2010 - 12	0.00	-2.11	-3.01	-1.61	-2.01	0.39	-0.21	-0.61	-2.41	-2.31	-1.01	-2.81	-3.51	-1.91	-2.21	-2.51	-0.21	-1.41	0.09	-2.41	0.69	-1.01	-2.21	-1.11

Comparison with respect to England value:

Lower Similar Higher

Better Similar Worse

Not compared

## Stockport

## Wider determinants of health

Indicator	Period	England	Blackburn with Darwen	Blackpool	Bolton	Bury	Cheshire East	Cheshire West and Chester	Cumbria	Halton	Knowsley	Lancashire	Liverpool	Manchester	Oldham	Rochdale	Salford	Sefton	St. Helens	<b>Stockport</b>	Tameside	Trafford	Warrington	Wigan	Wirral
1.01i Children in poverty (all dependent children under 20)	2011	20.1	26.0	30.2	22.7	17.5	12.0	15.7	14.9	25.9	31.2	17.8	32.5	36.6	26.9	26.6	27.6	20.2	24.6	15.9	23.1	14.7	14.5	19.8	23.8
1.01ii Children in poverty (under 16s)	2011	20.6	25.3	31.3	22.9	17.9	12.5	16.3	15.4	26.7	31.8	18.2	33.0	36.4	26.8	26.7	28.3	20.9	25.6	16.4	23.7	15.0	15.1	20.5	24.6
1.02i School Readiness: The percentage of children achieving a good level of development at the end of reception	2012/13	51.7	39.8	51.7	47.6	51.2	56.3	52.4	49.7	37.0	55.4	58.9	50.5	46.6	41.1	42.1	52.8	51.1	57.1	54.1	41.8	61.2	45.2	37.7	47.2
1.02i School Readiness: The percentage of children with free school meal status achieving a good level of development at the end of reception	2012/13	36.2	31.9	40.4	32.4	31.7	35.5	31.0	30.0	24.1	44.4	39.6	36.6	39.3	27.4	28.5	41.4	31.9	42.5	33.7	28.2	39.5	17.8	19.4	27.7
1.02ii School Readiness: The percentage of Year 1 pupils achieving the expected level in the phonics screening check	2012/13	69.1	66.7	63.4	68.0	65.7	73.8	66.6	69.3	63.0	64.7	70.9	58.8	68.1	65.0	73.4	69.1	66.6	75.1	71.1	65.4	76.1	71.8	72.4	67.8
1.02ii School Readiness: The percentage of Year 1 pupils with free school meal status achieving the expected level in the phonics screening check	2012/13	55.8	51.6	52.9	54.2	53.6	55.2	47.0	58.5	51.6	54.5	56.1	48.5	59.8	53.7	62.8	59.2	50.6	62.8	51.6	52.3	58.5	52.5	57.2	58.3
1.03 Pupil absence	2011/12	5.11	4.88	5.92	4.90	4.42	4.71	5.10	5.30	4.86	5.85	4.62	5.94	5.38	4.99	4.90	5.14	5.32	5.03	5.00	4.67	4.39	4.94	4.85	5.14
1.04 First time entrants to the youth justice system	2012	537	724	859	490	362	462	487	432	594	607	701	728	740	492	331	521	551	413	238	501	386	380	421	528
1.05 16-18 year olds not in education employment or training	2012	5.8	7.5	8.1	5.3	6.8	5.6	4.5	5.3	8.9	8.2	5.5	9.3	7.0	5.6	6.6	6.2	6.7	7.8	6.1	6.6	4.3	5.7	6.7	7.5
1.06i Adults with a learning disability who live in stable and appropriate accommodation	2011/12	70.0	68.5	63.8	81.6	85.7	52.4	79.7	79.9	77.2	90.6	72.2	86.3	89.1	93.6	80.1	91.7	82.5	-	84.8	93.8	75.3	88.0	78.8	33.2
1.06ii % of adults in contact with secondary mental health services who live in stable and appropriate accommodation	2012/13	58.5	6.7	8.5	87.9	50.9	64.7	65.0	58.6	50.9	64.0	5.5	49.2	59.6	54.0	66.0	78.2	44.9	59.9	64.6	76.6	76.7	64.5	62.1	78.4
1.08i Gap in the employment rate between those with a long-term health condition and the overall employment rate	2012	7.1	10.3	8.8	10.1	10.0	5.9	4.9	10.7	7.5	11.8	8.7	12.5	10.6	9.0	11.6	13.6	11.8	13.3	5.4	11.3	6.4	4.9	7.5	7.6
1.08ii Gap in the employment rate between those with a learning disability and the overall employment rate	2011/12	63.2	58.3	62.9	65.7	63.9	67.5	64.4	69.2	59.9	60.6	67.2	50.6	56.4	58.0	59.2	59.8	66.7	60.5	60.7	56.6	62.4	69.8	66.3	66.1

## Wider determinants of health continued

Wider determinants of health continued																										
Indicator	Period	England	Blackburn with Darwen	Blackpool	Bolton	Bury	Cheshire East	Cheshire West and Chester	Cumbria	Halton	Knowsley	Lancashire	Liverpool	Manchester	Oldham	Rochdale	Salford	Sefton	St. Helens	Stockport	Tameside	Trafford	Warrington	Wigan	Wirral	
1.08iii	Gap in the employment rate for those in contact with secondary mental health services and the overall employment rate	2012/13	62.3	62.7	65.1	55.7	75.1	60.1	62.5	64.2	59.6	57.9	69.4	57.3	57.4	62.3	59.5	59.5	67.0	62.9	68.2	63.3	59.2	65.0	60.1	63.9
1.09i	Sickness absence - The percentage of employees who had at least one day off in the previous week	2009 - 11	2.2	1.8	2.4	2.2	2.5	2.5	1.9	2.6	2.0	2.5	2.1	3.1	2.3	2.4	2.3	2.3	1.7	1.8	2.2	1.9	1.9	1.7	3.2	2.1
1.09ii	Sickness absence - The percent of working days lost due to sickness absence	2009 - 11	1.5	1.4	2.1	1.7	1.9	1.8	1.3	2.2	1.6	1.5	1.5	2.1	2.1	2.0	1.9	1.7	1.0	1.2	1.4	1.6	1.4	1.1	2.4	1.6
1.10	Killed and seriously injured casualties on England's roads	2010 - 12	40.5	44.9	44.8	29.0	27.5	65.8	63.4	45.2	32.1	36.6	54.1	47.7	35.5	30.2	22.8	29.9	30.4	35.7	20.1	24.6	21.4	52.8	22.8	34.7
1.11	Domestic Abuse	2011/12	18.2	25.7	25.7	23.0	23.0	5.2	5.2	15.9	5.2	29.7	25.7	29.7	23.0	23.0	23.0	23.0	29.7	29.7	23.0	23.0	5.2	23.0	29.7	
1.12i	Violent crime (including sexual violence) - hospital admissions for violence	2010/11 - 12/13	57.6	102.3	142.9	52.4	64.0	58.7	52.5	52.3	124.0	142.2	66.9	167.8	105.1	119.6	118.8	103.7	92.3	145.6	76.7	82.8	48.2	99.3	94.5	113.0
1.12ii	Violent crime (including sexual violence) - violence offences per 1,000 population	2012/13	10.6	12.9	27.1	11.1	10.2	9.7	10.1	8.9	12.8	6.4	10.9	10.6	14.6	12.3	12.1	10.4	6.7	6.2	8.8	11.7	6.1	11.3	7.9	6.9
1.12iii	1.12iii- Violent crime (including sexual violence) - Rate of sexual offences per 1,000 population	2012/13	0.83	1.10	1.96	0.74	0.86	0.60	0.61	0.63	0.71	0.56	0.85	0.84	1.52	0.80	1.20	0.73	0.63	0.56	0.68	0.70	0.55	0.82	0.57	0.78
1.13i	Re-offending levels - percentage of offenders who re-offend	2011	26.9	30.5	33.1	30.3	28.3	26.8	26.3	28.8	24.6	27.9	29.3	31.3	29.8	28.4	28.9	27.1	29.6	27.4	24.2	27.8	25.3	26.2	26.5	30.6
1.13ii	Re-offending levels - average number of re-offences per offender	2011	0.78	1.02	1.02	0.91	0.79	0.73	0.76	0.83	0.67	0.69	0.88	0.96	0.91	0.77	0.87	0.76	0.77	0.82	0.63	0.87	0.64	0.72	0.81	1.02
1.14i	The percentage of the population affected by noise - Number of complaints about noise	2011/12	7.5	4.2	9.1	4.2	4.8	3.9	5.1	3.6	7.7	3.4	5.0	5.7	3.4	3.2	4.9	3.9	4.2	4.1	3.6	5.3	3.6	4.9	2.5	3.0
1.14ii	The percentage of the population exposed to road, rail and air transport noise of 65dB(A) or more, during the daytime	2006/07	5.4	2.1	4.1	7.9	9.5	2.2	3.8	1.1	7.0	3.7	3.5	5.8	6.9	6.9	8.6	12.7	3.6	5.2	6.0	5.6	6.2	7.5	8.5	3.7
1.14iii	The percentage of the population exposed to road, rail and air transport noise of 55 dB(A) or more during the night-time	2006/07	12.8	12.5	6.8	26.5	34.4	8.6	10.8	4.7	22.0	21.3	15.1	14.0	20.8	21.8	27.7	42.8	9.0	19.4	20.9	21.6	27.7	40.9	24.9	12.6

## Stockport

## Wider determinants of health continued

Indicator	Period	England	Blackburn with Darwen	Blackpool	Bolton	Bury	Cheshire East	Cheshire West and Chester	Cumbria	Halton	Knowsley	Lancashire	Liverpool	Manchester	Oldham	Rochdale	Salford	Sefton	St. Helens	Stockport	Tameside	Trafford	Warrington	Wigan	Wirral
1.15i Statutory homelessness - homelessness acceptances	2011/12	2.3	0.5	0.5	2.5	2.2	0.7	0.7	1.9	1.3	0.8	1.0	1.4	2.9	0.7	2.4	2.9	0.4	2.4	0.8	1.0	1.7	1.7	2.1	0.7
1.15ii Statutory homelessness - households in temporary accommodation	2011/12	2.3	0.1	0.3	0.5	0.2	0.1	0.3	0.3	0.2	0.2	0.3	0.2	2.0	0.3	0.5	0.6	0.1	0.2	0.1	0.3	0.4	0.3	0.2	0.1
1.16 Utilisation of outdoor space for exercise/health reasons	Mar 2012 - Feb 2013	15.3	11.6	9.1 \$	10.1	14.4	18.9	23.6 \$	16.1	16.2	10.7	14.2	18.8	14.8	4.5 \$	- x	9.3 \$	13.0	17.7	13.6	15.3 \$	16.3 \$	16.0	9.6 \$	23.8 \$
1.17 Fuel Poverty	2011	10.9	13.4	18.0	11.4	12.4	11.6	11.1	12.5	9.6	9.9	13.1	14.1	13.3	11.3	11.5	11.1	14.4	11.3	12.3	11.9	13.1	10.1	11.3	13.5
1.18i Social Isolation: % of adult social care users who have as much social contact as they would like	2012/13	43.2	52.8	53.5	39.7	45.3	45.0	42.3	49.3	49.6	44.9	46.3	48.8	43.3	41.1	41.9 \$	37.5	50.7	42.4	40.2	42.9 \$	45.2	43.3	42.1	43.5 \$
1.18ii Loneliness and Isolation in adult carers	2012/13	41.3	45.9 \$	37.7	45.0	46.5	49.9	46.7 \$	39.6	42.7	43.5	38.3	27.4	42.9	36.7	47.9	40.0	40.1	51.1	46.7	44.3	41.6	45.9	38.8	45.9

Comparison with respect to England value: Lower Similar Higher Better Similar Worse Not compared

x, \$: there is a note associated with this value - see end of document for details

## Health improvement

Indicator	Period	England	Blackburn with Darwen	Blackpool	Bolton	Bury	Cheshire East	Cheshire West and Chester	Cumbria	Halton	Knowsley	Lancashire	Liverpool	Manchester	Oldham	Rochdale	Salford	Sefton	St. Helens	Stockport	Tameside	Trafford	Warrington	Wigan	Wirral
2.01 Low birth weight of term babies	2011	2.8	4.3	2.8	4.0	2.3	2.5	2.1	2.3	3.4	2.5	2.7	3.2	3.5	4.6	3.4	3.1	2.2	2.5	2.5	3.1	2.4	2.0	2.9	2.2
2.02i Breastfeeding - Breastfeeding initiation	2012/13	73.9	69.9	51.4	63.1	68.9	67.8	68.2	65.4	52.3	40.8	- x	50.9	65.1	64.7	62.1	58.3	54.0	52.3	71.5	59.7	73.9	60.7	56.6	56.7
2.02ii Breastfeeding - Breastfeeding prevalence at 6-8 weeks after birth	2012/13	47.2	34.1	26.6	36.2	41.0	39.3	39.3	- x	22.1	17.5	- x	29.1	- x	34.6	45.8	36.4	27.5	22.1	47.2	34.0	51.0	34.2	28.1	31.0
2.03 Smoking status at time of delivery	2012/13	12.7	17.2	30.8	17.1	15.3	15.1	12.2	15.6	18.9	23.8	18.8	18.3	13.8	16.5	19.2	16.2	15.6	18.9	12.6	20.9	8.4	10.9	16.8	12.0
2.04 Under 18 conceptions	2011	30.7	28.7	58.1	39.6	32.9	23.3	25.8	27.0	41.5	36.4	35.6	39.6	52.5	36.5	31.7	41.9	30.3	45.4	28.4	45.2	24.2	32.0	34.7	34.6
2.04 Under 18 conceptions: conceptions in those aged under 16	2011	6.1	2.2	9.9	8.0	5.6	3.9	5.3	5.2	8.7	6.8	7.5	9.7	10.6	7.8	5.5	8.5	5.3	11.5	4.7	10.2	3.6	7.1	7.0	6.3
2.06i Excess weight in 4-5 and 10-11 year olds - 4-5 year olds	2012/13	22.2	21.9	26.0	20.0	19.5	20.7	23.9	22.9	25.1	26.1	23.5	28.6	25.7	23.8	21.8	23.0	23.4	24.6	21.7	23.2	19.0	21.8	21.6	22.2
2.06ii Excess weight in 4-5 and 10-11 year olds - 10-11 year olds	2012/13	33.3	31.6	35.4	35.6	33.2	29.5	31.6	36.6	36.5	38.7	32.4	39.1	39.4	34.2	33.7	36.0	35.2	36.1	31.2	33.2	33.0	31.5	31.8	33.3
2.07i Hospital admissions caused by unintentional and deliberate injuries in children (aged 0-14 years)	2012/13	103.8	157.1	147.2	137.1	134.9	122.5	128.2	119.0	130.6	148.7	138.8	107.0	170.9	164.2	147.4	163.9	100.9	134.0	127.9	148.9	91.1	134.3	120.3	106.9
2.07ii Hospital admissions caused by unintentional and deliberate injuries in young people (aged 15-24)	2012/13	130.7	167.0	277.3	118.9	131.1	138.2	119.7	155.3	211.1	199.9	146.4	145.0	106.8	153.9	167.8	161.9	150.3	233.9	157.2	178.4	125.8	233.2	195.0	194.2
2.08 Emotional well-being of looked after children	2011/12	13.8	13.5	13.8	12.9	13.4	13.9	13.6	13.3	12.8	13.8	13.1	12.4	12.8	13.2	11.5	13.1	-	11.7	14.2	12.3	12.8	13.7	12.0	11.9
2.12 Excess Weight in Adults	2012	63.8	67.9	72.1	60.1	68.2	61.2	68.5	68.3	70.2	67.3	64.7	67.2	62.7	69.6	68.6	63.3	68.7	67.5	65.9	69.2	59.7	70.0	65.3	66.4
2.13i Percentage of physically active and inactive adults - active adults	2012	56.0	48.0	48.2	53.4	52.3	62.6	55.7	55.3	49.8	52.2	54.0	52.0	51.6	47.0	51.9	45.4	53.0	57.7	57.8	49.6	57.5	57.6	48.3	56.4
2.13ii Percentage of active and inactive adults - inactive adults	2012	28.5	36.9	34.9	30.8	27.9	25.5	26.4	29.9	31.3	32.8	30.4	31.6	40.2	36.3	34.1	39.1	31.2	30.5	25.9	32.8	24.7	26.2	33.2	28.8
2.14 Smoking Prevalence	2012	19.5	25.8	29.5	22.9	20.9	16.3	15.0	20.9	22.6	23.6	20.6	24.5	24.6	24.5	23.9	26.3	19.7	23.1	19.5	25.0	20.8	17.8	21.8	18.4
2.14 Smoking prevalence - routine & manual	2012	29.7	36.0	44.3	35.2	29.4	25.5	23.7	29.5	28.1	31.4	32.5	32.5	33.6	36.3	33.9	34.5	30.6	34.7	37.1	34.9	28.9	30.2	30.2	24.0
2.15i Successful completion of drug treatment - opiate users	2012	8.2	6.7	7.5	5.7	8.6	5.5	10.5	5.2	5.9	7.0	7.9	8.0	6.6	9.6	8.8	8.6	7.4	5.4	8.7	9.2	8.8	12.5	6.8	8.6

x: there is a note associated with this value - see end of document for details

## Stockport

## Health improvement continued

Indicator	Period	England	Blackburn with Darwen	Blackpool	Bolton	Bury	Cheshire East	Cheshire West and Chester	Cumbria	Halton	Knowsley	Lancashire	Liverpool	Manchester	Oldham	Rochdale	Salford	Sefton	St. Helens	Stockport	Tameside	Trafford	Warrington	Wigan	Wirral
2.15ii Successful completion of drug treatment - non-opiate users	2012	40.2	46.7	58.7	28.8	39.4	25.0	42.2	27.9	33.9	51.9	40.1	55.1	37.5	58.3	36.4	39.8	66.3	50.0	32.1	53.5	43.5	28.3	50.3	48.9
2.17 Recorded diabetes	2012/13	6.01	7.10 ^	6.90 ^	7.51 ^	6.12 ^	5.91 ^	5.95 ^	6.10 ^	7.20 ^	6.90 ^	6.20 ^	5.80 ^	5.80 ^	6.82 ^	6.88 ^	5.87 ^	6.24 ^	6.91 ^	5.68 ^	6.82 ^	5.86 ^	6.10 ^	6.79 ^	6.54 ^
2.20i Cancer screening coverage - breast cancer	2013	76.3	66.6	68.5	74.3	77.3	78.9	79.6	81.2	74.6	70.5	74.2	70.9	63.2	72.0	72.3	68.7	75.6	76.2	73.3	74.7	75.0	78.6	74.4	77.2
2.20ii Cancer screening coverage - cervical cancer	2013	73.9	68.0	69.8	72.9	75.4	75.9	75.9	77.6	71.6	72.9	73.6	68.2	67.0	73.1	73.3	70.1	70.8	75.1	76.5	73.9	73.9	75.6	75.8	72.6
2.21vi Access to non-cancer screening programmes - diabetic retinopathy	2011/12	80.9	81.9	74.0	81.6	88.4	79.5	76.9	72.2	80.1	77.9	79.5	86.3	74.5	79.8	80.3	75.2	86.6	80.1	83.1	81.5	78.4	77.5	86.5	83.9
2.22i Take up of NHS Health Check Programme by those eligible - health check offered	2012/13	16.5	19.5	19.3	5.1	15.1	16.3	12.3	14.7	17.9	22.0	15.9	42.5	22.9	15.1	19.7	23.0	21.3	17.9	18.1	18.0	24.5	7.9	18.3	25.5
2.22ii Take up of NHS Health Check programme by those eligible - health check take up	2012/13	49.1	48.5	39.5	47.3	60.5	50.8	47.6	46.7	37.2	28.5	66.8	35.6	37.2	54.7	64.6	38.2	52.8	37.2	72.7	52.8	36.7	46.3	64.3	57.8
2.23i Self-reported well-being - people with a low satisfaction score	2012/13	5.8	7.8	7.2	8.3	5.0	- x	- x	4.0	6.7	10.1	6.1	8.4	7.9	6.3	9.5	6.3	7.2	7.8	3.9	8.0	5.6	5.1	5.9	6.3
2.23ii Self-reported well-being - people with a low worthwhile score	2012/13	4.4	5.8	6.0	6.8	5.0 ^	- x	- x	4.6	5.5	7.3	4.8	6.0	5.7	4.8	6.3	5.1	4.0	5.9	4.1	6.0	5.0 ^	5.8	5.0 ^	5.9
2.23iii Self-reported well-being - people with a low happiness score	2012/13	10.4	12.5	12.8	13.5	10.7	5.5	8.8	9.7	14.3	15.8	9.6	15.2	12.0	11.8	12.2	13.3	12.4	14.6	8.4	14.1	10.6	10.5	11.1	13.4
2.23iv Self-reported well-being - people with a high anxiety score	2012/13	21.0	21.3	21.3	20.1	25.0	14.2	20.9	22.6	25.2	26.5	20.4	29.0	22.2	22.1	21.6	22.8	22.6	22.4	17.6	23.6	20.5	22.3	17.6	25.7
2.24i Injuries due to falls in people aged 65 and over (Persons)	2011/12	1665	1891	1677	1082	1786	1783	1813	1364	2962	2571	1591	2756	2341	2072	2155	2575	1719	2749	2100	1718	1801	2985	2088	2198
2.24i Injuries due to falls in people aged 65 and over (males/females) - Male	2011/12	1302	1553	1199	704	1437	1434	1444	1045	2211	2206	1196	2497	2142	1530	1637	2191	1381	2092	1738	1334	1412	2317	1804	1689
2.24i Injuries due to falls in people aged 65 and over (males/females) - Female	2011/12	2028	2230	2155	1460	2134	2133	2182	1682	3713	2936	1987	3015	2540	2614	2673	2960	2057	3406	2462	2101	2190	3653	2371	2707
2.24ii Injuries due to falls in people aged 65 and over - aged 65-79	2011/12	941	1110	1018	680	994	974	966	831	1629	1410	951	1726	1620	1257	1244	1556	997	1402	1200	1067	1052	1656	1195	1405

^, x: there is a note associated with this value - see end of document for details

## Health improvement continued

Health improvement continued

Indicator	Period	England	Blackburn with Darwen	Blackpool	Bolton	Bury	Cheshire East	Cheshire West and Chester	Cumbria	Halton	Knowsley	Lancashire	Liverpool	Manchester	Oldham	Rochdale	Salford	Sefton	St. Helens	Stockport	Tameside	Trafford	Warrington	Wigan	Wirral
2.24iii Injuries due to falls in people aged 65 and over - aged 80+	2011/12	4924	5406	4644	2892	5349	5422	5623	3763	8959	7796	4470	7393	5585	5736	6252	7161	4968	8808	6151	4647	5172	8965	6106	5765
Comparison with respect to England value:		Lower	Similar	Higher	Better	Similar	Worse	Not compared																	

## Stockport

## Health protection

Indicator	Period	England	Blackburn with Darwen	Blackpool	Bolton	Bury	Cheshire East	Cheshire West and Chester	Cumbria	Halton	Knowsley	Lancashire	Liverpool	Manchester	Oldham	Rochdale	Salford	Sefton	St. Helens	<b>Stockport</b>	Tameside	Trafford	Warrington	Wigan	Wirral
3.01 Fraction of mortality attributable to particulate air pollution	2011	5.4	4.5	3.6	5.0	5.2	4.5	4.2	3.0	4.9	4.9	4.1	4.7	5.4	5.3	5.2	5.5	4.1	4.9	<b>5.2</b>	5.4	5.1	4.9	4.8	4.0
3.02i Chlamydia diagnoses (15-24 year olds) - Old NCSP data	2011	2125	1421	4147	2834	2382	1988	1838	2129	2837	2247	2244	2264	2253	2210	2679	3024	1880	2633	<b>2132</b>	2999	2234	2771	2465	2505
3.02ii Chlamydia diagnoses (15-24 year olds) - CTAD - Female	2012	2568	3116	5671	3542	2828	2449	2702	2320	3695	3206	2809	2776	2756	2598	2858	3483	2512	3121	<b>2500</b>	3311	2650	4411	3533	3098
3.02ii Chlamydia diagnoses (15-24 year olds) - CTAD	2012	1979	2342	5096	2552	2105	1776	2045	1702	2778	2545	2226	2242	2087	1956	2175	2642	1973	2340	<b>1755</b>	2474	1926	3592	2664	2472
3.02ii Chlamydia diagnoses (15-24 year olds) - CTAD - Male	2012	1368	1582	4364	1565	1379	1121	1353	1114	1850	1771	1623	1627	1401	1267	1474	1794	1365	1526	<b>1017</b>	1608	1259	2775	1796	1804
3.03i Population vaccination coverage - Hepatitis B (1 year old)	2012/13	-	- ^	- *	- *	- x	100 ^	100 ^	- *	100 ^	- *	- *	92.9 ^	93.8 ^	92.5 ^	- x	100 ^	- ^	100 ^	<b>66.7 ^</b>	44.4 ^	80.0 ^	- x	- *	100 ^
3.03i Population vaccination coverage - Hepatitis B (2 years old)	2012/13	-	- *	- ^	50.0 ^	- x	- *	- *	- ^	- ^	- *	91.7 ^	100 ^	83.8 ^	40.7 ^	- x	100 ^	40.0 ^	- ^	<b>75.0 ^</b>	21.6 ^	57.1 ^	- x	- *	- x
3.03iii Population vaccination coverage - Dtap / IPV / Hib (1 year old)	2012/13	94.7	94.3 ^	95.6 ^	96.5 ^	95.6 ^	96.7 ^	96.6 ^	97.2 ^	93.5 ^	95.4 ^	93.9 ^	96.3 ^	95.7 ^	97.6 ^	96.8 ^	98.4 ^	96.0 ^	93.5 ^	<b>96.8 ^</b>	95.7 ^	97.0 ^	96.9 ^	97.0 ^	96.0 ^
3.03iii Population vaccination coverage - Dtap / IPV / Hib (2 years old)	2012/13	96.3	96.2 ^	97.4 ^	98.0 ^	96.8 ^	97.4 ^	97.3 ^	98.2 ^	95.5 ^	97.0 ^	97.1 ^	98.1 ^	96.3 ^	97.9 ^	98.1 ^	99.0 ^	98.1 ^	95.5 ^	<b>97.3 ^</b>	96.9 ^	97.9 ^	98.2 ^	97.8 ^	97.7 ^
3.03iv Population vaccination coverage - MenC	2012/13	93.9	94.2 ^	95.2 ^	95.8 ^	94.5 ^	97.5 ^	97.3 ^	96.5 ^	93.8 ^	97.2 ^	93.7 ^	95.9 ^	94.5 ^	97.1 ^	96.8 ^	96.1 ^	95.5 ^	93.8 ^	<b>96.3 ^</b>	95.6 ^	96.3 ^	96.1 ^	97.0 ^	95.8 ^
3.03v Population vaccination coverage - PCV	2012/13	94.4	94.1 ^	95.4 ^	96.7 ^	94.8 ^	97.8 ^	97.4 ^	97.3 ^	94.1 ^	97.2 ^	93.5 ^	96.4 ^	95.1 ^	97.3 ^	96.0 ^	96.5 ^	96.1 ^	94.1 ^	<b>96.4 ^</b>	95.7 ^	96.5 ^	96.8 ^	97.3 ^	95.5 ^
3.03vi Population vaccination coverage - Hib / MenC booster (2 years old)	2012/13	92.7	94.5 ^	92.8 ^	95.3 ^	92.5 ^	96.3 ^	96.6 ^	96.3 ^	96.4 ^	97.8 ^	94.1 ^	95.9 ^	91.3 ^	95.6 ^	95.1 ^	98.3 ^	95.1 ^	96.4 ^	<b>94.6 ^</b>	92.6 ^	95.2 ^	95.8 ^	94.9 ^	95.1 ^
3.03vi Population vaccination coverage - Hib / Men C booster (5 years)	2012/13	91.5	94.8 ^	91.3 ^	84.8 ^	92.1 ^	91.3 ^	90.4 ^	91.5 ^	92.3 ^	93.3 ^	94.2 ^	88.6 ^	87.7 ^	92.9 ^	92.2 ^	96.3 ^	90.5 ^	92.3 ^	<b>89.5 ^</b>	94.2 ^	85.4 ^	95.1 ^	96.0 ^	92.1 ^
3.03vi i Population vaccination coverage - PCV booster	2012/13	92.5	94.4 ^	92.4 ^	95.3 ^	92.6 ^	94.7 ^	94.7 ^	96.2 ^	94.6 ^	95.9 ^	94.3 ^	96.2 ^	92.4 ^	95.9 ^	95.2 ^	97.5 ^	95.7 ^	94.6 ^	<b>93.9 ^</b>	94.0 ^	94.8 ^	95.8 ^	95.6 ^	93.9 ^
3.03vi ii Population vaccination coverage - MMR for one dose (2 years old)	2012/13	92.3	94.3 ^	92.3 ^	95.1 ^	95.3 ^	94.7 ^	95.1 ^	96.1 ^	94.4 ^	95.9 ^	93.8 ^	96.0 ^	92.7 ^	97.0 ^	96.8 ^	98.4 ^	95.8 ^	94.4 ^	<b>94.1 ^</b>	94.3 ^	94.9 ^	94.9 ^	94.9 ^	95.0 ^

\*, ^, x: there is a note associated with this value - see end of document for details



## Health protection continued

Indicator	Period	England	Blackburn with Darwen	Blackpool	Bolton	Bury	Cheshire East	Cheshire West and Chester	Cumbria	Halton	Knowsley	Lancashire	Liverpool	Manchester	Oldham	Rochdale	Salford	Sefton	St. Helens	Stockport	Tameside	Trafford	Warrington	Wigan	Wirral
3.03ix Population vaccination coverage - MMR for one dose (5 years old)	2012/13	93.9	96.8 ^	94.7 ^	96.0 ^	95.8 ^	95.7 ^	94.3 ^	96.7 ^	96.6 ^	96.0 ^	95.8 ^	97.3 ^	93.9 ^	96.5 ^	95.3 ^	98.3 ^	96.5 ^	96.6 ^	96.5 ^	96.2 ^	95.1 ^	94.5 ^	95.7 ^	97.4 ^
3.03x Population vaccination coverage - MMR for two doses (5 years old)	2012/13	87.7	90.8 ^	84.9 ^	91.6 ^	91.5 ^	90.5 ^	90.2 ^	91.7 ^	91.6 ^	91.5 ^	89.1 ^	91.5 ^	87.2 ^	95.2 ^	92.4 ^	97.0 ^	89.9 ^	91.6 ^	91.1 ^	90.8 ^	89.3 ^	88.7 ^	91.0 ^	91.6 ^
3.03xi Population vaccination coverage - HPV	2012/13	86.1	90.6 ^	87.2 ^	93.1 ^	78.3 ^	93.7 ^	91.8 ^	92.1 ^	90.8 ^	94.5 ^	91.4 ^	87.8 ^	83.6 ^	91.8 ^	88.9 ^	82.0 ^	93.1 ^	90.8 ^	93.3 ^	92.5 ^	91.9 ^	91.8 ^	84.1 ^	92.5 ^
3.03xii Population vaccination coverage - PPV	2012/13	69.1	70.0 ^	68.0 ^	71.1 ^	65.0 ^	72.9 ^	73.1 ^	66.4 ^	73.1 ^	77.0 ^	70.8 ^	69.4 ^	67.7 ^	67.2 ^	66.5 ^	67.4 ^	69.6 ^	73.1 ^	73.4 ^	69.4 ^	71.8 ^	68.2 ^	65.7 ^	70.7 ^
3.03xv Population vaccination coverage - Flu (aged 65+)	2012/13	73.4	76.3 ^	73.4 ^	73.3 ^	72.4 ^	77.5 ^	75.5 ^	76.1 ^	76.7 ^	78.2 ^	75.8 ^	77.4 ^	72.0 ^	74.2 ^	77.0 ^	77.1 ^	75.8 ^	76.7 ^	80.8 ^	76.2 ^	78.1 ^	72.4 ^	73.1 ^	75.4 ^
3.03xv Population vaccination coverage - Flu (at risk individuals)	2012/13	51.3	56.6 ^	52.2 ^	55.0 ^	47.8 ^	56.6 ^	54.4 ^	60.2 ^	55.2 ^	58.1 ^	53.0 ^	56.6 ^	53.5 ^	56.8 ^	60.0 ^	55.2 ^	52.6 ^	55.2 ^	68.8 ^	58.0 ^	52.8 ^	44.7 ^	51.9 ^	54.3 ^
3.04 People presenting with HIV at a late stage of infection	2010 - 12	48.3	50.0	36.4	47.1	70.8	42.1	55.6	51.5	45.5	69.2	47.7	70.7	54.2	43.8	71.4	50.5	61.1	47.1	46.7	68.0	46.0	44.4	55.3	59.4
3.05i Treatment completion for TB	2012	82.8	88.1	25.8	81.7	- x	- x	- x	- x	- x	- x	63.1	76.2	85.1	84.8	88.1	91.7	- x	- x	- x	63.6	85.2	- x	- x	- x
3.05ii Incidence of TB	2010 - 12	15.1	38.6	14.8	21.0	10.3	2.4	2.4	3.5	0.0	2.1	9.6	10.9	39.8	22.2	18.4	12.0	4.0	2.3	6.4	15.5	13.2	4.5	3.1	3.8
3.06 Public sector organisations with a board approved sustainable development management plan	2011/12	84.1	20.0	80.0	40.0	80.0	85.7	66.7	83.3	66.7	55.6	60.0	80.0	77.8	80.0	80.0	40.0	71.4	57.1	60.0	83.3	75.0	66.7	66.7	71.4

Comparison with respect to England value:

Lower

Similar

Higher

Better

Similar

Worse

Not compared

^, x: there is a note associated with this value - see end of document for details

## Stockport

## Healthcare and premature mortality

Indicator	Period	England	Blackburn with Darwen	Blackpool	Bolton	Bury	Cheshire East	Cheshire West and Chester	Cumbria	Halton	Knowsley	Lancashire	Liverpool	Manchester	Oldham	Rochdale	Salford	Sefton	St. Helens	Stockport	Tameside	Trafford	Warrington	Wigan	Wirral
4.01 Infant mortality	2009 - 11	4.29	7.48	5.73	4.81	3.85	3.27	3.93	2.90	4.57	2.99	4.90	4.81	5.26	6.86	3.84	5.19	4.82	2.53	4.01	4.53	2.80	4.89	3.22	4.90
4.02 Tooth decay in children aged 5	2011/12	0.94	1.58	1.81	1.85	1.28	0.58	0.68	1.16	1.09	1.58	1.30	1.42	1.78	2.10	1.55	1.96	0.90	1.10	0.63	1.08	0.86	1.05	1.15	1.21
4.03 Mortality rate from causes considered preventable	2010 - 12	187.8	253.5	303.6	227.9	220.1	163.0	188.1	196.9	260.8	264.3	214.1	292.7	340.5	243.8	258.0	283.8	222.3	225.7	193.0	278.2	200.9	201.6	238.4	218.9
4.03 Mortality rate from causes considered preventable - Male	2010 - 12	238.4	318.0	401.6	293.8	270.5	201.5	231.8	245.1	319.1	324.7	266.8	370.7	430.9	298.4	315.9	350.6	292.9	283.1	235.6	350.9	252.2	257.7	297.5	277.9
4.03 Mortality rate from causes considered preventable - Female	2010 - 12	140.6	194.0	208.1	164.3	172.4	126.7	147.5	150.5	207.3	209.9	164.4	220.5	253.9	192.1	201.4	217.2	159.5	170.7	152.7	210.1	155.2	148.4	182.1	166.6
4.04i Under 75 mortality rate from all cardiovascular diseases	2010 - 12	81.1	121.5	135.3	107.8	102.2	69.3	74.8	83.4	112.2	106.1	93.0	114.9	144.7	102.0	110.6	122.5	87.0	90.0	77.2	118.5	87.4	95.0	107.6	87.9
4.04i Under 75 mortality rate from all cardiovascular diseases - Male	2010 - 12	114.0	160.1	193.8	147.6	141.9	92.9	103.5	111.8	141.7	146.4	126.2	163.1	204.4	141.2	151.8	168.6	124.3	125.4	105.7	162.2	124.6	140.4	143.6	119.3
4.04i Under 75 mortality rate from all cardiovascular diseases - Female	2010 - 12	50.1	83.3	78.1	69.6	64.9	46.7	47.4	55.6	84.5	70.2	61.3	69.5	88.4	65.9	71.5	77.0	54.5	56.5	50.2	76.6	52.8	51.9	72.1	59.5
4.04ii Under 75 mortality rate from cardiovascular diseases considered preventable	2010 - 12	53.5	84.0	91.5	71.1	65.5	44.7	50.8	55.7	82.5	70.8	62.2	72.0	95.2	69.9	74.3	86.8	55.3	58.3	50.3	86.0	55.2	65.6	73.5	55.1
4.04ii Under 75 mortality rate from cardiovascular diseases considered preventable - Male	2010 - 12	80.8	116.6	136.4	106.0	101.9	66.3	77.3	79.1	112.3	106.5	91.4	109.7	142.5	102.5	108.4	124.8	86.8	84.8	74.0	124.6	84.3	102.9	105.2	82.3
4.04ii Under 75 mortality rate from cardiovascular diseases considered preventable - Female	2010 - 12	27.6	51.7	47.4	37.6	31.4	24.0	25.5	32.7	54.4	38.8	34.2	36.5	50.6	39.6	41.7	49.3	27.7	33.4	27.8	48.8	28.1	30.4	42.3	30.4
4.05i Under 75 mortality rate from cancer	2010 - 12	146.5	148.4	183.8	148.1	162.2	130.9	151.2	147.9	190.2	189.8	156.6	203.4	207.3	179.1	177.2	182.3	160.9	152.0	152.4	177.2	138.8	145.7	168.4	157.4
4.05i Under 75 mortality rate from cancer - Male	2010 - 12	163.6	151.4	224.4	164.2	184.5	140.5	166.5	163.5	217.9	199.8	173.7	238.9	236.9	202.9	194.7	207.7	189.2	171.7	168.0	206.7	157.8	161.5	180.6	174.1
4.05i Under 75 mortality rate from cancer - Female	2010 - 12	130.8	146.1	144.4	133.1	142.0	121.9	137.1	132.8	164.7	180.4	140.5	170.9	181.3	157.3	160.5	159.2	136.6	133.5	138.6	150.0	121.8	131.1	156.7	142.3
4.05ii Under 75 mortality rate from cancer considered preventable	2010 - 12	84.9	95.7	109.6	87.5	92.8	74.3	86.0	84.7	119.3	114.2	93.4	128.6	134.9	109.5	107.8	118.2	98.2	92.0	90.1	112.2	89.4	82.9	99.4	100.2

## Healthcare and premature mortality continued

Indicator	Period	England	Blackburn with Darwen	Blackpool	Bolton	Bury	Cheshire East	Cheshire West and Chester	Cumbria	Halton	Knowsley	Lancashire	Liverpool	Manchester	Oldham	Rochdale	Salford	Sefton	St. Helens	Stockport	Tameside	Trafford	Warrington	Wigan	Wirral
4.05ii Under 75 mortality rate from cancer considered preventable - Male	2010 - 12	92.7	98.1	131.4	98.4	98.0	79.5	88.9	91.1	134.6	123.0	100.3	151.7	154.4	119.5	114.9	131.2	115.4	104.1	96.9	125.4	97.7	90.6	106.2	110.3
4.05ii Under 75 mortality rate from cancer considered preventable - Female	2010 - 12	77.9	93.6	88.7	77.3	88.5	69.5	83.4	78.6	105.0	106.1	87.1	107.4	117.8	100.4	100.7	106.8	83.3	80.5	84.2	100.2	82.1	75.8	92.9	91.2
4.06i Under 75 mortality rate from liver disease	2010 - 12	18.0	31.3	41.6	22.3	23.5	16.5	20.5	17.1	28.3	27.4	22.3	33.9	39.5	24.1	31.0	25.9	29.6	29.5	24.2	27.5	20.5	22.8	30.9	27.4
4.06i Under 75 mortality rate from liver disease - Male	2010 - 12	23.7	42.8	58.4	31.3	28.3	21.4	27.9	22.3	34.6	32.0	28.9	43.3	54.9	30.7	41.7	32.6	42.6	34.4	34.2	35.0	28.3	27.1	38.7	37.4
4.06i Under 75 mortality rate from liver disease - Female	2010 - 12	12.6	19.7	24.6	13.3	18.9	11.8	13.4	12.0	22.2	23.2	15.9	25.0	24.4	17.8	20.8	19.0	17.7	24.7	14.6	20.2	13.0	18.6	23.1	18.2
4.06ii Under 75 mortality rate from liver disease considered preventable	2010 - 12	15.8	22.1	38.2	18.9	18.9	15.3	17.5	14.4	22.8	19.9	19.1	30.4	35.9	21.0	26.2	23.5	26.5	24.7	21.7	24.5	18.2	21.0	24.3	23.7
4.06ii Under 75 mortality rate from liver disease considered preventable - Male	2010 - 12	21.1	29.6	54.9	26.4	23.1	20.6	24.1	18.9	27.7	22.3	24.9	39.9	51.2	27.4	34.5	29.8	38.3	29.8	31.0	31.2	24.4	25.5	30.2	32.3
4.06ii Under 75 mortality rate from liver disease considered preventable - Female	2010 - 12	10.6	- x	21.3	11.5	14.7	10.3	11.2	9.9	18.3	17.8	13.5	21.4	20.9	15.0	18.4	17.3	15.6	19.8	12.7	17.9	12.2	16.6	18.4	15.8
4.07i Under 75 mortality rate from respiratory disease	2010 - 12	33.5	52.9	81.6	44.0	42.1	28.3	34.7	33.1	50.1	60.2	40.8	60.5	75.6	52.1	49.9	64.9	39.1	47.1	27.6	43.3	32.5	38.3	47.7	43.4
4.07i Under 75 mortality rate from respiratory disease - Male	2010 - 12	39.6	58.7	92.1	53.0	46.6	33.6	36.7	36.0	55.6	67.2	47.0	63.7	85.3	60.1	57.9	78.5	44.1	56.4	27.2	47.3	34.6	43.1	52.7	51.4
4.07i Under 75 mortality rate from respiratory disease - Female	2010 - 12	27.9	47.1	71.5	35.5	37.8	23.2	32.7	30.3	45.3	54.3	35.0	57.4	66.6	44.6	42.4	51.9	34.6	38.7	27.9	39.6	30.6	33.7	42.8	36.1
4.07ii Under 75 mortality rate from respiratory disease considered preventable	2010 - 12	17.6	29.6	37.9	23.6	22.8	13.6	18.1	16.8	27.1	38.6	21.6	37.1	45.0	29.5	27.2	35.7	20.4	24.0	15.0	26.7	15.4	18.0	22.5	24.3
4.07ii Under 75 mortality rate from respiratory disease considered preventable - Male	2010 - 12	20.1	31.6	37.6	27.2	23.2	15.1	18.7	17.9	29.6	41.2	22.6	33.7	50.4	31.5	30.7	39.4	22.5	30.3	14.8	27.1	17.2	18.3	24.5	26.4
4.07ii Under 75 mortality rate from respiratory disease considered preventable - Female	2010 - 12	15.2	27.6	38.1	20.0	22.4	12.2	17.4	15.7	25.1	36.3	20.6	40.2	39.9	27.7	24.0	32.2	18.4	18.2	15.2	26.4	13.9	17.7	20.5	22.3

x: there is a note associated with this value - see end of document for details

## Stockport

## Healthcare and premature mortality continued

Indicator	Period	England	Blackburn with Darwen	Blackpool	Bolton	Bury	Cheshire East	Cheshire West and Chester	Cumbria	Halton	Knowsley	Lancashire	Liverpool	Manchester	Oldham	Rochdale	Salford	Sefton	St. Helens	<b>Stockport</b>	Tameside	Trafford	Warrington	Wigan	Wirral
4.08 Mortality from communicable diseases	2010 - 12	64.8	70.5	96.9	81.8	67.2	62.1	65.7	59.7	75.7	77.8	76.6	85.1	90.6	70.2	61.3	86.6	59.0	86.1	54.4	74.0	67.1	75.6	92.1	66.6
4.08 Mortality from communicable diseases - Male	2010 - 12	75.1	84.5	118.9	89.7	72.4	75.2	73.4	67.9	82.4	87.5	90.5	101.9	102.0	78.3	69.7	118.1	73.2	99.3	62.4	76.7	81.7	99.1	95.8	80.5
4.08 Mortality from communicable diseases - Female	2010 - 12	58.7	61.8	81.2	75.4	61.5	55.3	61.0	54.8	71.2	72.0	67.9	75.9	82.4	65.9	55.8	68.3	50.9	79.1	50.1	69.9	59.8	63.3	89.8	58.1
4.10 Suicide rate	2010 - 12	8.5	13.6	12.7	11.7	8.8	7.3	8.6	10.3	7.8	10.4	9.9	7.9	14.5	8.1	10.1	9.5	9.4	9.9	7.6	10.7	9.4	6.8	11.6	7.2
4.10 Suicide rate - Male	2010 - 12	13.3	22.6	21.3	17.7	13.3	10.9	14.6	17.0	- x	17.7	15.3	13.6	21.6	14.0	14.7	15.8	15.1	18.2	12.3	16.6	14.7	10.7	19.8	12.7
4.10 Suicide rate - Female	2010 - 12	4.0	- x	- x	- x	- x	- x	- x	4.0	- x	- x	5.0	- x	7.3	- x	- x	- x	- x	- x	- x	- x	- x	- x	- x	- x
4.11 Emergency readmissions within 30 days of discharge from hospital	2010/11	11.8	13.8	13.3	11.6	12.0	12.7	12.1	10.5	12.8	13.4	12.2	13.4	12.9	12.8	12.5	12.2	12.2	12.5	12.8	12.3	11.4	12.7	12.9	13.0
4.11 Emergency readmissions within 30 days of discharge from hospital - Male	2010/11	12.1	14.8	14.0	12.6	12.1	12.9	12.6	10.8	13.4	13.6	12.8	14.8	13.9	13.6	12.7	13.3	13.6	13.1	13.9	13.1	11.9	13.1	13.3	13.8
4.11 Emergency readmissions within 30 days of discharge from hospital - Female	2010/11	11.4	12.9	12.7	10.6	11.8	12.4	11.6	10.1	12.2	13.1	11.5	12.2	12.0	12.0	12.2	11.3	11.0	12.0	11.9	11.6	11.0	12.4	12.5	12.4
4.12i Preventable sight loss - age related macular degeneration (AMD)	2011/12	110.5	114.9	131.6	126.0	130.8	109.6	71.4	139.0	107.3	108.3	105.2	123.3	16.8	84.5	90.2	99.0	120.3	120.0	46.7	20.3	35.6	98.4	73.0	179.1
4.12ii Preventable sight loss - glaucoma	2011/12	12.8	-	13.1	15.7	15.0	12.1	9.0	15.0	14.4	9.5	12.9	10.1	-	10.5	10.0	6.7	11.1	31.3	6.7	5.5	5.3	7.8	6.8	26.6
4.12iii Preventable sight loss - diabetic eye disease	2011/12	3.8	4.1	8.9	2.6	-	1.9	-	6.4	-	6.4	2.8	5.4	-	4.3	4.5	-	3.3	6.6	-	-	-	-	3.7	3.3
4.12iv Preventable sight loss - sight loss certifications	2011/12	44.5	50.1	59.1	51.2	43.7	43.4	33.7	65.6	44.5	50.7	46.2	45.5	5.4	37.3	35.4	31.6	54.8	66.1	19.1	10.0	10.1	41.4	38.4	75.0
4.14i Hip fractures in people aged 65 and over	2011/12	457.2	472.3	421.2	474.5	439.1	440.5	487.9	453.7	599.5	462.7	473.7	535.9	533.3	397.9	449.3	488.6	443.7	557.7	441.8	518.9	418.2	519.2	499.3	437.4
4.14ii Hip fractures in people aged 65 and over - aged 65-79	2011/12	222.2	218.0	239.5	260.3	207.2	176.3	245.9	224.3	293.0	222.1	250.1	323.6	327.7	209.1	196.2	246.3	232.2	232.5	227.7	272.5	211.7	275.8	234.3	231.2

x: there is a note associated with this value - see end of document for details

## Healthcare and premature mortality continued

Indicator	Period	England	Blackburn with Darwen	Blackpool	Bolton	Bury	Cheshire East	Cheshire West and Chester	Cumbria	Halton	Knowsley	Lancashire	Liverpool	Manchester	Oldham	Rochdale	Salford	Sefton	St. Helens	<b>Stockport</b>	Tameside	Trafford	Warrington	Wigan	Wirral
4.14iii Hip fractures in people aged 65 and over - aged 80+	2011/12	1515	1616	1239	1439	1483	1629	1577	1486	1979	1545	1480	1491	1458	1248	1588	1579	1395	2021	1405	1628	1347	1615	1692	1365
4.15i Excess Winter Deaths Index (Single year, all ages)	Aug 2011 - Jul 2012	16.1	23.8	15.3	19.2	7.0	20.6	23.1	11.0	15.7	7.7	15.4	12.6	16.8	20.5	19.0	10.5	11.0	12.7	15.1	11.8	23.0	12.9	14.3	13.8
4.15ii Excess Winter Deaths Index (single year, ages 85+)	Aug 2011 - Jul 2012	22.9	28.5	24.3	22.7	-6.6	29.5	28.9	9.8	12.8	7.4	23.2	23.9	24.6	21.0	38.0	22.2	13.3	22.4	26.4	24.3	24.3	13.9	48.3	15.3
4.15iii Excess Winter Deaths Index (3 years, all ages)	Aug 2009 - Jul 2012	16.5	17.7	19.7	16.3	16.3	20.5	20.2	11.5	9.5	14.3	14.5	16.8	16.2	13.7	19.1	6.4	17.5	17.9	13.5	12.4	22.4	13.5	17.1	18.0
4.15iv Excess Winter Deaths Index (3 years, ages 85+)	Aug 2009 - Jul 2012	22.6	25.8	29.7	18.6	14.3	29.8	21.9	14.9	17.3	18.0	19.8	25.2	26.3	15.9	30.2	20.2	22.5	24.9	18.0	25.2	25.0	12.2	32.5	21.8

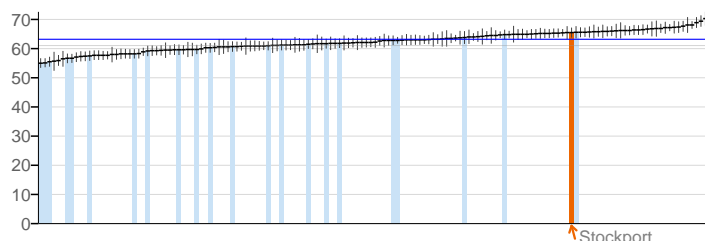
Comparison with respect to England value:

Lower
Similar
Higher
Better
Similar
Worse
Not compared

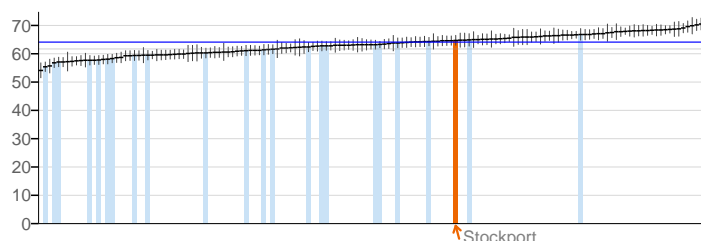
# Summary Charts

## Overarching indicators

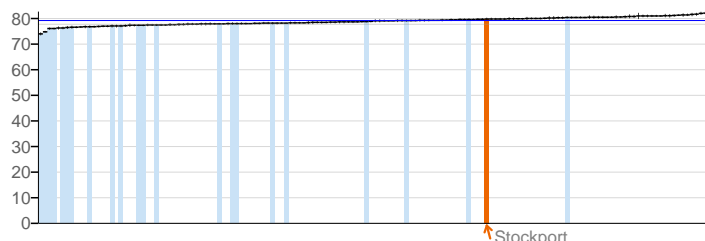
0.1i. Healthy life expectancy at birth - Male



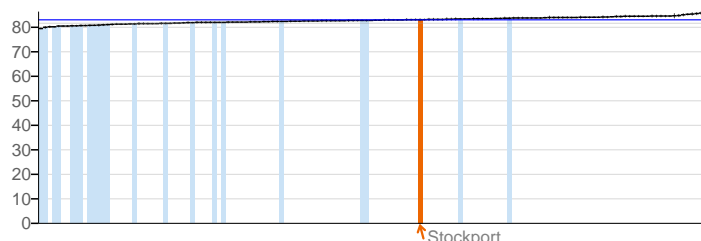
0.1i. Healthy life expectancy at birth - Female



0.1ii. Life Expectancy at birth - Male



0.1ii. Life Expectancy at birth - Female



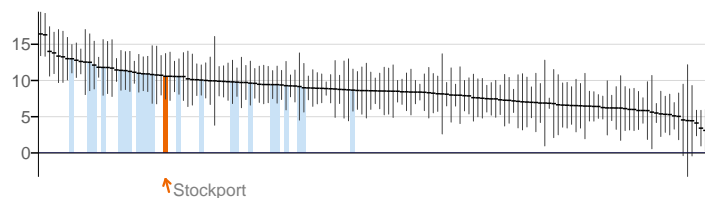
0.2i. Slope index of inequality in life expectancy at birth based on national deprivation deciles within England (provisional) - Male

No data

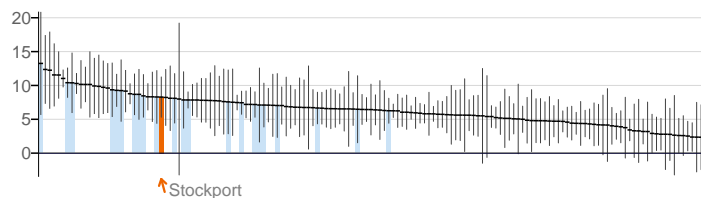
0.2i. Slope index of inequality in life expectancy at birth based on national deprivation deciles within England (provisional) - Female

No data

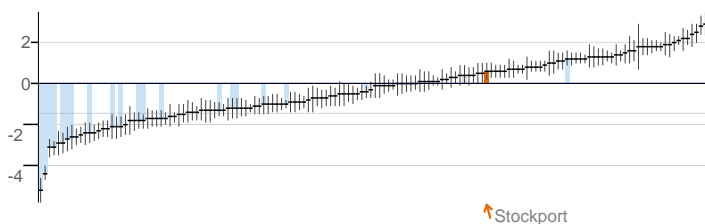
0.2iii. Slope index of inequality in life expectancy at birth within English local authorities, based on local deprivation deciles within each area (provisional) - Male



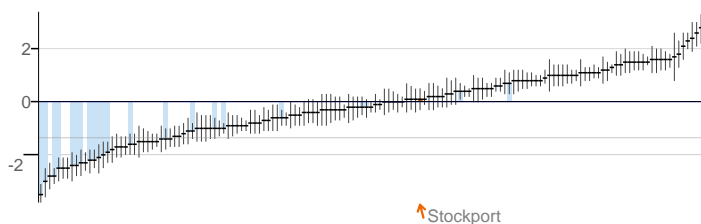
0.2iii. Slope index of inequality in life expectancy at birth within English local authorities, based on local deprivation deciles within each area (provisional) - Female



0.2iv. Gap in life expectancy at birth between each local authority and England as a whole - Male



0.2iv. Gap in life expectancy at birth between each local authority and England as a whole - Female



### Key

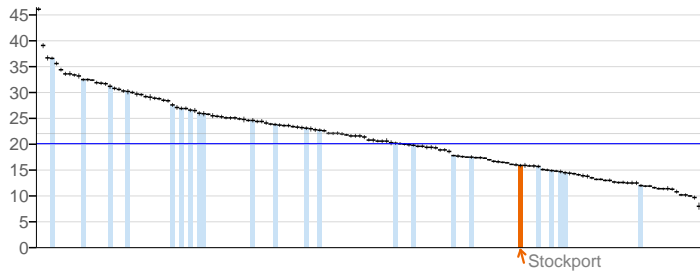
England value and confidence interval

Stockport

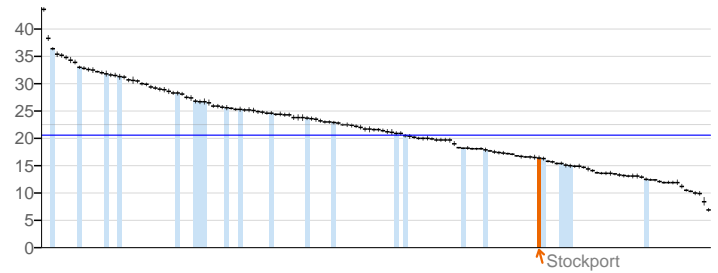
Other local authorities in North West

## Wider determinants of health

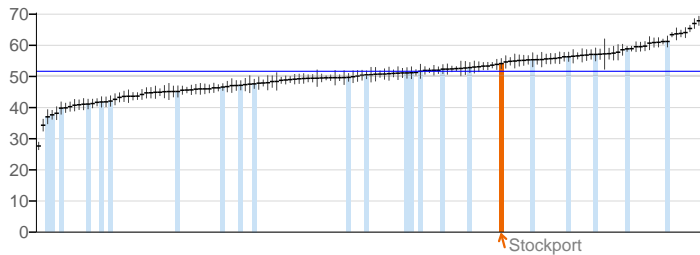
1.01i. Children in poverty (all dependent children under 20)



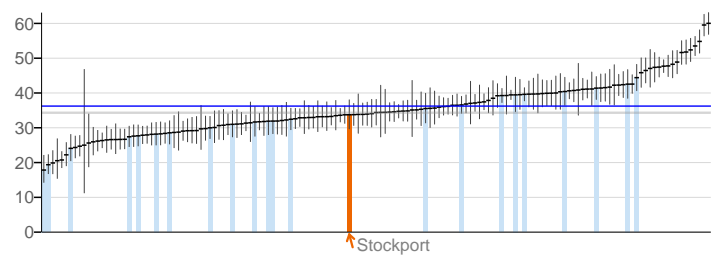
1.01ii. Children in poverty (under 16s)



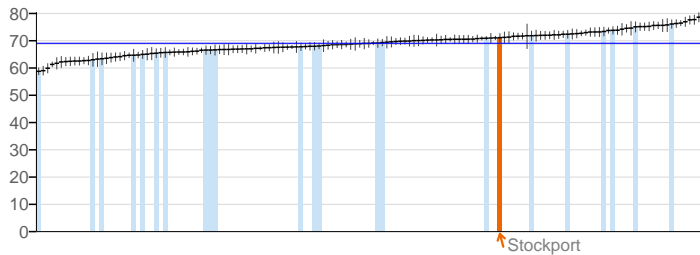
1.02i. School Readiness: The percentage of children achieving a good level of development at the end of reception



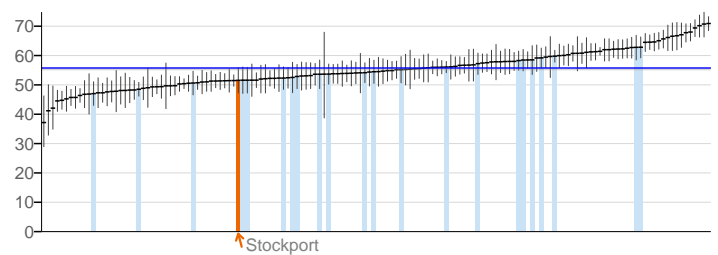
1.02i. School Readiness: The percentage of children with free school meal status achieving a good level of development at the end of reception



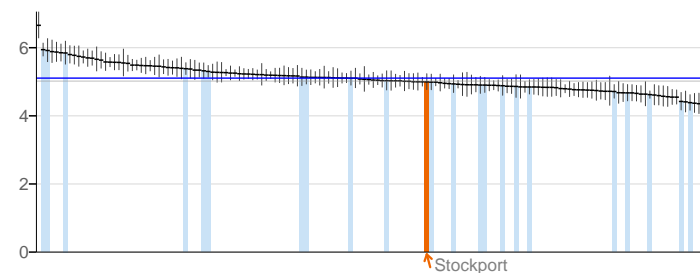
1.02ii. School Readiness: The percentage of Year 1 pupils achieving the expected level in the phonics screening check



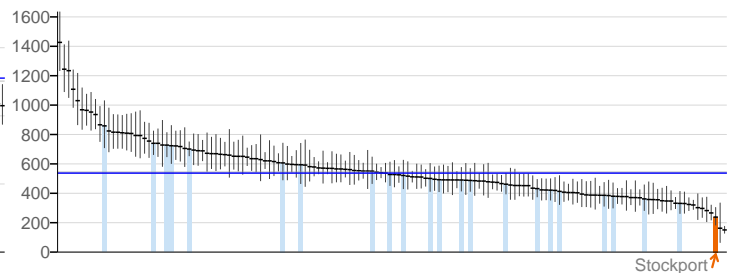
1.02ii. School Readiness: The percentage of Year 1 pupils with free school meal status achieving the expected level in the phonics screening check



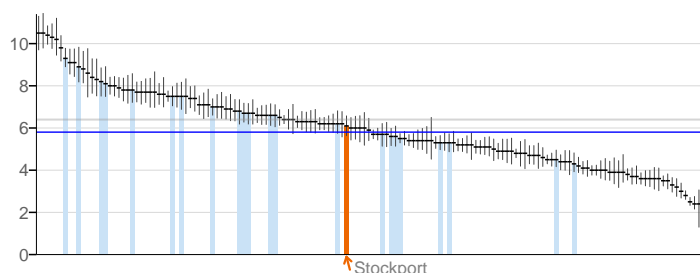
1.03. Pupil absence



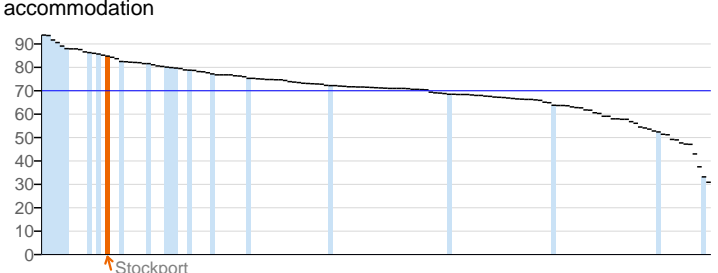
1.04. First time entrants to the youth justice system



1.05. 16-18 year olds not in education employment or training



1.06i. Adults with a learning disability who live in stable and appropriate accommodation



## Key

England value and confidence interval

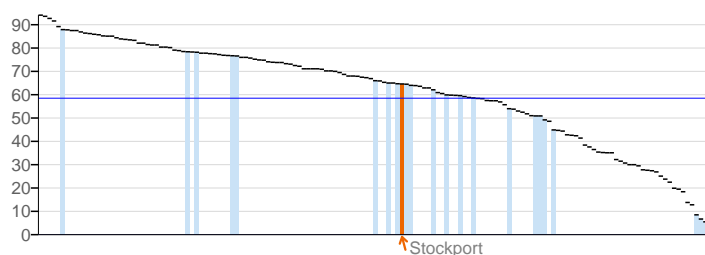
Stockport

Other local authorities in North West

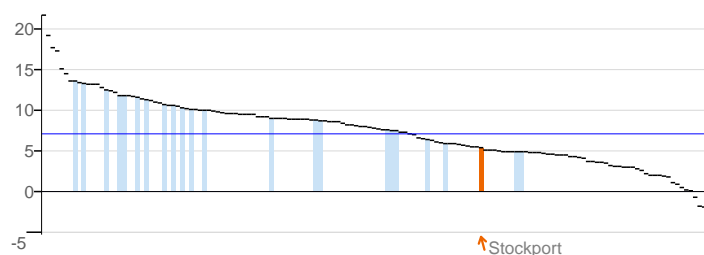
# Stockport

## Wider determinants of health

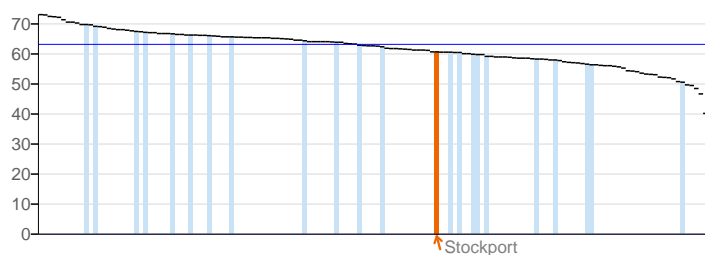
1.06ii. % of adults in contact with secondary mental health services who live in stable and appropriate accommodation



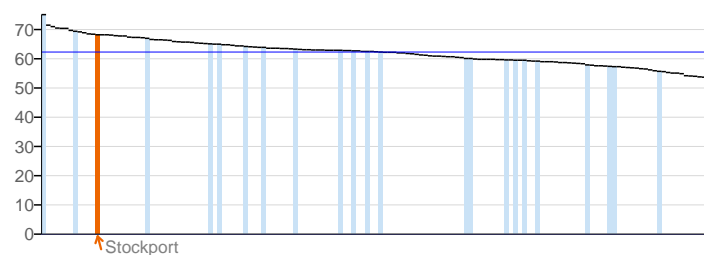
1.08i. Gap in the employment rate between those with a long-term health condition and the overall employment rate



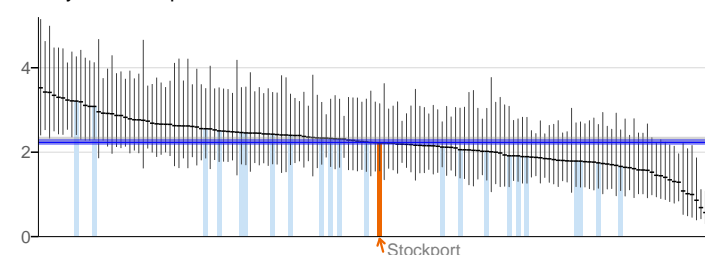
1.08ii. Gap in the employment rate between those with a learning disability and the overall employment rate



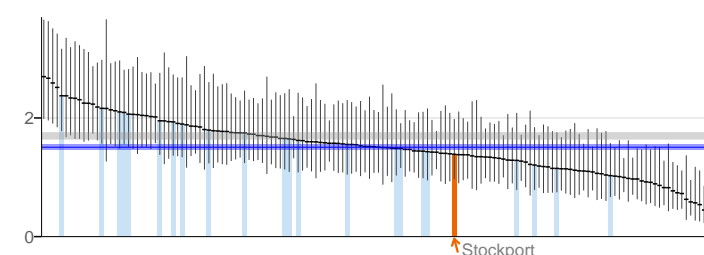
1.08iii. Gap in the employment rate for those in contact with secondary mental health services and the overall employment rate



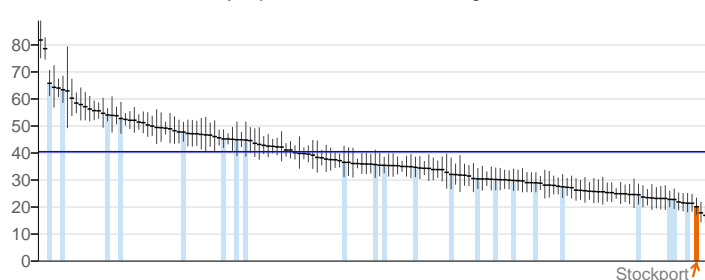
1.09i. Sickness absence - The percentage of employees who had at least one day off in the previous week



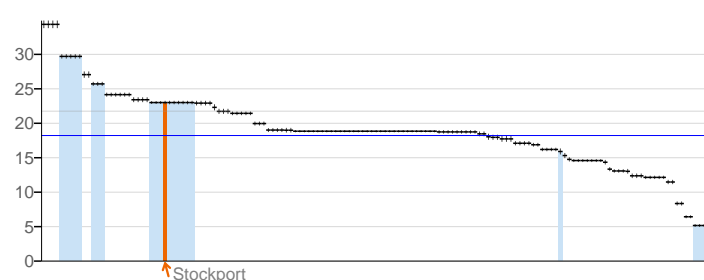
1.09ii. Sickness absence - The percent of working days lost due to sickness absence



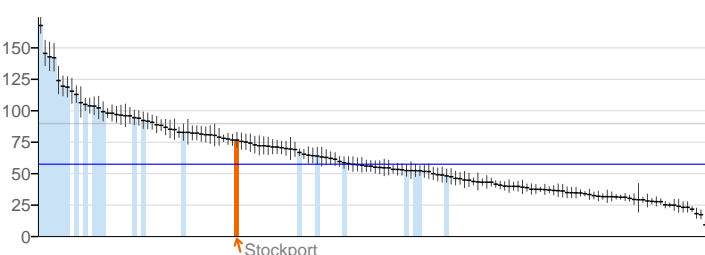
1.10. Killed and seriously injured casualties on England's roads



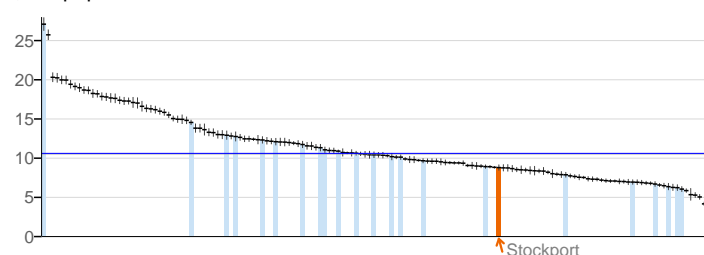
1.11. Domestic Abuse



1.12i. Violent crime (including sexual violence) - hospital admissions for violence



1.12ii. Violent crime (including sexual violence) - violence offences per 1,000 population



### Key

England value and confidence interval

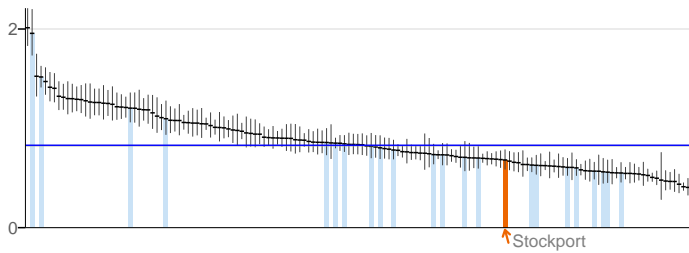
Stockport

Other local authorities in North West

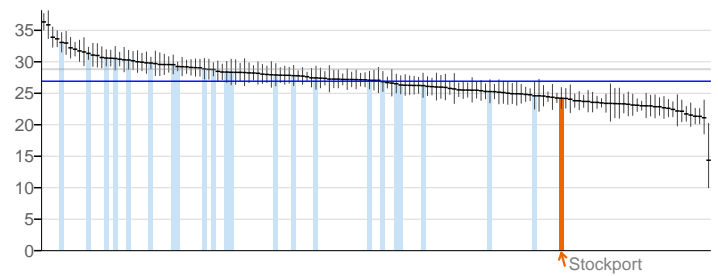


## Wider determinants of health

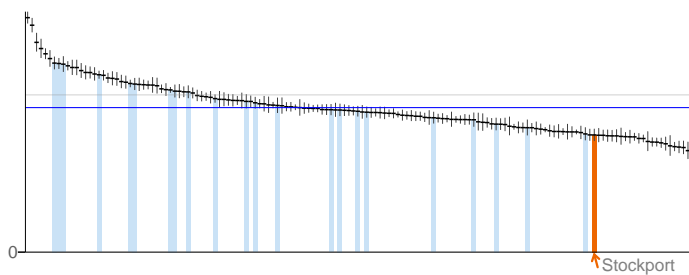
1.12iii. 1.12iii- Violent crime (including sexual violence) - Rate of sexual offences per 1,000 population



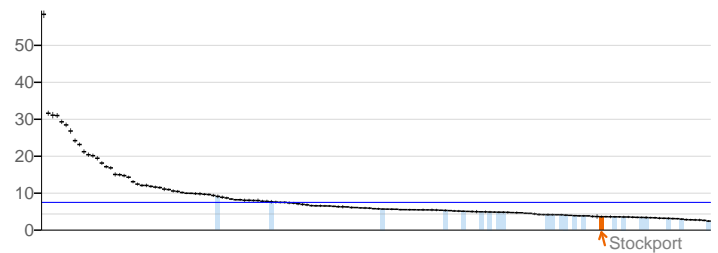
1.13i. Re-offending levels - percentage of offenders who re-offend



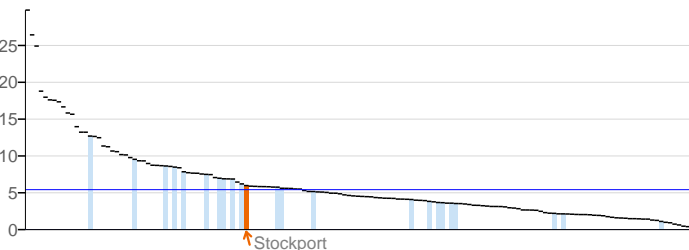
1.13ii. Re-offending levels - average number of re-offences per offender



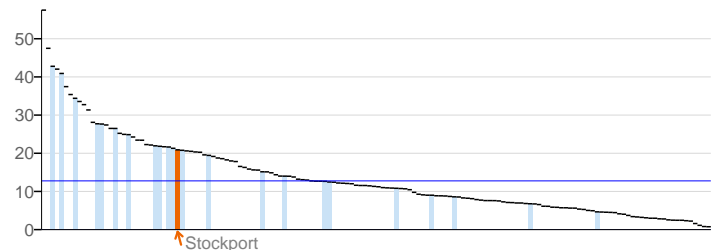
1.14i. The percentage of the population affected by noise - Number of complaints about noise



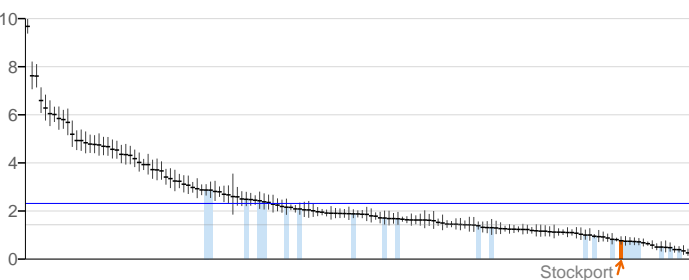
1.14ii. The percentage of the population exposed to road, rail and air transport noise of 65dB(A) or more, during the daytime



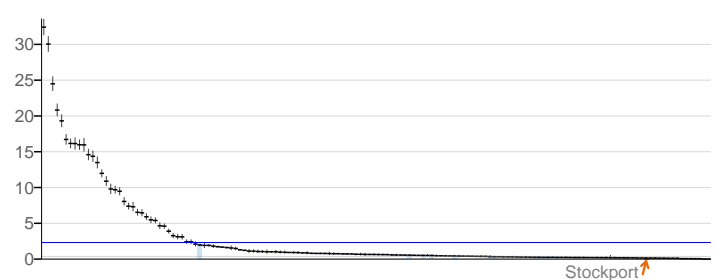
1.14iii. The percentage of the population exposed to road, rail and air transport noise of 55 dB(A) or more during the night-time



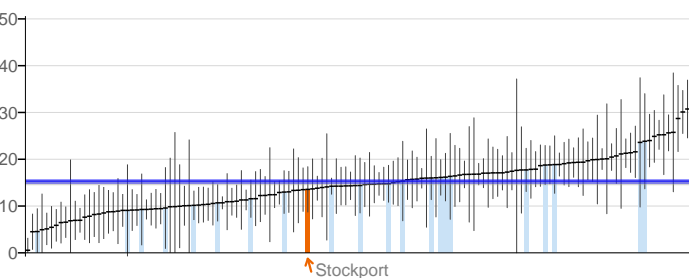
1.15i. Statutory homelessness - homelessness acceptances



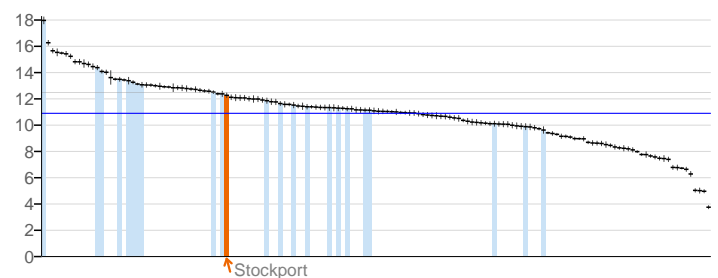
1.15ii. Statutory homelessness - households in temporary accommodation



1.16. Utilisation of outdoor space for exercise/health reasons



1.17. Fuel Poverty



## Key

England value and confidence interval

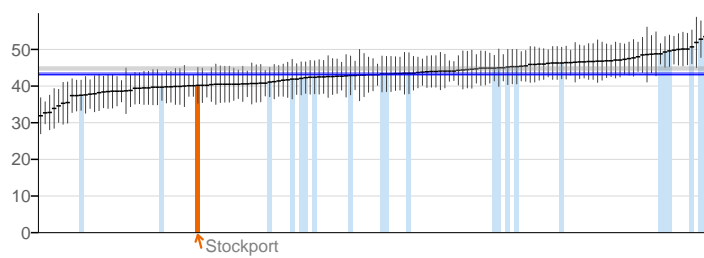
Stockport

Other local authorities in North West

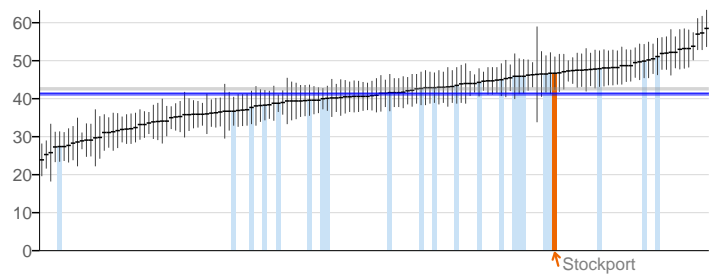
# Stockport

## Wider determinants of health

1.18i. Social Isolation: % of adult social care users who have as much social contact as they would like



1.18ii. Loneliness and Isolation in adult carers



### Key

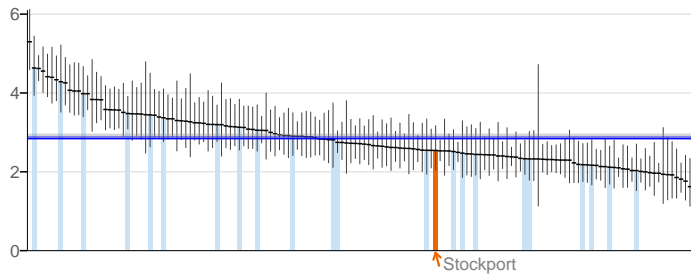
— England value and confidence interval

↑ Stockport

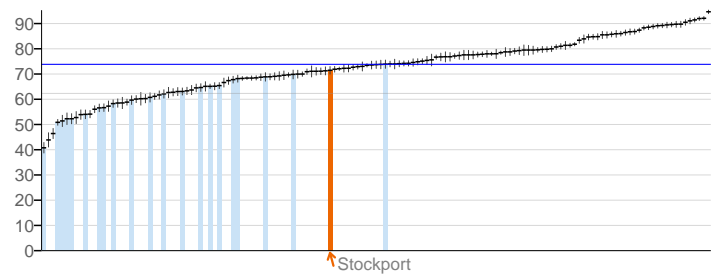
■ Other local authorities in North West

## Health improvement

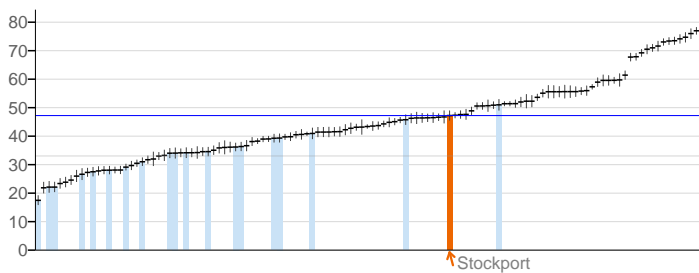
2.01. Low birth weight of term babies



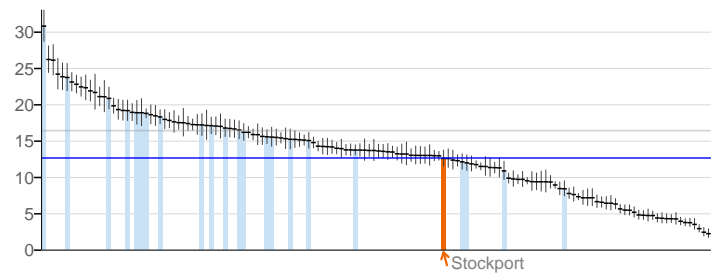
2.02i. Breastfeeding - Breastfeeding initiation



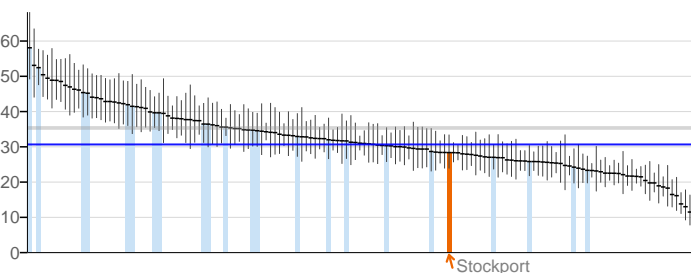
2.02ii. Breastfeeding - Breastfeeding prevalence at 6-8 weeks after birth



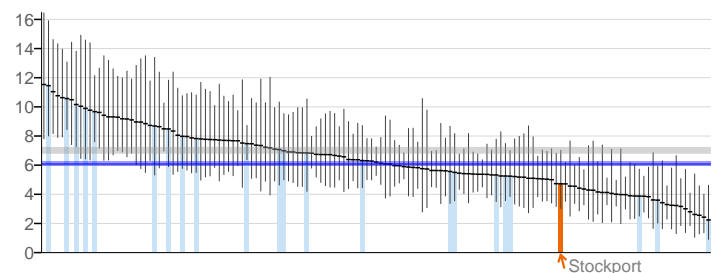
2.03. Smoking status at time of delivery



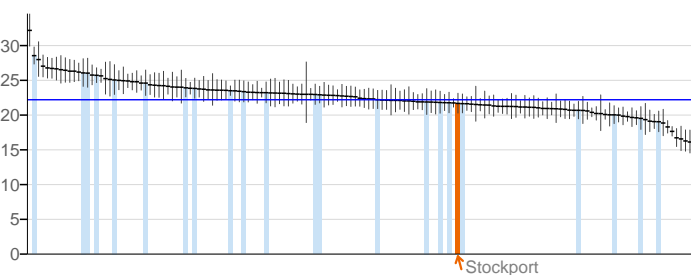
2.04. Under 18 conceptions



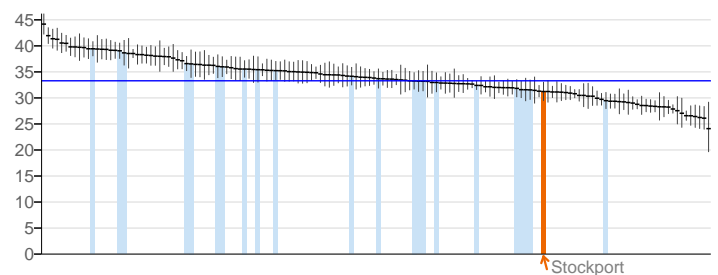
2.04. Under 18 conceptions: conceptions in those aged under 16



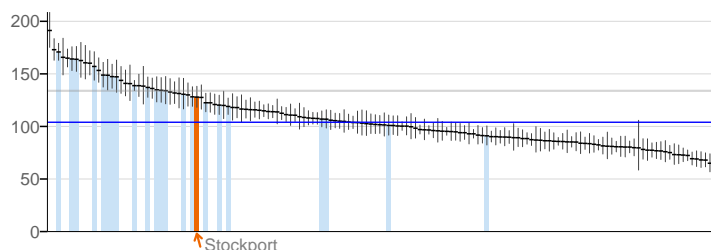
2.06i. Excess weight in 4-5 and 10-11 year olds - 4-5 year olds



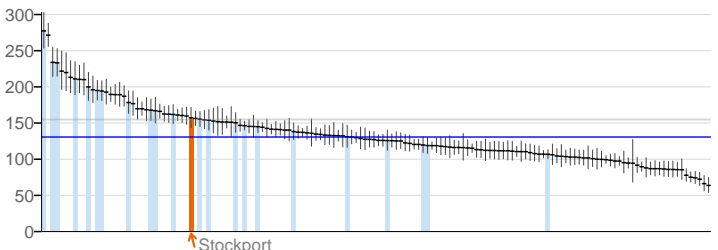
2.06ii. Excess weight in 4-5 and 10-11 year olds - 10-11 year olds



2.07i. Hospital admissions caused by unintentional and deliberate injuries in children (aged 0-14 years)



2.07ii. Hospital admissions caused by unintentional and deliberate injuries in young people (aged 15-24)



## Key

England value and confidence interval

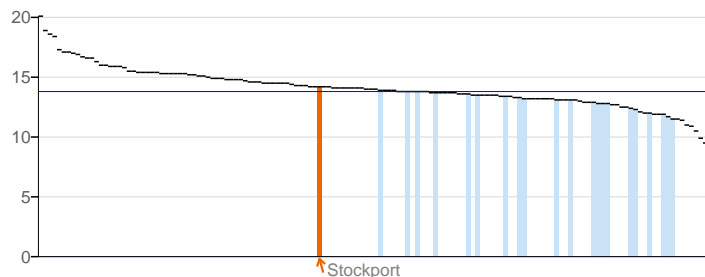
Stockport

Other local authorities in North West

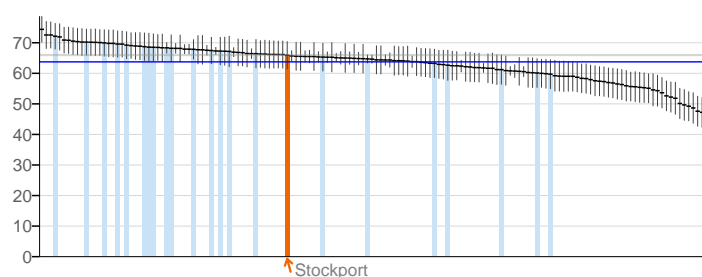
## Stockport

## Health improvement

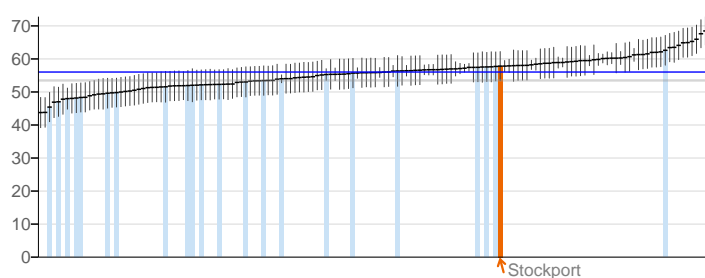
2.08. Emotional well-being of looked after children



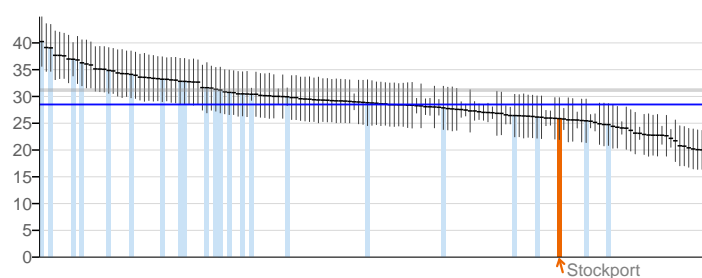
2.12. Excess Weight in Adults



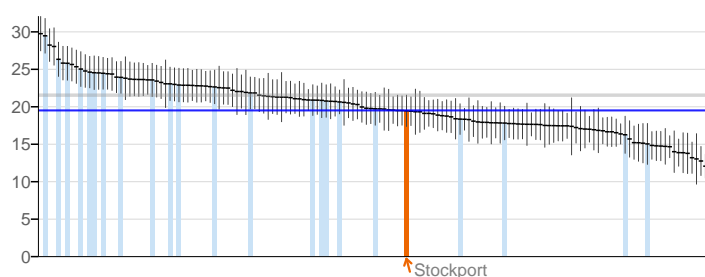
2.13i. Percentage of physically active and inactive adults - active adults



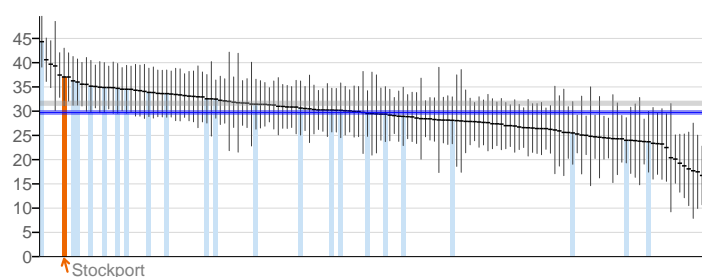
2.13ii. Percentage of active and inactive adults - inactive adults



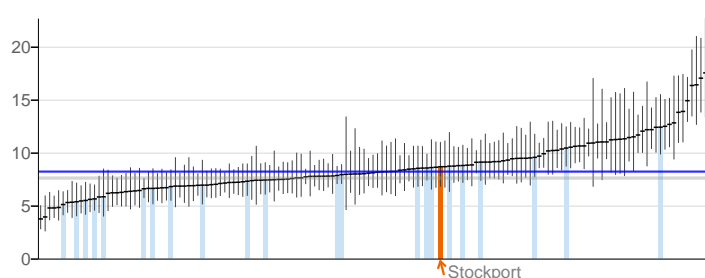
2.14. Smoking Prevalence



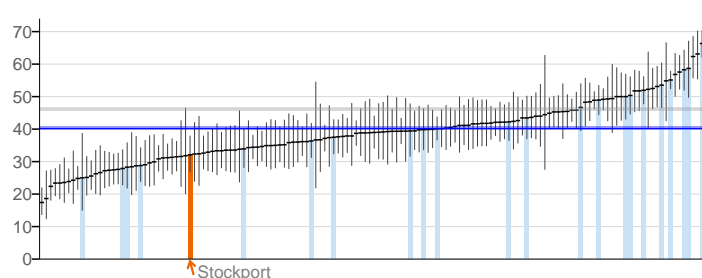
2.14. Smoking prevalence - routine &amp; manual



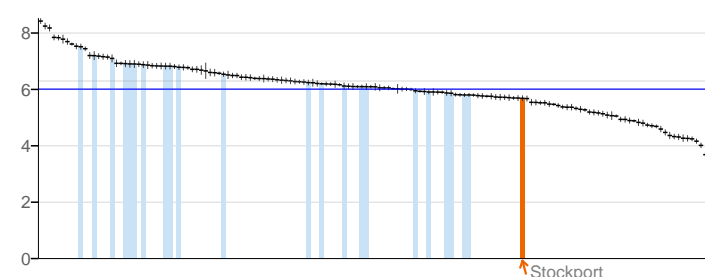
2.15i. Successful completion of drug treatment - opiate users



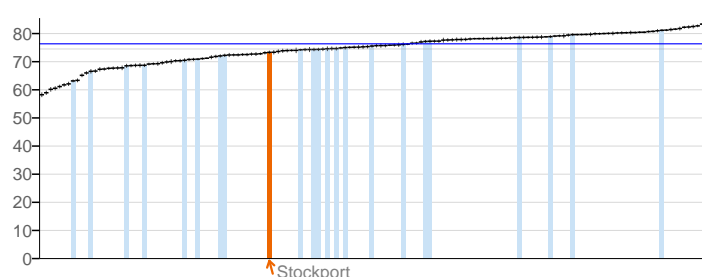
2.15ii. Successful completion of drug treatment - non-opiate users



2.17. Recorded diabetes



2.20i. Cancer screening coverage - breast cancer



## Key

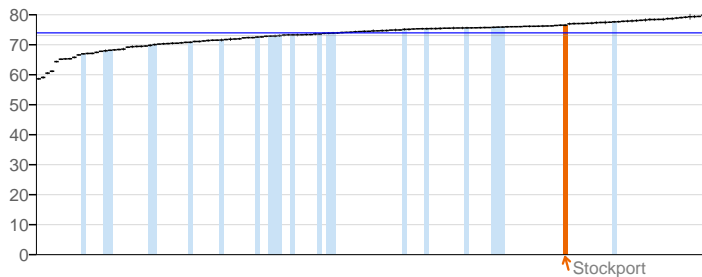
England value and confidence interval

Stockport

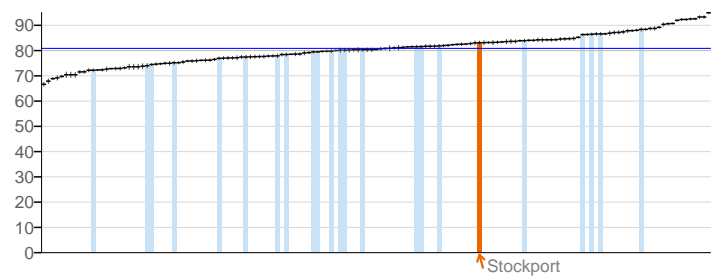
Other local authorities in North West

## Health improvement

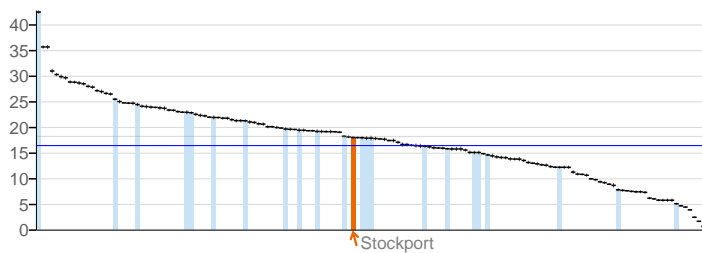
2.20ii. Cancer screening coverage - cervical cancer



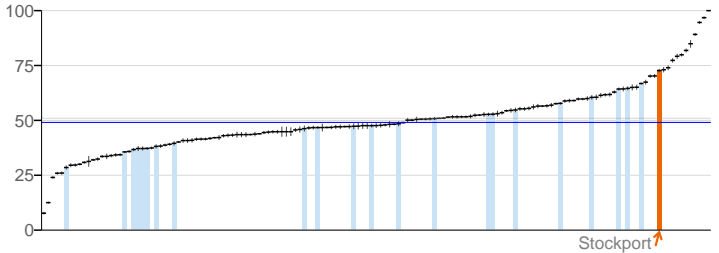
2.21vii. Access to non-cancer screening programmes - diabetic retinopathy



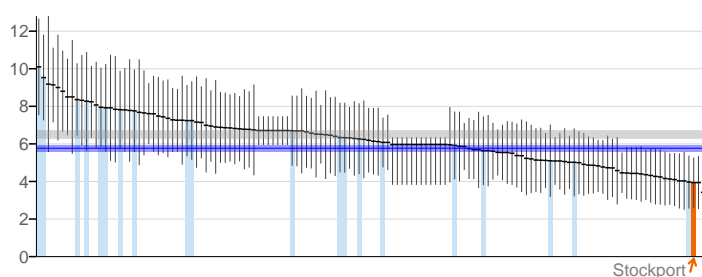
2.22i. Take up of NHS Health Check Programme by those eligible - health check offered



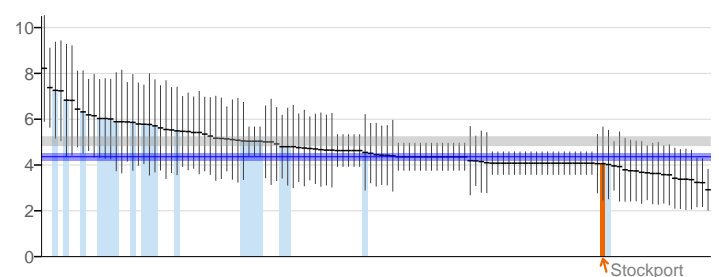
2.22ii. Take up of NHS Health Check programme by those eligible - health check take up



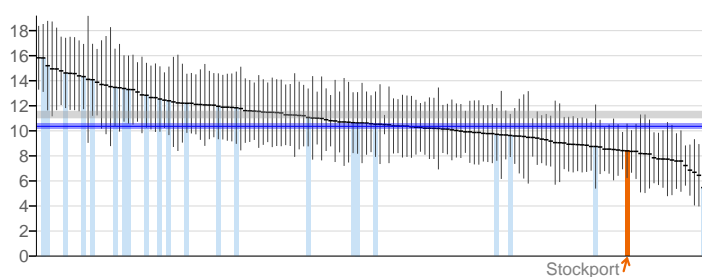
2.23i. Self-reported well-being - people with a low satisfaction score



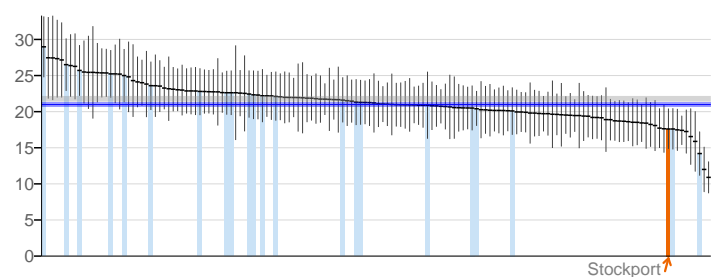
2.23ii. Self-reported well-being - people with a low worthwhile score



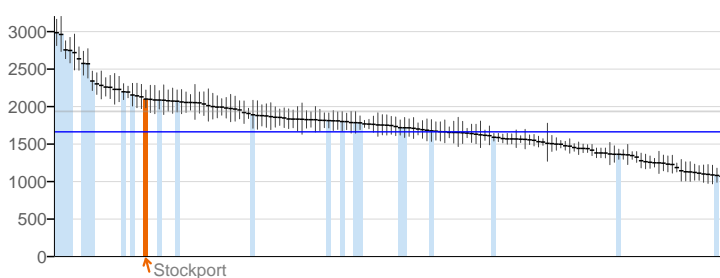
2.23iii. Self-reported well-being - people with a low happiness score



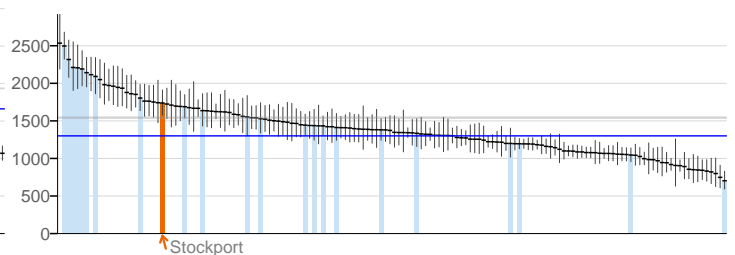
2.23iv. Self-reported well-being - people with a high anxiety score



2.24i. Injuries due to falls in people aged 65 and over (Persons)



2.24i. Injuries due to falls in people aged 65 and over (males/females) - Male



## Key

England value and confidence interval

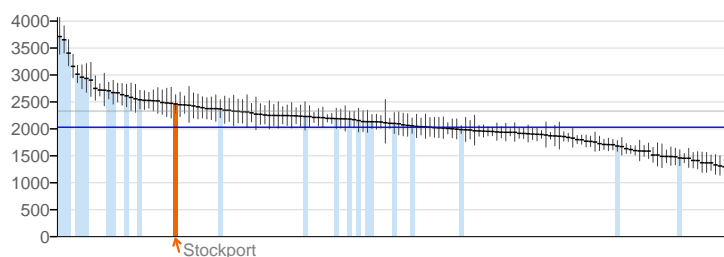
Stockport

Other local authorities in North West

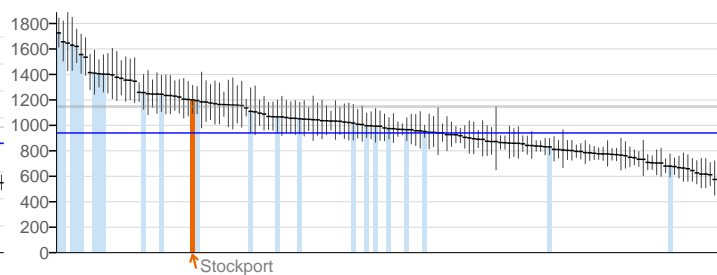
# Stockport

## Health improvement

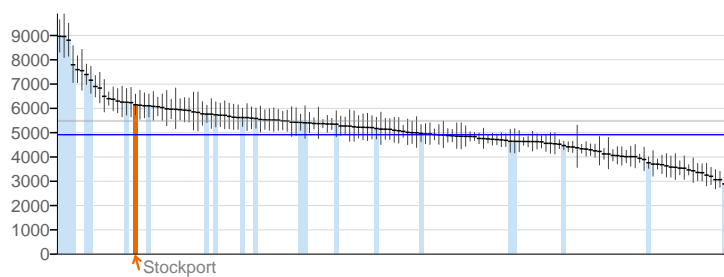
2.24i. Injuries due to falls in people aged 65 and over (males/females) - Female



2.24ii. Injuries due to falls in people aged 65 and over - aged 65-79



2.24iii. Injuries due to falls in people aged 65 and over - aged 80+



### Key

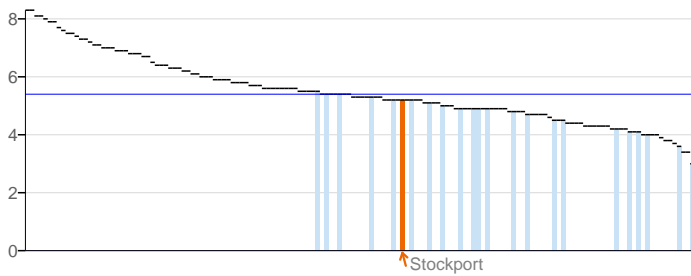
— England value and confidence interval

↑ Stockport

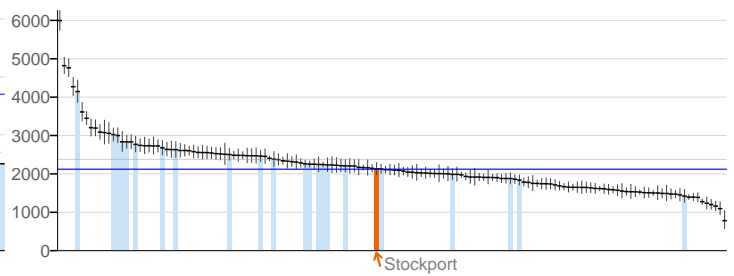
■ Other local authorities in North West

## Health protection

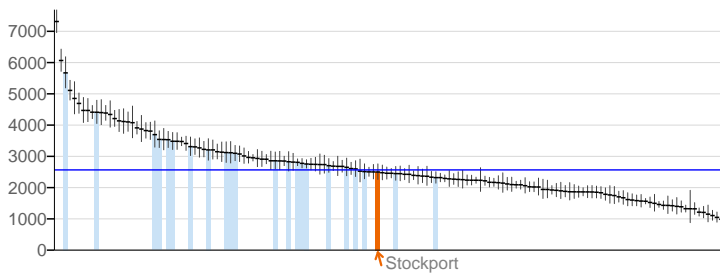
3.01. Fraction of mortality attributable to particulate air pollution



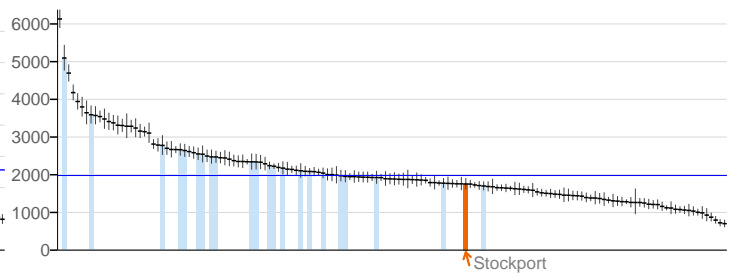
3.02i. Chlamydia diagnoses (15-24 year olds) - Old NCSP data



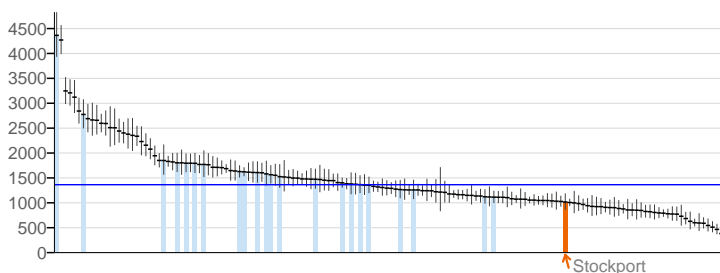
3.02ii. Chlamydia diagnoses (15-24 year olds) - CTAD - Female



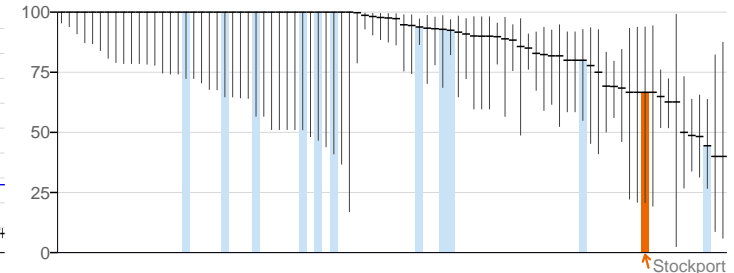
3.02ii. Chlamydia diagnoses (15-24 year olds) - CTAD



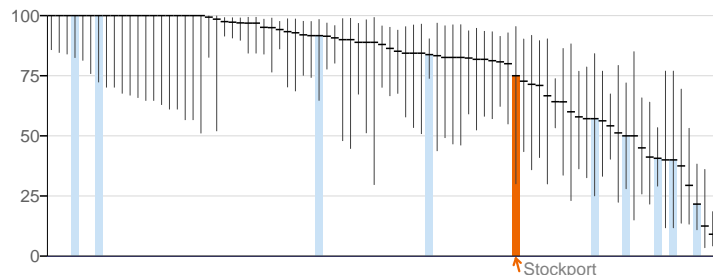
3.02ii. Chlamydia diagnoses (15-24 year olds) - CTAD - Male



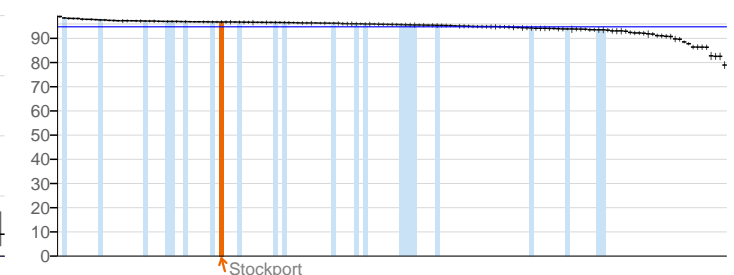
3.03i. Population vaccination coverage - Hepatitis B (1 year old)



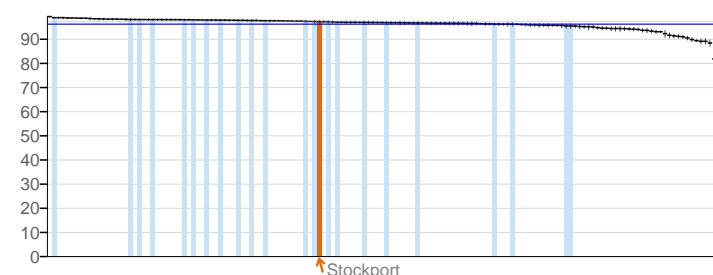
3.03i. Population vaccination coverage - Hepatitis B (2 years old)



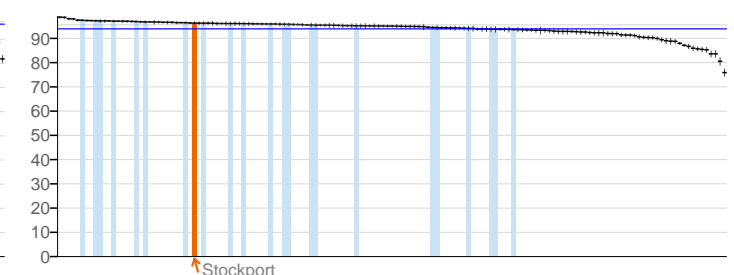
3.03iii. Population vaccination coverage - Dtap / IPV / Hib (1 year old)



3.03iii. Population vaccination coverage - Dtap / IPV / Hib (2 years old)



3.03iv. Population vaccination coverage - MenC



## Key

England value and confidence interval

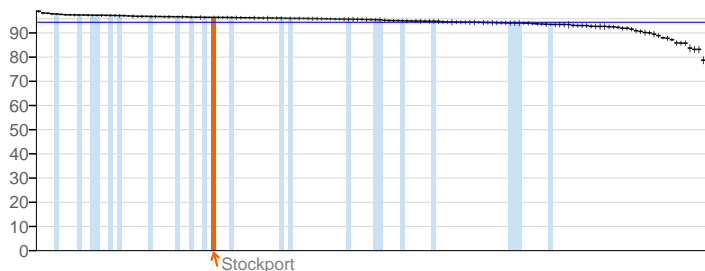
Stockport

Other local authorities in North West

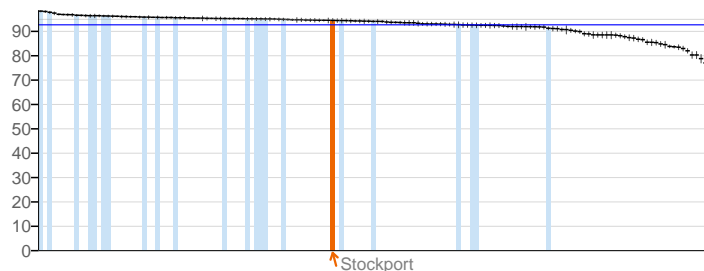
## Stockport

## Health protection

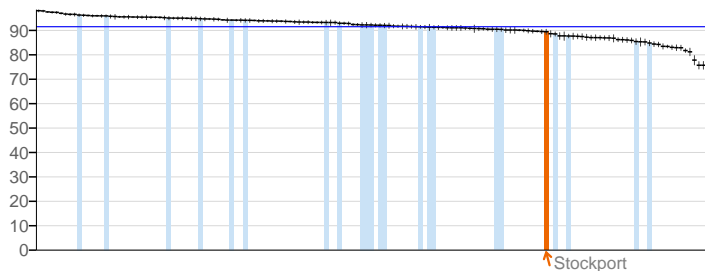
3.03v. Population vaccination coverage - PCV



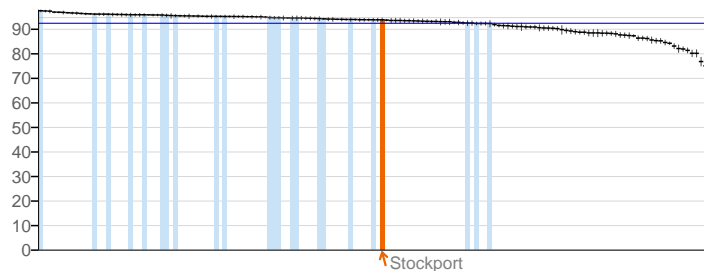
3.03vi. Population vaccination coverage - Hib / MenC booster (2 years old)



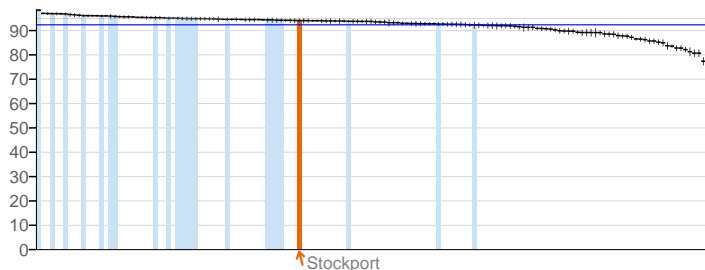
3.03vi. Population vaccination coverage - Hib / Men C booster (5 years)



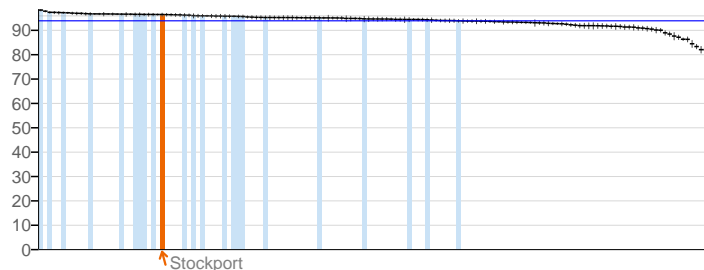
3.03vii. Population vaccination coverage - PCV booster



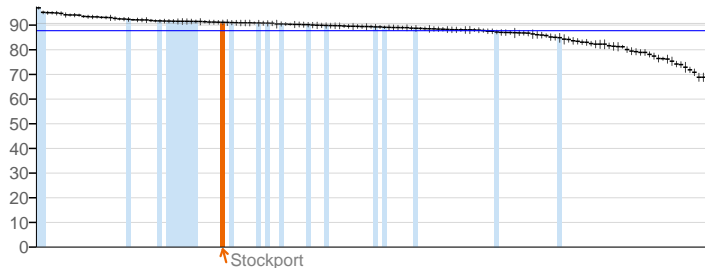
3.03viii. Population vaccination coverage - MMR for one dose (2 years old)



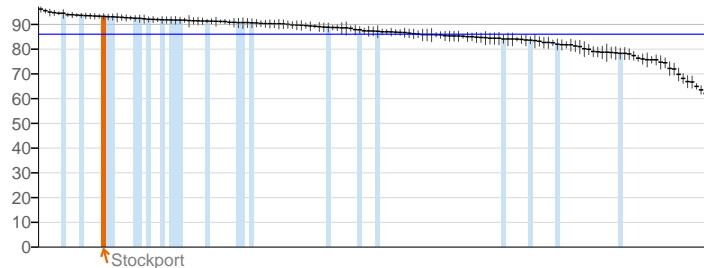
3.03ix. Population vaccination coverage - MMR for one dose (5 years old)



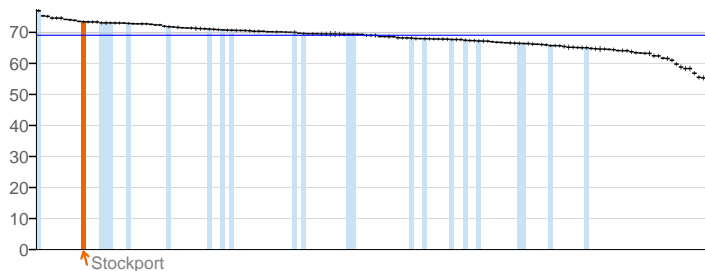
3.03x. Population vaccination coverage - MMR for two doses (5 years old)



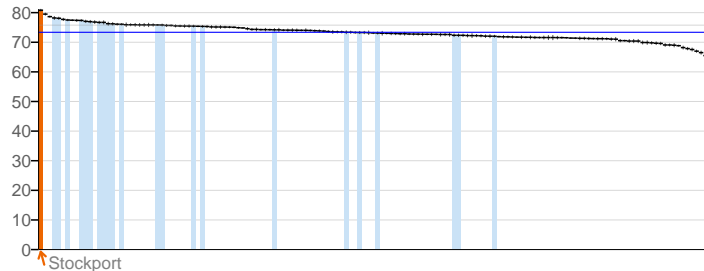
3.03xii. Population vaccination coverage - HPV



3.03xiii. Population vaccination coverage - PPV



3.03xiv. Population vaccination coverage - Flu (aged 65+)



## Key

England value and confidence interval

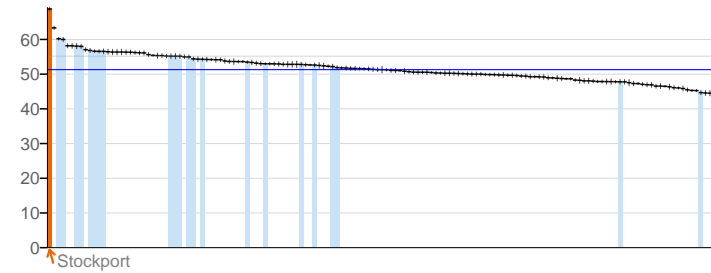
Stockport

Other local authorities in North West

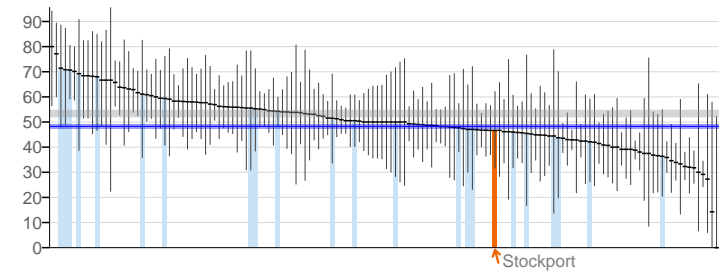


## Health protection

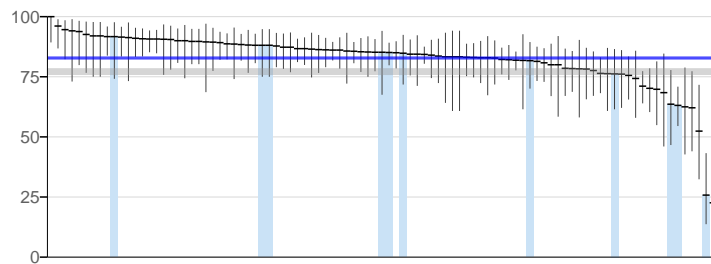
3.03xv. Population vaccination coverage - Flu (at risk individuals)



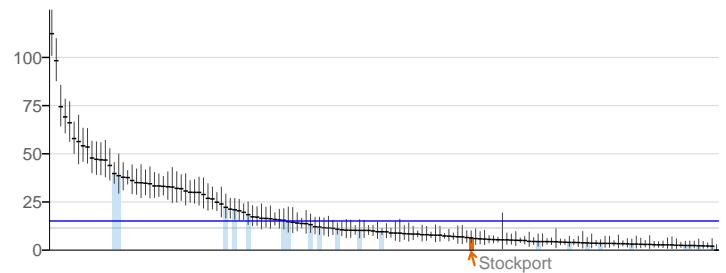
3.04. People presenting with HIV at a late stage of infection



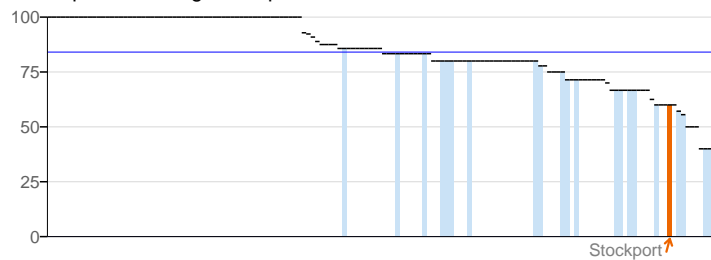
3.05i. Treatment completion for TB



3.05ii. Incidence of TB



3.06. Public sector organisations with a board approved sustainable development management plan



## Key

England value and confidence interval

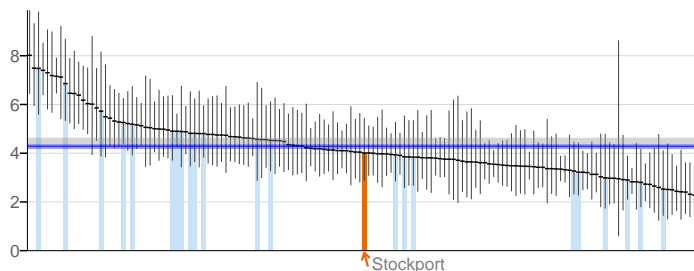
Stockport

Other local authorities in North West

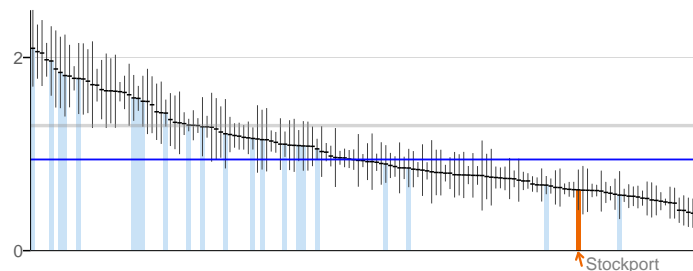
## Stockport

## Healthcare and premature mortality

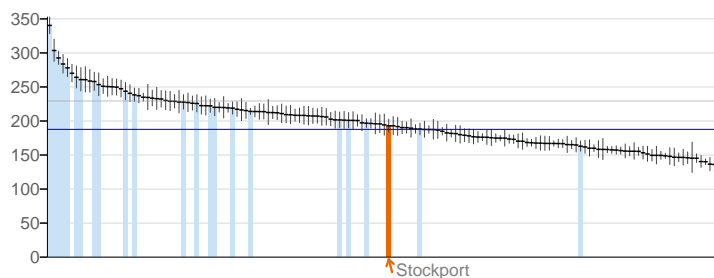
4.01. Infant mortality



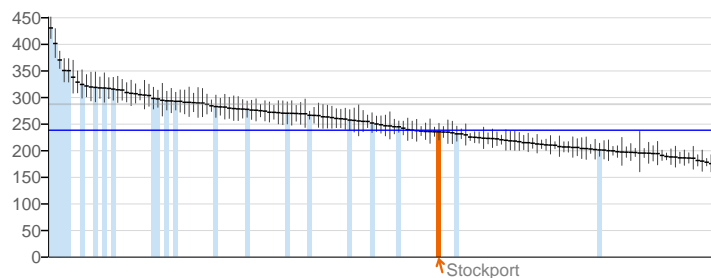
4.02. Tooth decay in children aged 5



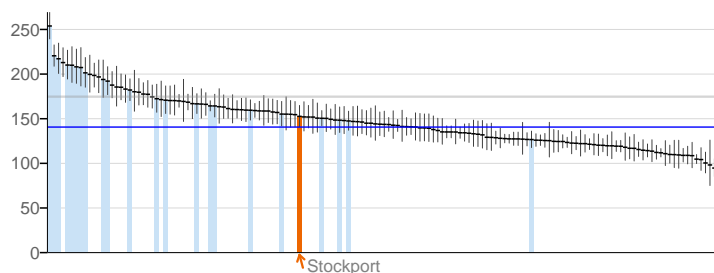
4.03. Mortality rate from causes considered preventable



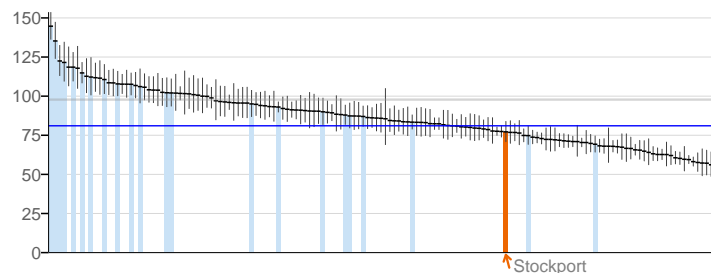
4.03. Mortality rate from causes considered preventable - Male



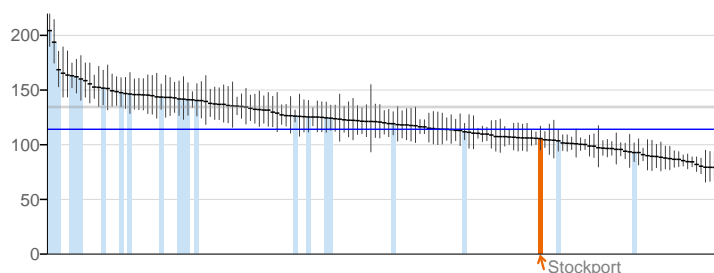
4.03. Mortality rate from causes considered preventable - Female



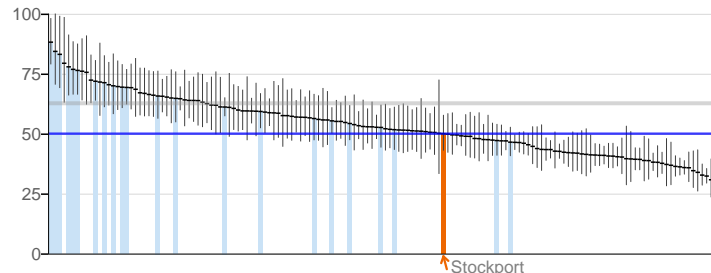
4.04i. Under 75 mortality rate from all cardiovascular diseases



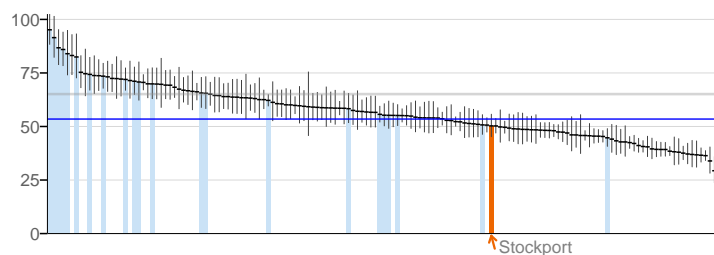
4.04i. Under 75 mortality rate from all cardiovascular diseases - Male



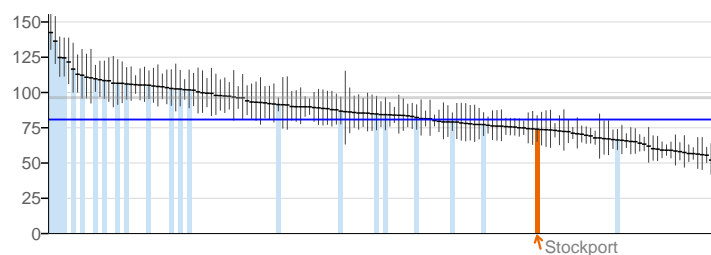
4.04i. Under 75 mortality rate from all cardiovascular diseases - Female



4.04ii. Under 75 mortality rate from cardiovascular diseases considered preventable



4.04ii. Under 75 mortality rate from cardiovascular diseases considered preventable - Male



## Key

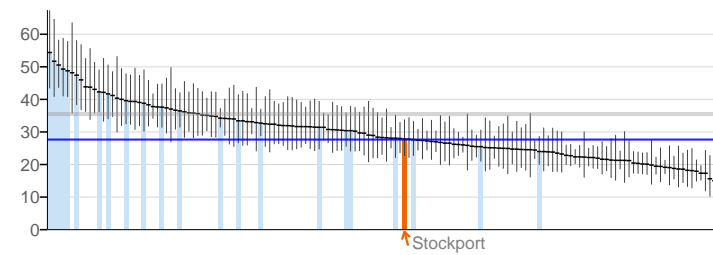
England value and confidence interval

Stockport

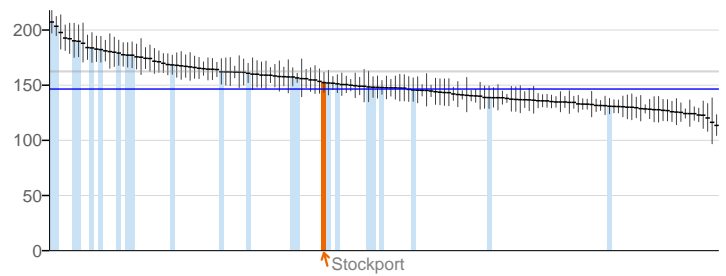
Other local authorities in North West

## Healthcare and premature mortality

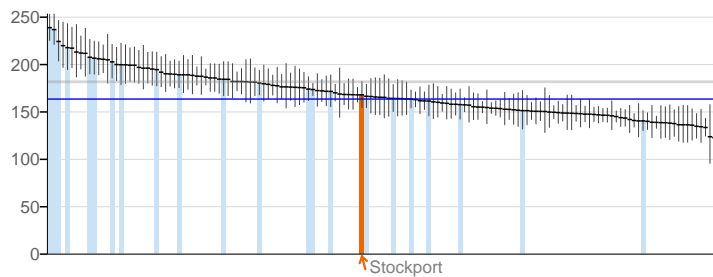
4.04ii. Under 75 mortality rate from cardiovascular diseases considered preventable - Female



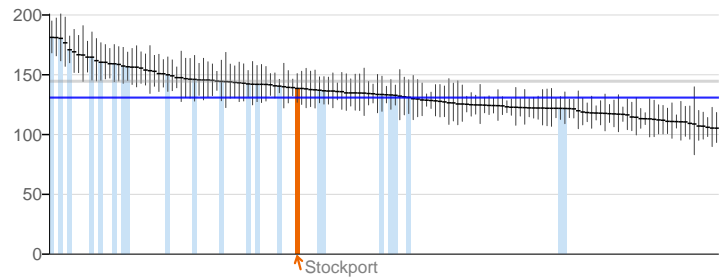
4.05i. Under 75 mortality rate from cancer



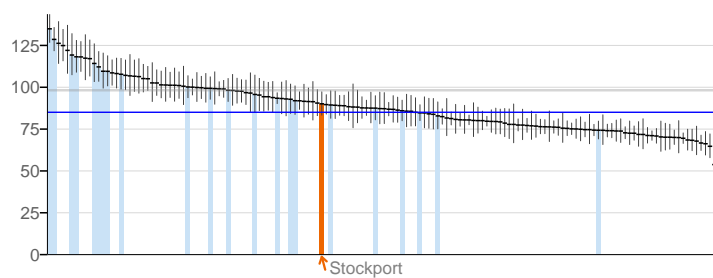
4.05i. Under 75 mortality rate from cancer - Male



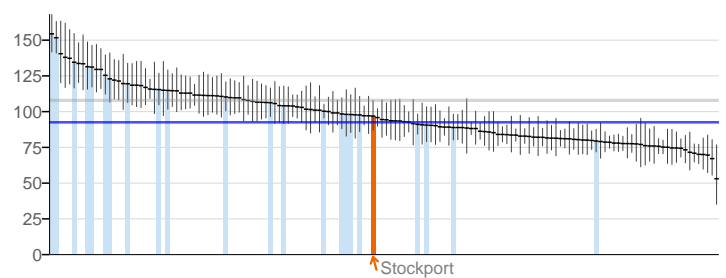
4.05i. Under 75 mortality rate from cancer - Female



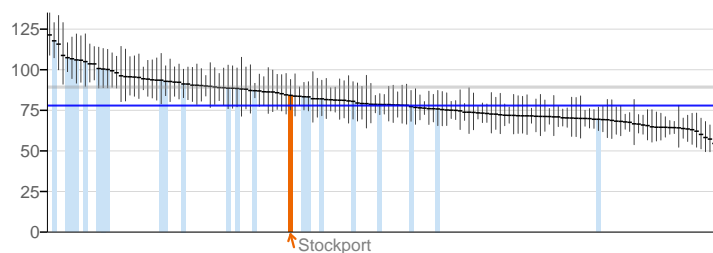
4.05ii. Under 75 mortality rate from cancer considered preventable



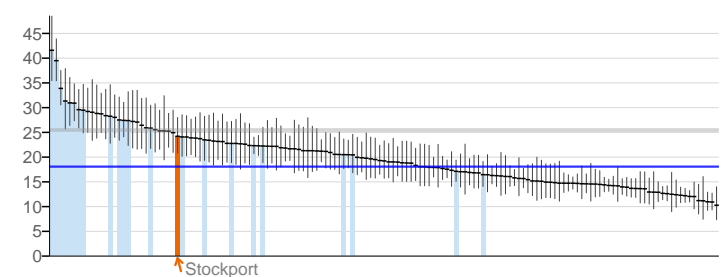
4.05ii. Under 75 mortality rate from cancer considered preventable - Male



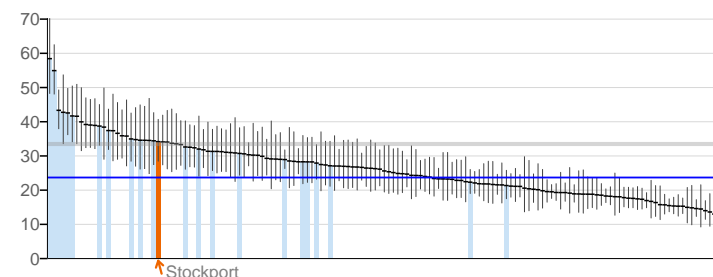
4.05ii. Under 75 mortality rate from cancer considered preventable - Female



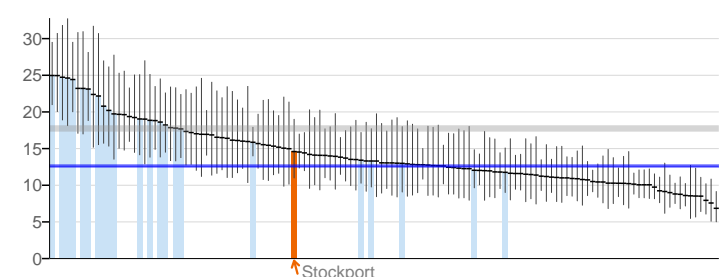
4.06i. Under 75 mortality rate from liver disease



4.06i. Under 75 mortality rate from liver disease - Male



4.06i. Under 75 mortality rate from liver disease - Female



## Key

England value and confidence interval

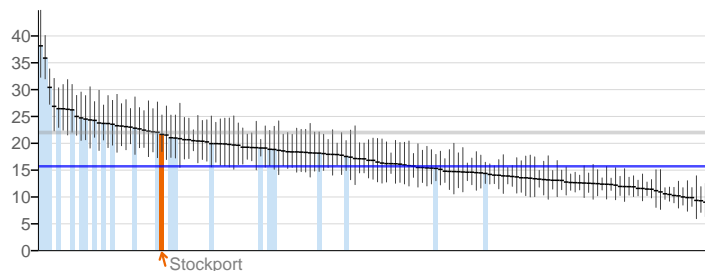
Stockport

Other local authorities in North West

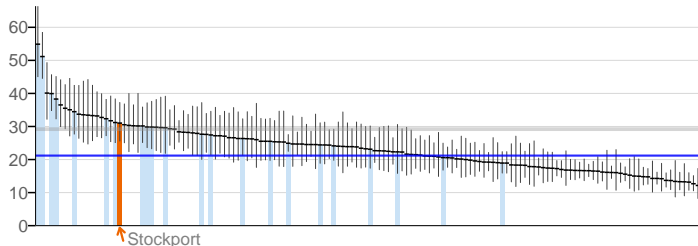
# Stockport

## Healthcare and premature mortality

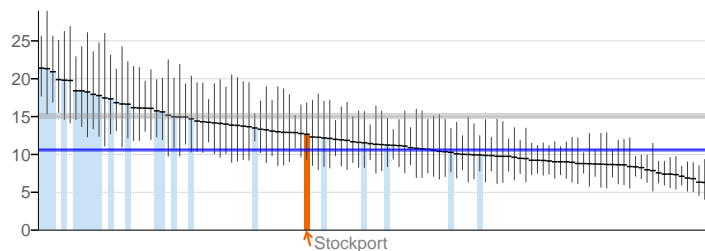
4.06ii. Under 75 mortality rate from liver disease considered preventable



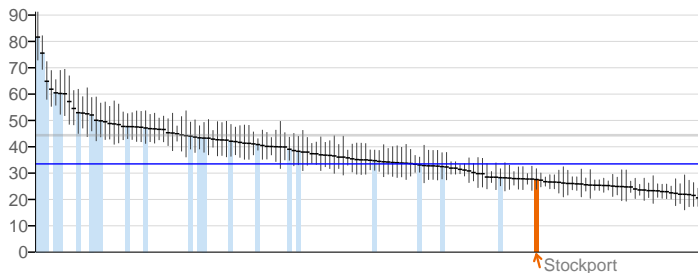
4.06ii. Under 75 mortality rate from liver disease considered preventable - Male



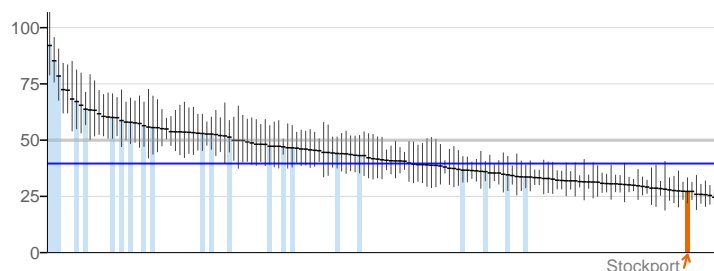
4.06ii. Under 75 mortality rate from liver disease considered preventable - Female



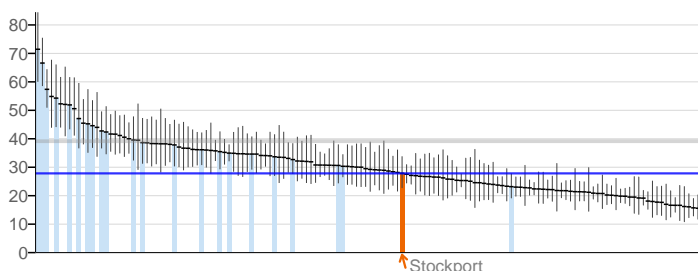
4.07i. Under 75 mortality rate from respiratory disease



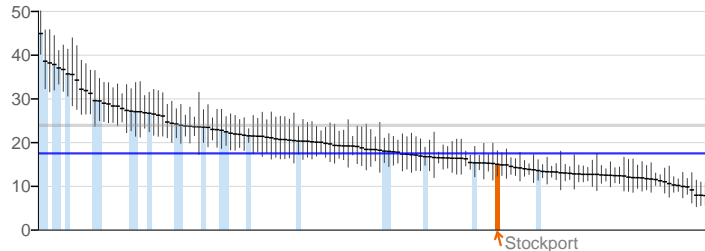
4.07i. Under 75 mortality rate from respiratory disease - Male



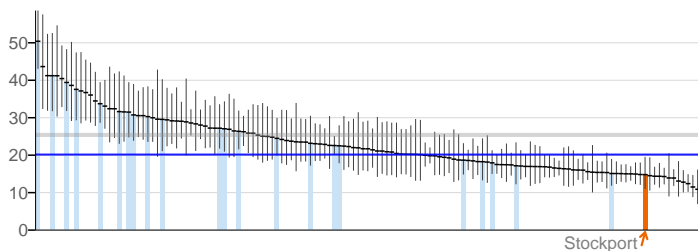
4.07i. Under 75 mortality rate from respiratory disease - Female



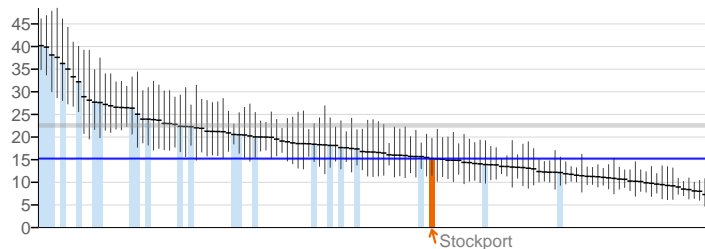
4.07ii. Under 75 mortality rate from respiratory disease considered preventable



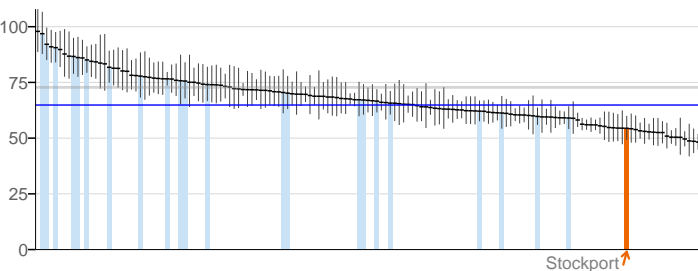
4.07ii. Under 75 mortality rate from respiratory disease considered preventable - Male



4.07ii. Under 75 mortality rate from respiratory disease considered preventable - Female



4.08. Mortality from communicable diseases

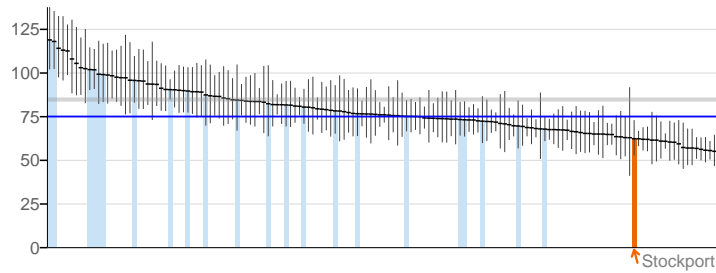


### Key

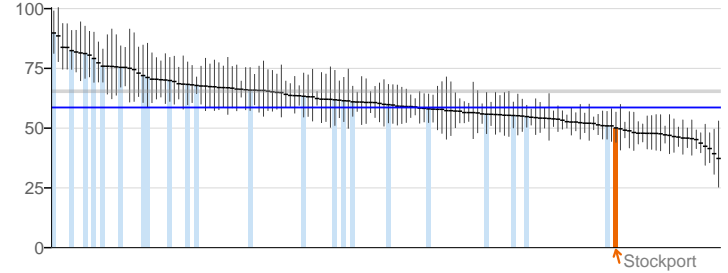
■ England value and confidence interval
 ↑ Stockport
 ■ Other local authorities in North West

## Healthcare and premature mortality

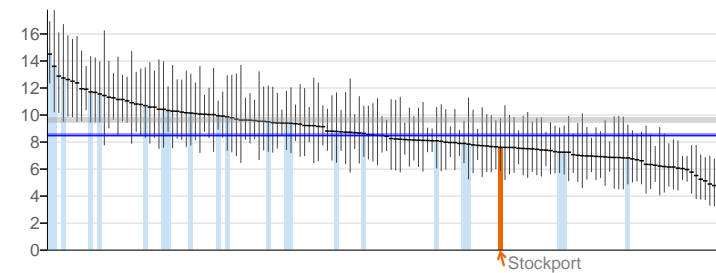
4.08. Mortality from communicable diseases - Male



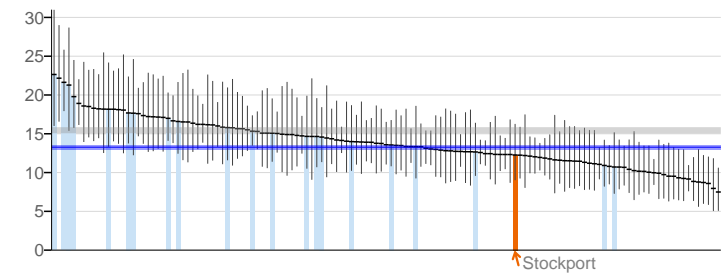
4.08. Mortality from communicable diseases - Female



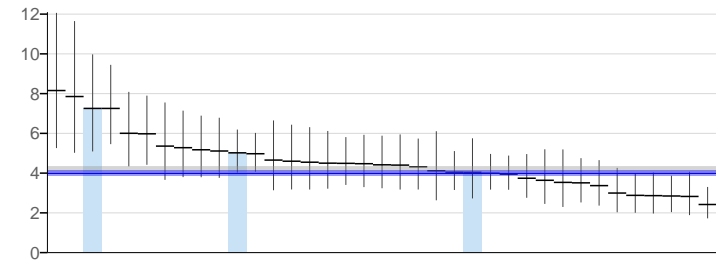
4.10. Suicide rate



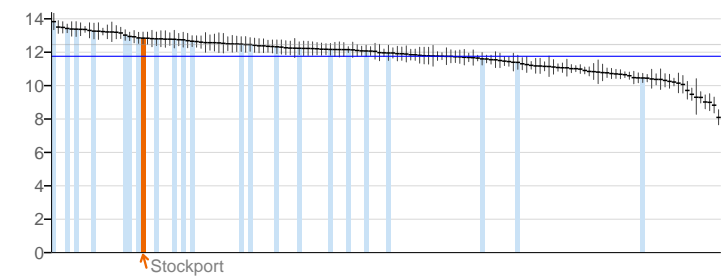
4.10. Suicide rate - Male



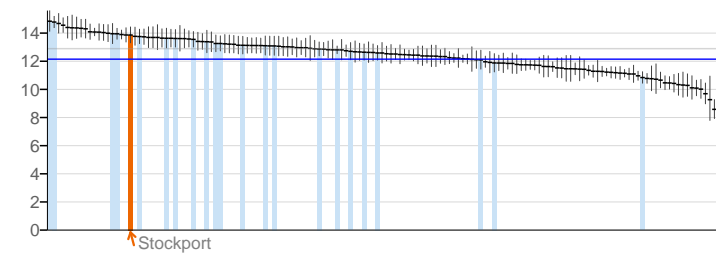
4.10. Suicide rate - Female



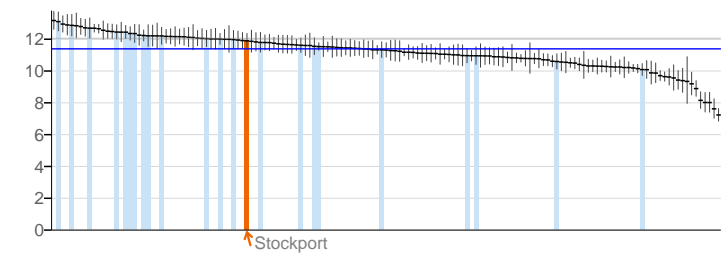
4.11. Emergency readmissions within 30 days of discharge from hospital



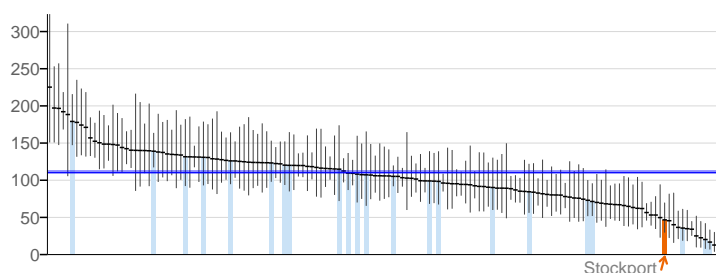
4.11. Emergency readmissions within 30 days of discharge from hospital - Male



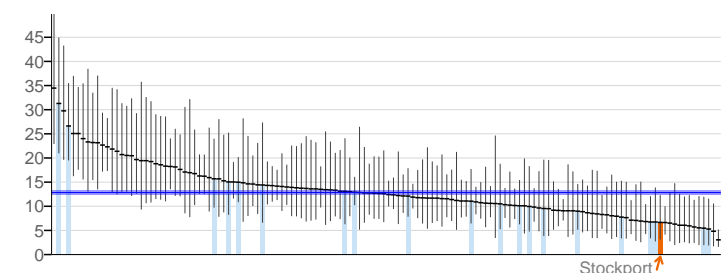
4.11. Emergency readmissions within 30 days of discharge from hospital - Female



4.12i. Preventable sight loss - age related macular degeneration (AMD)



4.12ii. Preventable sight loss - glaucoma

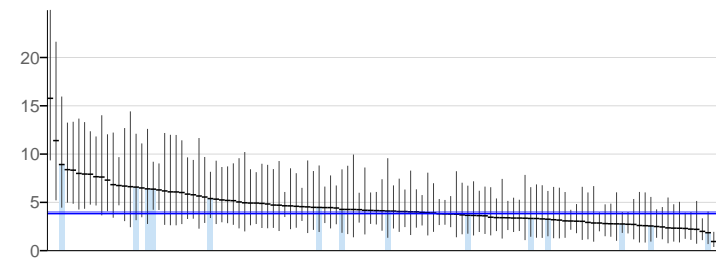


**Key**    ■ England value and confidence interval    ↑ Stockport    ■ Other local authorities in North West

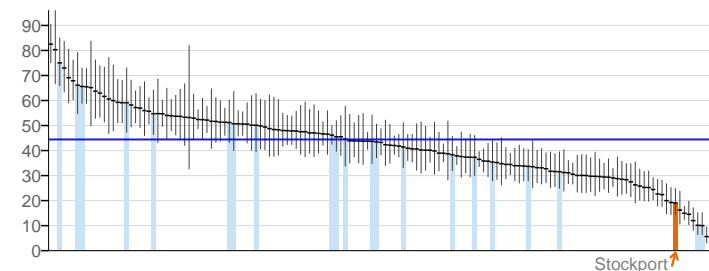
# Stockport

## Healthcare and premature mortality

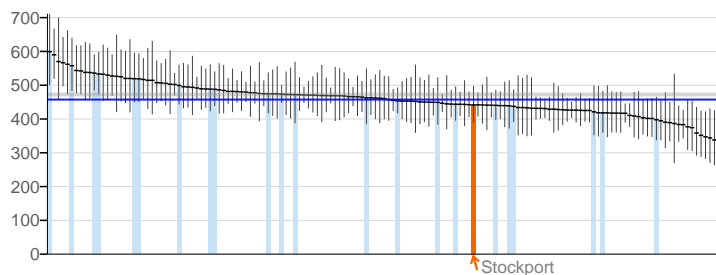
4.12iii. Preventable sight loss - diabetic eye disease



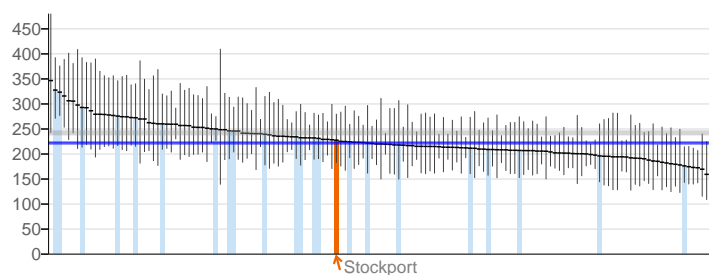
4.12iv. Preventable sight loss - sight loss certifications



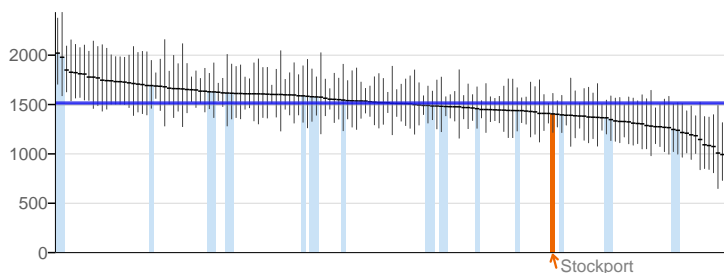
4.14i. Hip fractures in people aged 65 and over



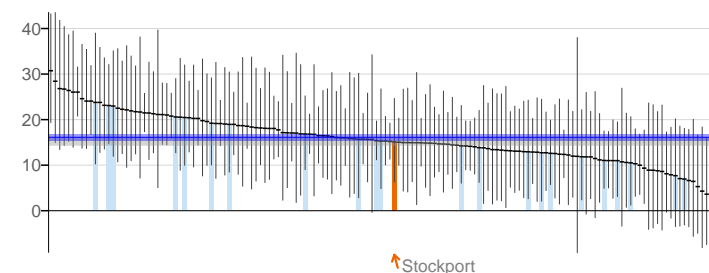
4.14ii. Hip fractures in people aged 65 and over - aged 65-79



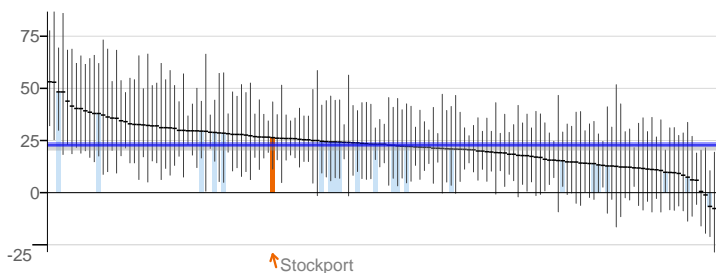
4.14iii. Hip fractures in people aged 65 and over - aged 80+



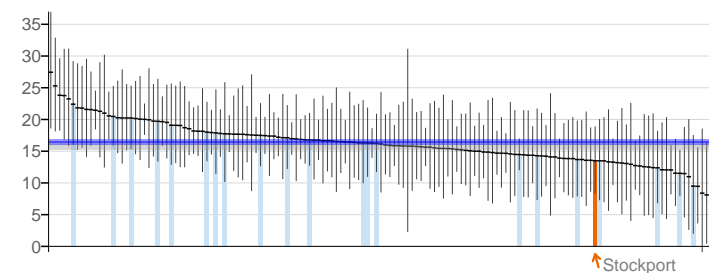
4.15i. Excess Winter Deaths Index (Single year, all ages)



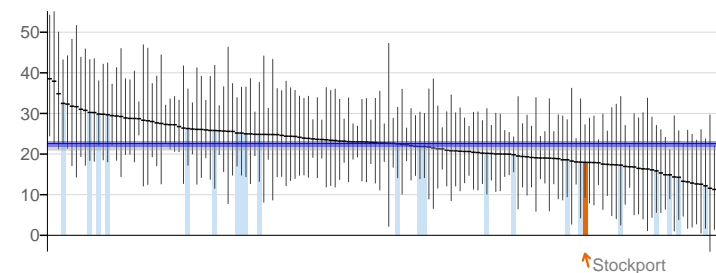
4.15ii. Excess Winter Deaths Index (single year, ages 85+)



4.15iii. Excess Winter Deaths Index (3 years, all ages)



4.15iv. Excess Winter Deaths Index (3 years, ages 85+)



### Key

— England value and confidence interval

↑ Stockport

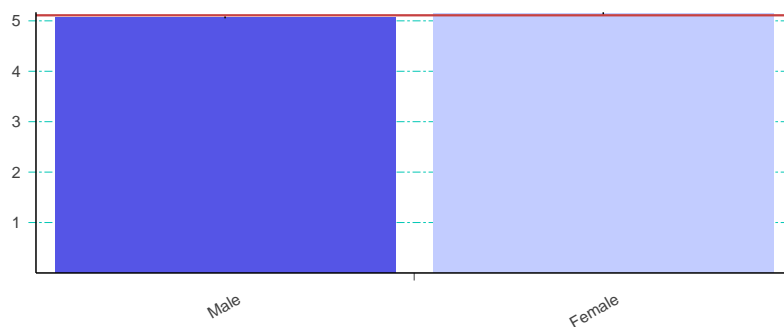
— Other local authorities in North West

# Inequalities

The Public Health Outcomes Framework focuses the whole system on achieving positive health outcomes for the population and reducing inequalities in health. The majority of indicators in this framework have the potential to impact on inequalities and we aspire to make it possible for all indicators to be disaggregated by equalities characteristics and by socioeconomic analysis wherever possible in order to support work locally to reduce in-area health inequalities where these persist. However, in this first publication, as well as breaking down some of the local authority level indicators by gender or age, we are also presenting data by equalities characteristics for a small number of indicators at national level only. These indicators are presented in this section.

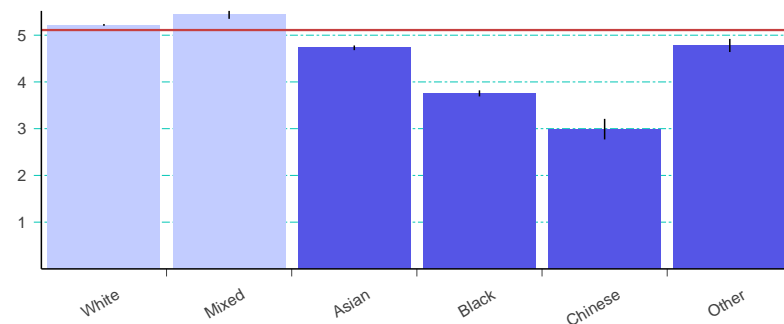
## 1.03 - Pupil absence - by gender England 2011/12

		Value	LCI	UCI
England	—	5.11	5.09	5.12
Male	●	5.07	5.05	5.09
Female	●	5.14	5.12	5.17



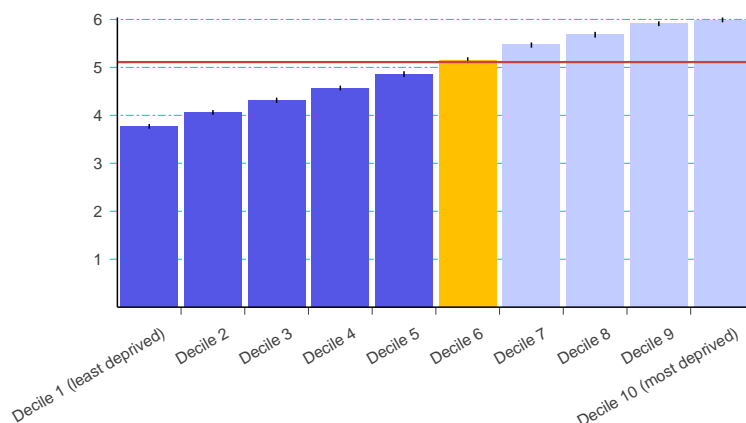
## 1.03 - Pupil absence - by ethnicity England 2011/12

		Value	LCI	UCI
England	—	5.11	5.09	5.12
White	●	5.22	5.20	5.24
Mixed	●	5.44	5.35	5.52
Asian	●	4.73	4.68	4.78
Black	●	3.75	3.69	3.82
Chinese	●	2.98	2.77	3.21
Other	●	4.78	4.64	4.92



## 1.03 - Pupil absence - by deprivation England 2011/12

		Value	LCI	UCI
England	—	5.11	5.09	5.12
Decile 1 (least deprived)	●	3.77	3.72	3.82
Decile 2	●	4.06	4.01	4.11
Decile 3	●	4.32	4.26	4.37
Decile 4	●	4.57	4.52	4.62
Decile 5	●	4.86	4.80	4.92
Decile 6	●	5.15	5.09	5.21
Decile 7	●	5.47	5.41	5.52
Decile 8	●	5.68	5.62	5.74
Decile 9	●	5.91	5.86	5.96
Decile 10 (most deprived)	●	5.99	5.94	6.04

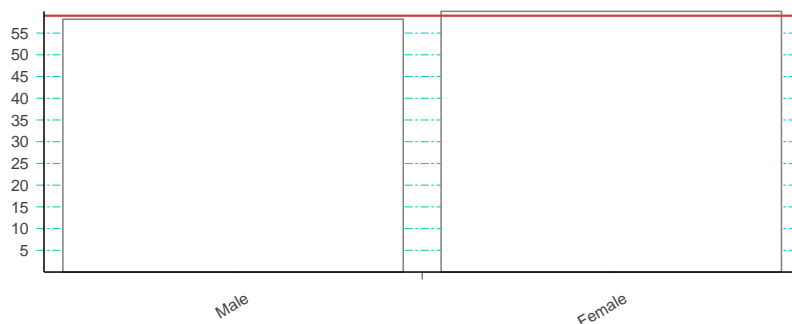


Key: ● Significantly lower ● Similar ● Significantly higher

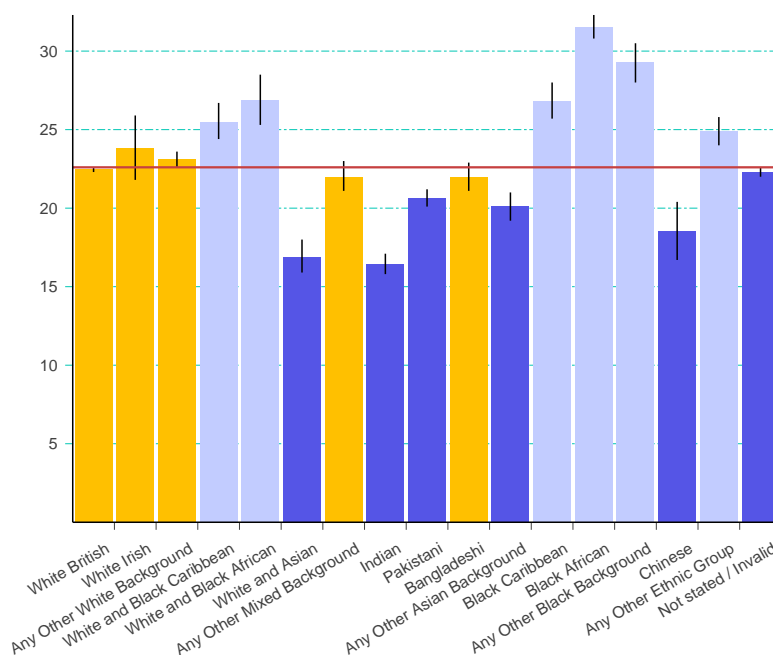
## Stockport

**1.06i - Percentage of all adults with learning disabilities who are known to the council, who are recorded as living in their own home or with their family - by gender England 2011/12**

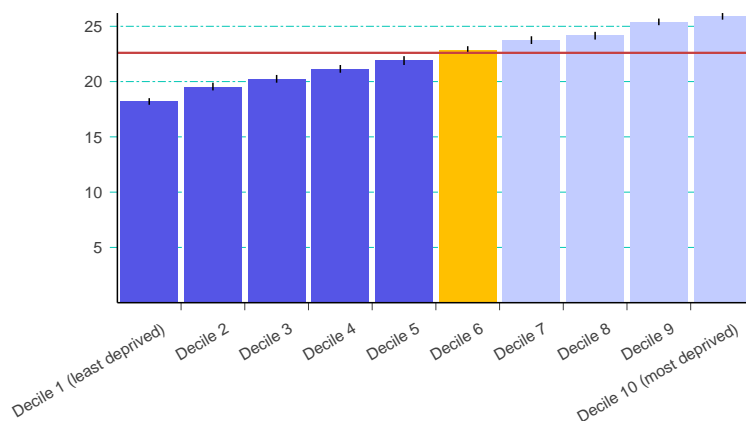
	Value	LCI	UCI
England	59.00	-	-
Male	58.20	-	-
Female	60.00	-	-

**2.06i - Percentage of children aged 4-5 classified as overweight or obese - by ethnicity England 2011/12**

	Value	LCI	UCI
England	22.60	22.50	22.70
White British	22.50	22.30	22.60
White Irish	23.80	21.80	25.90
Any Other White Background	23.10	22.60	23.60
White and Black Caribbean	25.50	24.40	26.70
White and Black African	26.90	25.30	28.50
White and Asian	16.90	15.90	18.00
Any Other Mixed Background	22.00	21.10	23.00
Indian	16.40	15.80	17.10
Pakistani	20.60	20.10	21.20
Bangladeshi	22.00	21.10	22.90
Any Other Asian Background	20.10	19.20	21.00
Black Caribbean	26.80	25.70	28.00
Black African	31.50	30.80	32.30
Any Other Black Background	29.30	28.00	30.50
Chinese	18.50	16.70	20.40
Any Other Ethnic Group	24.90	24.00	25.80
Not stated / Invalid	22.30	22.00	22.60

**2.06i - Percentage of children aged 4-5 classified as overweight or obese - by deprivation England 2011/12**

	Value	LCI	UCI
England	22.60	22.50	22.70
Decile 1 (least deprived)	18.20	17.90	18.50
Decile 2	19.50	19.20	19.90
Decile 3	20.20	19.90	20.60
Decile 4	21.10	20.80	21.50
Decile 5	21.90	21.50	22.30
Decile 6	22.80	22.50	23.20
Decile 7	23.70	23.40	24.10
Decile 8	24.20	23.80	24.50
Decile 9	25.40	25.10	25.70
Decile 10 (most deprived)	25.90	25.60	26.20

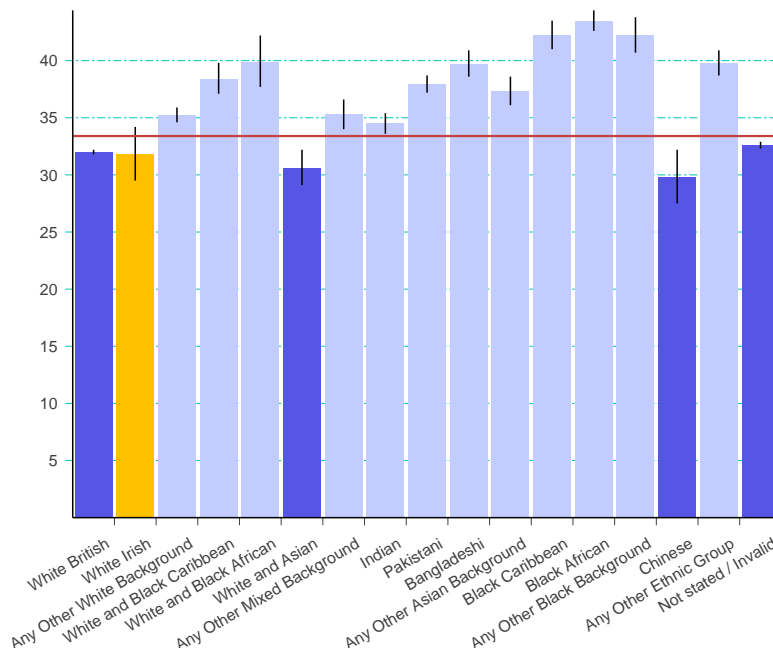


Key: ● Significantly lower ● Similar ● Significantly higher



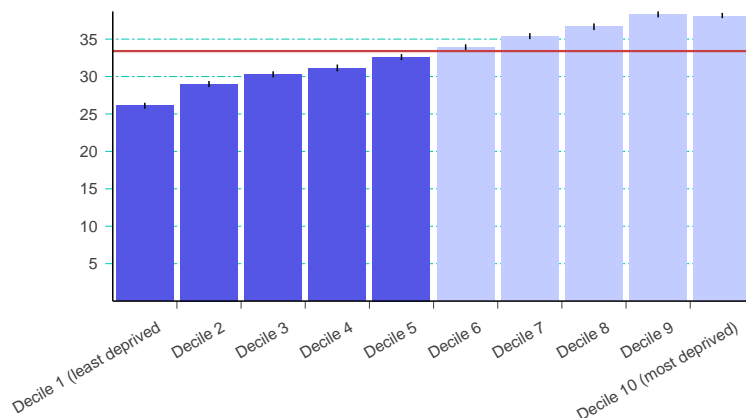
## 2.06ii - Percentage of children aged 10-11 classified as overweight or obese - by ethnicity England 2011/12

		Value	LCI	UCI
England	—	33.40	33.30	33.50
White British	●	32.00	31.80	32.20
White Irish	●	31.80	29.50	34.20
Any Other White Background	●	35.20	34.60	35.90
White and Black Caribbean	●	38.40	37.10	39.80
White and Black African	●	39.90	37.70	42.20
White and Asian	●	30.60	29.10	32.20
Any Other Mixed Background	●	35.30	34.00	36.60
Indian	●	34.50	33.60	35.40
Pakistani	●	37.90	37.20	38.70
Bangladeshi	●	39.70	38.60	40.90
Any Other Asian Background	●	37.30	36.10	38.60
Black Caribbean	●	42.20	41.00	43.50
Black African	●	43.50	42.60	44.40
Any Other Black Background	●	42.20	40.70	43.80
Chinese	●	29.80	27.50	32.20
Any Other Ethnic Group	●	39.80	38.70	40.90
Not stated / Invalid	●	32.60	32.30	32.90



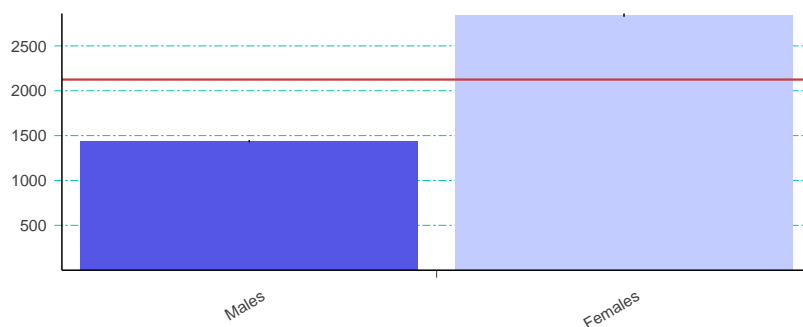
## 2.06ii - Percentage of children aged 10-11 classified as overweight or obese - by deprivation England 2011/12

		Value	LCI	UCI
England	—	33.40	33.30	33.50
Decile 1 (least deprived)	●	26.10	25.70	26.50
Decile 2	●	29.00	28.60	29.40
Decile 3	●	30.30	29.90	30.70
Decile 4	●	31.10	30.70	31.60
Decile 5	●	32.60	32.20	33.00
Decile 6	●	33.90	33.40	34.30
Decile 7	●	35.40	35.00	35.80
Decile 8	●	36.70	36.20	37.10
Decile 9	●	38.30	37.90	38.70
Decile 10 (most deprived)	●	38.10	37.80	38.50



## 3.02 - Chlamydia diagnosis (15-24 year olds) - by gender England 2011

		Value	LCI	UCI
England	—	2,125	2,114	2,136
Males	●	1,438	1,425	1,450
Females	●	2,843	2,825	2,861



Key: ● Significantly lower ● Similar ● Significantly higher

# Definitions

## Overarching indicators

**0.1i** - Healthy life expectancy at birth: the average number of years a person would expect to live in good health based on contemporary mortality rates and prevalence of self-reported good health. **0.1ii** - Life expectancy at birth: the average number of years a person would expect to live based on contemporary mortality rates. **0.2i** - Slope index of inequality in life expectancy at birth based on national deprivation deciles within England: the range in years of life expectancy across the social gradient, from most to least deprived. **0.2iii** - Slope index of inequality in life expectancy at birth within English local authorities, based on local deprivation deciles: the range in years of life expectancy across the social gradient within each local authority, from most to least deprived. **0.2iv** - The gap in years between overall life expectancy at birth in each English local authority and life expectancy at birth for England as a whole.

## Wider determinants of health

**1.01i** - Percentage of all dependent children under 20 in relative poverty (living in households where income is less than 60 per cent of median household income before housing costs) **1.01ii** - % of children in low income families (children living in families in receipt of out of work benefits or tax credits where their reported income is < 60% median income) for u-16s only **1.02i** - School Readiness: All children achieving a good level of development at the end of reception as a percentage of all eligible children. **1.02ii** - School Readiness: All children achieving a good level of development at the end of reception as a percentage of all eligible children by free school meal status **1.02iii** - School Readiness: Year 1 pupils achieving the expected level in the phonics screening check as a percentage of all eligible pupils **1.02iv** - School Readiness: The percentage of Year 1 pupils with free school meal status achieving the expected level in the phonics screening check **1.03** - % of half days missed by pupils due to overall absence (incl. authorised and unauthorised absence) **1.04** - Rate of 10-17 year olds receiving their first reprimand, warning or conviction per 100,000 population **1.05** - % of 16-18 year olds not in education, employment or training (NEET) **1.06i** - % of adults with a learning disability who are known to the council, who are recorded as living in their own home or with their family **1.06ii** - % of adults (age 18-69) who are receiving secondary mental health services on the Care Programme Approach recorded as living independently, with or without support. **1.08i** - % point gap in the employment rate between those with a long-term health condition and the overall employment rate **1.08ii** - % point gap in the employment rate between those with a learning disability and the overall employment rate **1.08iii** - The percentage point gap between the percentage of working age adults who are receiving secondary mental health services and who are on the Care Programme Approach recorded as being employed (aged 18 to 69) and the percentage of all respondents in the Labour Force Survey classed as employed (aged 16 to 64) **1.09i** - % of employees who had at least one day off due to sickness absence in the previous working week **1.09ii** - % of working days lost due to sickness absence in the previous working week **1.10** - Rate of people KSI on the roads, all ages, per 100,000 resident population **1.11** - Rate of domestic abuse incidents recorded by the police per 1,000 population **1.12i** - Age-standardised rate of emergency hospital admissions for violence per 100,000 population **1.12ii** - Crude rate of violence against the person offences per 1,000 population **1.12iii** - Crude rate of sexual offences per 1,000 population **1.13i** - % of offenders who re-offend from a rolling 12 month cohort **1.13ii** - Average no. of re-offences committed per offender from a rolling 12 month cohort **1.14i** - No. of complaints per year per LA about noise per thousand population **1.14ii** - The percentage of the population exposed to road, rail and air transport noise of 65 dB(A) or more, LAeq,16h per local authority (16h is the period 0700 – 2300) according to the results of the strategic noise mapping carried out as required by the Environmental Noise (England) Regulations 2006, as amended. **1.14iii** - The percentage of the population exposed to road, rail and air transport noise of 55 dB(A) or more, Lnight (LAeq,8h) per local authority (8h is the period 2300 – 0700) according to the results of the strategic noise mapping carried out as required by the Environmental Noise (England) Regulations 2006, as amended. **1.15i** - Homelessness acceptances per 1,000 households **1.15ii** - Households in temporary accommodation per 1,000 households **1.16** - % of people using outdoor space for exercise/health reasons **1.17** - The percentage of households that experience fuel poverty based on the "Low income, high cost" methodology **1.18i** - % of adult social care users who have as much social contact as they would like according to the Adult Social Care Users Survey **1.18ii** - The percentage of adult carers who have as much social contact as they would like according to the Personal Social Services Carers survey

## Health improvement

**2.01** - % of all live births at term with low birth weight **2.02i** - % of all mothers who breastfeed their babies in the first 48hrs after delivery **2.02ii** - % of all infants due a 6-8 week check that are totally or partially breastfed **2.03** - % of women who smoke at time of delivery **2.04** - Rate of conceptions per 1,000 females aged 15-17 **2.04i** - Rate of conceptions per 1,000 females aged 13-15 **2.06i** - % of children aged 4-5 classified as overweight or obese **2.06ii** - % of children aged 10-11 classified as overweight or obese **2.07i** - Rate of hospital admissions caused by unintentional and deliberate injuries in children aged 0-14 years per 10,000 resident population **2.07ii** - Rate of hospital admissions caused by unintentional and deliberate injuries in young people aged 15-24 per 10,000 resident population **2.08** - Average difficulties score for all looked after children aged 4-16 who have been in care for at least 12 months on 31st March **2.12** - Percentage of adults classified as overweight or obese **2.13i** - Percentage of adults achieving at least 150 minutes of physical activity per week in accordance with UK CMO recommended guidelines on physical activity. **2.13ii** - The percentage of adults classified as "inactive" **2.14** - Prevalence of smoking among persons aged 18 years and over **2.14i** - Prevalence of smoking among persons aged 18 years and over - routine and manual **2.15i** - % of opiate drug users that left drug treatment successfully who do not re-present to treatment within 6 months **2.15ii** - % of non-opiate drug users that left treatment successfully who do not re-present to treatment within 6 months **2.17** - % of QOF-recorded cases of diabetes registered with GP practices aged 17+ **2.20i** - % of eligible women screened adequately within the previous 3 years on 31st March **2.20ii** - % of eligible women screened adequately within the previous 3.5 or 5.5 years (according to age) on 31st March **2.21vii** - % of those offered diabetic eye screening who attend a digital screening event **2.22i** - % of eligible population aged 40-74 offered an NHS Health Check **2.22ii** - % of eligible population aged 40-74 offered an NHS Health Check who received an NHS Health Check **2.23i** - % of respondents scoring 0-4 to the question "Overall, how satisfied are you with your life nowadays?" **2.23ii** - % of respondents scoring 0-4 to the question "Overall, to what extent do you feel the things you do in your life are worthwhile?" **2.23iii** - % of respondents scoring 0-4 to the question "Overall, how happy did you feel yesterday?" **2.23iv** - % of respondents scoring 6-10 to the question "Overall, how anxious did you feel yesterday?" **2.24i** - Age-sex standardised rate of emergency hospital admissions for injuries due to falls in persons aged 65+ per 100,000 population **2.24ii** - Age-sex standardised rate of emergency hospital admissions for injuries due to falls in males/females aged 65+ per 100,000 population **2.24iii** - Age-sex standardised rate of emergency hospital admissions for injuries due to falls in persons aged 65-79 per 100,000 population **2.24iiii** - Age-sex standardised rate of emergency hospital admissions for injuries due to falls in persons aged 80+ per 100,000 population

## Health protection

**3.01-** Fraction of all-cause adult mortality attributable to long-term exposure to current levels of anthropogenic particulate air pollution **3.02i-** Crude rate of chlamydia diagnoses per 100,000 young adults aged 15-24 using old NCSP data **3.02ii-** Crude rate of chlamydia diagnoses per 100,000 young adults aged 15-24 using CTAD data **3.03i-** % of eligible children who received 4 doses of Hepatitis B vaccine at any time by their 1st birthday **3.03i-** % of eligible children who received 4 doses of Hepatitis B vaccine at any time by their 2nd birthday **3.03iii-** % of eligible children who received 3 doses of Dtap / IPV / Hib vaccine at any time by their 1st birthday **3.03iii-** % of eligible children who received 3 doses of Dtap / IPV / Hib vaccine at any time by their 2nd birthday **3.03iv-** % of eligible children who have received the completed course of Men C vaccine by their 1st birthday **3.03v-** % of eligible children who have received the complete course of PCV vaccine by their 1st birthday **3.03vi-** % of eligible children who have received one booster dose of Hib/Men C vaccine by their 2nd birthday **3.03vi-** % of eligible children who have received one booster dose of Hib/Men C vaccine by their 5th birthday **3.03vii-** % of eligible children who have received one booster dose of PCV vaccine by their 2nd birthday **3.03viii-** % of eligible children who have received one dose of MMR vaccine on or after their 1st birthday and anytime up to their 2nd birthday **3.03ix-** % of eligible children who have received one dose of MMR vaccine on or after their 1st birthday and at any time up to their 5th birthday **3.03x-** % of eligible children who have received two doses of MMR vaccine on or after their 1st birthday and at any time up to their 5th birthday **3.03xii-** % of girls aged 12-13 who have received all 3 doses of the HPV vaccine **3.03xiii-** % of eligible adults aged 65+ who have received the PPV vaccine **3.03xiv-** % of eligible adults aged 65+ who have received the flu vaccine **3.03xv-** % of at risk individuals aged 6 months to 65 years (excluding pregnant women) who have received the flu vaccine **3.04-** % of adults (aged 15+) newly diagnosed with HIV with a CD4 count <350 cells per mm<sup>3</sup> **3.05i-** % of people completing treatment for TB within 12 months prior to 31st December **3.05ii-** Rate of reported new cases of TB per year per 100,000 population **3.06-** % of NHS organisations with a board approved sustainable development management plan

## Healthcare and premature mortality

**4.01-** Rate of deaths in infants aged under 1 year per 1,000 live births **4.02-** Mean severity of tooth decay in children aged five years based on the mean number of teeth per child sampled which were either actively decayed or had been filled or extracted – decayed/missing/filled teeth (d3mft) **4.03-** Age-standardised rate of mortality from causes considered preventable per 100,000 population **4.04i-** Age-standardised rate of mortality from all cardiovascular diseases (including heart disease and stroke) in persons less than 75 years of age per 100,000 population **4.04ii-** Age-standardised rate of mortality considered preventable from all cardiovascular diseases (incl. heart disease and stroke) in those aged <75 per 100,000 population **4.05i-** Age-standardised rate of mortality from all cancers in persons less than 75 years of age per 100,000 population **4.05ii-** Age-standardised rate of mortality considered preventable from all cancers in those aged <75 per 100,000 population **4.06i-** Age-standardised rate of mortality from liver disease in persons less than 75 years of age per 100,000 population **4.06ii-** Age-standardised rate of mortality considered preventable from liver disease in those aged <75 per 100,000 population **4.07i-** Age-standardised rate of mortality from respiratory disease in persons less than 75 years per 100,000 population **4.07ii-** Age-standardised rate of mortality considered preventable from respiratory disease in those aged <75 per 100,000 population **4.08-** Age-standardised rate of mortality from communicable diseases per 100,000 population **4.10-** Age-standardised mortality rate from suicide and injury of undetermined intent per 100,000 population **4.11-** Indirectly standardised % of emergency admissions to any hospital within 30 days of the previous discharge from hospital **4.12i-** Crude rate of sight loss due to age related macular degeneration (AMD) in those aged 65+ per 100,000 population **4.12ii-** Crude rate of sight loss due to glaucoma in those aged 40+ per 100,000 population **4.12iii-** Crude rate of sight loss due to diabetic eye disease in those aged 12+ per 100,000 population **4.12iv-** Crude rate of sight loss certifications per 100,000 population **4.14i-** Age-sex standardised rate of emergency admissions for fractured neck of femur in those aged 65+ per 100,000 population **4.14ii-** Age-sex standardised rate of emergency admissions for fractured neck of femur in those aged 65-79 per 100,000 population **4.14iii-** Age-sex standardised rate of emergency admissions for fractured neck of femur in those aged 80+ per 100,000 population **4.15i-** Excess Winter Deaths Index (Single year, all ages) **4.15ii-** Excess Winter Deaths Index (single year, age 85+) **4.15iii-** Excess Winter Deaths Index (3 years, all ages) **4.15iv-** Excess Winter Deaths Index (3 years, age 85+)

## Notes

- \* Disclosure control applied
- ^ Value estimated
- x Value Missing
- \$ Data quality note