



# Stockport JSNA

joint strategic needs assessment



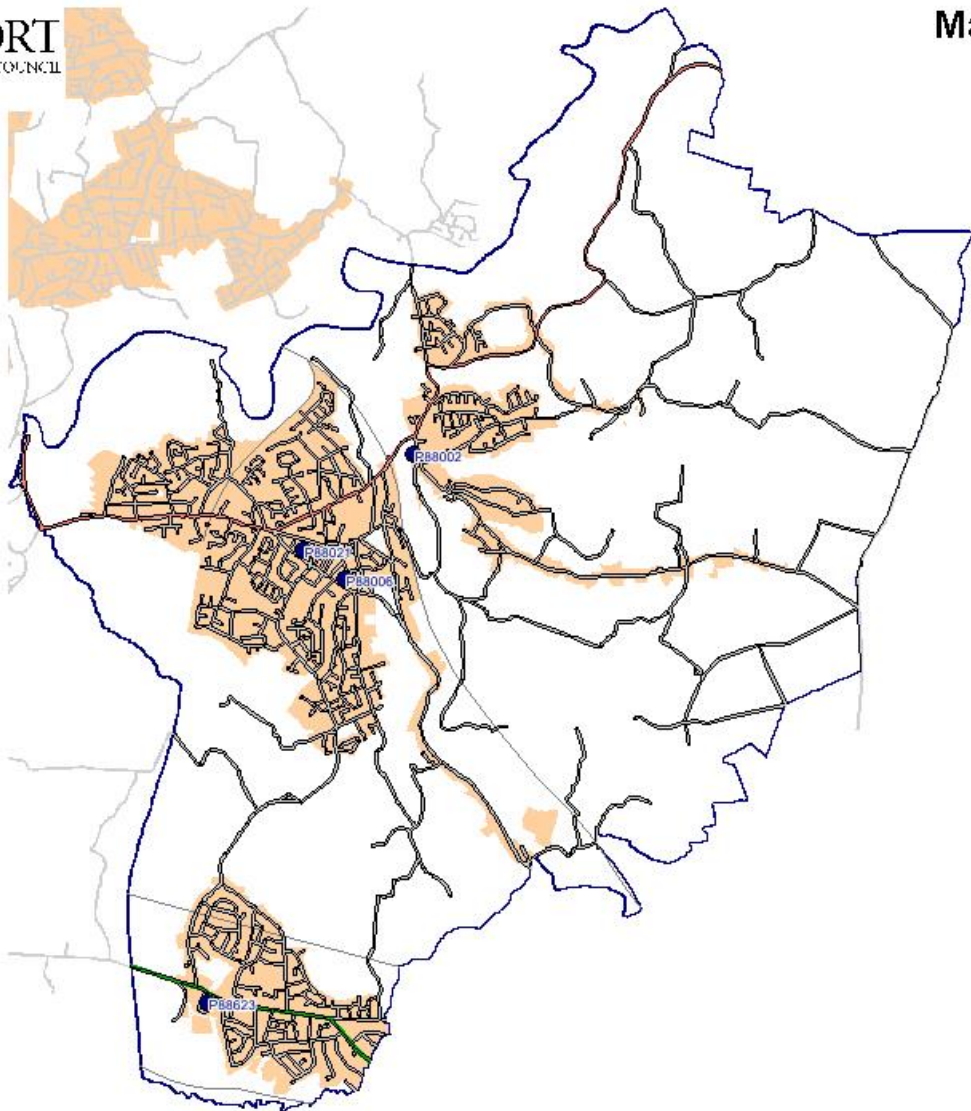
## Marple Neighbourhood

Headline Profile

October 2015



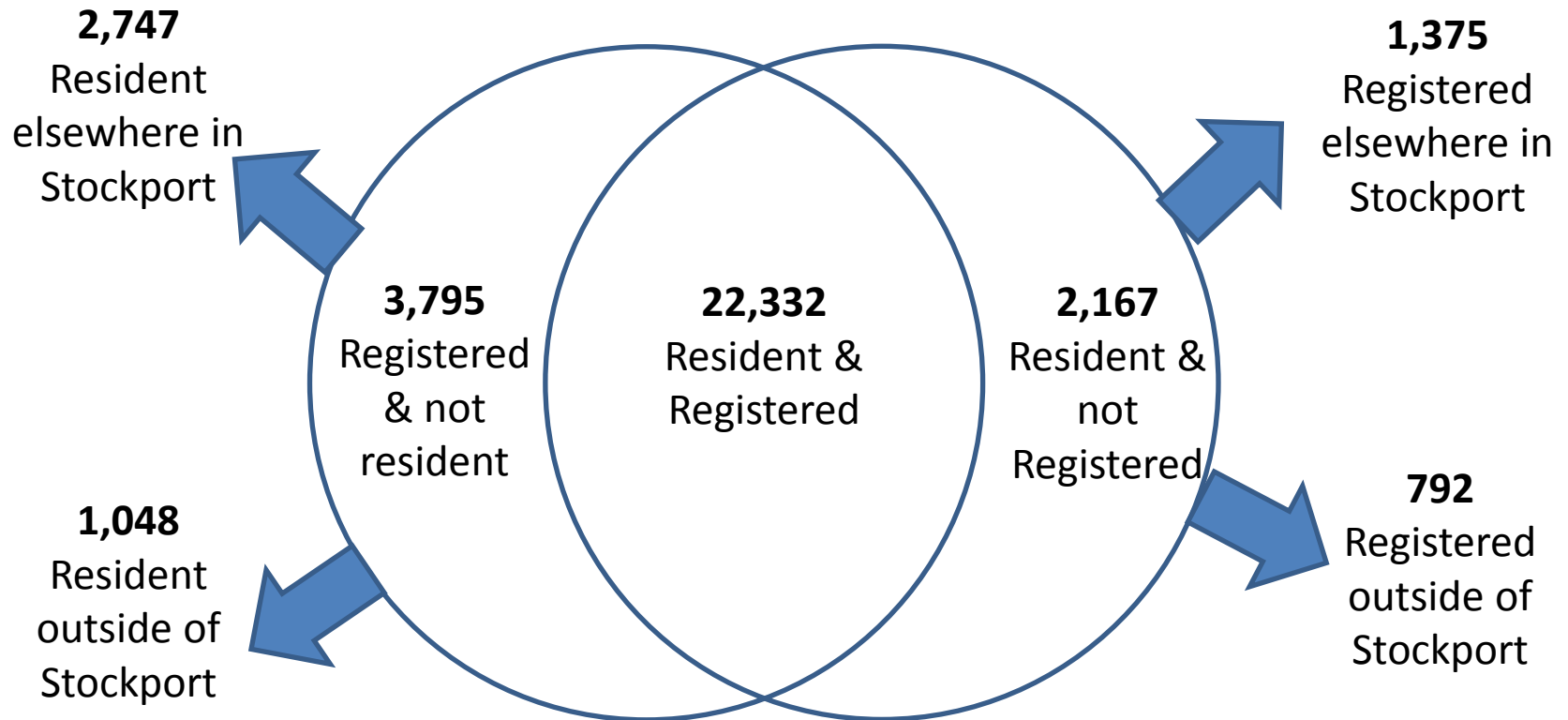
## Marple Neighbourhood



	Urban area
	GP Practice
	Branch surgery
	M60
	A6
	A34
	Other A-Roads
	B-Roads & other roads

1 cm = 0.1729 km

- 24,499 residents (HSCIC)
- 26,127 registered with GPs in area (HSCIC)



- 22,850 residents (ONS)
- 26,130 registered (PCIS)

Resident age profile			
Age Group	Number of people	% of people	Stockport %
0 - 4	1,038	4.5%	6.2%
5 - 19	3,630	15.9%	17.4%
20 - 64	11,983	52.4%	57.3%
65 - 84	5,392	23.6%	16.6%
85+	807	3.5%	2.5%
<b>TOTAL</b>	<b>22,850</b>	-	-
<b>65+</b>	<b>6,199</b>	<b>27.1%</b>	<b>19.1%</b>

Registered age profile			
Age Group	Number of people	% of people	Stockport %
0 - 4	1,237	4.7%	5.9%
5 - 19	3,918	15.0%	16.7%
20 - 64	14,244	54.5%	58.7%
65 - 84	5,895	22.6%	16.2%
85+	836	3.2%	2.5%
<b>TOTAL</b>	<b>26,130</b>	-	-
<b>65+</b>	<b>6,731</b>	<b>25.8%</b>	<b>18.6%</b>

- LTC status for registered population:

	0-64	65+	Total
Not on long term condition register	13,324 – 68.6%	1,784 – 26.5%	15,108 – 57.8%
On at least 1 LTC register	6,096 – 31.4%	4,944 – 73.5%	11,040 – 42.2%

- Disease register counts for registered population:

	0-64	65+	Total	% aged 65+	DSR	Stockport DSR
Hypertension	1,166	2,916	4,082	71.4%	12,679.9	14,730.6
CHD	195	1,011	1,206	83.8%	3,638.0	4,180.2
Stroke / TIA	105	586	691	84.8%	2,101.3	2,114.7
Asthma	1,335	565	1,900	29.7%	7,126.3	6,589.2
COPD	106	406	512	79.3%	1,562.2	2,366.9
CKD	56	682	738	92.4%	2,196.6	2,602.7
Diabetes	393	740	1,133	65.3%	3,602.2	4,996.7
Epilepsy	136	63	199	31.7%	723.4	790.4
Mental Health (QoF)	106	59	165	35.8%	601.3	807.7
Depression	1,901	552	2,453	22.5%	9,410.4	8,643.0
Anxiety	2,555	1,022	3,577	28.6%	13,371.8	13,275.7
Dementia	15	302	317	95.3%	944.4	913.1
Glaucoma	22	213	235	90.6%	702.1	849.4
AMD	4	147	151	97.4%	446.3	481.0
History of fall	381	492	873	56.4%	2,979.9	3,801.4
Cancer diagnosed since 2003	287	603	890	67.8%	2,804.9	2,705.4

< 20% lower than Stockport average

> 10% higher than Stockport average

- **Cancer screening for registered population:**

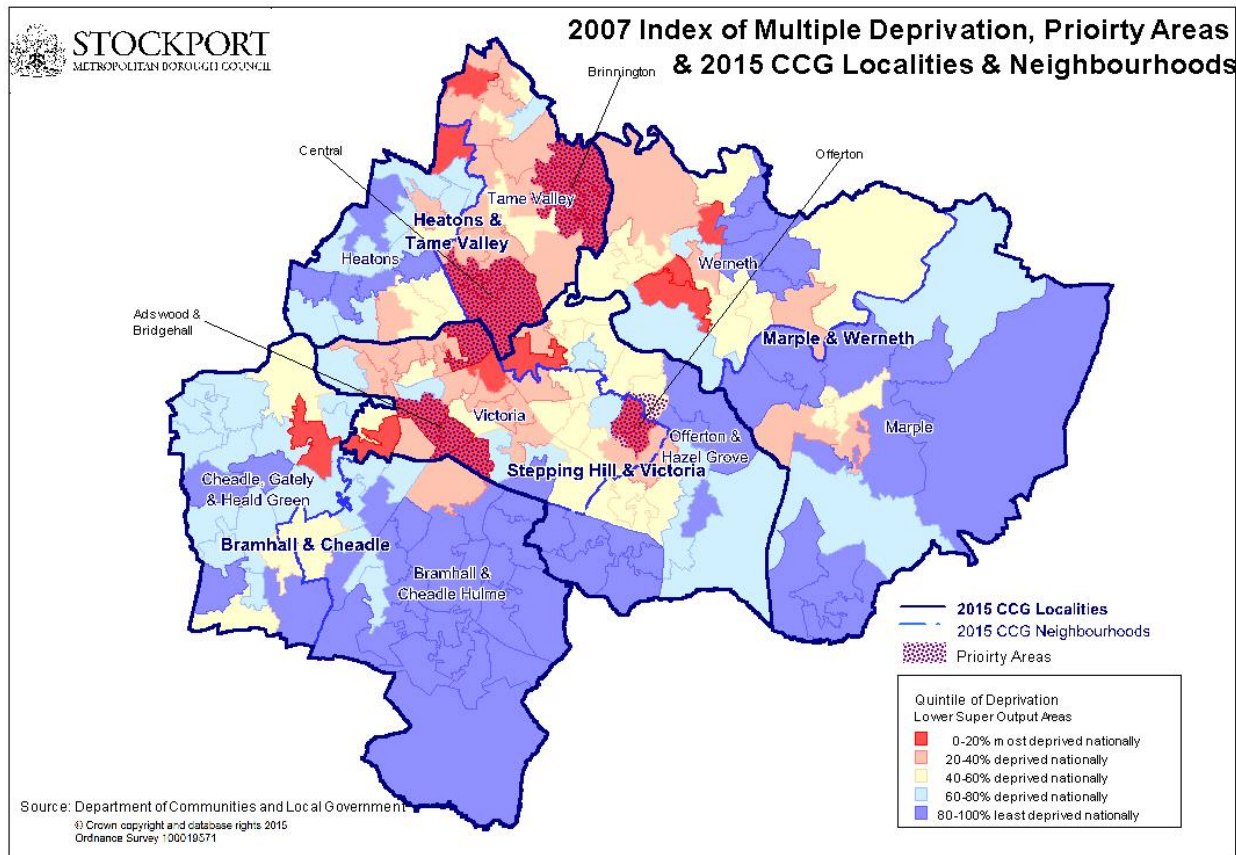
	Neighbourhood	Stockport
Breast cancer (50-70)	74.4%	70.5%
Cervical cancer	83.8%	79.9%
Bowel cancer	61.2%	54.3%

- **Immunisations for registered population:**

	Neighbourhood	Stockport
2 years - Dip	96.0%	96.0%
2 years - Hib	94.0%	91.7%
2 years - MMR1	90.4%	91.3%
2 years - PCV	94.4%	91.9%
5 years - DipB	93.5%	91.5%
5 years - MMR2	91.8%	91.4%
65+ - Influenza	81.7%	80.1%

- Deprivation profile of residents:

	Most deprived quintile	Second most deprived quintile	Mid deprived quintile	Second least deprived quintile	Least deprived quintile
Neighbourhood	0.0%	13.4%	11.7%	12.6%	62.2%
Stockport	12.3%	18.1%	20.0%	21.7%	27.8%



- Average life expectancy of residents:

	Neighbourhood		Stockport	
	At birth	At 65	At birth	At 65
Males	81.1 years	19.3 years	79.9 years	19.4 years
Females	83.0 years	21.2 years	83.0 years	21.1 years

- Lifestyles of adult residents:

	Neighbourhood	Stockport
Smokers	11.2%	16.9%
Unhealthy drinkers	28.2%	26.1%
Low mental wellbeing	8.9%	12.2%
Obesity <i>(underestimate as self reported)</i>	12.0%	16.2%
Not physically active enough	72.2%	73.6%
Eat 5 a day	21.7%	17.9%