



STOCKPORT
METROPOLITAN BOROUGH COUNCIL

Stockport
Primary Care Trust



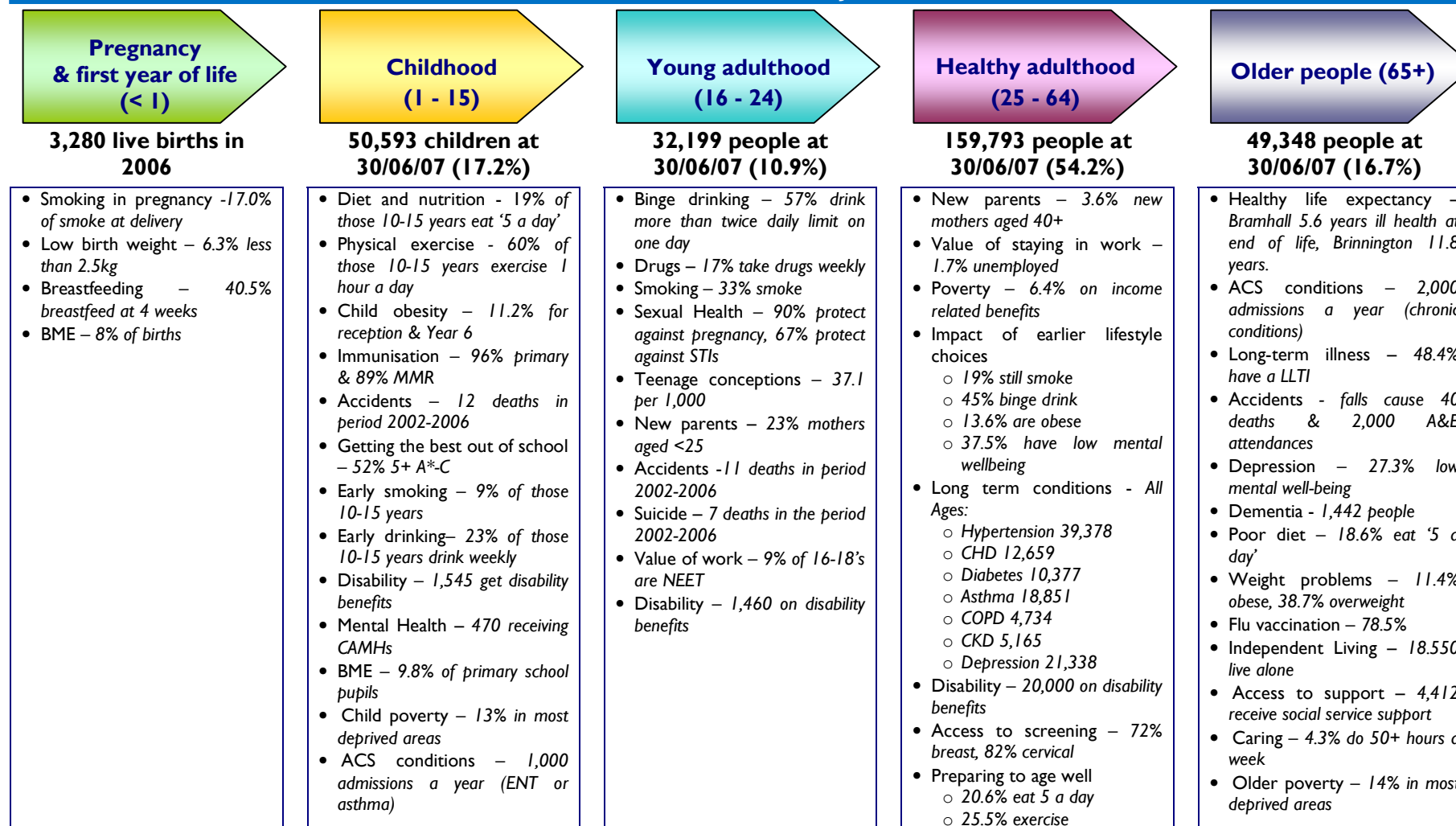
Stockport JSNA

joint strategic needs assessment

JSNA - Life Course Summary Stockport

June 2008

CHALLENGES TO STAYING HEALTHY – JSNA FOR STOCKPORT



TOTAL POPULATION = 294,855 (GP Registered at 30/06/07)