



Stockport JSNA

joint strategic needs assessment

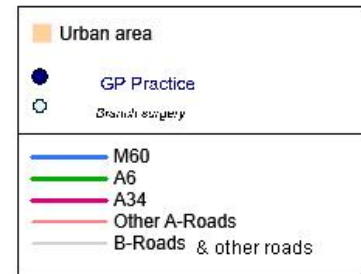
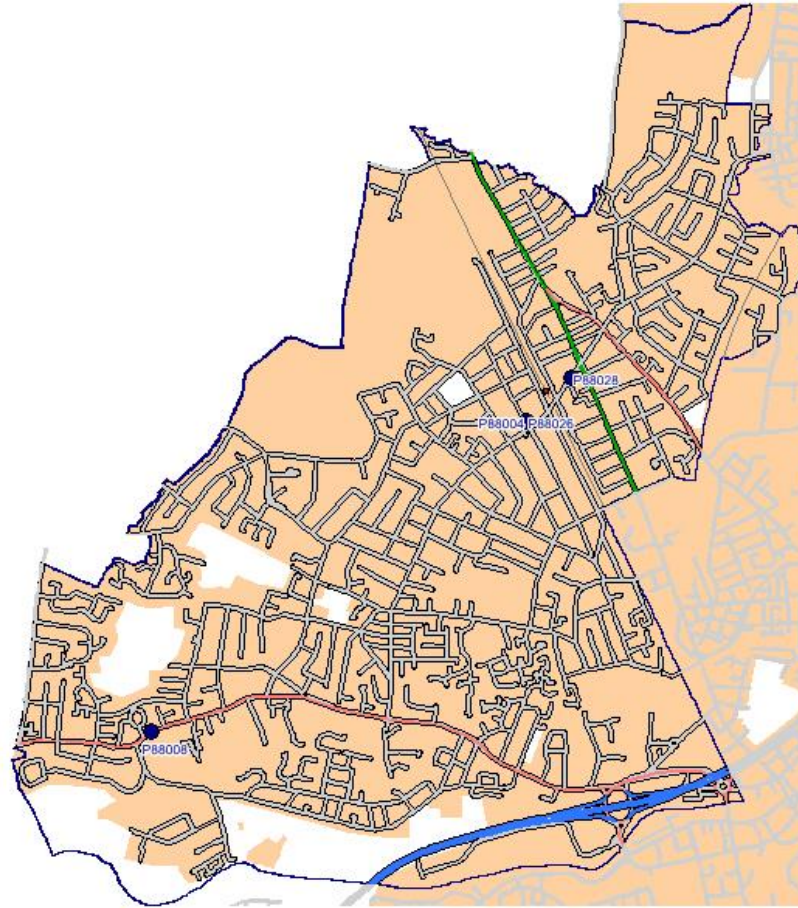


Heatons Neighbourhood

Headline Profile

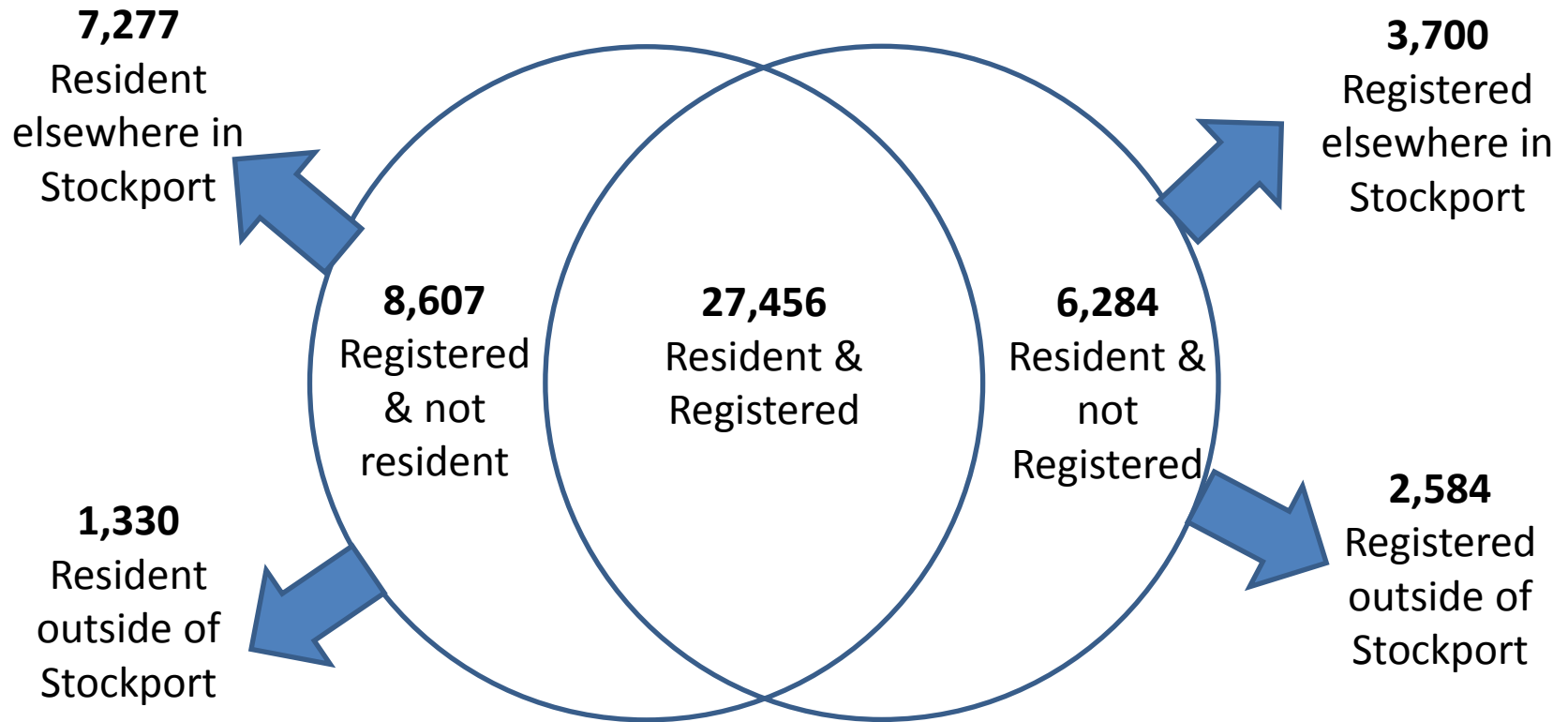
October 2015

Heatons Neighbourhood



1 cm = 0.1729km

- 33,740 residents (HSCIC)
- 36,063 registered with GPs in area (HSCIC)



- 31,183 residents (ONS)
- 36,094 registered (PCIS)

Resident age profile			
Age Group	Number of people	% of people	Stockport %
0 - 4	1,969	6.3%	6.2%
5 - 19	5,314	17.0%	17.4%
20 - 64	18,715	60.0%	57.3%
65 - 84	4,413	14.2%	16.6%
85+	772	2.5%	2.5%
TOTAL	31,183	-	-
65+	5,185	16.6%	19.1%

Registered age profile			
Age Group	Number of people	% of people	Stockport %
0 - 4	2,251	6.2%	5.9%
5 - 19	5,847	16.2%	16.7%
20 - 64	22,369	62.0%	58.7%
65 - 84	4,769	13.2%	16.2%
85+	858	2.4%	2.5%
TOTAL	36,094	-	-
65+	5,627	15.6%	18.6%

- LTC status for registered population:

	0-64	65+	Total
Not on long term condition register	21,885 – 71.8%	1,369 – 24.3%	23,254 – 64.4%
On at least 1 LTC register	8,592 – 28.2%	4,265 – 75.7%	12,857 – 35.6%

- Disease register counts for registered population:

	0-64	65+	Total	% aged 65+	DSR	Stockport DSR
Hypertension	1,901	2,757	4,658	59.2%	14,811.2	14,730.6
CHD	242	856	1,098	78.0%	3,647.8	4,180.2
Stroke / TIA	134	470	604	77.8%	1,968.0	2,114.7
Asthma	2,001	474	2,475	19.2%	7,021.2	6,589.2
COPD	181	484	665	72.8%	2,195.3	2,366.9
CKD	92	809	901	89.8%	2,985.3	2,602.7
Diabetes	686	733	1,419	51.7%	4,461.1	4,996.7
Epilepsy	186	63	249	25.3%	714.8	790.4
Mental Health (QoF)	240	76	316	24.1%	905.7	807.7
Depression	2,305	342	2,647	12.9%	7,235.3	8,643.0
Anxiety	3,131	636	3,767	16.9%	10,450.8	13,275.7
Dementia	10	332	342	97.1%	1,129.3	913.1
Glaucoma	41	186	227	81.9%	739.3	849.4
AMD	10	127	137	92.7%	446.4	481.0
History of fall	525	490	1,015	48.3%	3,049.4	3,801.4
Cancer diagnosed since 2003	405	517	922	56.1%	2,918.2	2,705.4

< 20% lower than Stockport average

> 10% higher than Stockport average

- **Cancer screening for registered population:**

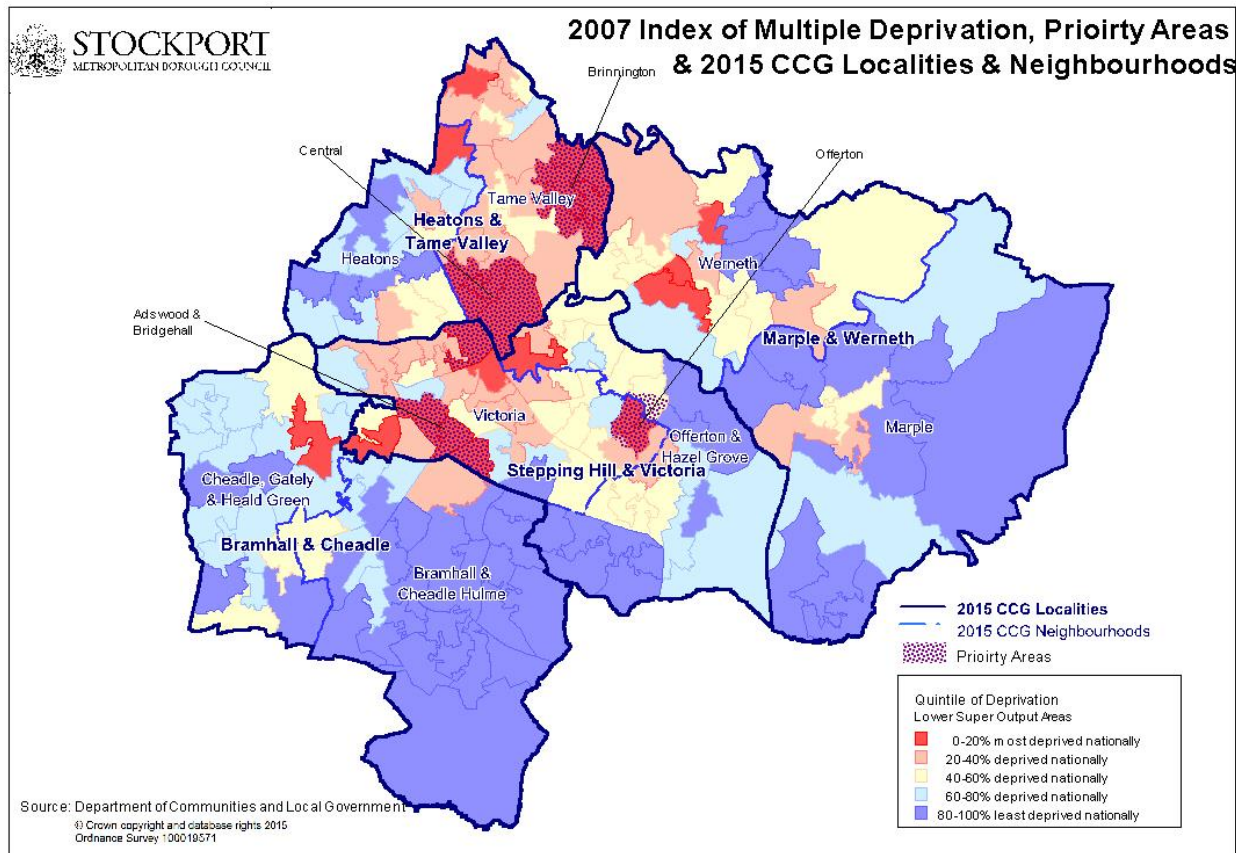
	Neighbourhood	Stockport
Breast cancer (50-70)	71.8%	70.5%
Cervical cancer	78.9%	79.9%
Bowel cancer	54.0%	54.3%

- **Immunisations for registered population:**

	Neighbourhood	Stockport
2 years - Dip	96.8%	96.0%
2 years - Hib	93.6%	91.7%
2 years - MMR1	93.4%	91.3%
2 years - PCV	94.0%	91.9%
5 years - DipB	90.7%	91.5%
5 years - MMR2	90.2%	91.4%
65+ - Influenza	78.1%	80.1%

- Deprivation profile of residents:

	Most deprived quintile	Second most deprived quintile	Mid deprived quintile	Second least deprived quintile	Least deprived quintile
Neighbourhood	5.0%	10.8%	15.5%	43.7%	25.1%
Stockport	12.3%	18.1%	20.0%	21.7%	27.8%



- Average life expectancy of residents:

	Neighbourhood		Stockport	
	At birth	At 65	At birth	At 65
Males	80.1 years	18.9 years	79.9 years	19.4 years
Females	84.3 years	21.8years	83.0 years	21.1 years

- Lifestyles of adult residents:

	Neighbourhood	Stockport
Smokers	13.0%	16.9%
Unhealthy drinkers	27.4%	26.1%
Low mental wellbeing	12.0%	12.2%
Obesity <i>(underestimate as self reported)</i>	12.4%	16.2%
Not physically active enough	72.7%	73.6%
Eat 5 a day	20.8%	17.9%