



Stockport JSNA

joint strategic needs assessment



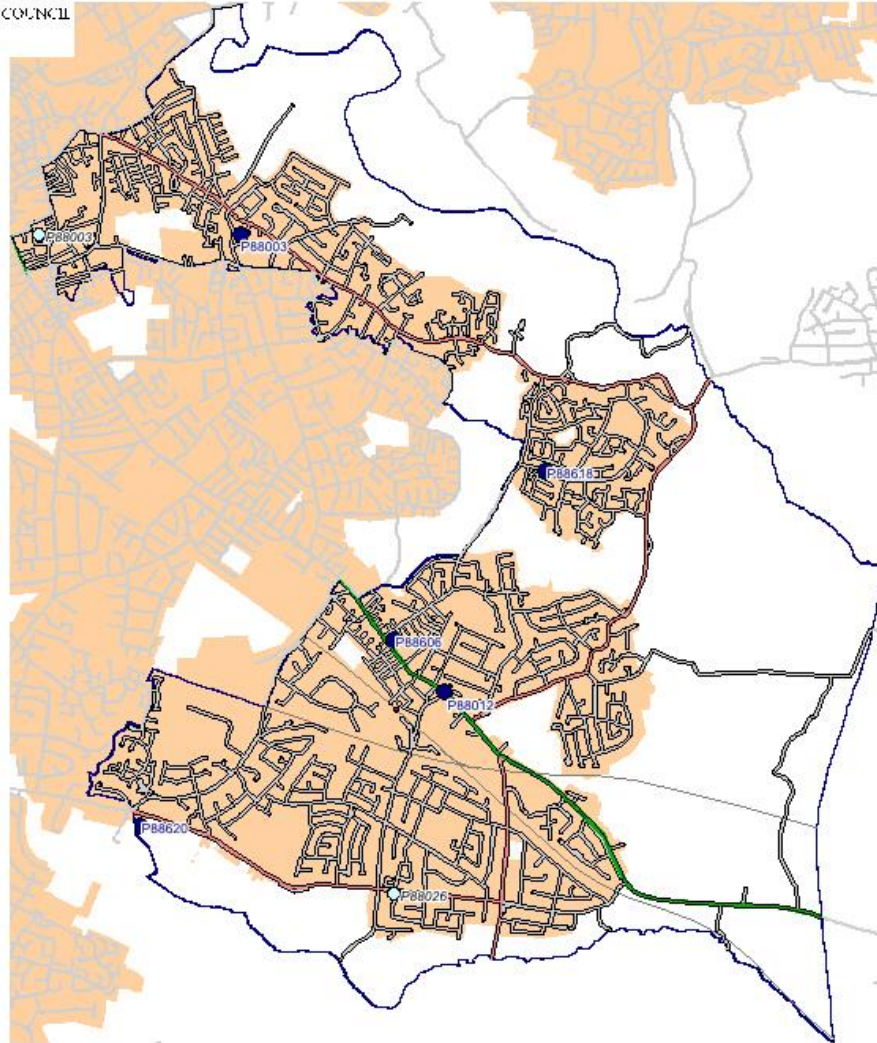
Hazel Grove & Offerton Neighbourhood

Headline Profile

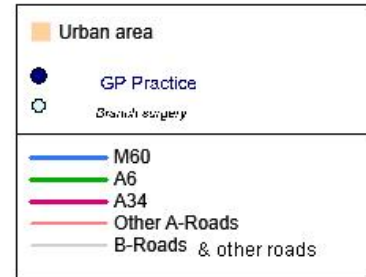
October 2015



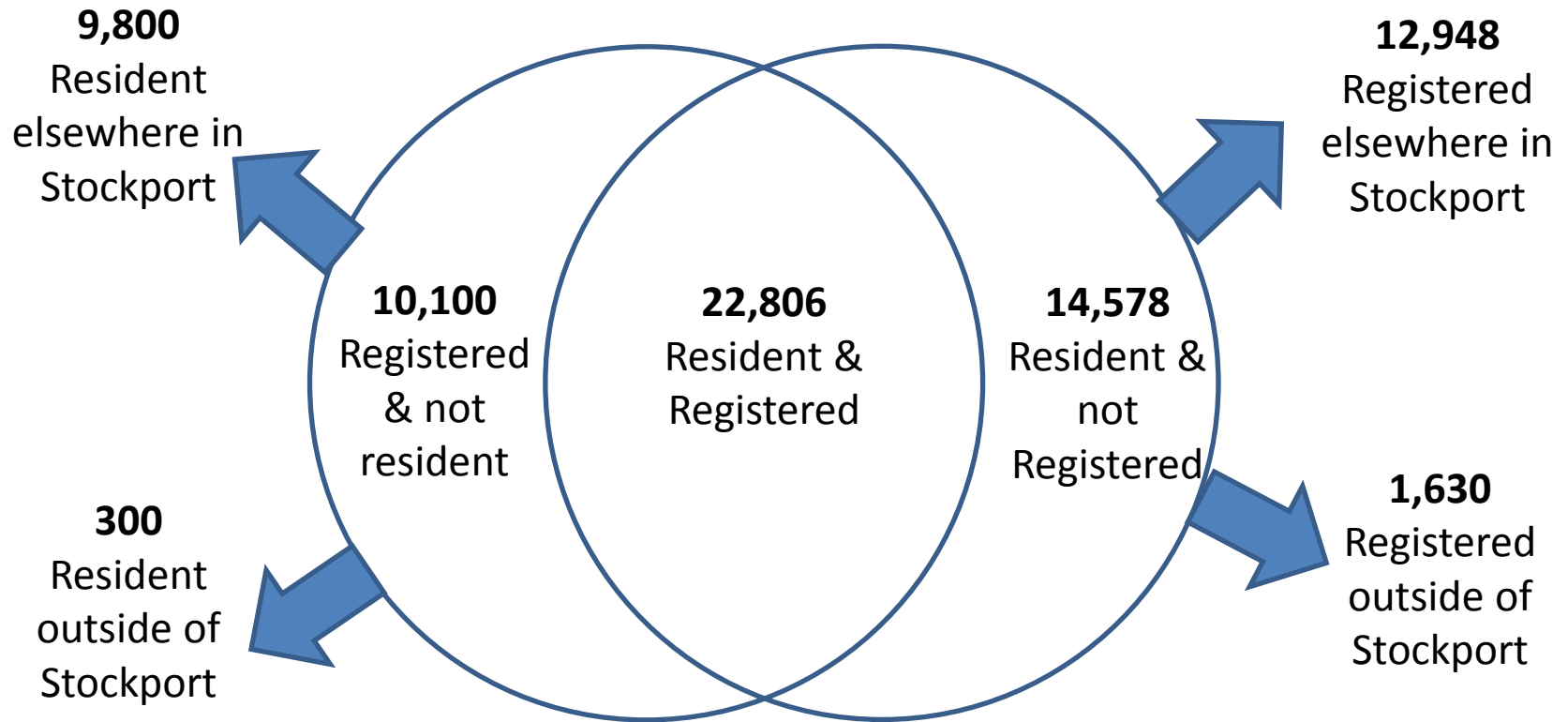
Offerton & Hazel Grove Neighbourhood



1 cm = 0.2306 km



- 37,384 residents (HSCIC)
- 32,906 registered with GPs in area (HSCIC)



- 36,072 residents (ONS)
- 32,897 registered (PCIS)

Resident age profile			
Age Group	Number of people	% of people	Stockport %
0 - 4	2,141	5.9%	6.2%
5 - 19	6,064	16.8%	17.4%
20 - 64	20,707	57.4%	57.3%
65 - 84	6,295	17.5%	16.6%
85+	865	2.4%	2.5%
TOTAL	36,072	-	-
65+	7,160	19.8%	19.1%

Registered age profile			
Age Group	Number of people	% of people	Stockport %
0 - 4	1,843	5.6%	5.9%
5 - 19	5,169	15.7%	16.7%
20 - 64	19,564	59.5%	58.7%
65 - 84	5,510	16.7%	16.2%
85+	811	2.5%	2.5%
TOTAL	32,897	-	-
65+	6,321	19.2%	18.6%

- LTC status for registered population:

	0-64	65+	Total
Not on long term condition register	18,001 - 67.7%	1,263 - 20%	19,264 - 58.5%
On at least 1 LTC register	8,583 - 32.3%	5,061 - 80%	13,644 - 41.5%

- Disease register counts for registered population:

	0-64	65+	Total	% aged 65+	DSR	Stockport DSR
Hypertension	1,972	3,304	5,276	62.6%	16,118.8	14,730.6
CHD	584	1,210	1,794	67.4%	5,490.3	4,180.2
Stroke / TIA	148	537	685	78.4%	2,115.2	2,114.7
Asthma	1,816	518	2,334	22.2%	7,143.3	6,589.2
COPD	261	596	857	69.5%	2,619.8	2,366.9
CKD	107	962	1,069	90.0%	3,277.3	2,602.7
Diabetes	779	1,026	1,805	56.8%	5,514.9	4,996.7
Epilepsy	215	81	296	27.4%	904.6	790.4
Mental Health (QoF)	216	45	261	17.2%	796.3	807.7
Depression	2,613	440	3,053	14.4%	9,241.8	8,643.0
Anxiety	3,484	922	4,406	20.9%	13,362.6	13,275.7
Dementia	8	276	284	97.2%	881.5	913.1
Glaucoma	48	221	269	82.2%	829.9	849.4
AMD	7	160	167	95.8%	509.2	481.0
History of fall	490	507	997	50.9%	3,033.2	3,801.4
Cancer diagnosed since 2003	323	596	919	64.9%	2,811.3	2,705.4

< 20% lower than Stockport average

> 10% higher than Stockport average

- **Cancer screening for registered population:**

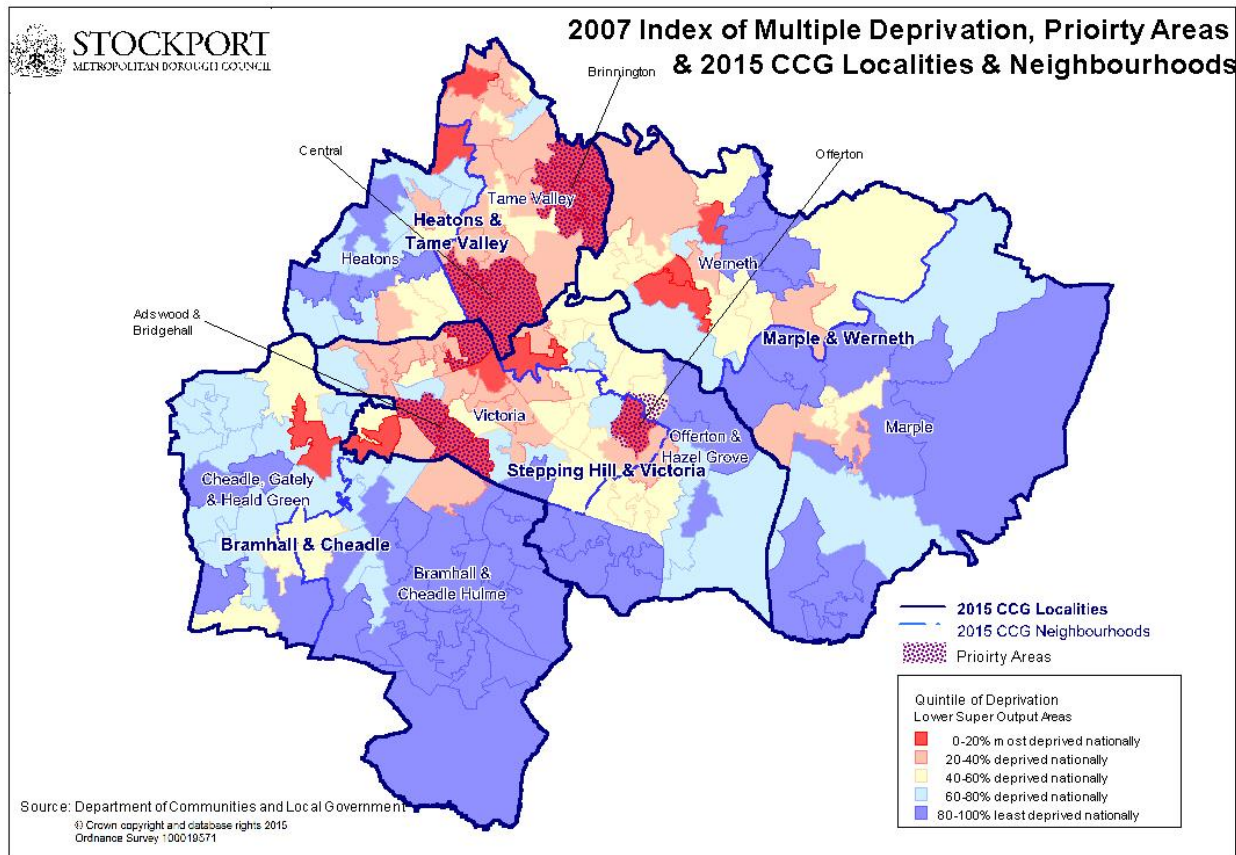
	Neighbourhood	Stockport
Breast cancer (50-70)	69.6%	70.5%
Cervical cancer	78.0%	79.9%
Bowel cancer	54.9%	54.3%

- **Immunisations for registered population:**

	Neighbourhood	Stockport
2 years - Dip	92.6%	96.0%
2 years - Hib	90.0%	91.7%
2 years - MMR1	90.0%	91.3%
2 years - PCV	90.5%	91.9%
5 years - DipB	92.8%	91.5%
5 years - MMR2	92.8%	91.4%
65+ - Influenza	77.7%	80.1%

- Deprivation profile of residents:

	Most deprived quintile	Second most deprived quintile	Mid deprived quintile	Second least deprived quintile	Least deprived quintile
Neighbourhood	4.8%	9.0%	33.1%	17.7%	35.4%
Stockport	12.3%	18.1%	20.0%	21.7%	27.8%



- Average life expectancy of residents:

	Neighbourhood		Stockport	
	At birth	At 65	At birth	At 65
Males	81.4 years	20.5 years	79.9 years	19.4 years
Females	85.2 years	22.5 years	83.0 years	21.1 years

- Lifestyles of adult residents:

	Neighbourhood	Stockport
Smokers	14.6%	16.9%
Unhealthy drinkers	25.1%	26.1%
Low mental wellbeing	11.3%	12.2%
Obesity <i>(underestimate as self reported)</i>	17.4%	16.2%
Not physically active enough	73.6%	73.6%
Eat 5 a day	14.4%	17.9%