



# Stockport

This profile was produced on 2 June 2015

## Local Alcohol Profile 2015

### Introduction

Alcohol use has health and social consequences borne by individuals, their families, and the wider community. The aim of these profiles is to provide information for local government, health organisations, commissioners and other agencies to monitor the impact of alcohol on local communities, and to monitor the services and initiatives that have been put in place to prevent and reduce the harmful impact of alcohol.

Reducing harmful drinking is one of seven priority areas that Public Health England is focusing efforts on securing improvement. The indicators contained within the web-tool were selected following consultation with stakeholders and a review of the availability of routine data. The Local Alcohol Profiles for England (LAPE) are part of a series of products by Public Health England that provide local data alongside national comparisons to support local health improvement.

For further information about each indicator please view the definitions tab within the tool at <http://fingertips.phe.org.uk/profile/local-alcohol-profiles>. For further information on alcohol and health please visit <http://www.lape.org.uk>.

### Spine Charts

Mortality	Page 2
Hospital Admissions	Page 2
Hospital Admissions - Cause groups	Page 3
Other Impacts	Page 4

### Tartan Rugs

Mortality	Page 5
Hospital Admissions	Page 5
Hospital Admissions - Cause groups	Page 6
Other Impacts	Page 8

### Bar Charts

Mortality	Page 9
Hospital Admissions	Page 11
Hospital Admissions - Cause groups	Page 13
Other Impacts	Page 16

### Trends

Mortality	Page 17
Hospital Admissions	Page 19
Hospital Admissions - Cause groups	Page 21



# Spine Charts

## Mortality

	Period	Local value	Eng. value	Eng. worst	England Range	Eng. best
1 1.01 - Months of life lost due to alcohol (Male)	2011 - 13	16.1	12.0	6.1		28.0
2 1.01 - Months of life lost due to alcohol (Female)	2011 - 13	7.2	5.6	13.5		2.8
3 2.01 - Alcohol-specific mortality (Persons)	2011 - 13	19.0	11.9	31.2		3.4
4 2.01 - Alcohol-specific mortality (Male)	2011 - 13	25.9	16.6	44.5		3.6
5 2.01 - Alcohol-specific mortality (Female)	2011 - 13	12.3	7.5	29.9		1.6
6 3.01 - Mortality from chronic liver disease (Persons)	2011 - 13	16.4	11.7	31.7		3.3
7 3.01 - Mortality from chronic liver disease (Male)	2011 - 13	21.5	15.5	44.8		2.4
8 3.01 - Mortality from chronic liver disease (Female)	2011 - 13	11.2	8.2	23.7		0.0
9 4.01 - Alcohol-related mortality (Persons)	2013	52.0	45.3	83.6		27.9
10 4.01 - Alcohol-related mortality (Male)	2013	71.3	65.4	117.3		38.5
11 4.01 - Alcohol-related mortality (Female)	2013	35.4	28.4	68.7		14.8

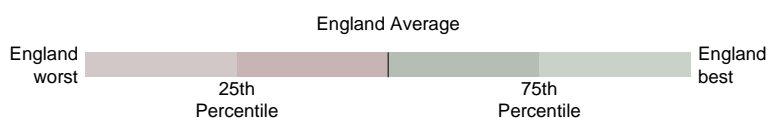
## Hospital Admissions

	Period	Local value	Eng. value	Eng. worst	England Range	Eng. best
12 5.01 - Alcohol-specific hospital admission - under 18s	2011/12 - 13/14	69.7	40.1	105.8		11.2
13 6.01 - Alcohol-specific hospital admission (Persons)	2013/14	563	374	1074		131
14 6.01 - Alcohol-specific hospital admission (Male)	2013/14	750	515	1494		170
15 6.01 - Alcohol-specific hospital admission (Female)	2013/14	385	241	658		77
16 7.01 - Alcohol-related hospital admission (Broad) (Persons)	2013/14	1530	1253	2070		731
17 7.01 - Alcohol-related hospital admission (Broad) (Male)	2013/14	2040	1715	2820		1011
18 7.01 - Alcohol-related hospital admission (Broad) (Female)	2013/14	1087	859	1386		498
19 8.01 - Alcohol-related hospital admission (Narrow) (Persons)	2013/14	538	444	808		264
20 8.01 - Alcohol-related hospital admission (Narrow) (Male)	2013/14	691	594	1049		338
21 8.01 - Alcohol-related hospital admission (Narrow) (Female)	2013/14	400	310	583		190
22 9.01 - Admission episodes for alcohol-related conditions (Broad) (Persons)	2013/14	2502	2111	3493		1115
23 9.01 - Admission episodes for alcohol-related conditions (Broad) (Male)	2013/14	3439	2917	4848		1582
24 9.01 - Admission episodes for alcohol-related conditions (Broad) (Female)	2013/14	1685	1426	2392		727
25 10.01 - Admission episodes for alcohol-related conditions (Narrow) (Persons)	2013/14	713	645	1231		366

### Key

Significance compared to England average:

- Significantly worse
- Significance not tested
- Not significantly different
- ◆ Regional average
- Significantly better



Hospital Admissions continued		Period	Local value	Eng. value	Eng. worst	England Range	Eng. best
26	10.01 - Admission episodes for alcohol-related conditions (Narrow) (Male)	2013/14	940	835	1538		474
27	10.01 - Admission episodes for alcohol-related conditions (Narrow) (Female)	2013/14	506	475	940		262

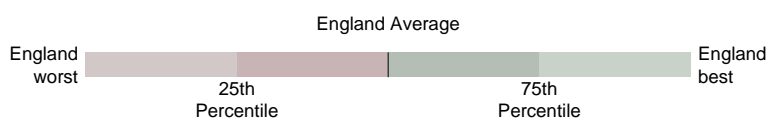
## Hospital Admissions - Cause groups

		Period	Local value	Eng. value	Eng. worst	England Range	Eng. best
28	9.02 - Admission episodes for alcohol-related malignant neoplasm conditions (Broad) (Persons)	2013/14	110.5	175.8	368.2		71.4
29	9.02 - Admission episodes for alcohol-related malignant neoplasm conditions (Broad) (Male)	2013/14	128.8	177.0	438.9		63.7
30	9.02 - Admission episodes for alcohol-related malignant neoplasm conditions (Broad) (Female)	2013/14	92.5	176.5	380.5		58.8
31	9.03 - Admission episodes for alcohol-related cardiovascular disease conditions (Broad) (Persons)	2013/14	1113	1049	1706		550
32	9.03 - Admission episodes for alcohol-related cardiovascular disease conditions (Broad) (Male)	2013/14	1594	1524	2575		842
33	9.03 - Admission episodes for alcohol-related cardiovascular disease conditions (Broad) (Female)	2013/14	729	673	1129		307
34	9.04 - Admission episodes for alcohol-related mental and behavioural disorders due to use of alcohol condition (Broad) (Persons)	2013/14	657	394	1296		111
35	9.04 - Admission episodes for alcohol-related mental and behavioural disorders due to use of alcohol condition (Broad) (Male)	2013/14	948	579	1894		161
36	9.04 - Admission episodes for alcohol-related mental and behavioural disorders due to use of alcohol condition (Broad) (Female)	2013/14	377	218	706		63
37	9.05 - Admission episodes for alcohol-related alcoholic liver disease condition (Broad) (Persons)	2013/14	147.2	105.3	245.6		18.7
38	9.05 - Admission episodes for alcohol-related alcoholic liver disease condition (Broad) (Male)	2013/14	202.1	147.1	351.8		27.1
39	9.05 - Admission episodes for alcohol-related alcoholic liver disease condition (Broad) (Female)	2013/14	94.1	65.8	272.9		16.9
40	10.02 - Admission episodes for alcohol-related malignant neoplasm conditions (Narrow) (Persons)	2013/14	73.6	150.7	359.9		49.8
41	10.02 - Admission episodes for alcohol-related malignant neoplasm conditions (Narrow) (Male)	2013/14	95.6	154.7	404.7		47.8
42	10.02 - Admission episodes for alcohol-related malignant neoplasm conditions (Narrow) (Female)	2013/14	53.3	149.3	352.3		39.3
43	10.03 - Admission episodes for alcohol-related unintentional injuries conditions (Narrow) (Persons)	2013/14	176.5	141.8	223.9		96.6
44	10.03 - Admission episodes for alcohol-related unintentional injuries conditions (Narrow) (Male)	2013/14	264.3	215.2	351.3		142.5
45	10.03 - Admission episodes for alcohol-related unintentional injuries conditions (Narrow) (Female)	2013/14	97.0	74.2	107.5		49.9
46	10.04 - Admission episodes for alcohol-related mental and behavioural disorders due to use of alcohol condition (Narrow) (Persons)	2013/14	133	87	222		17
47	10.04 - Admission episodes for alcohol-related mental and behavioural disorders due to use of alcohol condition (Narrow) (Male)	2013/14	187	124	310		21

### Key

Significance compared to England average:


- Significantly worse
- Not significantly different
- Significantly better
- Significance not tested
- ◆ Regional average



# Stockport

Hospital Admissions - Cause groups continued		Period	Local value	Eng. value	Eng. worst	England Range	Eng. best
48	10.04 - Admission episodes for alcohol-related mental and behavioural disorders due to use of alcohol condition (Narrow) (Female)	2013/14	80	52	152		10
49	10.05 - Admission episodes for alcohol-related intentional self-poisoning by and exposure to alcohol condition (Narrow) (Persons)	2013/14	91.0	58.6	254.1		11.1
50	10.05 - Admission episodes for alcohol-related intentional self-poisoning by and exposure to alcohol condition (Narrow) (Male)	2013/14	80.6	52.0	269.1		7.1
51	10.05 - Admission episodes for alcohol-related intentional self-poisoning by and exposure to alcohol condition (Narrow) (Female)	2013/14	101.7	65.4	239.1		10.1

## Other Impacts

		Period	Local value	Eng. value	Eng. worst	England Range	Eng. best
52	11.01 - Claimants of benefits due to alcoholism	2014	180.7	131.0	528.3		15.7

### Key

Significance compared to England average:

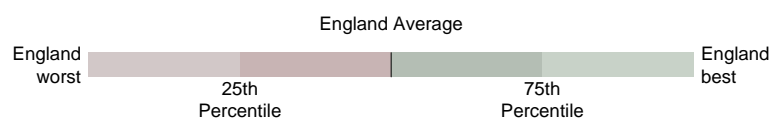
● Significantly worse

○ Significance not tested

● Not significantly different

◆ Regional average

● Significantly better



# Tartan Rugs

## Mortality

		Period	England	North West	Allerdale	Barrow	Blackburn	Blackpool	Bolton	Burnley	Bury	Carlisle	Chesh East	Ch W & Ches	Chorley	Copeland	Eden	Fylde	Halton	Hyndburn	Knowsley	Lancaster	Liverpool	Manchester	Oldham	Pendle	Preston	Ribble Val	Rochdale	Rossendale	Salford	Sefton	S Lakeland	S Ribble	St. Helens	Stockport	Tameside	Trafford	Warrington	West Lancs	Wigan	Wirral	Wyre
1	1.01 - Months of life lost due to alcohol (Male)	2011 - 13	12.0	15.6	14.0	21.6	17.1	28.0	15.8	23.1	13.8	11.6	11.0	12.3	12.0	16.4	9.3	13.3	15.3	19.3	15.3	16.9	20.7	19.9	14.4	14.1	16.0	7.8	15.9	14.8	17.1	18.5	11.9	13.3	15.1	16.1	17.7	13.0	14.9	11.0	15.7	15.6	12.8
2	1.01 - Months of life lost due to alcohol (Female)	2011 - 13	5.6	7.4	9.1	7.1	5.1	10.2	6.6	7.7	7.2	6.6	6.5	6.1	6.2	5.8	5.6	7.2	8.4	6.8	6.8	6.7	8.5	8.4	7.4	6.8	8.4	5.2	8.3	6.1	8.1	8.6	4.0	5.3	9.0	7.2	8.1	7.7	8.4	5.4	8.4	7.2	6.3
3	2.01 - Alcohol-specific mortality (Persons)	2011 - 13	11.9	17.2	14.1	16.2	11.4	30.5	16.6	20.8	14.6	10.3	13.0	13.5	13.3	12.9	8.1	15.4	17.2	15.3	13.3	20.0	25.3	24.7	15.8	11.5	19.7	6.0	18.8	10.5	19.1	21.5	8.2	12.6	17.1	19.0	21.9	17.5	19.5	12.5	17.4	18.7	12.4
4	2.01 - Alcohol-specific mortality (Male)	2011 - 13	16.6	23.3	15.3	24.8	17.9	44.5	23.0	35.6	17.4	11.9	16.9	16.9	18.1	20.3	9.5	18.8	19.1	23.8	18.2	30.8	37.1	37.8	19.2	15.6	25.2	5.6	25.2	12.6	25.0	29.9	12.3	19.4	16.2	25.9	29.1	23.9	25.5	16.9	22.7	25.9	14.4
5	2.01 - Alcohol-specific mortality (Female)	2011 - 13	7.5	11.4	12.9	7.8	4.9	17.0	10.4	6.0	11.8	8.8	9.3	10.3	8.7	5.2	6.8	12.6	15.4	7.6	9.0	10.0	14.3	11.8	12.6	7.5	14.1	6.3	12.7	8.4	13.2	14.0	4.1	6.1	17.9	12.3	14.9	11.7	14.0	8.3	12.2	12.2	10.7
6	3.01 - Mortality from chronic liver disease (Persons)	2011 - 13	11.7	16.8	10.5	21.0	17.3	31.7	14.4	24.5	15.2	8.8	11.3	13.7	14.4	12.5	6.0	15.2	16.3	20.2	15.0	17.9	23.7	23.8	17.3	11.8	20.3	7.5	19.5	11.3	18.7	18.0	9.0	9.5	18.8	16.4	18.6	16.2	19.3	11.2	20.0	16.1	13.6
7	3.01 - Mortality from chronic liver disease (Male)	2011 - 13	15.5	22.2	12.7	29.2	26.2	44.8	20.3	35.8	17.6	8.1	14.4	17.1	19.8	17.3	7.0	19.7	18.9	30.1	20.3	25.7	31.7	34.3	21.3	14.0	24.7	10.4	24.8	12.6	23.0	24.6	11.8	15.1	20.8	21.5	24.3	22.1	25.2	14.1	26.4	21.4	17.1
8	3.01 - Mortality from chronic liver disease (Female)	2011 - 13	8.2	11.8	8.6	13.4	9.0	19.1	8.7	13.3	13.4	9.2	8.6	10.6	9.0	7.8	4.9	11.3	14.0	11.3	10.2	10.7	16.1	13.1	13.8	9.9	15.3	5.3	14.2	9.9	14.0	11.9	6.2	4.2	16.7	11.2	13.1	11.0	14.3	8.8	13.9	11.4	10.3
9	4.01 - Alcohol-related mortality (Persons)	2013	45.3	54.7	54.0	66.6	60.3	79.5	56.5	72.3	47.2	42.6	44.3	49.4	49.5	43.4	30.5	42.7	57.4	61.0	56.9	49.8	68.5	64.1	55.3	46.5	59.6	39.8	53.0	50.5	63.7	54.8	41.6	49.5	56.7	52.0	59.4	55.3	58.8	46.8	56.5	55.9	49.9
10	4.01 - Alcohol-related mortality (Male)	2013	65.4	79.0	69.1	109.8	97.3	113.6	85.3	117.3	68.4	48.8	61.7	69.7	64.1	58.7	38.5	56.7	86.8	97.4	87.1	74.8	105.6	96.8	74.5	70.7	85.1	55.7	75.1	72.7	87.0	79.1	66.2	80.1	76.9	71.3	85.2	76.4	85.8	71.0	81.3	79.3	71.9
11	4.01 - Alcohol-related mortality (Female)	2013	28.4	34.1	41.0	31.8	27.6	49.8	32.2	30.3	30.4	37.9	30.4	33.0	37.4	28.9	24.4	31.9	31.4	29.5	33.0	28.3	35.7	35.5	38.6	26.8	36.8	28.2	35.0	31.3	41.0	34.9	20.4	23.2	38.8	35.4	36.4	38.7	39.3	27.3	35.7	37.5	31.8

## Hospital Admissions

12	5.01 - Alcohol-specific hospital admission - under 18s	2011/12 - 13/14	40.1	60.4	73.8	93.6	69.1	100.0	50.6	101.2	45.8	-*	57.8	41.9	40.0	105.8	-*	58.2	60.5	93.1	57.4	50.7	48.6	55.4	62.8	50.1	56.3	49.9	54.6	46.4	87.3	54.5	78.8	48.8	80.7	69.7	62.5	39.5	59.7	76.9	59.0	67.6	84.1
13	6.01 - Alcohol-specific hospital admission (Persons)	2013/14	374	559	388	619	644	798	500	669	457	459	375	375	374	518	228	337	672	601	652	489	750	764	539	506	461	290	613	526	1074	537	334	312	681	563	671	494	500	467	575	741	360
14	6.01 - Alcohol-specific hospital admission (Male)	2013/14	515	757	495	840	940	1074	671	891	613	605	479	500	462	645	256	450	918	846	909	672	1028	1104	751	697	646	365	858	747	1494	753	402	387	871	750	934	675	646	606	769	989	451
15	6.01 - Alcohol-specific hospital admission (Female)	2013/14	241	372	285	404	353	528	337	457	313	321	279	258	289	393	202	228	444	363	429	320	493	437	343	321	279	221	381	311	658	345	273	244	500	385	416	327	359	340	386	517	280
16	7.01 - Alcohol-related hospital admission (Broad) (Persons)	2013/14	1253	1546	1208	1764	1850	1795	1459	1862	1364	1349	1249	1238	1283	1493	965	1096	1837	1773	1812	1413	1820	1971	1521	1601	1413	1193	1640	1540	2070	1462	1133	1193	1743	1530	1748	1388	1476	1404	1652	1804	1154

Comparison with respect to England value

Better

Similar

Worse

Not compared

Note: \* - Disclosure control applied

## Stockport

## Hospital Admissions continued

		Period	England	North West	Allerdale	Barrow	Blackburn	Blackpool	Bolton	Burnley	Bury	Carlisle	Chesh East	Ch W & Ches	Chorley	Copeland	Eden	Fylde	Halton	Hyndburn	Knowsley	Lancaster	Liverpool	Manchester	Oldham	Pendle	Preston	Ribble Val	Rochdale	Rossendale	Salford	Sefton	S Lakeland	S Ribble	St. Helens	Stockport	Tameside	Trafford	Warrington	West Lancs	Wigan	Wirral	Wyre
17	7.01 - Alcohol-related hospital admission (Broad) (Male)	2013/14	1715	2090	1613	2353	2526	2417	1969	2491	1869	1836	1680	1686	1689	1952	1276	1513	2485	2430	2472	1917	2455	2700	2085	2153	1904	1611	2241	2134	2820	2037	1511	1584	2301	2040	2380	1890	1964	1915	2230	2446	1539
18	7.01 - Alcohol-related hospital admission (Broad) (Female)	2013/14	859	1076	857	1248	1248	1240	1011	1319	936	929	882	854	931	1089	697	738	1277	1192	1276	982	1273	1345	1043	1121	980	845	1121	1010	1386	997	817	861	1259	1087	1193	969	1057	974	1146	1264	837
19	8.01 - Alcohol-related hospital admission (Narrow) (Persons)	2013/14	444	551	455	655	606	808	559	644	475	518	448	450	486	511	360	454	658	579	644	514	658	637	547	519	489	370	557	529	697	517	432	404	660	538	618	475	537	495	577	664	473
20	8.01 - Alcohol-related hospital admission (Narrow) (Male)	2013/14	594	729	600	874	836	1049	744	889	643	668	581	591	618	644	442	606	884	795	861	685	883	860	749	707	619	492	771	740	897	714	544	493	854	691	829	612	691	650	771	881	603
21	8.01 - Alcohol-related hospital admission (Narrow) (Female)	2013/14	310	392	324	455	388	583	391	419	329	382	331	325	366	390	288	315	458	381	461	362	457	436	369	346	368	263	367	333	510	349	339	329	487	400	426	355	403	360	400	475	364
22	9.01 - Admission episodes for alcohol-related conditions (Broad) (Persons)	2013/14	2111	2570	2387	2794	3118	3146	2300	3226	2322	2987	1966	1944	2113	2881	1978	1880	2871	2898	2810	2361	2950	3345	2577	2719	2343	1885	2811	2618	3493	2345	1917	1996	2640	2502	2819	2334	2273	2278	2970	2946	1892
23	9.01 - Admission episodes for alcohol-related conditions (Broad) (Male)	2013/14	2917	3550	3322	3912	4426	4216	3181	4528	3282	4119	2661	2695	2847	3958	2829	2584	3908	4110	3882	3209	4068	4662	3695	3705	3246	2612	3896	3801	4848	3310	2606	2689	3580	3439	3930	3286	3080	3175	4039	4087	2479
24	9.01 - Admission episodes for alcohol-related conditions (Broad) (Female)	2013/14	1426	1725	1558	1811	1943	2183	1524	2101	1508	1985	1374	1302	1474	1904	1219	1280	1981	1821	1937	1633	1989	2220	1641	1871	1535	1296	1880	1556	2265	1568	1332	1408	1821	1685	1842	1532	1585	1532	2048	1985	1412
25	10.01 - Admission episodes for alcohol-related conditions (Narrow) (Persons)	2013/14	645	746	722	944	792	1231	733	916	642	749	588	561	641	741	562	670	814	751	795	772	809	863	759	729	701	486	753	741	954	676	715	569	823	713	835	646	689	621	873	853	708
26	10.01 - Admission episodes for alcohol-related conditions (Narrow) (Male)	2013/14	835	989	939	1324	1121	1538	974	1292	865	962	750	736	804	897	672	822	1108	1069	1102	999	1102	1175	1046	979	913	657	1050	1082	1248	945	863	705	1076	940	1155	854	888	806	1122	1153	835
27	10.01 - Admission episodes for alcohol-related conditions (Narrow) (Female)	2013/14	475	525	525	590	474	940	513	564	442	552	444	404	489	603	464	534	553	454	534	566	543	574	503	499	499	334	486	417	675	442	588	453	593	506	534	459	513	461	649	588	601

## Hospital Admissions - Cause groups

28	9.02 - Admission episodes for alcohol-related malignant neoplasm conditions (Broad) (Persons)	2013/14	175.8	134.5	182.9	153.8	104.0	291.3	113.4	139.6	121.2	223.8	116.1	119.2	132.0	185.8	193.4	188.3	117.0	111.9	134.7	212.7	114.3	118.3	131.4	157.5	142.9	105.4	114.7	84.7	121.3	115.3	230.8	122.3	97.0	110.5	111.8	93.6	106.5	103.9	185.4	112.1	232.9
29	9.02 - Admission episodes for alcohol-related malignant neoplasm conditions (Broad) (Male)	2013/14	177.0	154.0	200.1	200.9	138.6	282.0	143.7	190.5	148.6	268.6	122.5	141.4	141.3	178.4	213.0	150.5	156.3	156.2	180.0	199.8	151.3	141.7	170.3	193.5	174.9	109.9	150.2	112.8	154.9	137.8	209.8	147.6	111.9	128.8	131.6	112.9	125.6	122.9	171.7	116.8	227.6
30	9.02 - Admission episodes for alcohol-related malignant neoplasm conditions (Broad) (Female)	2013/14	176.5	117.7	165.3	117.9	68.4	300.6	88.5	95.5	96.6	181.3	110.6	99.3	122.7	199.8	174.4	225.2	85.6	75.3	94.2	225.6	81.2	97.2	96.8	125.4	110.3	103.2	81.0	58.8	89.9	98.2	247.6	100.1	83.5	92.5	93.7	78.2	91.6	88.9	203.1	108.2	243.4

Comparison with respect to England value

Better

Similar

Worse

Not compared

## Hospital Admissions - Cause groups continued

		Period	England	North West	Allerdale	Barrow	Blackburn	Blackpool	Bolton	Burnley	Bury	Carlisle	Chesh East	Ch W & Ches	Chorley	Copeland	Eden	Fylde	Halton	Hyndburn	Knowsley	Lancaster	Liverpool	Manchester	Oldham	Pendle	Preston	Ribble Val	Rochdale	Rossendale	Salford	Sefton	S Lakeland	S Ribble	St. Helens	Stockport	Tameside	Trafford	Warrington	West Lancs	Wigan	Wirral	Wyre
31	9.03 - Admission episodes for alcohol-related cardiovascular disease conditions (Broad) (Persons)	2013/14	1049	1181	1296	1304	1521	1127	1090	1460	1125	1708	956	993	1071	1564	1171	872	1330	1426	1248	1085	1149	1508	1170	1388	1084	1065	1323	1277	1223	1035	901	1032	1120	1113	1305	1118	1074	1123	1425	1234	896
32	9.03 - Admission episodes for alcohol-related cardiovascular disease conditions (Broad) (Male)	2013/14	1524	1695	1973	1834	2136	1565	1566	2035	1674	2575	1404	1450	1547	2326	1762	1321	1846	2020	1776	1549	1612	2080	1705	1984	1538	1593	1861	1867	1736	1520	1364	1468	1583	1594	1840	1628	1540	1645	2049	1784	1287
33	9.03 - Admission episodes for alcohol-related cardiovascular disease conditions (Broad) (Female)	2013/14	673	773	713	880	1033	781	697	1020	692	954	594	624	686	893	658	516	913	947	846	712	792	1094	760	912	719	657	905	796	821	680	525	676	754	729	878	721	711	717	929	808	583
34	9.04 - Admission episodes for alcohol-related mental and behavioural disorders due to use of alcohol condition (Broad) (Persons)	2013/14	394	623	430	587	778	785	475	794	529	398	409	373	364	538	214	289	770	664	723	450	985	907	599	527	460	301	647	607	1296	635	369	312	707	657	722	550	529	472	643	857	296
35	9.04 - Admission episodes for alcohol-related mental and behavioural disorders due to use of alcohol condition (Broad) (Male)	2013/14	579	897	594	839	1199	1159	694	1191	780	586	547	498	503	694	296	404	1101	995	1038	648	1395	1344	922	809	702	387	960	951	1894	904	523	434	1008	948	1078	787	731	657	913	1249	412
36	9.04 - Admission episodes for alcohol-related mental and behavioural disorders due to use of alcohol condition (Broad) (Female)	2013/14	218	362	273	343	361	413	265	416	293	219	279	256	225	385	133	176	464	341	448	265	602	483	303	256	219	222	350	271	706	396	226	195	415	377	375	332	334	302	379	499	190
37	9.05 - Admission episodes for alcohol-related alcoholic liver disease condition (Broad) (Persons)	2013/14	105.3	152.6	134.4	125.9	148.5	186.7	141.4	235.3	112.2	208.7	103.9	99.3	99.1	103.2	52.3	133.2	109.3	149.3	160.9	118.4	207.0	219.7	164.1	164.0	153.3	74.5	201.0	214.8	239.7	162.4	49.5	141.3	160.4	147.2	162.7	171.3	101.2	141.9	192.9	160.7	91.0
38	9.05 - Admission episodes for alcohol-related alcoholic liver disease condition (Broad) (Male)	2013/14	147.1	201.7	117.0	187.0	190.3	279.6	180.7	308.1	117.8	140.5	128.4	146.4	137.7	113.7	61.5	172.1	118.3	228.6	201.3	180.1	269.9	334.0	226.3	114.6	229.8	101.1	250.3	311.5	328.5	223.9	69.9	196.0	213.2	202.1	222.2	251.3	139.0	186.6	238.2	221.7	110.6
39	9.05 - Admission episodes for alcohol-related alcoholic liver disease condition (Broad) (Female)	2013/14	65.8	106.2	150.7	65.2	107.2	96.2	103.2	167.4	107.9	272.9	80.6	54.1	61.6	92.1	42.5	99.8	101.4	71.2	125.0	61.5	148.8	110.8	107.5	211.0	78.1	49.9	154.8	117.6	148.9	106.3	30.0	95.8	109.2	94.1	103.9	94.7	64.7	102.4	148.0	105.4	74.8
40	10.02 - Admission episodes for alcohol-related malignant neoplasm conditions (Narrow) (Persons)	2013/14	150.7	103.1	181.2	109.4	74.3	253.5	79.3	103.4	88.3	172.9	85.6	85.3	84.9	180.8	184.9	168.2	81.4	77.2	93.4	182.2	78.9	87.8	95.2	122.7	105.9	87.4	89.3	61.1	88.7	83.3	199.4	95.7	69.9	73.6	85.4	64.8	69.9	70.9	161.6	77.7	209.8
41	10.02 - Admission episodes for alcohol-related malignant neoplasm conditions (Narrow) (Male)	2013/14	154.7	120.8	217.8	148.3	100.3	236.7	104.0	143.4	115.9	176.9	94.1	103.8	87.8	177.1	196.5	136.8	108.2	107.8	129.2	168.7	110.1	117.0	128.6	146.8	130.1	103.4	124.4	86.6	121.8	106.1	173.4	110.8	85.4	95.6	109.4	78.2	88.6	80.6	159.3	90.6	200.6
42	10.02 - Admission episodes for alcohol-related malignant neoplasm conditions (Narrow) (Female)	2013/14	149.3	88.1	147.7	80.5	49.0	272.2	58.0	67.0	64.0	168.2	78.2	68.6	83.6	190.8	174.2	199.8	58.7	51.6	61.4	196.1	50.9	62.2	66.1	101.7	83.0	73.4	57.1	39.3	58.3	65.0	221.2	83.1	57.0	53.3	63.5	53.7	55.3	63.6	171.2	66.9	223.5
43	10.03 - Admission episodes for alcohol-related unintentional injuries conditions (Narrow) (Persons)	2013/14	141.8	157.9	113.6	173.4	159.2	181.6	152.3	179.5	156.8	123.1	138.4	134.3	133.2	124.7	114.8	134.2	206.7	180.1	184.4	153.7	171.3	175.4	173.9	147.8	145.0	137.4	169.2	166.8	191.5	139.9	142.1	125.8	186.2	176.5	150.6	136.9	180.9	144.7	164.1	191.3	134.5
44	10.03 - Admission episodes for alcohol-related unintentional injuries conditions (Narrow) (Male)	2013/14	215.2	239.5	171.5	257.8	242.7	274.6	231.1	272.1	245.6	187.5	208.3	203.4	205.3	185.2	176.2	203.1	320.5	281.9	279.4	232.2	256.7	267.9	268.9	221.2	218.7	205.1	258.2	257.3	293.5	216.7	218.2	181.4	281.5	264.3	229.9	205.5	267.9	219.8	253.9	293.5	198.0

Comparison with respect to England value

Better

Similar

Worse

Not compared

## Stockport

## Hospital Admissions - Cause groups continued

		Period	England	North West	Allerdale	Barrow	Blackburn	Blackpool	Bolton	Burnley	Bury	Carlisle	Chesh East	Ch W & Ches	Chorley	Copeland	Eden	Fylde	Halton	Hyndburn	Knowsley	Lancaster	Liverpool	Manchester	Oldham	Pendle	Preston	Ribble Val	Rochdale	Rossendale	Salford	Sefton	S Lakeland	S Ribble	St. Helens	Stockport	Tameside	Trafford	Warrington	West Lancs	Wigan	Wirral	Wyre
45	10.03 - Admission episodes for alcohol-related unintentional injuries conditions (Narrow) (Female)	2013/14	74.2	82.8	57.9	92.7	79.3	94.9	79.2	93.0	76.3	63.5	73.6	71.8	63.8	63.9	54.3	70.8	103.7	84.7	103.1	83.0	93.7	89.3	88.1	79.2	74.8	75.6	87.6	80.4	96.3	72.8	70.2	75.0	98.5	97.0	76.8	74.6	101.1	77.5	81.4	100.5	76.7
46	10.04 - Admission episodes for alcohol-related mental and behavioural disorders due to use of alcohol condition (Narrow) (Persons)	2013/14	87	139	135	208	149	190	139	158	105	102	113	89	96	121	59	78	160	117	160	69	222	174	118	100	94	39	122	133	186	173	127	70	168	133	204	132	128	110	141	180	75
47	10.04 - Admission episodes for alcohol-related mental and behavioural disorders due to use of alcohol condition (Narrow) (Male)	2013/14	124	192	202	277	222	262	196	251	140	159	146	107	134	147	72	116	229	172	230	98	293	241	168	163	139	50	181	207	239	243	193	93	235	187	303	166	163	144	197	266	98
48	10.04 - Admission episodes for alcohol-related mental and behavioural disorders due to use of alcohol condition (Narrow) (Female)	2013/14	52	87	71	139	76	119	84	65	73	48	82	71	56	95	47	43	94	63	98	42	152	109	70	37	47	30	64	63	132	109	69	46	103	80	106	100	96	79	85	100	55
49	10.05 - Admission episodes for alcohol-related intentional self-poisoning by and exposure to alcohol condition (Narrow) (Persons)	2013/14	58.6	87.6	57.3	160.4	98.6	254.1	98.7	105.1	56.9	122.7	55.6	48.7	99.1	74.6	40.7	58.1	120.9	95.7	84.2	99.8	44.3	82.0	59.2	98.9	83.4	28.7	70.2	84.1	135.0	46.9	84.1	68.2	138.5	91.0	114.3	73.3	91.3	74.4	134.6	146.4	82.0
50	10.05 - Admission episodes for alcohol-related intentional self-poisoning by and exposure to alcohol condition (Narrow) (Male)	2013/14	52.0	80.9	57.0	206.2	114.3	269.1	95.7	111.7	55.9	111.2	40.9	43.9	76.1	72.5	-	57.7	116.0	98.8	82.4	101.5	38.1	72.9	52.4	104.1	61.0	26.0	74.6	110.6	127.5	50.3	42.0	31.8	110.3	80.6	119.9	56.6	74.3	59.7	130.3	131.7	58.9
51	10.05 - Admission episodes for alcohol-related intentional self-poisoning by and exposure to alcohol condition (Narrow) (Female)	2013/14	65.4	94.4	57.6	116.3	82.9	239.1	102.3	98.2	58.2	133.6	70.0	53.4	122.4	77.5	70.2	58.6	126.1	93.9	86.1	98.5	50.6	91.9	66.3	93.8	107.1	30.8	66.0	57.6	142.2	43.9	130.0	103.6	166.7	101.7	109.4	89.3	107.9	88.7	139.2	160.5	105.9

## Other Impacts

52	11.01 - Claimants of benefits due to alcoholism	2014	131.0	220.8	176.7	196.2	374.5	528.3	245.1	359.8	202.2	151.0	103.9	119.7	132.1	164.9	32.7	185.3	217.7	267.9	219.4	239.0	290.4	345.7	189.2	202.3	262.8	59.3	290.3	212.1	305.1	205.0	68.6	106.3	196.4	180.7	226.9	134.9	102.0	104.8	166.8	289.3	148.4
----	---	------	-------	-------	-------	-------	-------	-------	-------	-------	-------	-------	-------	-------	-------	-------	------	-------	-------	-------	-------	-------	-------	-------	-------	-------	-------	------	-------	-------	-------	-------	------	-------	-------	-------	-------	-------	-------	-------	-------	-------	-------

Comparison with respect to England value

Better

Similar

Worse

Not compared

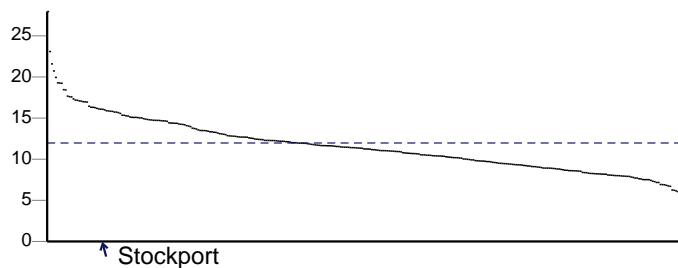
Note: \* - Disclosure control applied



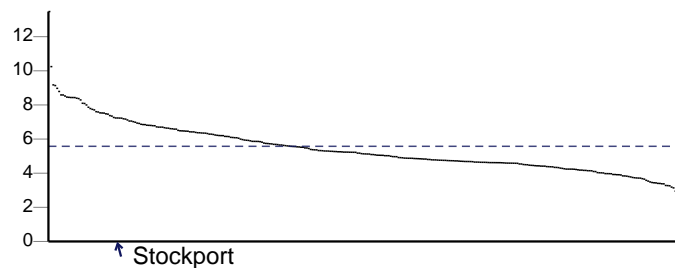
# Bar Charts

## Mortality

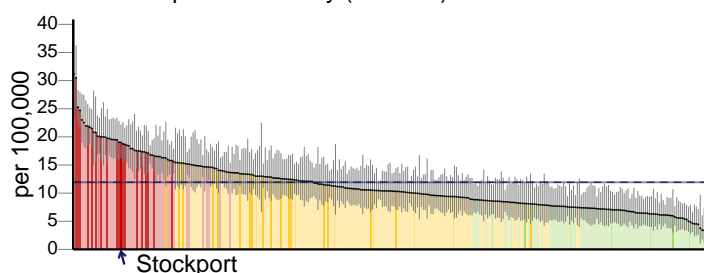
1.01 - Months of life lost due to alcohol (Male)



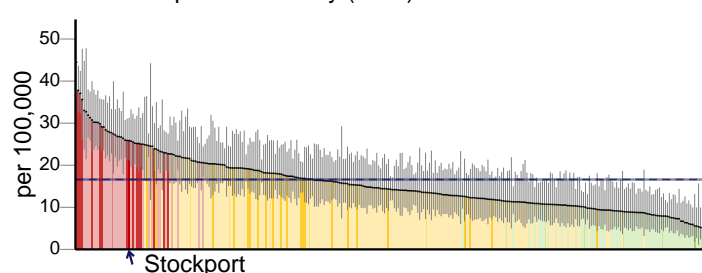
1.01 - Months of life lost due to alcohol (Female)



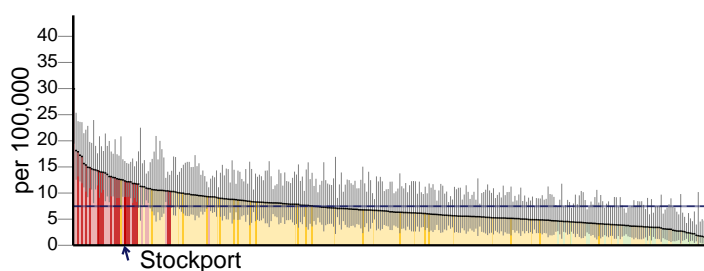
2.01 - Alcohol-specific mortality (Persons)



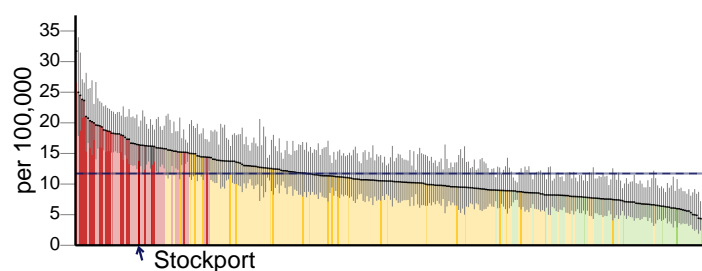
2.01 - Alcohol-specific mortality (Male)



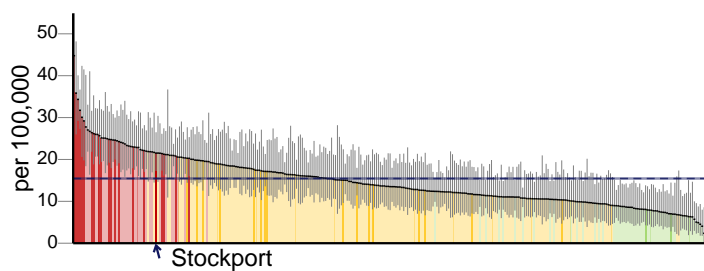
2.01 - Alcohol-specific mortality (Female)



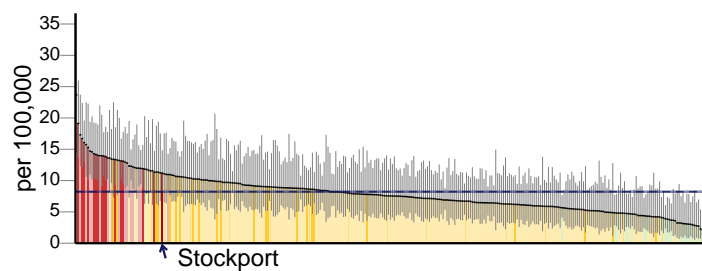
3.01 - Mortality from chronic liver disease (Persons)



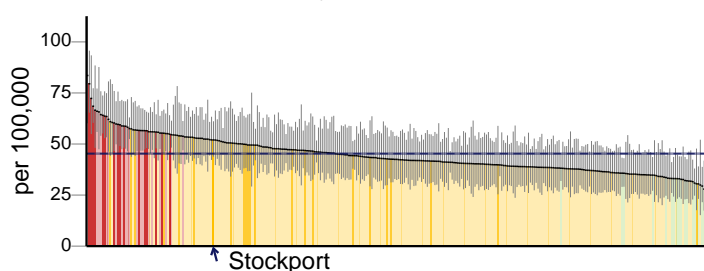
3.01 - Mortality from chronic liver disease (Male)



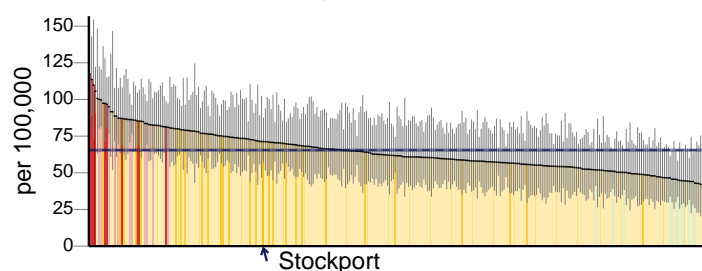
3.01 - Mortality from chronic liver disease (Female)



4.01 - Alcohol-related mortality (Persons)



4.01 - Alcohol-related mortality (Male)

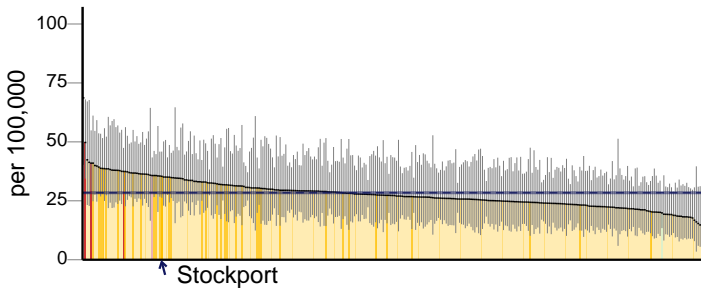


**Key** North West LAs: ■ Better ■ Similar ■ Worse ■ England value and confidence interval  
 Other LAs: ■ Better ■ Similar ■ Worse

# Stockport

## Mortality continued

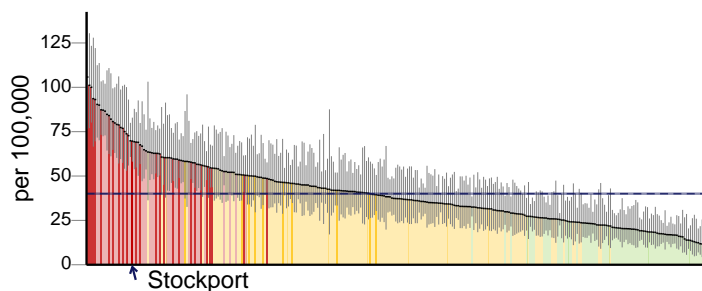
4.01 - Alcohol-related mortality (Female)



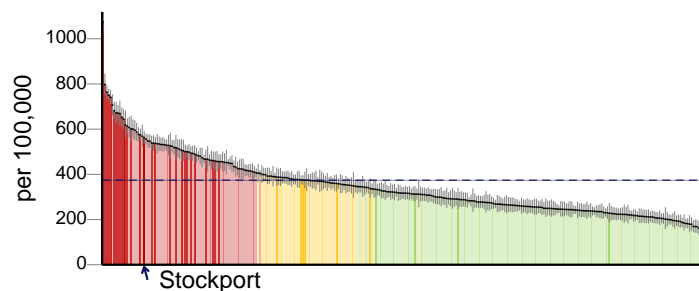
**Key** North West LAs: Better Similar Worse England value and confidence interval  
Other LAs: Better Similar Worse

## Hospital Admissions

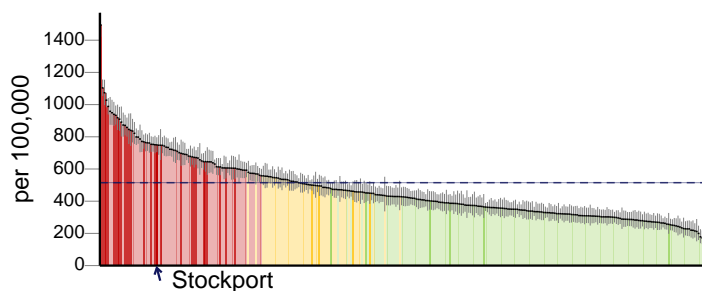
5.01 - Alcohol-specific hospital admission - under 18s



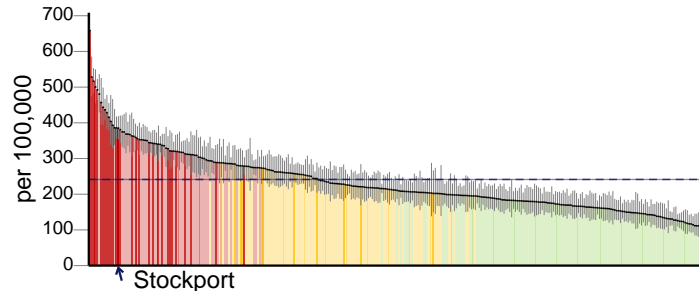
6.01 - Alcohol-specific hospital admission (Persons)



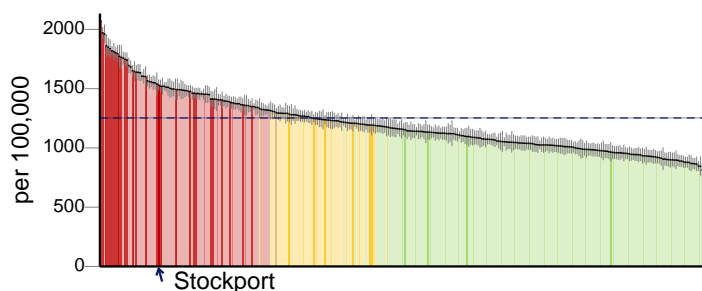
6.01 - Alcohol-specific hospital admission (Male)



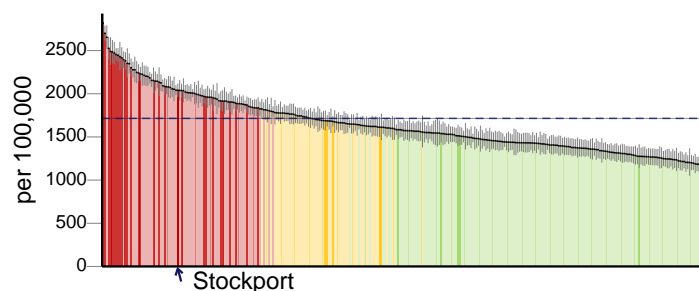
6.01 - Alcohol-specific hospital admission (Female)



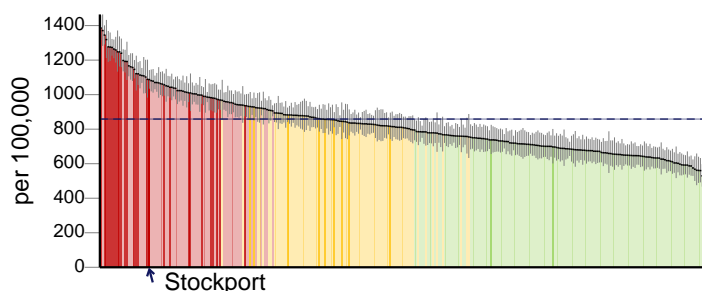
7.01 - Alcohol-related hospital admission (Broad) (Persons)



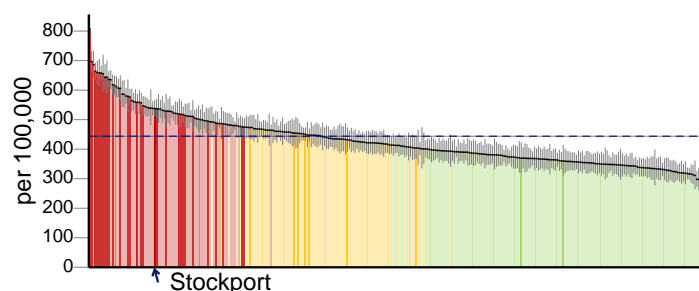
7.01 - Alcohol-related hospital admission (Broad) (Male)



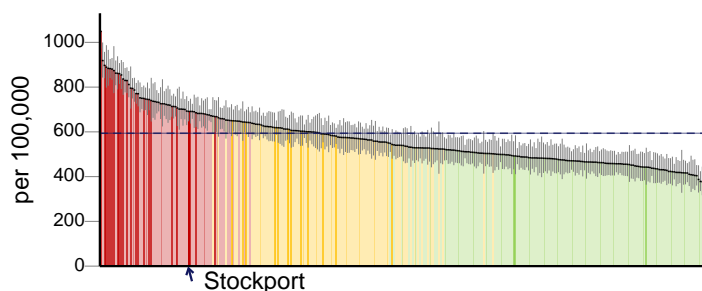
7.01 - Alcohol-related hospital admission (Broad) (Female)



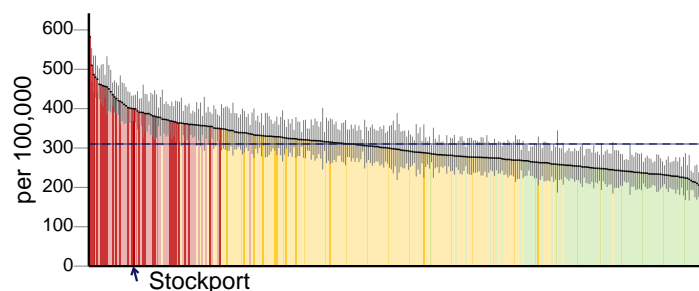
8.01 - Alcohol-related hospital admission (Narrow) (Persons)



8.01 - Alcohol-related hospital admission (Narrow) (Male)



8.01 - Alcohol-related hospital admission (Narrow) (Female)

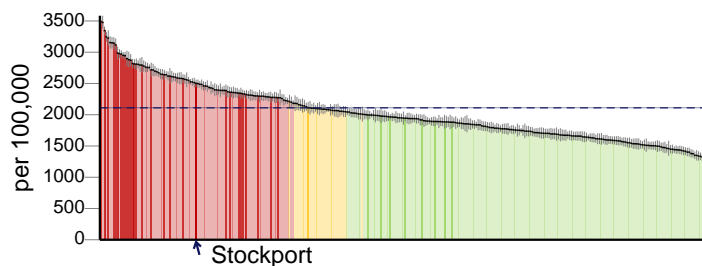


**Key** North West LAs: ■ Better ■ Similar ■ Worse — England value and confidence interval  
Other LAs: ■ Better ■ Similar ■ Worse

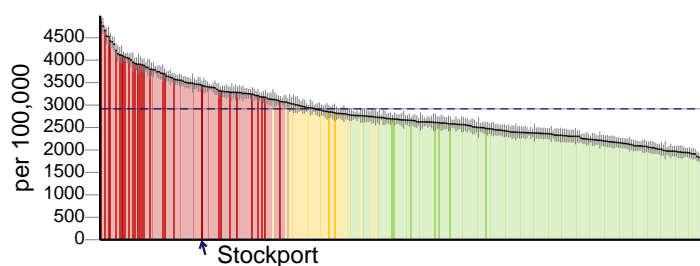
## Stockport

## Hospital Admissions continued

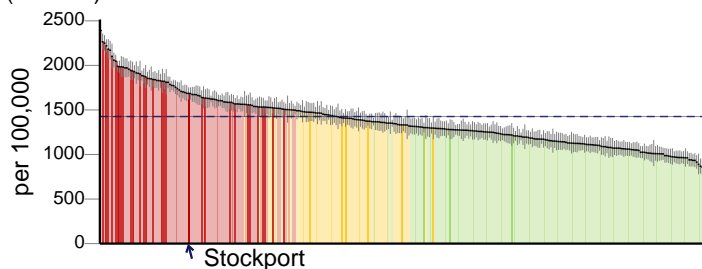
9.01 - Admission episodes for alcohol-related conditions (Broad) (Persons)



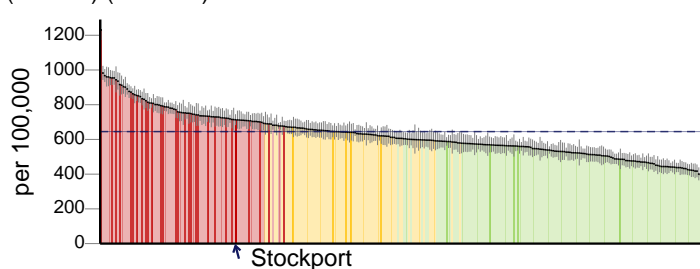
9.01 - Admission episodes for alcohol-related conditions (Broad) (Male)



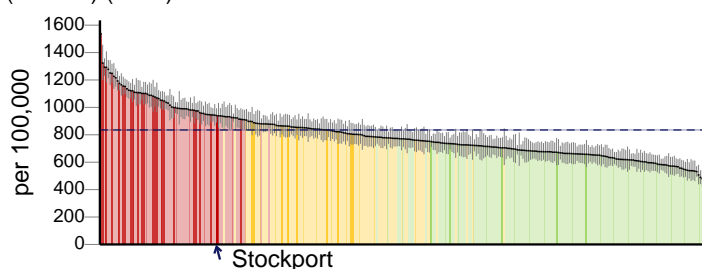
9.01 - Admission episodes for alcohol-related conditions (Broad) (Female)



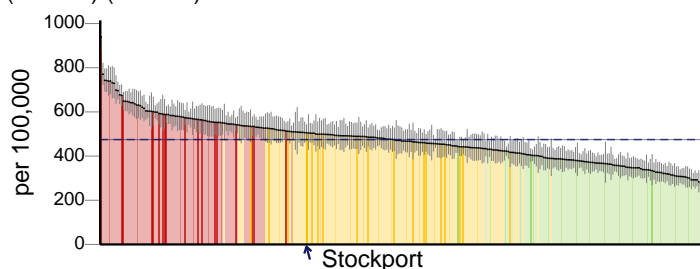
10.01 - Admission episodes for alcohol-related conditions (Narrow) (Persons)



10.01 - Admission episodes for alcohol-related conditions (Narrow) (Male)



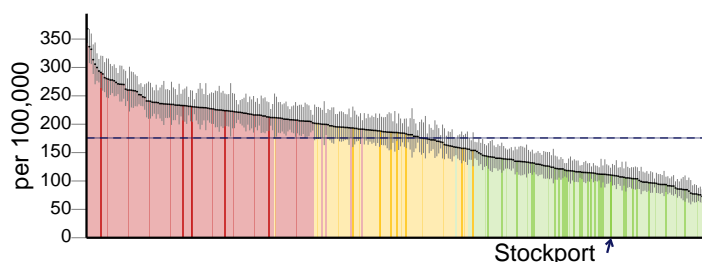
10.01 - Admission episodes for alcohol-related conditions (Narrow) (Female)



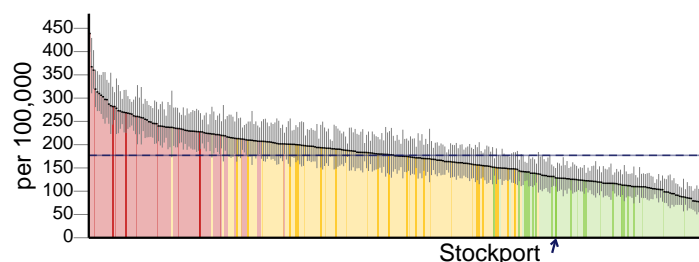
**Key** North West LAs: ■ Better ■ Similar ■ Worse ■ England value and confidence interval  
 Other LAs: ■ Better ■ Similar ■ Worse

## Hospital Admissions - Cause groups

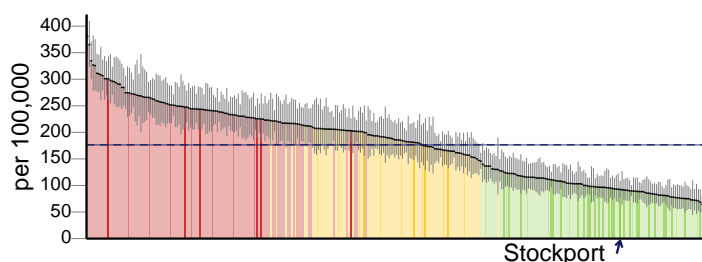
9.02 - Admission episodes for alcohol-related malignant neoplasm conditions (Broad) (Persons)



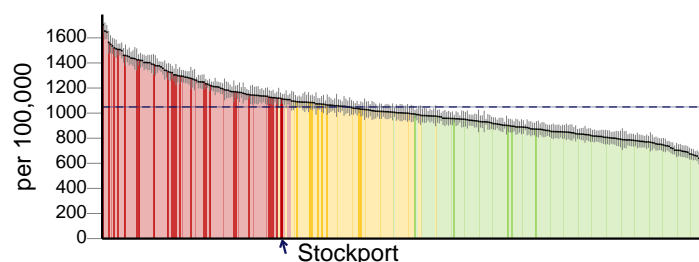
9.02 - Admission episodes for alcohol-related malignant neoplasm conditions (Broad) (Male)



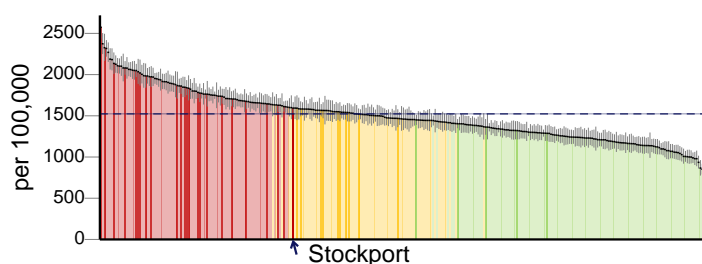
9.02 - Admission episodes for alcohol-related malignant neoplasm conditions (Broad) (Female)



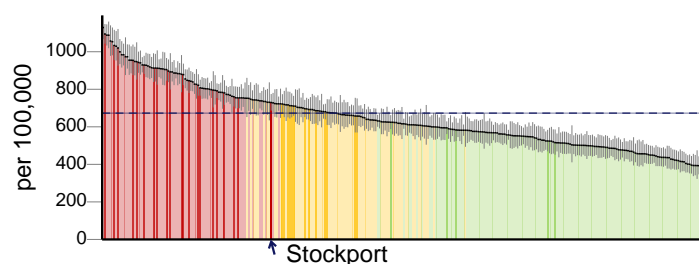
9.03 - Admission episodes for alcohol-related cardiovascular disease conditions (Broad) (Persons)



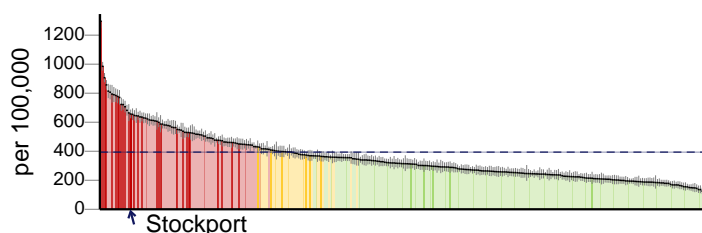
9.03 - Admission episodes for alcohol-related cardiovascular disease conditions (Broad) (Male)



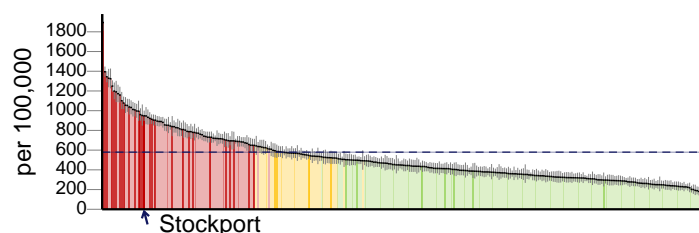
9.03 - Admission episodes for alcohol-related cardiovascular disease conditions (Broad) (Female)



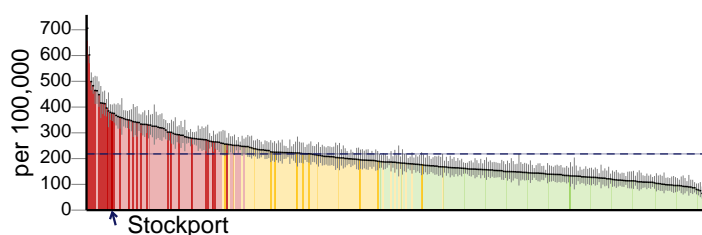
9.04 - Admission episodes for alcohol-related mental and behavioural disorders due to use of alcohol condition (Broad) (Persons)



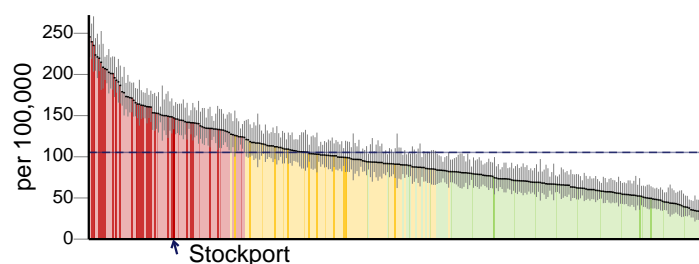
9.04 - Admission episodes for alcohol-related mental and behavioural disorders due to use of alcohol condition (Broad) (Male)



9.04 - Admission episodes for alcohol-related mental and behavioural disorders due to use of alcohol condition (Broad) (Female)



9.05 - Admission episodes for alcohol-related alcoholic liver disease condition (Broad) (Persons)

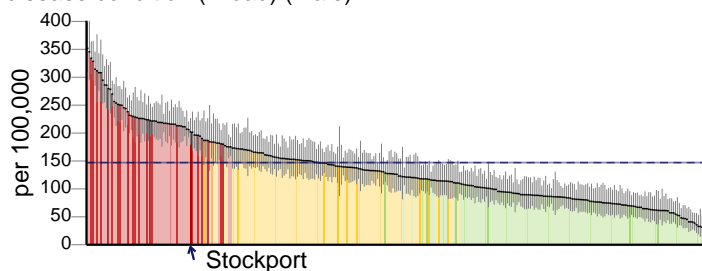


**Key** North West LAs: ■ Better ■ Similar ■ Worse ■ England value and confidence interval  
Other LAs: ■ Better ■ Similar ■ Worse

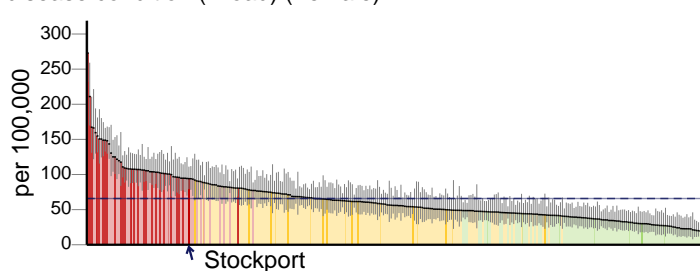
## Stockport

## Hospital Admissions - Cause groups continued

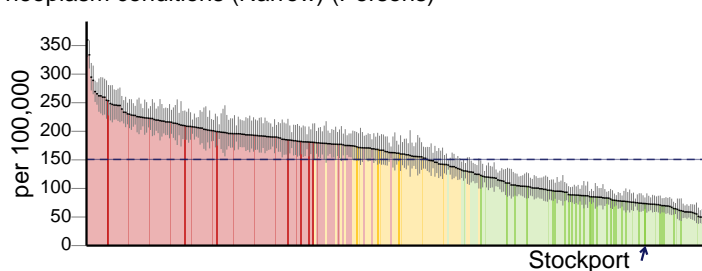
9.05 - Admission episodes for alcohol-related alcoholic liver disease condition (Broad) (Male)



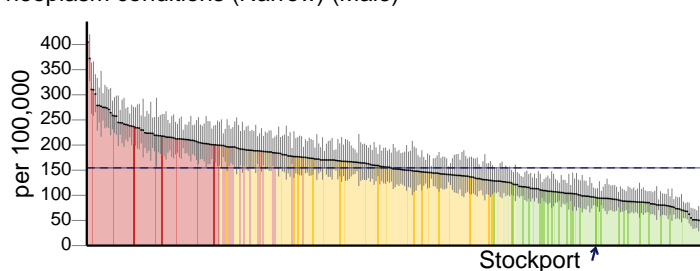
9.05 - Admission episodes for alcohol-related alcoholic liver disease condition (Broad) (Female)



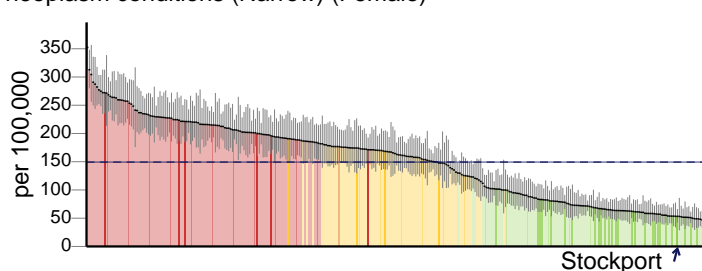
10.02 - Admission episodes for alcohol-related malignant neoplasm conditions (Narrow) (Persons)



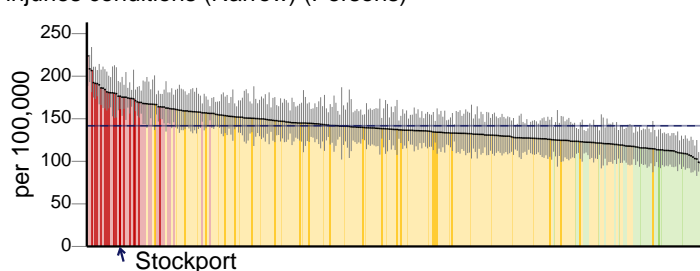
10.02 - Admission episodes for alcohol-related malignant neoplasm conditions (Narrow) (Male)



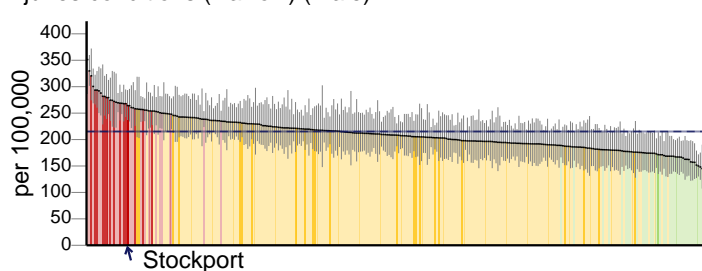
10.02 - Admission episodes for alcohol-related malignant neoplasm conditions (Narrow) (Female)



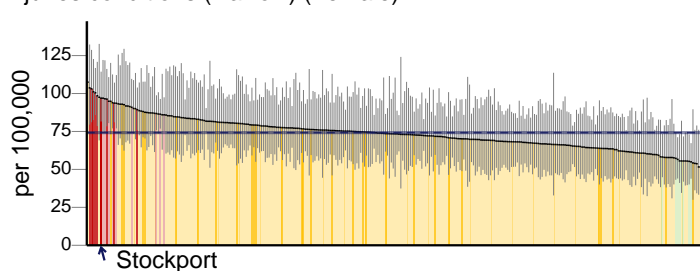
10.03 - Admission episodes for alcohol-related unintentional injuries conditions (Narrow) (Persons)



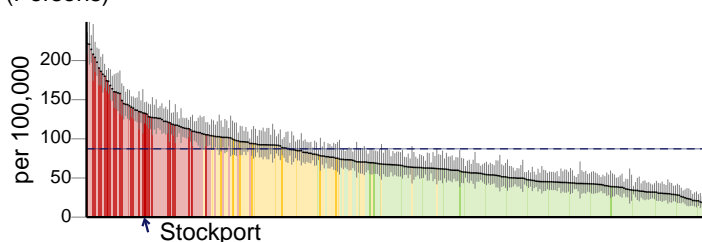
10.03 - Admission episodes for alcohol-related unintentional injuries conditions (Narrow) (Male)



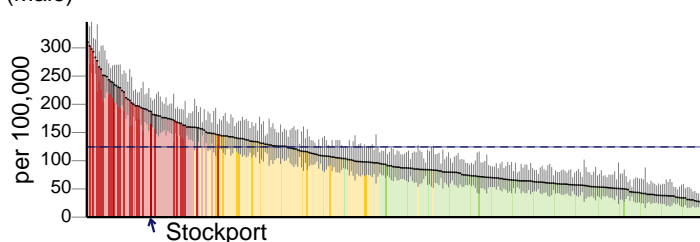
10.03 - Admission episodes for alcohol-related unintentional injuries conditions (Narrow) (Female)



10.04 - Admission episodes for alcohol-related mental and behavioural disorders due to use of alcohol condition (Narrow) (Persons)



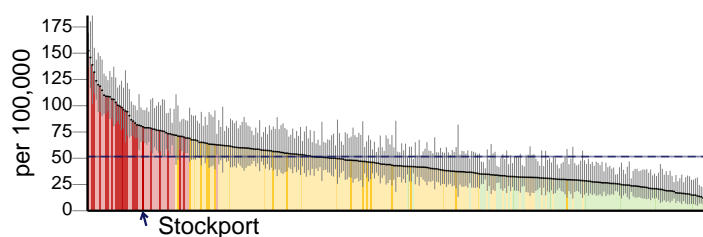
10.04 - Admission episodes for alcohol-related mental and behavioural disorders due to use of alcohol condition (Narrow) (Male)



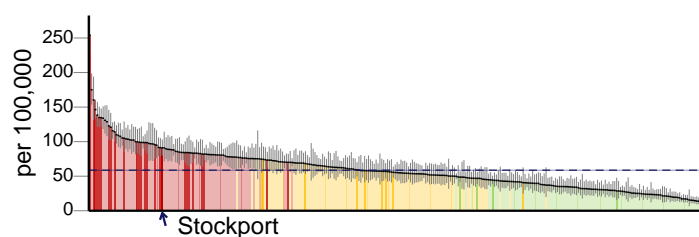
**Key** North West LAs: ■ Better ■ Similar ■ Worse ■ England value and confidence interval  
Other LAs: ■ Better ■ Similar ■ Worse

## Hospital Admissions - Cause groups continued

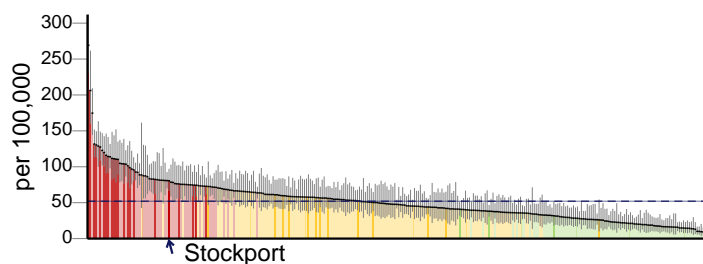
10.04 - Admission episodes for alcohol-related mental and behavioural disorders due to use of alcohol condition (Narrow) (Female)



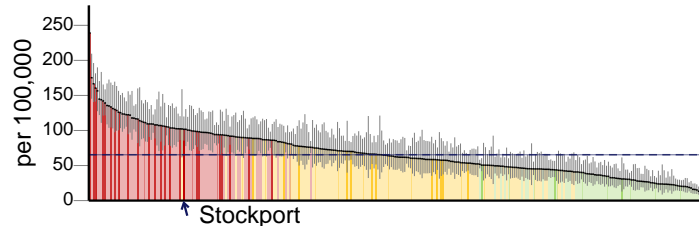
10.05 - Admission episodes for alcohol-related intentional self-poisoning by and exposure to alcohol condition (Narrow) (Persons)



10.05 - Admission episodes for alcohol-related intentional self-poisoning by and exposure to alcohol condition (Narrow) (Male)



10.05 - Admission episodes for alcohol-related intentional self-poisoning by and exposure to alcohol condition (Narrow) (Female)

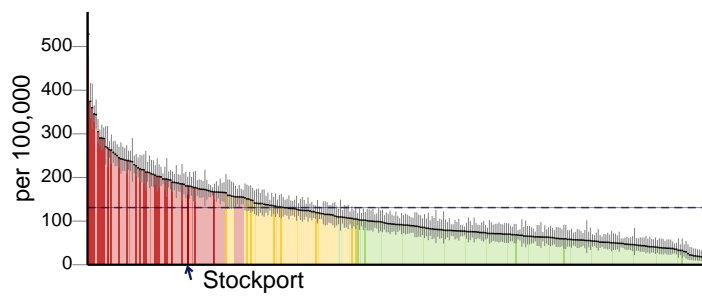


**Key** North West LAs: ■ Better ■ Similar ■ Worse ■ England value and confidence interval  
Other LAs: ■ Better ■ Similar ■ Worse

# Stockport

## Other Impacts

11.01 - Claimants of benefits due to alcoholism



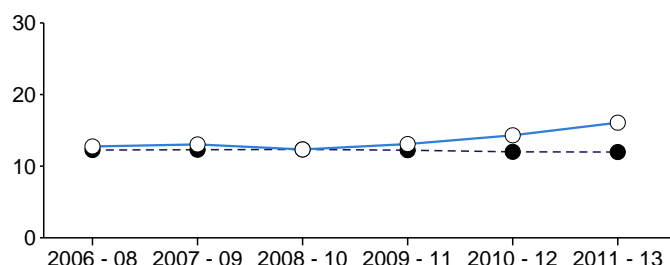
**Key** North West LAs: ■ Better ■ Similar ■ Worse ■ England value and confidence interval  
Other LAs: ■ Better ■ Similar ■ Worse



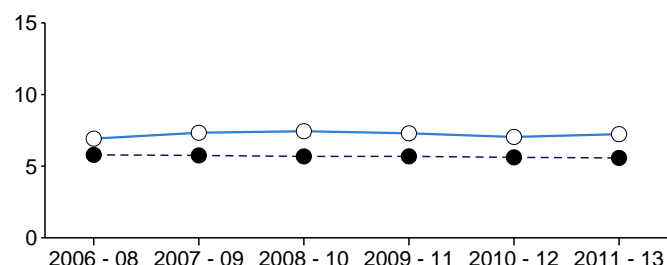
# Trends

## Mortality

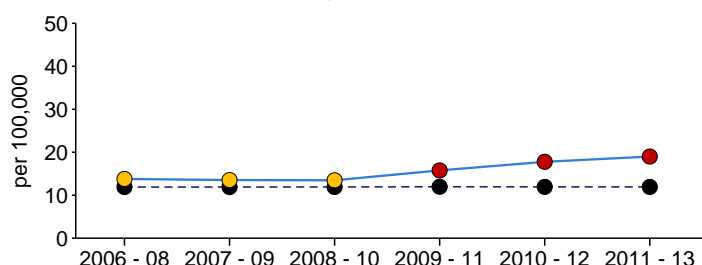
1.01 - Months of life lost due to alcohol (Male)



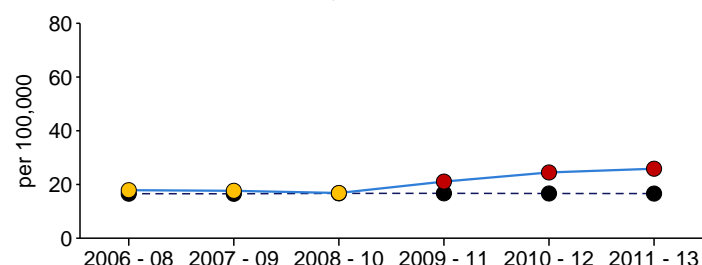
1.01 - Months of life lost due to alcohol (Female)



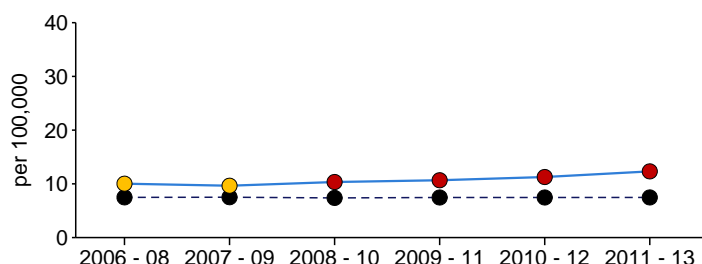
2.01 - Alcohol-specific mortality (Persons)



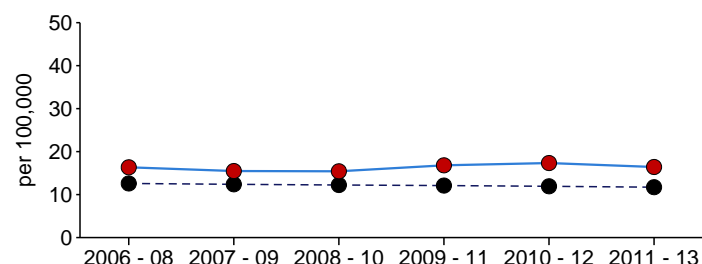
2.01 - Alcohol-specific mortality (Male)



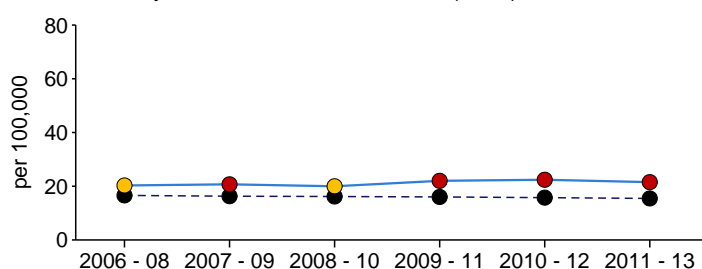
2.01 - Alcohol-specific mortality (Female)



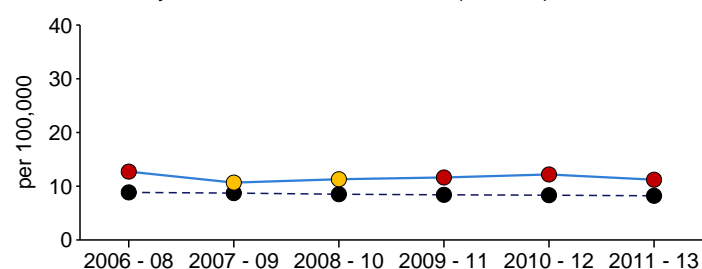
3.01 - Mortality from chronic liver disease (Persons)



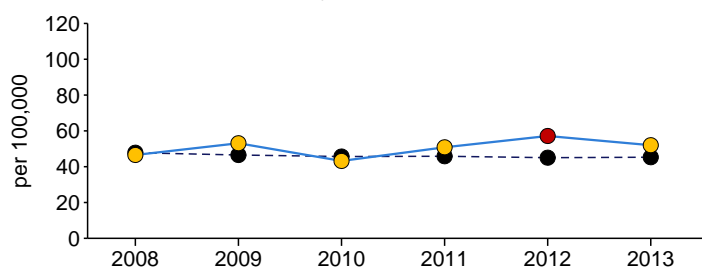
3.01 - Mortality from chronic liver disease (Male)



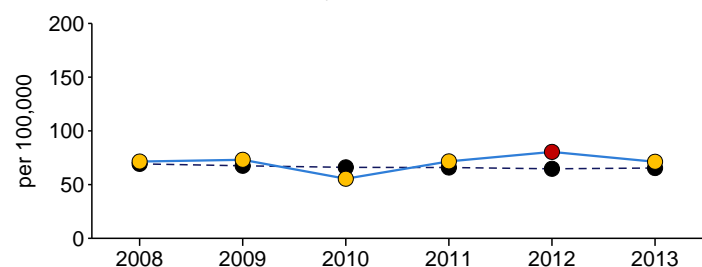
3.01 - Mortality from chronic liver disease (Female)



4.01 - Alcohol-related mortality (Persons)



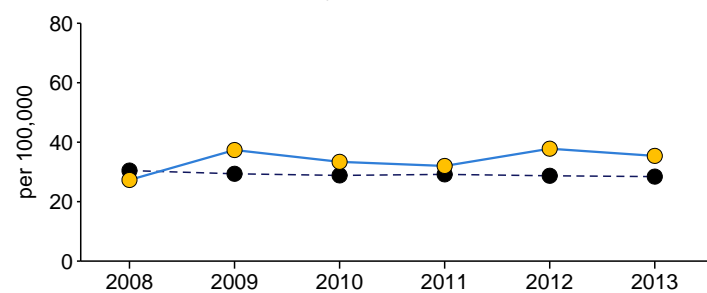
4.01 - Alcohol-related mortality (Male)



**Key** ●●● England ● Significantly worse ● Not significantly different ● Significantly better ○ Significance not tested

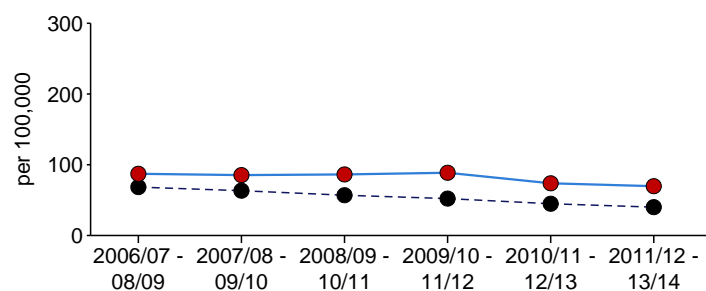
## Mortality continued

4.01 - Alcohol-related mortality (Female)

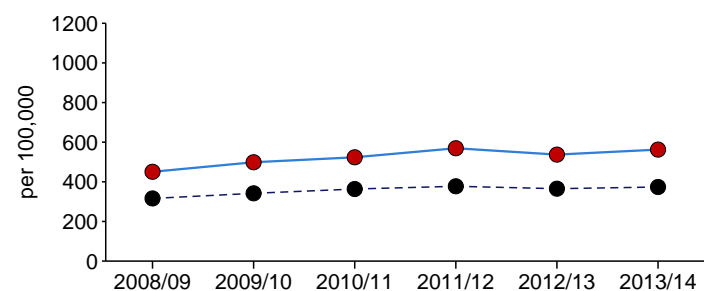


## Hospital Admissions

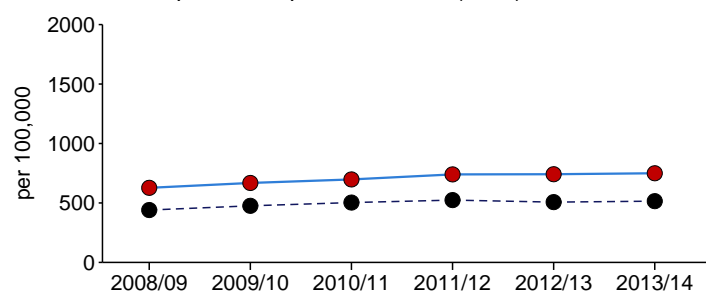
5.01 - Alcohol-specific hospital admission - under 18s



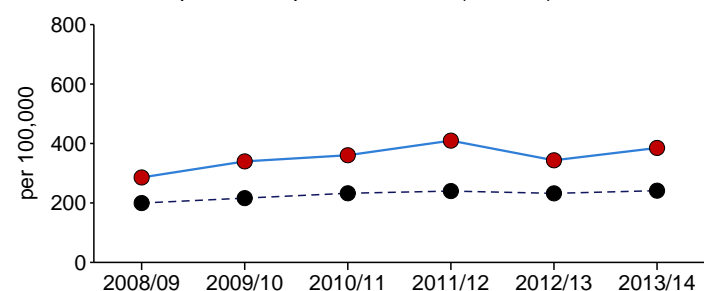
6.01 - Alcohol-specific hospital admission (Persons)



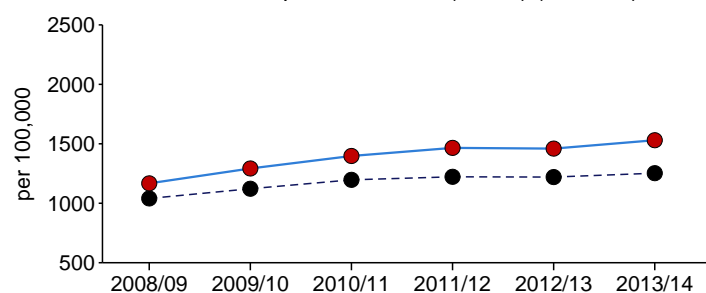
6.01 - Alcohol-specific hospital admission (Male)



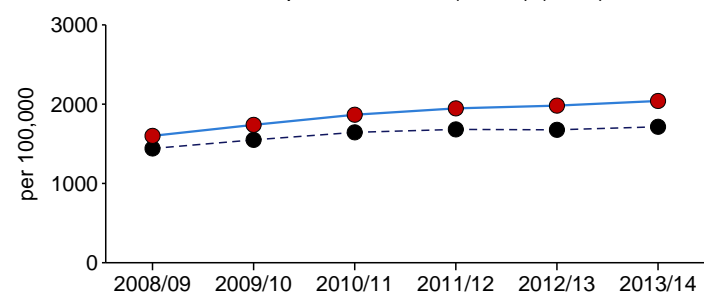
6.01 - Alcohol-specific hospital admission (Female)



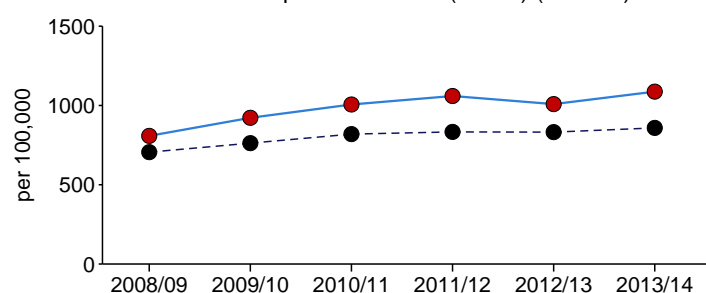
7.01 - Alcohol-related hospital admission (Broad) (Persons)



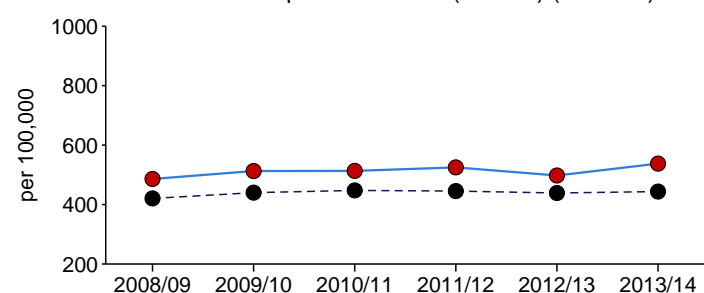
7.01 - Alcohol-related hospital admission (Broad) (Male)



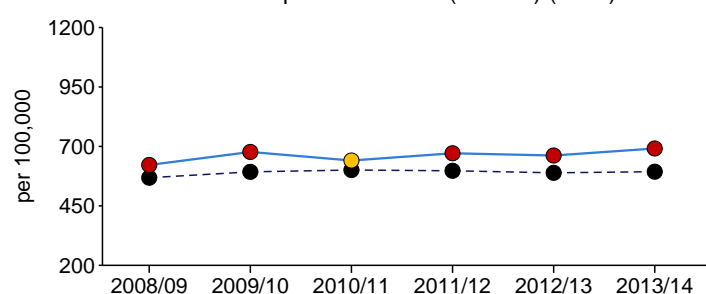
7.01 - Alcohol-related hospital admission (Broad) (Female)



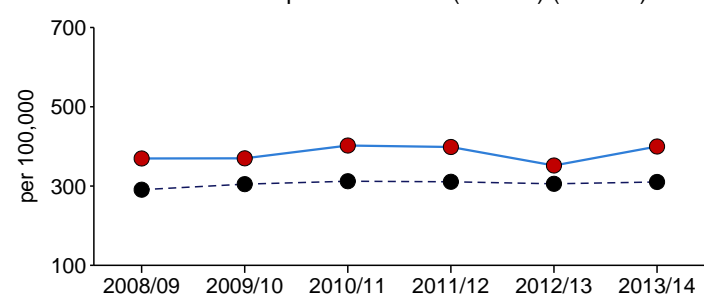
8.01 - Alcohol-related hospital admission (Narrow) (Persons)



8.01 - Alcohol-related hospital admission (Narrow) (Male)



8.01 - Alcohol-related hospital admission (Narrow) (Female)

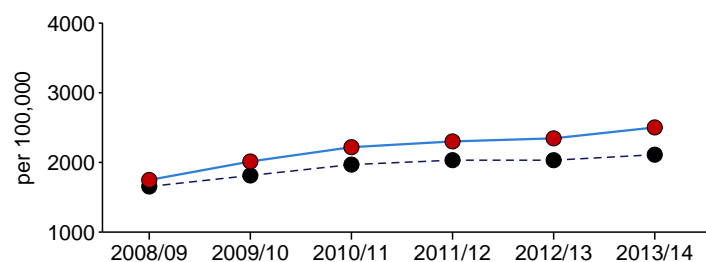


**Key** ●... England —●— Significantly worse —●— Not significantly different —●— Significantly better —○— Significance not tested

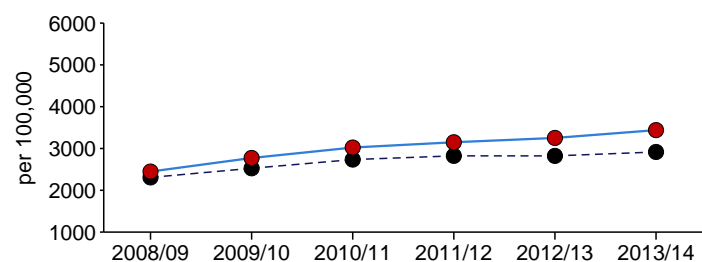
## Stockport

## Hospital Admissions continued

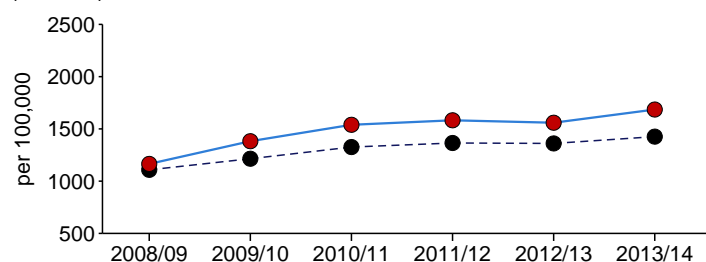
9.01 - Admission episodes for alcohol-related conditions (Broad) (Persons)



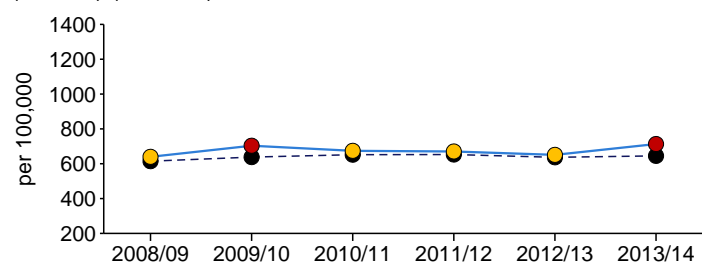
9.01 - Admission episodes for alcohol-related conditions (Broad) (Male)



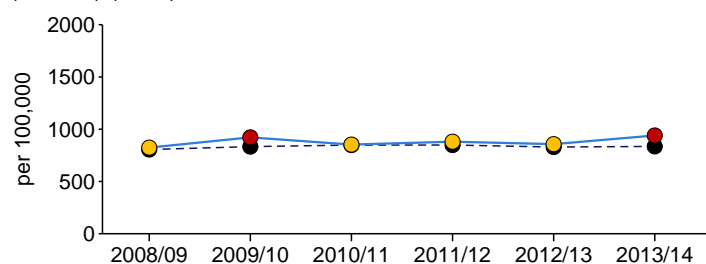
9.01 - Admission episodes for alcohol-related conditions (Broad) (Female)



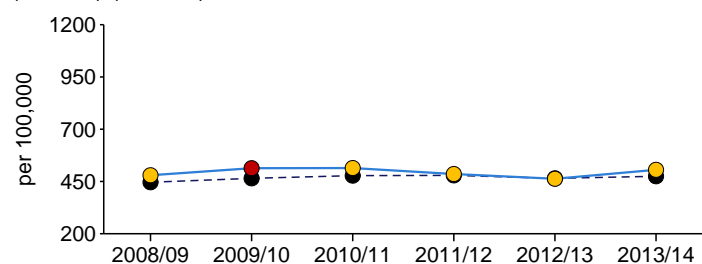
10.01 - Admission episodes for alcohol-related conditions (Narrow) (Persons)



10.01 - Admission episodes for alcohol-related conditions (Narrow) (Male)

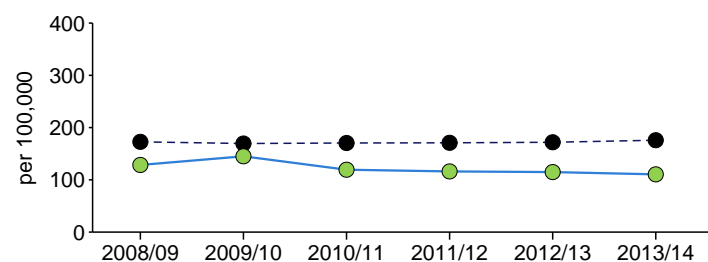


10.01 - Admission episodes for alcohol-related conditions (Narrow) (Female)

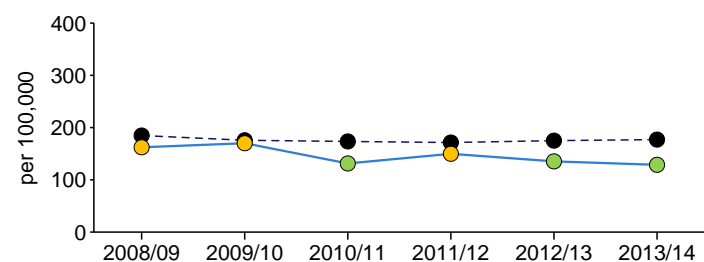


## Hospital Admissions - Cause groups

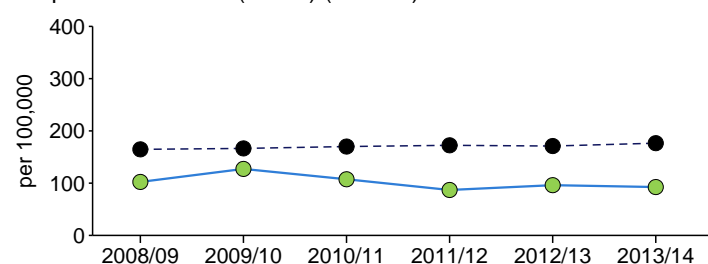
9.02 - Admission episodes for alcohol-related malignant neoplasm conditions (Broad) (Persons)



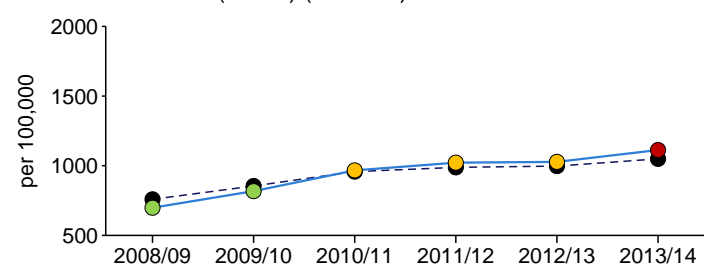
9.02 - Admission episodes for alcohol-related malignant neoplasm conditions (Broad) (Male)



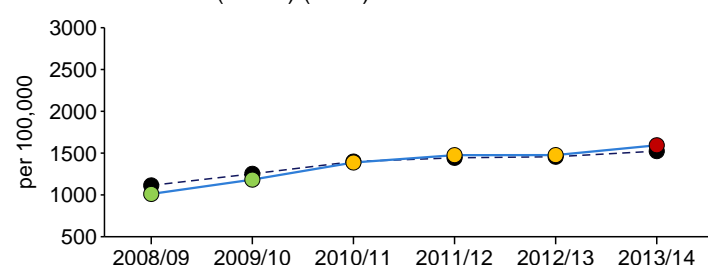
9.02 - Admission episodes for alcohol-related malignant neoplasm conditions (Broad) (Female)



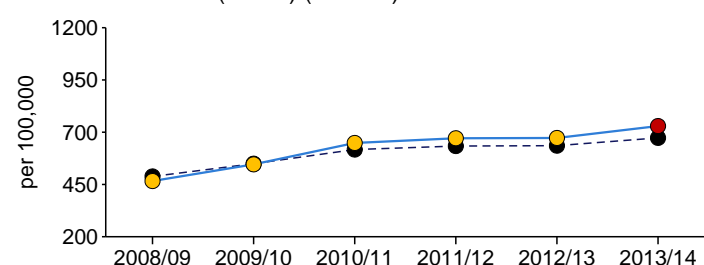
9.03 - Admission episodes for alcohol-related cardiovascular disease conditions (Broad) (Persons)



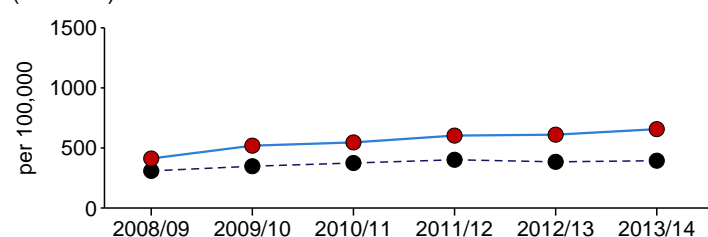
9.03 - Admission episodes for alcohol-related cardiovascular disease conditions (Broad) (Male)



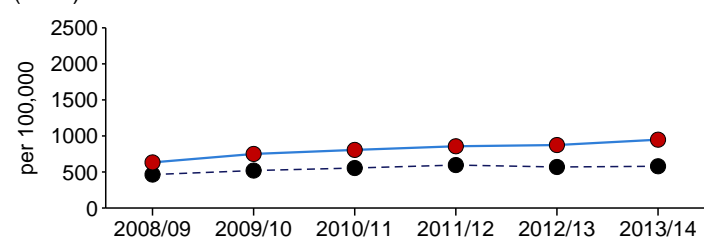
9.03 - Admission episodes for alcohol-related cardiovascular disease conditions (Broad) (Female)



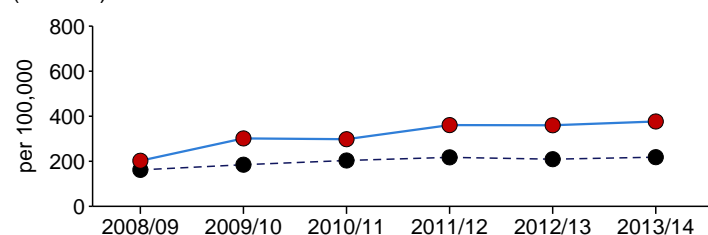
9.04 - Admission episodes for alcohol-related mental and behavioural disorders due to use of alcohol condition (Broad) (Persons)



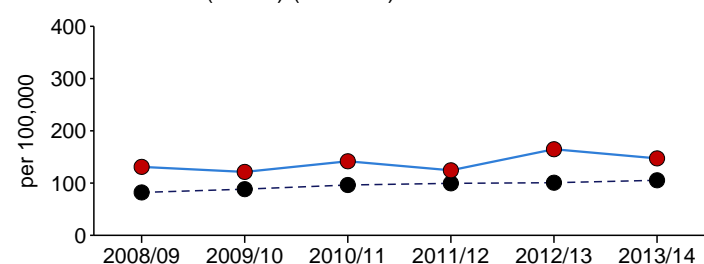
9.04 - Admission episodes for alcohol-related mental and behavioural disorders due to use of alcohol condition (Broad) (Male)



9.04 - Admission episodes for alcohol-related mental and behavioural disorders due to use of alcohol condition (Broad) (Female)



9.05 - Admission episodes for alcohol-related alcoholic liver disease condition (Broad) (Persons)

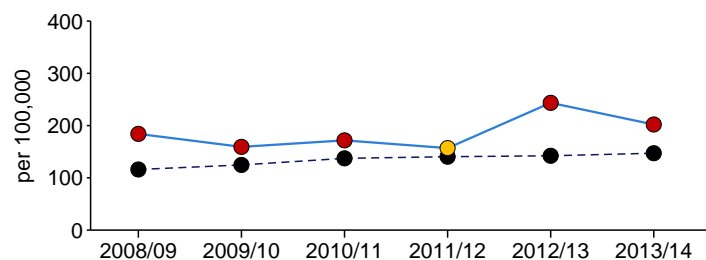


**Key** ●... England ● Significantly worse ● Not significantly different ● Significantly better ○ Significance not tested

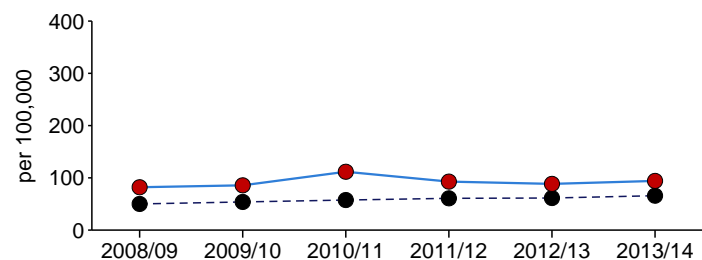
## Stockport

## Hospital Admissions - Cause groups continued

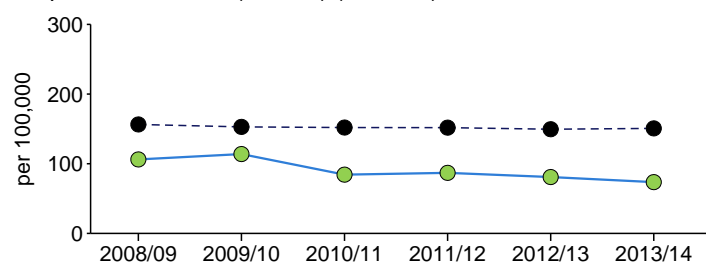
9.05 - Admission episodes for alcohol-related alcoholic liver disease condition (Broad) (Male)



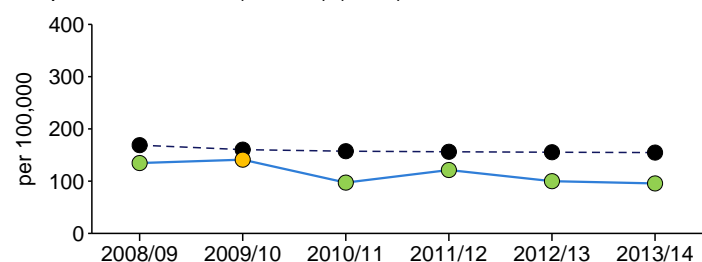
9.05 - Admission episodes for alcohol-related alcoholic liver disease condition (Broad) (Female)



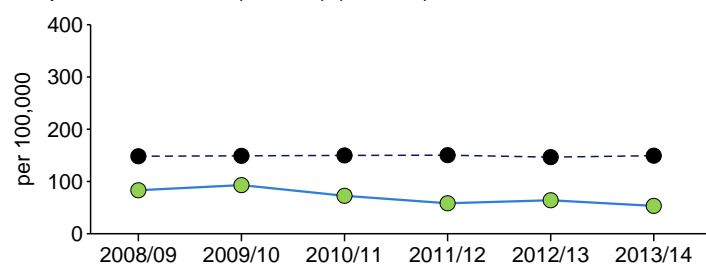
10.02 - Admission episodes for alcohol-related malignant neoplasm conditions (Narrow) (Persons)



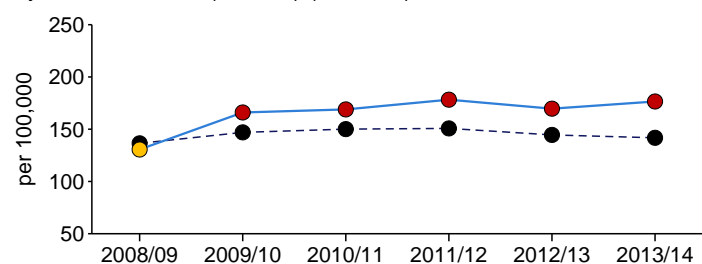
10.02 - Admission episodes for alcohol-related malignant neoplasm conditions (Narrow) (Male)



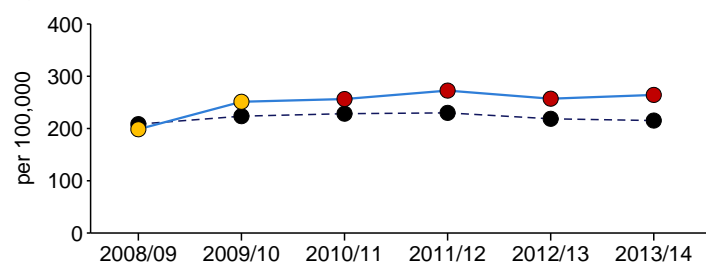
10.02 - Admission episodes for alcohol-related malignant neoplasm conditions (Narrow) (Female)



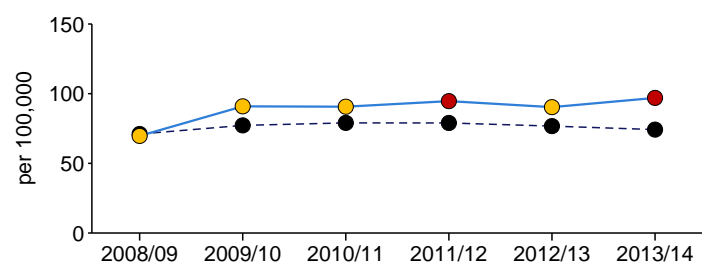
10.03 - Admission episodes for alcohol-related unintentional injuries conditions (Narrow) (Persons)



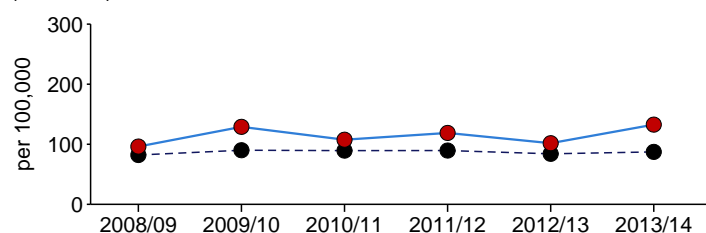
10.03 - Admission episodes for alcohol-related unintentional injuries conditions (Narrow) (Male)



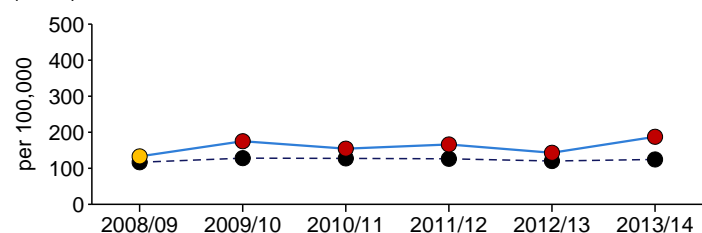
10.03 - Admission episodes for alcohol-related unintentional injuries conditions (Narrow) (Female)



10.04 - Admission episodes for alcohol-related mental and behavioural disorders due to use of alcohol condition (Narrow) (Persons)



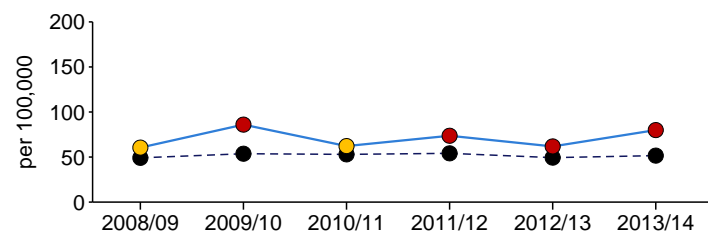
10.04 - Admission episodes for alcohol-related mental and behavioural disorders due to use of alcohol condition (Narrow) (Male)



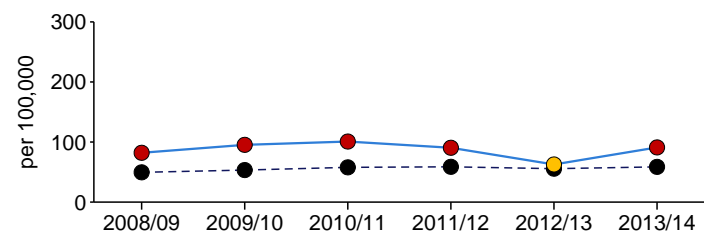
Key ●●● England ● Significantly worse ● Not significantly different ● Significantly better ○ Significance not tested

## Hospital Admissions - Cause groups continued

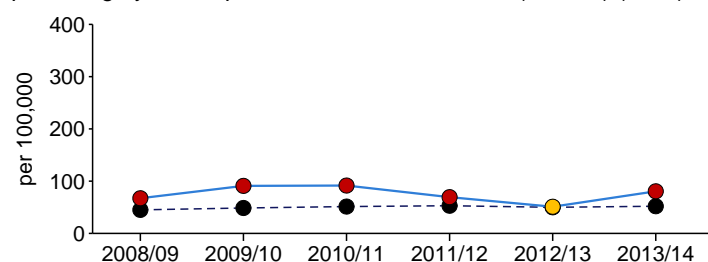
10.04 - Admission episodes for alcohol-related mental and behavioural disorders due to use of alcohol condition (Narrow) (Female)



10.05 - Admission episodes for alcohol-related intentional self-poisoning by and exposure to alcohol condition (Narrow) (Persons)



10.05 - Admission episodes for alcohol-related intentional self-poisoning by and exposure to alcohol condition (Narrow) (Male)



10.05 - Admission episodes for alcohol-related intentional self-poisoning by and exposure to alcohol condition (Narrow) (Female)

